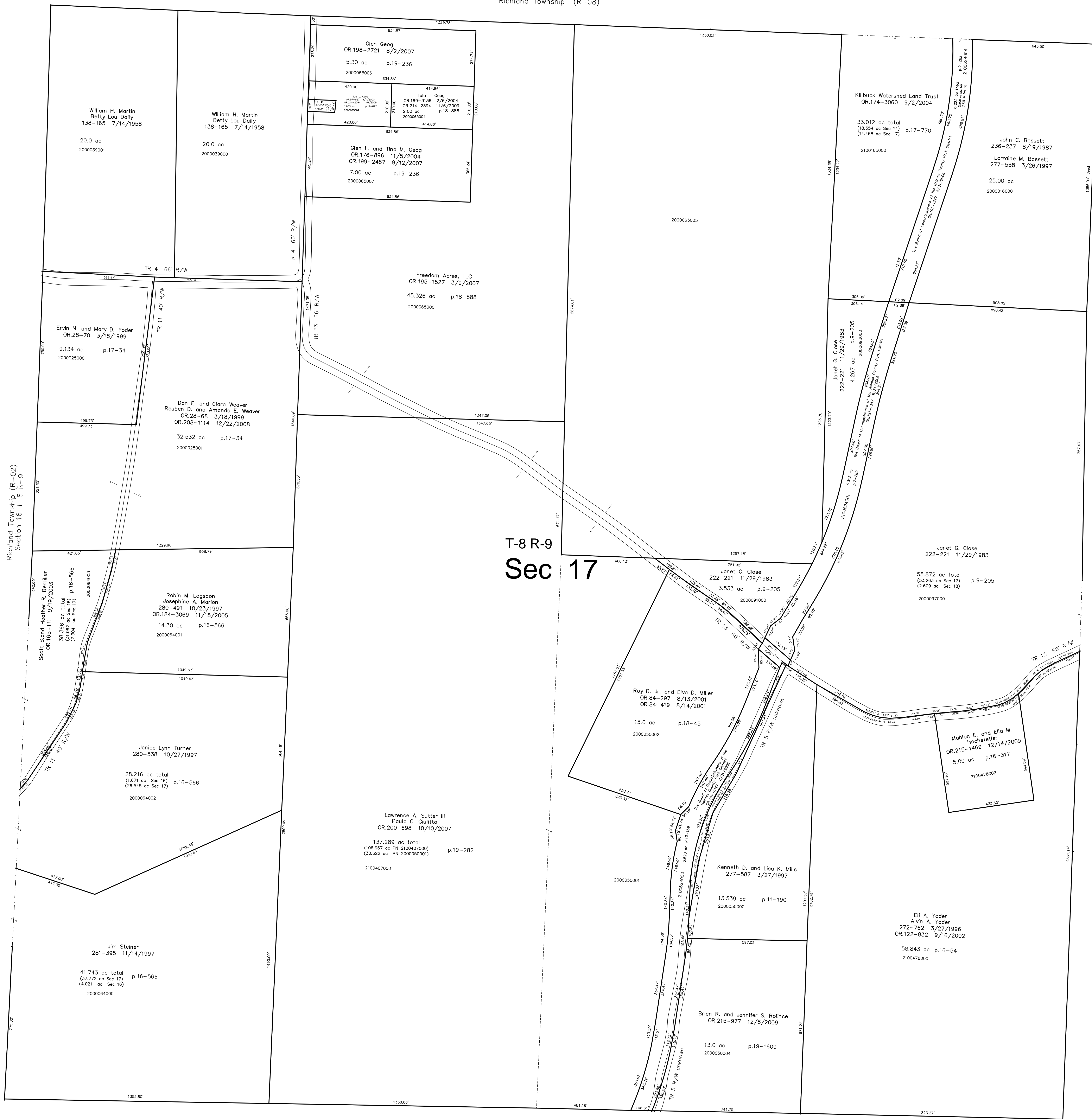


Section 14 T-8 R-9  
Richland Township (R-08)

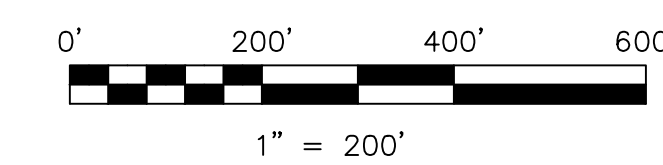


T-8 R-9  
Sec 17

Section 24 T-8 R-9  
Richland Township (R-06)

2000065003 ① Glen L. Geog  
OR.85-186 8/21/2001  
0.192 ac p.18-52

S.F.T.  
new survey required  
for next transfer



LET IT BE KNOWN, THIS MAP HAS BEEN PREPARED AS A REFERENCE GUIDE TO PROPERTY OWNERSHIP. WE BELIEVE THIS INFORMATION TO BE CORRECT AND CURRENT, HOWEVER IT IS NOT INTENDED FOR ANY LEGAL USE, WHETHER IT BE IN SALES, TRANSFERS, TRUSTS, LEASES OF ANY TYPE, ETC., AND DO NOT ACCEPT RESPONSIBILITY FOR ERRORS OF ANY NATURE OR OMISSIONS CONTAINED HEREIN.

Last Revision: 12/14/2009

**T-8, R-9, Section 17**  
**Richland Twp.**  
**Holmes County, Ohio**

**R-07**