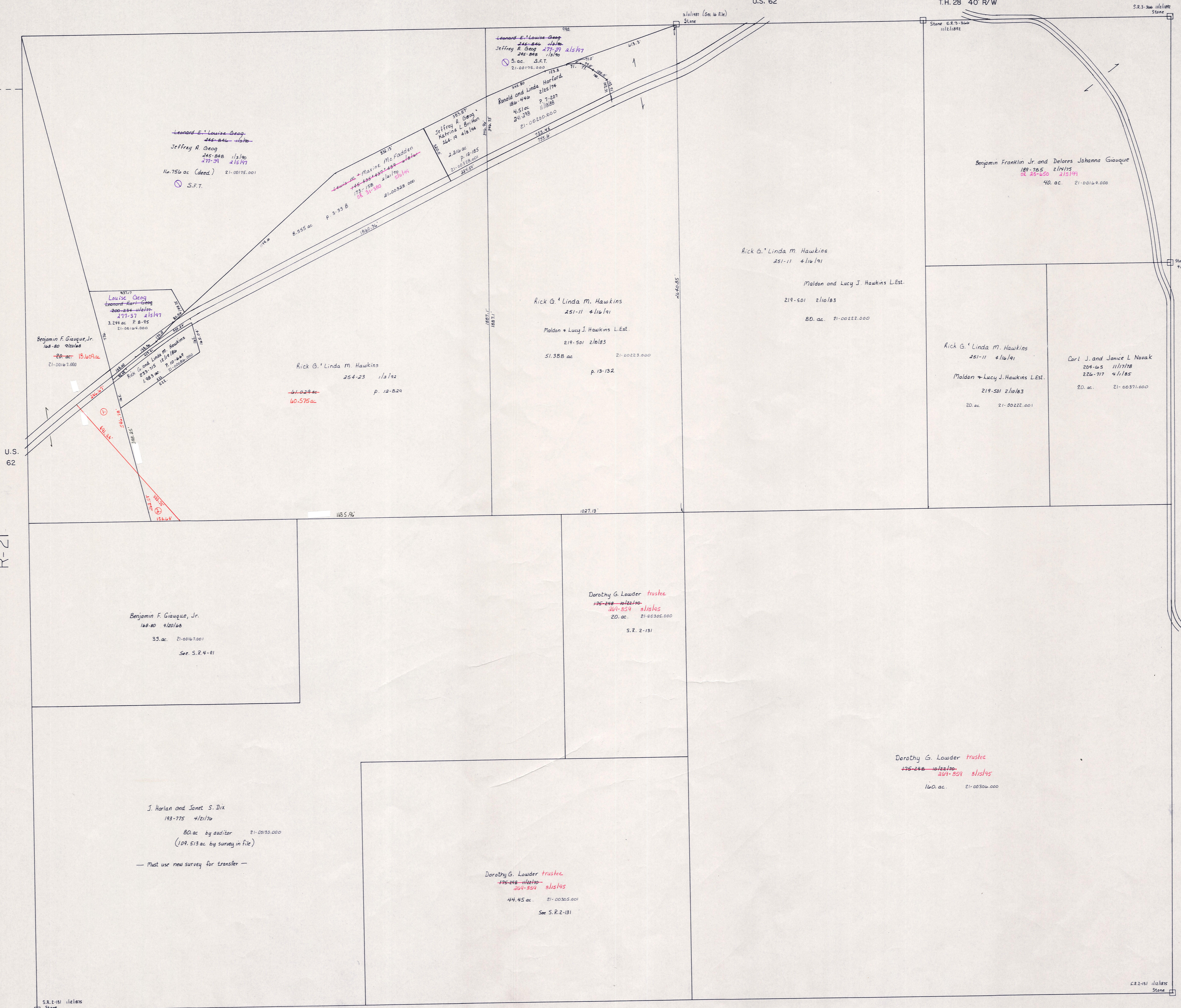


Section 16
R-27

U.S. 62

T.H. 28 40' R/W

S.R. 3-306 1/21/1872
Stone



Section 21
R-21

Section 24
R-31
T.H. 28
40' R/W

- ① Rick G. & Linda M. Hawkins. OR 92-331-12/16/98. 1.291 ac. p. 16-946
- ② Benjamin F. Gioaque, Jr. OR 22-328-12/16/88. .454 ac. p. 16-946

S.E. Corner
See Map 13-89

Coshocton County

T-8, R-8, Sec. 25
RICHLAND TWP.
SCALE 1" = 200'

LET IT BE KNOWN, THIS MAP HAS BEEN PREPARED AS A REFERENCE GUIDE TO PROPERTY OWNERSHIP. WE BELIEVE THIS INFORMATION TO BE CORRECT AND CURRENT. HOWEVER, IT IS NOT INTENDED FOR ANY LEGAL USE, WHETHER IT BE IN SALES, TRANSFERS, TRADES, LEASES OF ANY TYPE, ETC., AND DO NOT ACCEPT RESPONSIBILITY FOR ERRORS OF ANY NATURE OR OMISSIONS CONTAINED HEREIN.

R-26