

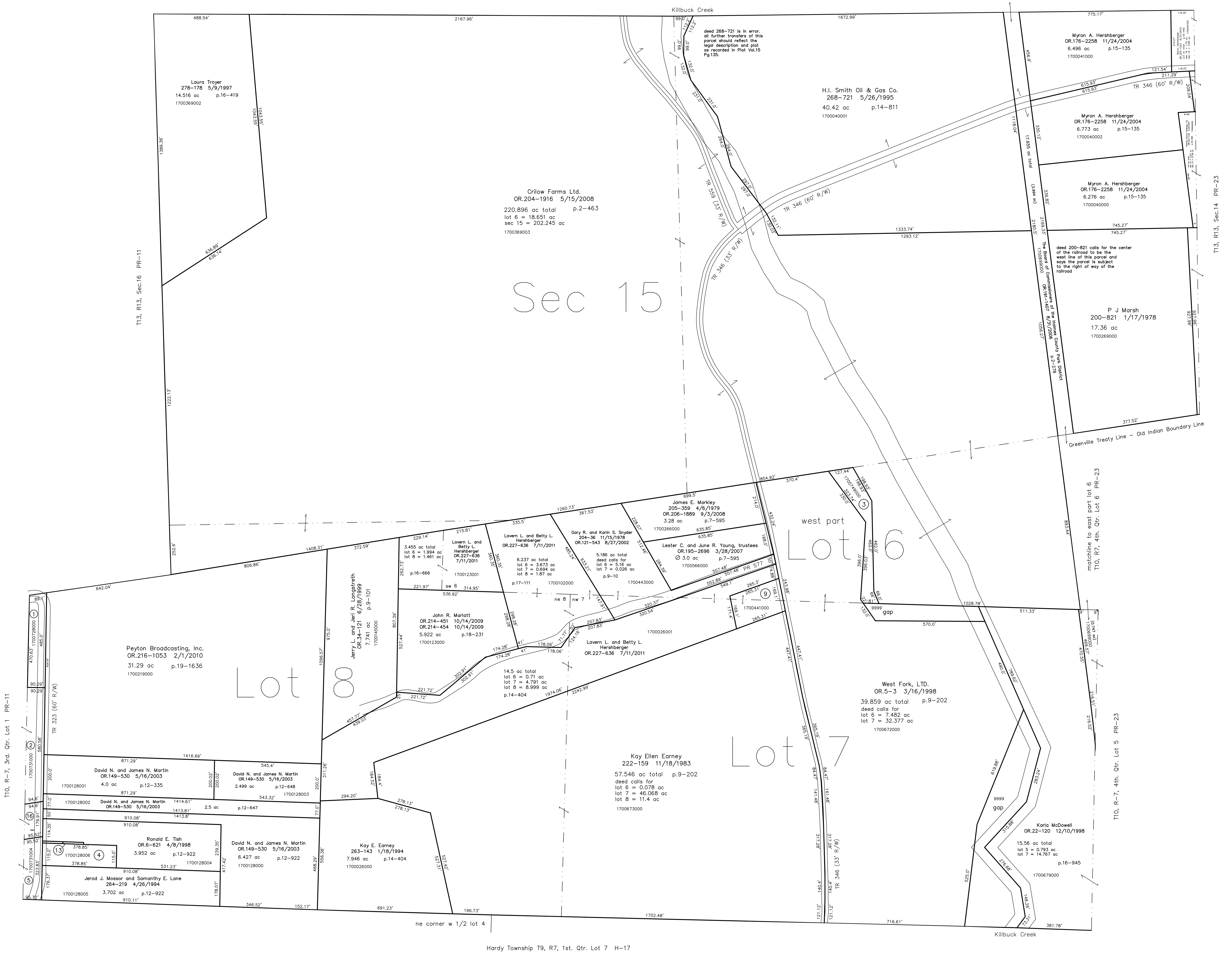
- 1700728000 (1) Lester E. and Sharon Miller
OR 204-1776 5/14/2008
0.977 ac p.10-495
- 1700731000 (2) Trico Land Co., LLC
OR 200-204 10/2/2007
1.24 ac p.18-535
- 1700749000 (3) Citlow Farms Ltd.
OR 204-1922 5/15/2008
1.155 ac p.2-463
- 1700128006 (4) Maria M. Tate
OR 127-132 10/31/2002
1.0 ac p.14-387
- 1700731004 (5) A. Gary and Deborah J. Paddock
OR 132-677 12/19/2002
0.686 ac p.16-477

- 1700441000 (6) H.I. Smith Oil & Gas, Inc.
252-391 8/8/1991
1.019 ac p.8-747

- 1700128007 (13) Maria M. Tate
OR 127-132 10/31/2002
0.648 ac p.16-347

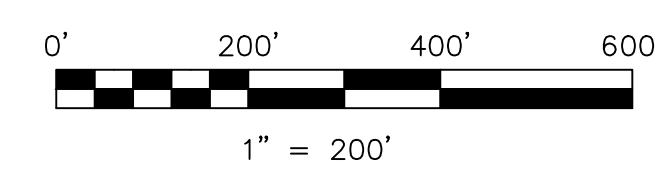
- 1700731003 (16) Willis A. and Laura I. Yoder
OR 41-47 10/25/1999
0.387 ac p.17-284

T13, R13, Sec.10 PR-19



Last Revision: 7/11/2011

**T-10, R-7, 4th. Qtr.
Lots w pt 6,7,8
T-13, R-13, Sec.15
Prairie Twp.
Holmes County, Ohio**



LET IT BE KNOWN, THIS MAP HAS BEEN PREPARED AS A REFERENCE GUIDE TO PROPERTY OWNERSHIP. WE BELIEVE THIS INFORMATION TO BE CORRECT AND CURRENT. HOWEVER IT IS NOT INTENDED FOR ANY LEGAL USE, WHETHER IT BE IN SALES, TRANSFERS, TRADES, LEASES OF ANY TYPE, ETC., AND DO NOT ACCEPT RESPONSIBILITY FOR ERRORS OF ANY NATURE OR OMISSIONS CONTAINED HEREIN.

new survey required for next transfer

PR-16

T13, R13, Sec.14 PR-23

T10, R-7, 4th. Qtr. Lot 5 PR-23

matchline to east part lot 6 T10, R7, 4th. Qtr. Lot 6 PR-23