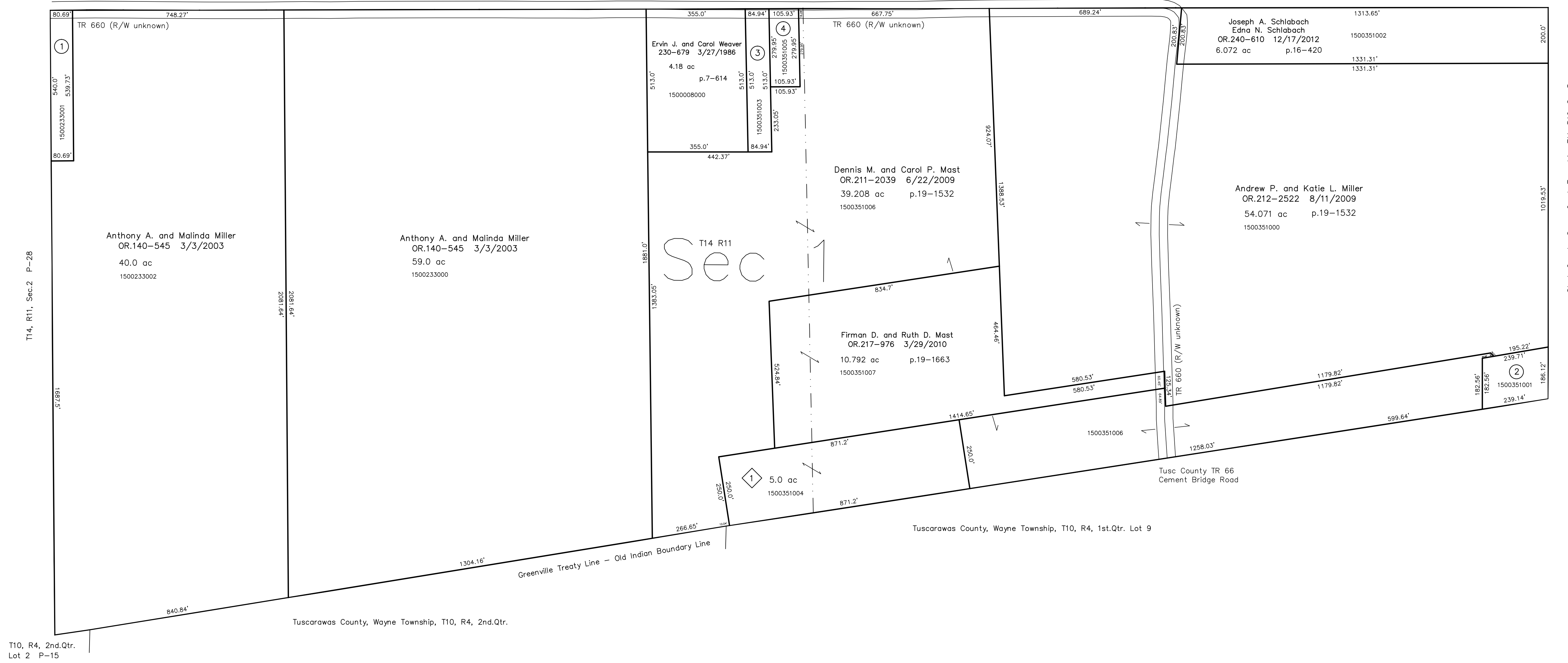


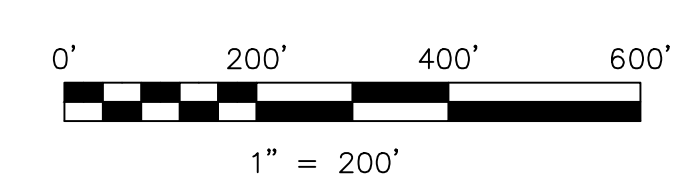
- 1500233001 ① Ray J. and Jacob J.J. Miller  
OR.49-566 3/29/2000  
1.0 ac p.14-697
- 1500351001 ② John W. and Fannie E. Miller  
287-591 2/15/1995  
1.0 ac p.14-731
- 1500351003 ③ Lester E. Weaver  
OR.191-2082 9/12/2006  
1.0 ac p.16-487
- 1500351005 ④ Lester E. Weaver  
OR.191-2078 9/12/2006  
0.681 ac p.19-800

T15, R11, Sec.36 P-32



T10, R4, 2nd.Qtr.  
Lot 2 P-15

- ◇ Vern. Subdivision  
Plat 19-301 Platted 2/3/2005
- 1500351004 ◇ Vernon L. and Rachel D. Schlabach  
OR.178-3227 3/22/2005  
5.0 ac p.19-301



LET IT BE KNOWN, THIS MAP HAS BEEN PREPARED AS A REFERENCE GUIDE TO PROPERTY OWNERSHIP. WE BELIEVE THIS INFORMATION TO BE CORRECT AND CURRENT; HOWEVER IT IS NOT INTENDED FOR ANY LEGAL USE, WHETHER IT BE IN SALES, TRANSFERS, TRADES, LEASES OF ANY TYPE, ETC., AND DO NOT ACCEPT RESPONSIBILITY FOR ERRORS OF ANY NATURE OR OMISSIONS CONTAINED HEREIN.

◇ new survey required for next transfer

Last Revision: 12/17/2012  
**T-14, R-11, Sec.1**  
**Paint Twp.**  
**Holmes County, Ohio**  
**P-31**

Stark County, Sugar Creek Township, T11, R10, Sec.5