

1500569000 ① Delores J. Troyer, trustee
OR.63-863 12/12/2000
1.026 ac p.2-112

1500989000 ④ Abe A. and Darla M. Miller
221-38 7/21/1983
OR.206-1754 8/29/2008
1.23 ac p.10-162

1500246000 ⑤ Mose A. Miller
OR.43-436 12/8/1999
OR.43-442 12/8/1999
OR.204-2979 6/3/2008
1.005 ac p.7-760

1500147000 ⑥ Timothy A. and Jean A. Hostetter
213-40 5/20/1991
OR.184-1241 10/27/2005
0.7241 ac p.8-743

1500506000 ⑫ Stanley and Roberta Sommers
148-89 5/28/1962
OR.189-503 12/30/2003
0.8 ac p.8-142

1500150000 ⑬ Elmer J. and Shirley M. Rober
241-334 11/22/1988
0.364 ac p.8-142

1500552000 ⑭ June I. Troyer
150-58 4/4/1963
209-571 5/29/1980
0.58 ac p.3-568

1500553000 ⑮ June Troyer
127-136 8/28/1952
209-571 5/29/1980
1.0 ac

1500344000 ⑯ Malcolm D. and Sandra L. Miller
197-829 5/6/1977
0.9 ac p.3-34

1500122000 ⑰ Joseph E. and Mary Ellen Beachy
OR.189-173 5/23/2006
0.906 ac

1500578000 ⑱ Timberstone, Ltd.
276-973 1/31/1997
1.0 ac

1500997000 ⑳ Amy Sue Miller, trustee
OR.201-547 11/19/2007
0.152 ac p.12-345

1500990001 ㉑ Abe A. and Darla M. Miller
245-593 12/8/1989
0.492 ac p.12-345

1500990006 ㉒ Mose A. Miller
OR.43-440 12/8/1999
OR.204-2979 6/3/2008
0.019 ac p.14-473

1500990007 ㉓ Mose A. Miller
OR.43-440 12/8/1999
OR.204-2979 6/3/2008
0.41 ac p.14-473

1500592001 ㉔ Maynard E. and Martha Troyer
OR.69-911 3/19/2001
0.89 ac p.16-804

1500592003 ㉕ Ray Alan and Laura Weaver
OR.68-316 2/23/2001
0.898 ac p.17-790

1500990008 ㉖ Marvin M. and Edna Miller
OR.69-432 3/13/2001
0.447 ac p.17-809

1500140001 ㉗ Christopher J. and Kristina K. Gertz
OR.84-315 8/13/2001
1.475 ac p.18-46

1500123001 ㉘ Malcolm D. and Sandra L. Miller
OR.153-263 6/17/2003
0.255 ac p.18-645

1500990002 ㉙ Amy Sue Miller, trustee
OR.201-547 11/19/2007
1.5 ac p.12-848

1500977001 ㉚ Dwayne R. and Madeline R. Kline
OR.184-784 10/21/2005
0.134 ac p.19-529

1500146000 ㉛ Timothy A. and Jean A. Hostetter
OR.184-1241 10/27/2005
1.197 ac p.7-379

1500687000 ㉜ Paul A. and Barbara Ann Miller
265-260 7/18/1994
1.22 ac p.7-105

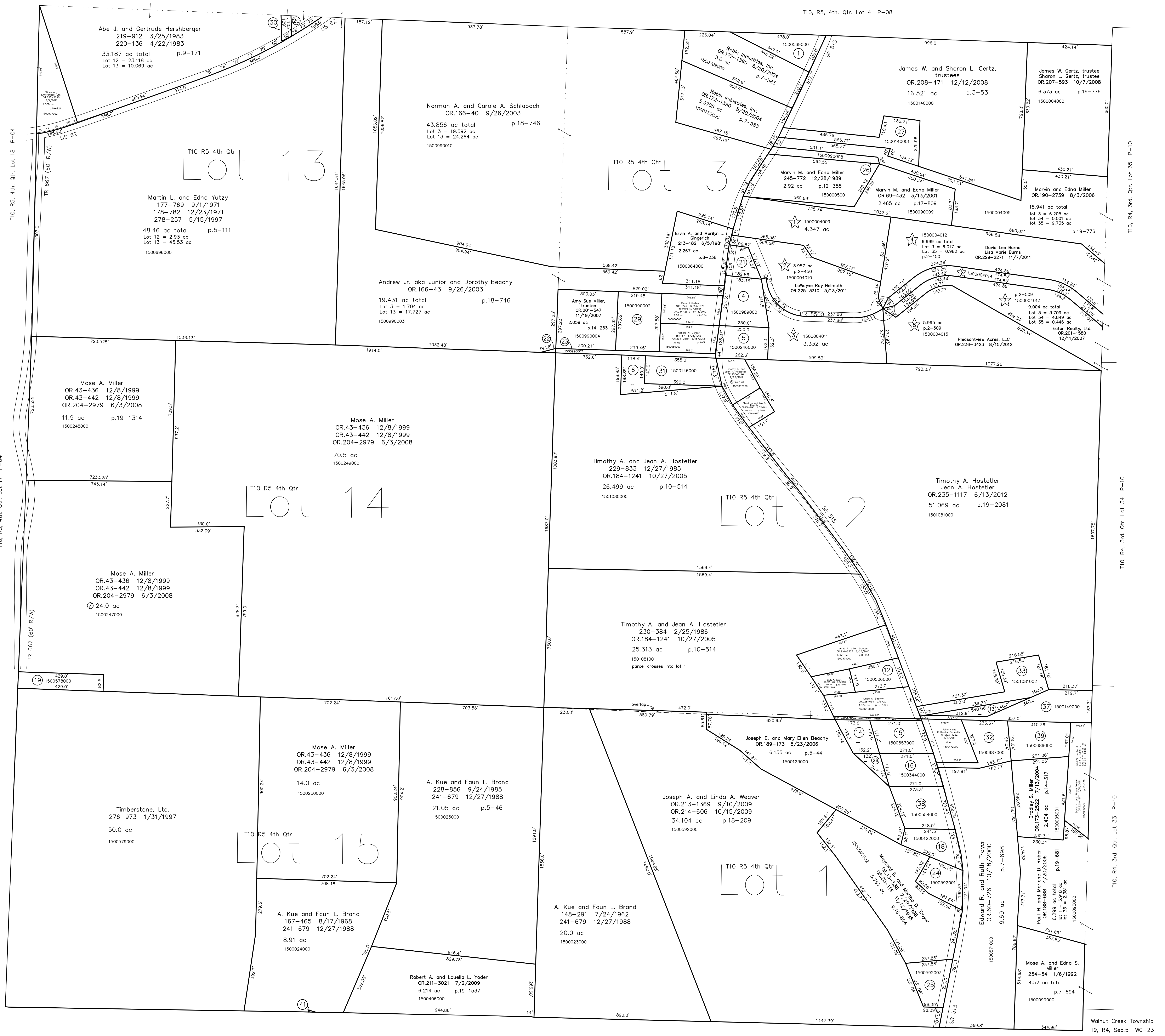
1501081002 ㉝ Jerry A. and Judith A. Rober
OR.110-2703 12/3/2006
1.5 ac p.19-775

1500149000 ㉞ Elmer J. and Shirley M. Rober
241-334 11/22/1988
1.666 ac p.7-749

1500554000 ㉟ Nathan P. and Melissa R. Jones
OR.117-186 7/9/2002
1.26 ac p.4-179

1500686000 ㊱ Paul A. and Barbara Ann Miller
265-260 7/18/1994
1.25 ac p.7-181

1501070000 ㊲ Robert A. and Louella L. Yoder
OR.110-2703 12/3/2006
0.005 ac p.19-1537



☆ Deer Trace Subdivision Replot of Lot 5
Plat 2-509 Platted 10/4/2011

☆ Deer Trace Subdivision
Plat 2-450 Platted 9/18/2007

1500040009 ☆ Robert H. and Mary E. Klinger
OR.200-2483 11/1/2007
4.347 ac p.2-450

☆ see map

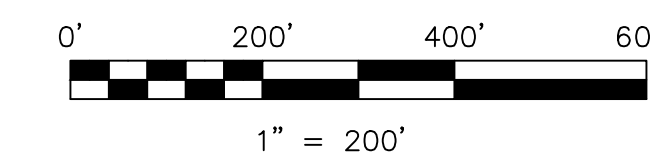
1500040011 ☆ James I. Miller
OR.205-1396 6/27/2008
3.332 ac p.2-450

☆ see map

150004014 ☆ Jonathan J. Yoder
OR.206-1327 8/25/2008
16.996 ac total p.2-450

Last Revision: 8/15/2012

**T-10, R-5, 4th. Qtr.
Lots 1,2,3,13,14,15
Paint Twp.
Holmes County, Ohio**



LET IT BE KNOWN, THIS MAP HAS BEEN PREPARED AS A REFERENCE GUIDE TO PROPERTY OWNERSHIP. WE BELIEVE THIS INFORMATION TO BE CORRECT AND CURRENT; HOWEVER IT IS NOT INTENDED FOR ANY LEGAL USE, WHETHER IT BE IN SALES, TRANSFERS, TRADES, LEASES OF ANY TYPE, ETC., AND DO NOT ACCEPT RESPONSIBILITY FOR ERRORS OF ANY NATURE OR OMISSIONS CONTAINED HEREIN.

○ new survey required
for next transfer

P-07