

Berry Patch Estates Allotment No.1

Plat 13-143 Platted 12/2/1991
VACCARIELLO LAURIN K.
OR.0008-187 4/30/1998
2.25 ac
1400292006 David N. and Andrea P. Mast
254-835 3/13/1992
OR.188-945 4/24/2006
3.278 ac p.13-143

Berry Patch Estates Allotment No.3

Plat 13-166 Platted 8/13/1992
BLACK BRYAN A.
263-981 4/6/1994
0.076 ac
STUTZMAN MATTHEW S. AND MARCIA L.
206-893 8/26/1992
1.133 ac
STEIN BRENT L. AND DARLENE
265-467 8/8/1994
3.218 ac
1400292007 KLEIN RONALD A. AND CHARLOTTE M.
OR.0172-202 5/7/2004
1.033 ac

Berry Patch Estates Allotment No.5

Plat 15-15 Platted 9/21/1993
HART JEFFREY L. AND TRESSA B.
273-203 4/28/1995
1.949 ac
1400291002 MILLER TIMOTHY S.
OR.0168-2834 12/12/2003
2.003 ac

Berry Patch Estates Allotment No.6

Plat 19-196 Platted 9/16/2004
Tiffany S. Gallion and Noah G. Hershberger
OR.198-2239 7/26/2007
1.471 ac p.19-196
1400291024 Mark C. and Kathy M. Stitzlein
OR.198-2001 7/25/2007
4.923 ac p.19-196

Berry Patch Estates Allotment No.8

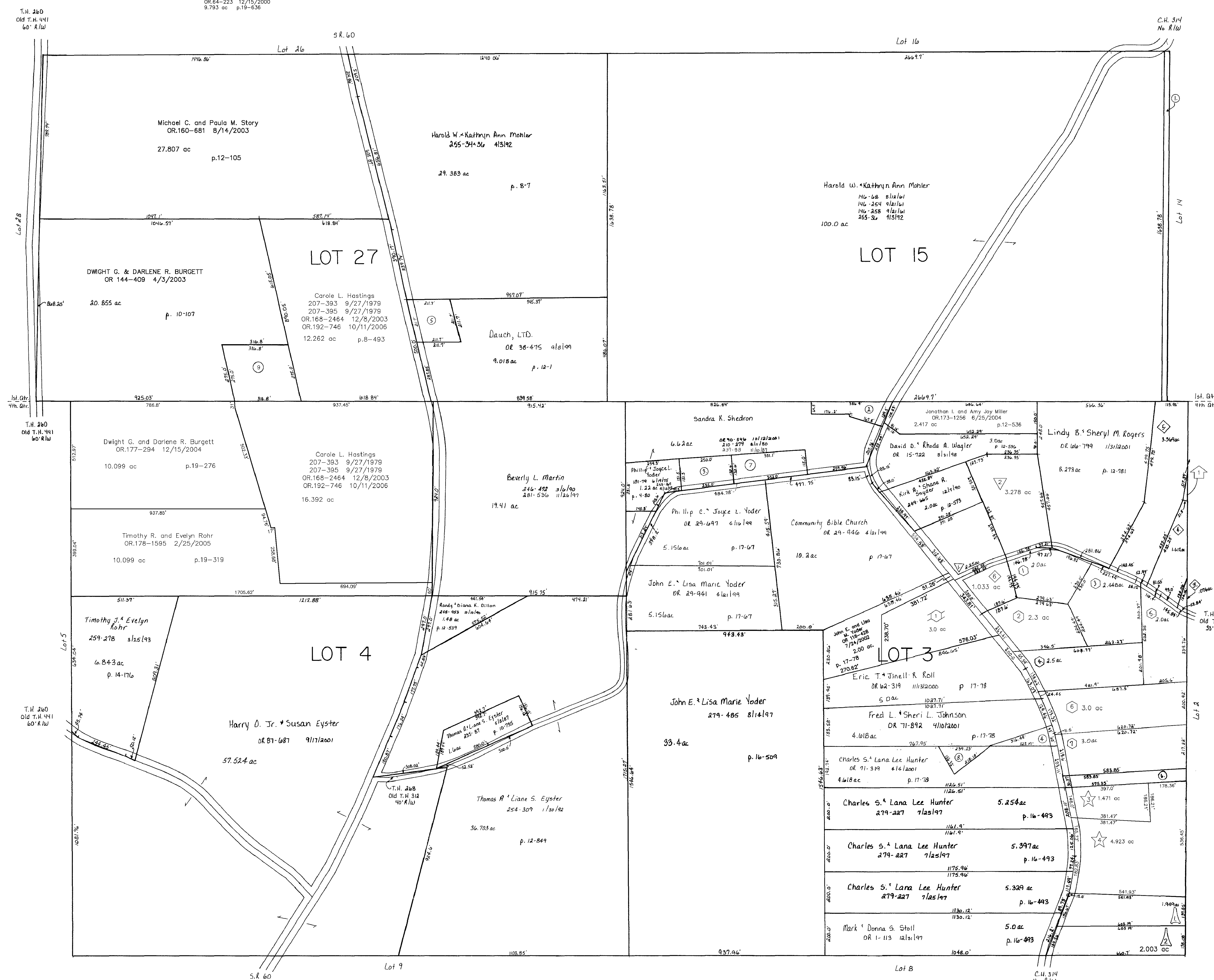
Plat 19-636 Platted 2/16/2006
Rodney A. and Rhonda M. Ling
OR.64-223 12/15/2000
9.793 ac p.19-636

Berry Patch Estates Allotment No.7

Plat 2-297 Platted 6/8/1999
HANNA GARY LEE AND JANET M.
273-203 4/28/1995
1.949 ac
1400291015 SCHLABACH MAE J.
OR.0175-1000 9/23/2004
2.3 ac
MILLER, JASON B.
MENGEL, KIMBERLY M.
OR.0033-157 6/11/1999
2.448 ac
HAYES GERALD W. AND CHRISTINA A.
OR.0033-99 6/11/1999
2.5 ac
LEVENWOOD BRUCE AND ANNETTE
OR.0052-409 5/19/2000
2.0 ac
1400291019 Stephen N. and Sheryl M. Martin
OR.195-3081 4/2/2007
3.0 ac p.2-297
KLEIN THOMAS
OR.0033-105 6/11/1999
3.0 ac

Peach Tree Knoll Subdivision

Plat 18-417 Platted 10/23/2002
ROBINSON TERRY W. AND GAIL A.
OR.0126-658 10/28/2002
3.0 ac



- 1 FETTER VVA A. TRUSTEE
OR.0003-783 2/23/1998
1.0 ac
- 2 SHEDRON SANDRA K.
157-535 2/10/1966
210-279 8/11/1980
237-88 11/10/1987
OR.0090-546 10/12/2001
0.71 ac p.4-82
- 3 YODER PHILLIP C. AND JOYCE L.
201-552 4/17/1978
255-169 4/14/1992
0.81 ac p.4-133
- 4 HUNTER CHARLES S. AND LANA LEE
OR.0078-944 6/21/2001
0.382 ac p.17-902
- 5 DAUCH LTD.
OR.0038-475 9/8/1999
1.0 ac p.12-35
- 6 LANCHMAN ROBERT AND LAURIE
265-540 8/15/1994
0.665 ac p.14-560
- 1400280007 Cheryl M. Scott
OR.78-942 6/21/2001
OR.188-2194 5/5/2006
1.0 ac p.7-5
- 8 JOHNSON FRED L. AND SHERI L.
OR.0078-942 6/21/2001
0.382 ac p.17-902

- 1400544001 Carole L. Hastings
241-218 11/15/1988
OR.168-2464 12/8/2003
OR.192-746 10/11/2006
1.0 ac p.12-96

Last Revision: 7/26/2007

T-9, R-8
1st. Qtr. lots 15, 27
4th. Qtr. lots 3, 4
MONROE TWP.
SCALE: 1" = 200'

LET IT BE KNOWN, THIS MAP HAS BEEN PREPARED AS A REFERENCE GUIDE TO PROPERTY OWNERSHIP. WE BELIEVE THIS INFORMATION TO BE CORRECT AND CURRENT, HOWEVER, IT IS NOT INTENDED FOR ANY LEGAL USE, WHETHER IT BE IN SALES, TRANSFERS, TRAILS, LEASES OF ANY TYPE, ETC., AND DO NOT ACCEPT RESPONSIBILITY FOR ERRORS OF ANY NATURE OR OMISSIONS CONTAINED HEREIN.

