

MC-15

MC-09

William V. Dugan, trustee
OR.0250-3597 10/23/2014
100.0 ac.
1300077000

T8 R6 2nd Qtr
Lot 32

Mark M. Maxwell
0184-0394 6/14/1976
OR.0258-6927 1/4/2017
OR.0258-6930 1/5/2017
103.49 ac.
1300226000

T8 R6 2nd Qtr
Lot 19

MC-20

Janet L. Briemer
OR.0252-6204 7/1/2015
94.0 ac.
1300115000

T8 R6 2nd Qtr
Lot 33

Brenda D. Hershberger, co-trustee
Merle D. Yoder, co-trustee
OR.0257-3025 8/23/2016
50.0 ac.
1300538000

T8 R6 2nd Qtr
Lot 18

Aaron J. Nisley
Naomi H. Nisley
OR.0255-0804 1/28/2016
15.001 ac. p.019-0534
1300192001

Neil D. and Amanda N.
Yoder
OR.188-2875 5/15/2006
19.125 ac. p.19-706
1300180000

Adrian H. Burkholder
Erika D. Burkholder
OR.231-1545
1/25/2012
5.616 ac. p.19-706
1300192000

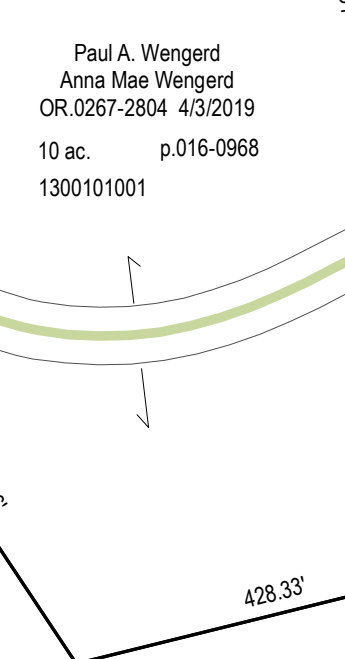
Simon H. Weaver
Farne J. Weaver
OR.0259-4236 3/3/2017
5.154 ac.
Lot 17 = 0.072 ac.
Lot 18 = 5.082 ac.
1300192005

David Helms, Jr.
Wilma M. Nisley
OR.0209-4422 3/1/2007
3.632 ac. p.019-3170
1300192004

MC-08

Ivan A. and Esther I. Erb
OR.228-880 9/8/2011
90.0 ac.
1300191000

T8 R6 3rd Qtr
Lot 27



Paul A. Wiegand
Anna Mae Wiegand
OR.0267-2804 4/3/2019
10 ac. p.018-0968
1300101001

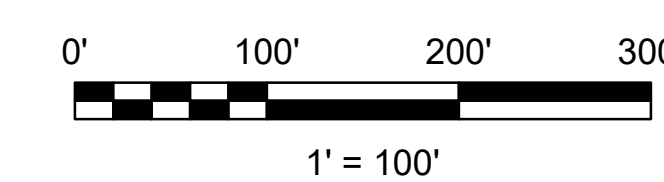
T8 R6 3rd Qtr
Lot 26

John D. and Mary
Miller
234-863 4/16/1987
10.0 ac. p.8-652
1300200000

Ivan A. and Esther I. Erb
OR.56-227 8/1/2000
90.0 ac.
1300260000

MC-19

MC-13



LET IT BE KNOWN, THIS MAP HAS BEEN PREPARED AS A REFERENCE GUIDE TO PROPERTY OWNERSHIP. WE BELIEVE THIS INFORMATION TO BE CORRECT AND CURRENT. HOWEVER, IT IS NOT INTENDED FOR ANY LEGAL USE, WHETHER IT BE SALES, TRANSFERS, TRADES, LEASES OF ANY TYPE, ETC. AND DO NOT ACCEPT RESPONSIBILITY FOR ERRORS OF ANY NATURE OR OMISSIONS CONTAINED HEREIN.

S.F.T.
new survey required
for next transfer

Last Revision: 12/31/2019

**Lots 18, 19, 32, 33 2nd
Lots 26 & 27 3rd Qtr
T-8, R-6
Mechanic Twp.
Holmes County, Ohio**

MC-14