

☆ Hickory Spring Subdivision
Plat 18-702 Platted 8/12/2003

0600381002 ☆ Darryl L. and Jennifer G. Kurtz
OR.161-97 8/18/2003
2.708 ac p.18-702

◇ Honey Run Village
Plat 17-746 Platted 12/29/2000

0601093000 ① Normen E. and Candace L. Phillips
OR.163-151 9/3/2003
4.445 ac p.17-746

0601093002 ② Wendy R. and Leah F. Swartzentruber
OR.191-1462 8/31/2006
3.091 ac p.17-746

0601093005 ⑤ Robert and Beverly Lee
OR.65-334 1/8/2001
4.86 ac p.17-746

0601093006 ⑥ James B. and Virginia L. Norton
OR.74-897 5/15/2001
4.873 ac p.17-746

0601093007 ⑦ James B. and Virginia L. Norton
OR.113-119 5/17/2002
5.097 ac p.17-746

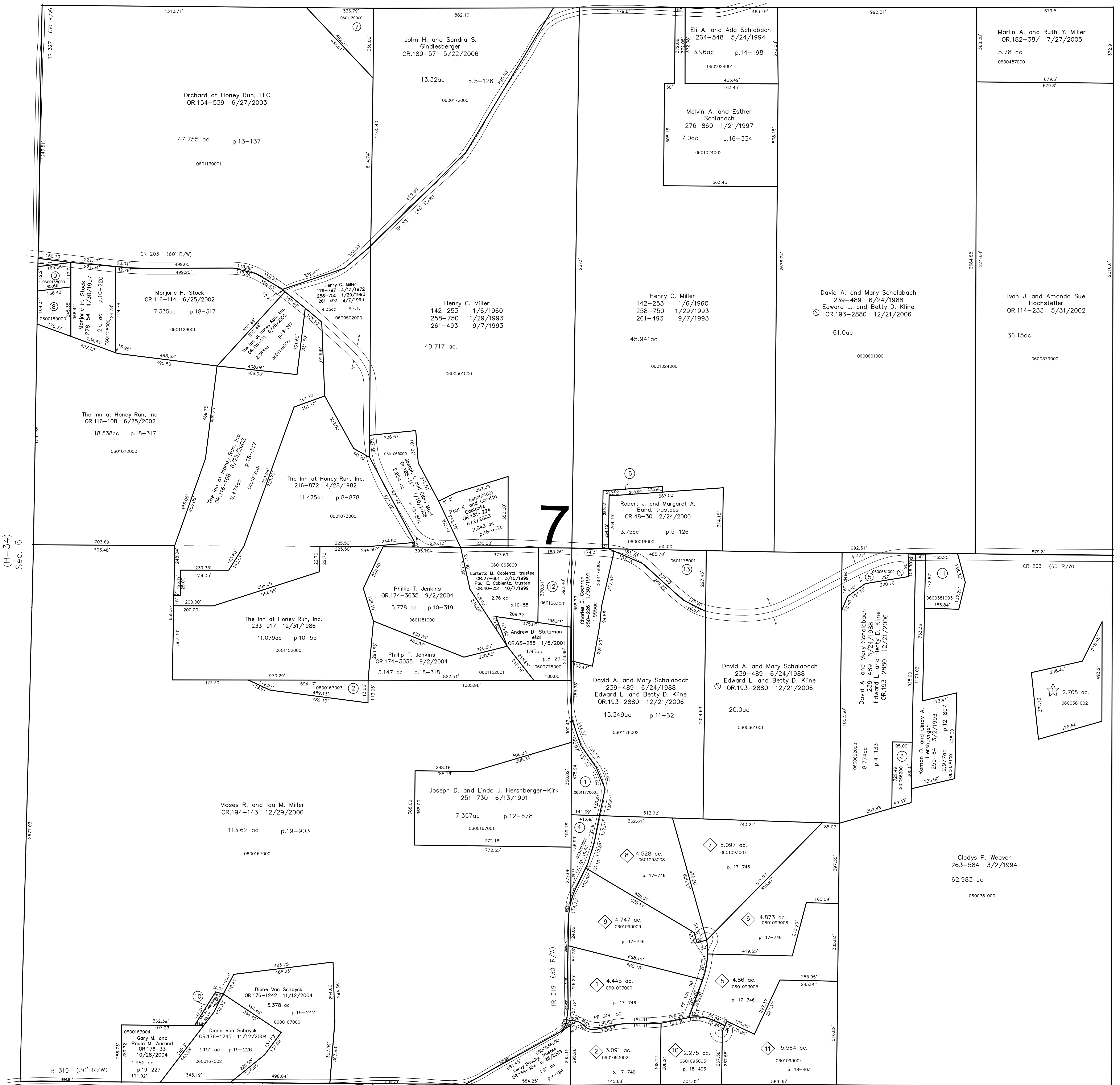
0601093008 ⑧ Joshua E. and Susan M. Crlow
OR.191-2474 9/18/2006
4.528 ac p.17-746

0601093009 ⑨ Joshua Miller
OR.191-1665 9/1/2006
4.747 ac p.17-746

◇ Replat of Lots 3 & 4
Plat 18-403 Platted 10/8/2002

0601093003 ⑩ Marjorie H. Stock
OR.113-724 3/3/1983
2.275 ac p.18-403

0601093004 ⑪ Marjorie H. Stock
OR.113-724 3/3/1983
5.564 ac p.18-403



(H-34)
Sec. 6

Berlin Twp.

0601177000 ① Joseph D. and Linda J. Hershberger-Kirk
OR.227-715 6/14/1985
1.106 ac p.10-425

0600167003 ② The Inn at Honey Run, Inc.
OR.263-857 3/24/1994
0.973 ac p.14-471

0600662001 ③ Roman D. and Cindy A. Hershberger
OR.40-24 10/5/1999
0.686 ac p.17-261

0601093001 ④ The Inn Farms, Inc.
OR.64-90 12/13/2000
0.808 ac p.17-723

0600661002 ⑤ David A. and Mary Schlabach
OR.239-489 6/24/1988
Edward L. and Betty D. Kline
OR.193-2880 12/21/2006
1.0 ac

0601023000 ⑥ Robert J. and Margaret A. Baird, trustees
OR.48-33 2/24/2000
0.349 ac p.8-859

0601130000 ⑦ John H. and Sandra S. Gindlesberger
OR.189-57 5/22/2006
1.353 ac p.13-137

0600169000 ⑧ Jeffery J. and Viola S. Allison
OR.39-741 10/1/1999
0.776 ac p.8-157

0600168000 ⑨ Jeffery J. and Viola S. Allison
OR.39-741 10/1/1999
0.46 ac

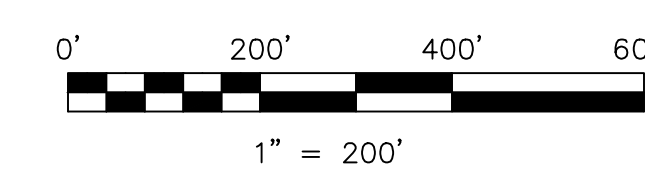
0600167005 ⑩ Diane Van Schoyck
OR.176-1242 11/12/2004
0.184 ac p.19-242

0600381003 ⑪ Eugene D. and Joani M. Weaver
OR.179-1013 4/5/2005
1.122 ac p.19-356

0601063001 ⑫ Loretta M. Coblenz, trustee
OR.27-654 3/10/1999
Paul E. Coblenz, trustee
OR.40-253 10/7/1999
1.432 ac p.17-23

0601178001 ⑬ Robert J. and Margaret A. Baird, trustees
OR.48-36 2/24/2000
1.55 ac p.10-518

S.F.T. new survey required for next transfer



LET IT BE KNOWN, THIS MAP HAS BEEN PREPARED AS A REFERENCE GUIDE TO PROPERTY OWNERSHIP. WE BELIEVE THIS INFORMATION TO BE CORRECT AND CURRENT, HOWEVER IT IS NOT INTENDED FOR ANY LEGAL USE, WHETHER IT BE IN SALES, TRANSFERS, TRAILS, LEASES, OF ANY TYPE, ETC., AND DO NOT ACCEPT RESPONSIBILITY FOR ERRORS OF ANY NATURE OR OMISSIONS CONTAINED HEREIN.

Last Revision: 12/29/2006

**T-9, R-6, Section 7
HARDY TWP.
HOLMES COUNTY, OHIO**

H-39