

- 0600545000 ① CARTER WANETA  
217-679 7/19/1982  
260-384 6/21/1993  
OR.011-904 5/3/2002  
OR.0172-2981 6/4/2004  
OR.0172-2985 6/4/2004  
0.24 ac p.4-66
- 0600546000 ② CARTER WANETA  
217-679 7/19/1982  
260-384 6/21/1993  
OR.011-904 5/3/2002  
OR.0172-2981 6/4/2004  
OR.0172-2985 6/4/2004  
0.23 ac p.8-89
- 0600733000 ③ MUMAW WARD D. AND RUTH A.  
OR.0053-988 6/19/2000  
0.23 ac p.8-89
- 0600736000 ④ MUMAW WARD D. AND RUTH A.  
OR.0053-988 6/19/2000  
0.23 ac p.8-89
- 0600737000 ⑤ MUMAW WARD D. AND RUTH A.  
OR.0053-988 6/19/2000  
0.23 ac p.8-89
- 0600740000 ⑥ MUMAW WARD D. AND RUTH A.  
OR.0053-988 6/19/2000  
0.23 ac p.8-89
- 0600214000 ⑦ GEISENHEIMER EDWARD D. AND LOREANE F.  
184-344 6/19/1973  
0.50 ac p.7-65
- 0600911000 ⑧ YODER MOSES R. AND KATY E. J.  
191-662 8/29/1975  
216-674 4/5/1982  
266-831 11/29/1994  
0.10 ac p.7-508
- 0600225000 ⑨ COKER CAROLINA A.  
OR.0085-736 8/28/2001  
0.838 ac p.18-40
- 0600155000 ⑩ Leroy A. and Marie Semko Duncan  
OR.29-35 4/5/1999  
OR.48-643 3/13/2000  
48.041 ac total  
(2.336 ac Sec 15)  
(43.705 ac Sec 16)  
p.2-293
- 0600962000 ⑪ BIG FOOT DEVELOPERS, LTD.  
OR.0173-1563 8/29/2004  
0.056 ac p.5-137
- 0600962001 ⑫ BIG FOOT DEVELOPERS, LTD.  
OR.0005-628 3/24/1998  
0.64 ac p.12-407
- 0600605003 ⑬ BYLER WILLIAM W. JR. AND LORI S.  
OR.0032-309 5/28/1999  
0.909 ac p.12-802
- 0600605002 ⑭ BYLER JOHN W. AND SHARON R.  
267-787 3/8/1995  
1.105 ac p.12-802
- 0600480001 ⑮ MILLER MYRON E. AND ANDREA L.  
OR.0017-376 9/30/1998  
0.9455 ac p.16-889
- 0600484001 ⑯ MILLER MYRON E. AND ANDREA L.  
OR.0017-376 9/30/1998  
0.9455 ac p.16-889
- 0600874000 ⑰ MILLER MYRON E. AND ANDREA L.  
274-666 8/6/1996  
0.2674 ac p.5-119
- 0600874001 ⑱ MILLER MYRON E. AND ANDREA L.  
OR.0131-443 12/10/2002  
0.5096 ac p.16-868
- 0600152000 ⑲ STEINEL RONDA P. TRUSTEE  
OR.0096-501 12/18/2001  
0.594 ac p.2-293
- 0600195001 ⑳ BYLER JOHN W. AND SHARON R.  
OR.0039-231 9/22/1999  
0.106 ac p.17-246
- 0600873003 ㉑ MILLER MYRON E. AND ANDREA L.  
OR.0055-267 7/13/2000  
0.487 ac p.2-312
- 0600873001 ㉒ MILLER MYRON E. AND ANDREA L.  
OR.0055-269 7/13/2000  
0.675 ac p.2-312
- 0601220000 ㉓ Fairland Acres, Ltd.  
OR.86-2143 2/9/2006  
0.2 ac
- 0600976000 ㉔ SKY VIEW REGULAR BAPTIST RANCH, INC.  
190-95 3/12/1975  
0.75 ac
- 0600739000 ㉕ TROYER RUBEN R.  
OR.0170-2045 3/9/2004  
0.497 ac p.8-91 SFT
- 0600734000 ㉖ TROYER RUBEN R.  
OR.0170-1453 3/4/2004  
0.433 ac p.8-91
- 0600738000 ㉗ TROYER RUBEN R.  
OR.0170-1451 3/4/2004  
0.459 ac p.8-91
- 0600768000 ㉘ STEVENS GARTH E. II  
OR.0055-884 5/16/2000  
0.134 ac p.8-776
- 0600910000 ㉙ YODER MOSES R. AND KATY E. J.  
185-206 9/27/1973  
216-674 4/5/1982  
266-831 11/29/1994  
0.71 ac p.5-24
- 0600024002 ㉚ BANBURY RALPH D.  
OR.0070-593 3/27/2001  
1.0 ac p.17-829
- 0600024001 ㉛ BANBURY RALPH D.  
OR.0070-593 3/27/2001  
1.0 ac p.17-829
- 0600024003 ㉜ BANBURY VIRGINIA S.  
OR.0070-598 3/27/2001  
1.0 ac p.17-829
- 0600877000 ㉝ MULHALL DAVID M.  
OR.0069-670 3/16/2001  
0.691 ac p.3-85
- 0600522000 ㉞ Marvin J. or Sarah J. Miller, trustees  
OR.89-672 1/15/2002  
0.996 ac p.4-194
- 0600657000 ㉟ Allen D. and Ruth A. Schie  
202-721 7/25/1978  
0.483 ac
- 0600656000 ㊱ Allen D. and Ruth A. Schie  
202-721 7/25/1978  
0.483 ac
- 0600697000 ㊲ Holmes County Board of County Commissioners  
OR.189-2952 6/22/2006  
1.0 ac p.4-184
- 0600235000 ㊳ Arlene V. Rodden  
OR.84-81 8/10/2001  
1.02 ac
- 0600234000 ㊴ Arlene V. Rodden  
OR.84-81 8/10/2001  
0.516 ac p.7-682

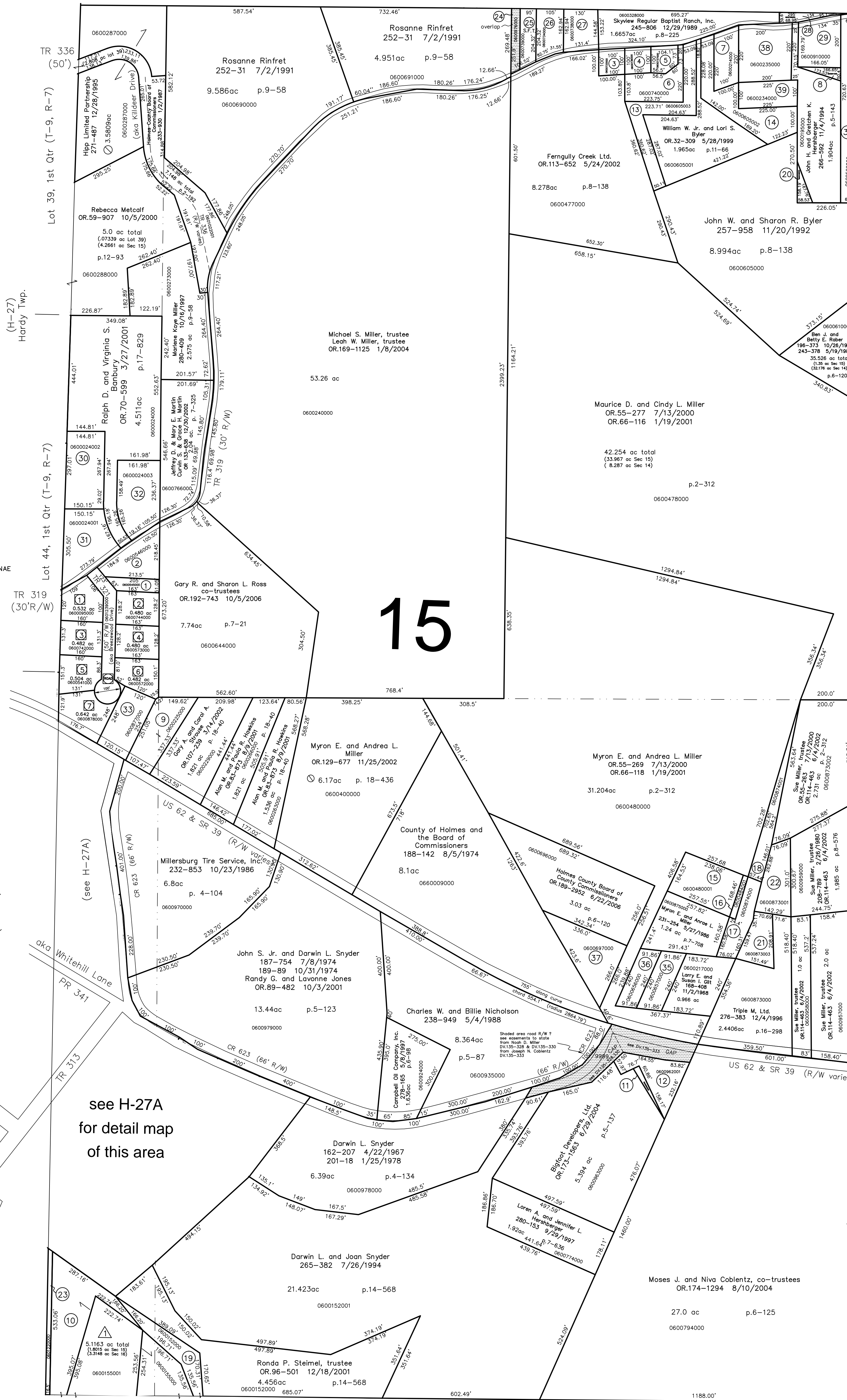
① Breezewood Acres  
Plot 4-114 Platted 9/21/1966

- 0600095000 ① HERSHBERGER ANDREW LYNN AND SHELLY LANAE  
OR.015-177 6/13/2002
- 0600744000 ② YODER BRUCE A. AND REGINA F.  
OR.0096-91 12/12/2001
- 0600742000 ③ WHITE ROBERT L.  
OR.0020-228 11/13/1998
- 0600573000 ④ TROYER PAUL A. AND BETTY A.  
239-44 5/16/1988
- 0600541000 ⑤ WALTMAN STEPHEN J. AND ARLENE F.  
253-259 10/28/1991
- 0600572000 ⑥ TROYER PAUL A. AND BETTY A.  
239-44 5/16/1988
- 0600878000 ⑦ WENGER RIAN C. AND CANDISE L.  
279-185 7/23/1997

⑧ BREEZEWOOD DRIVE (aka TR 321)  
Last known owner  
Ronan E. and Fannie E. Schlotbach  
155-205 3/26/1965  
156-203  
0.688 ac bbl by p.4-114

⑨ Duncan Allotment No.1  
Plot 15-4 Platted 8/18/1993

- 0600155001 ⑩ Leroy A. Duncan  
Marie E. Semko  
201-333 3/21/1978  
242-18 1/17/1989  
261-280 8/25/1993  
261-903 10/13/1993  
5.116 ac total  
(1.8050 ac Sec 15)  
(3.3148 ac Sec 16)



see H-27A  
for detail map  
of this area

