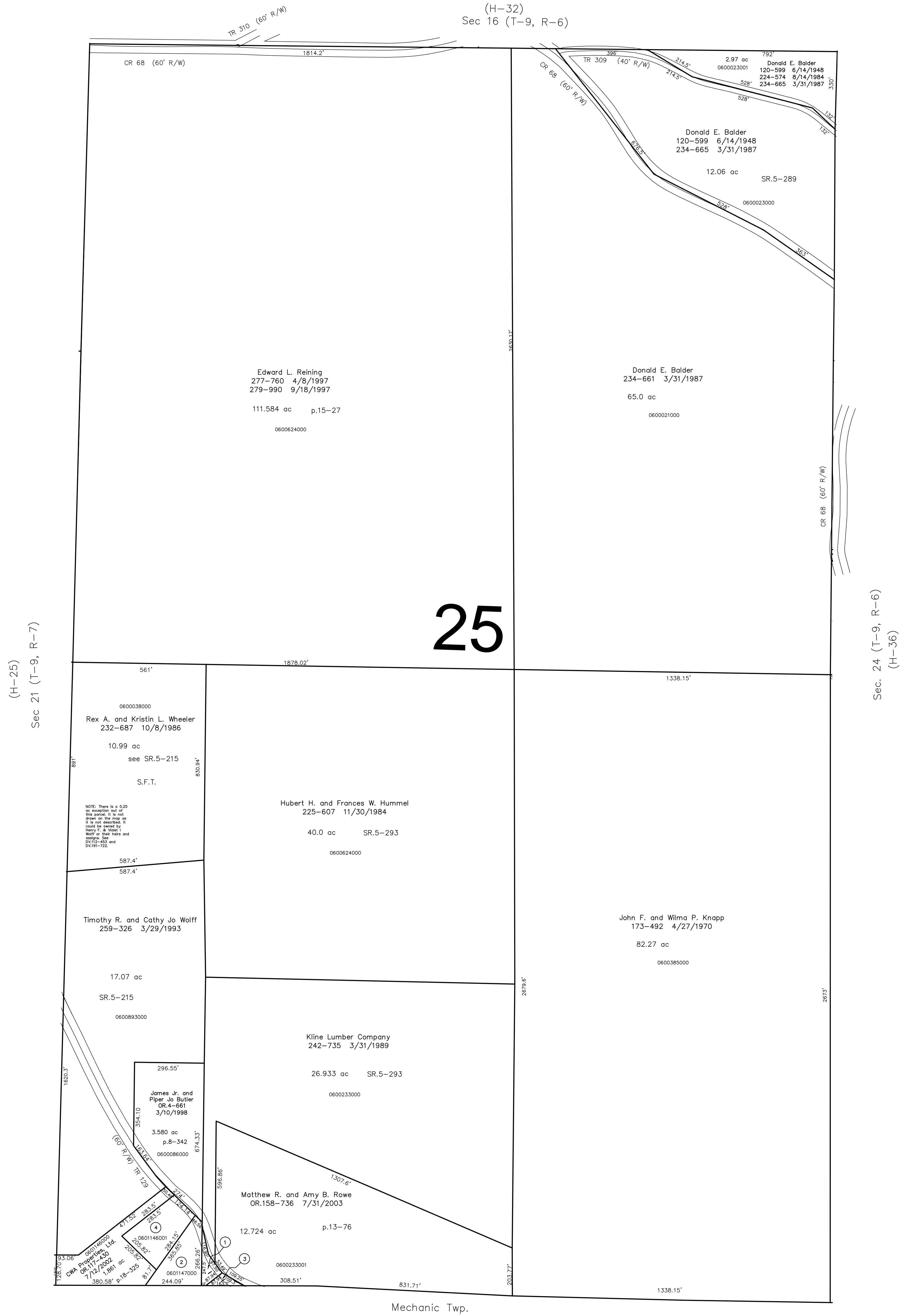


(H-32)  
Sec 16 (T-9, R-6)

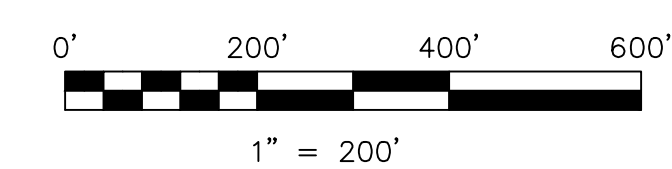


- 0601051000 ① CAROLYN A. POTTS, TRUSTEE  
MARGARET E. POTTS  
OR.0065-654 1/12/2001  
OR.0068-726 3/1/2001  
OR.0080-871 7/3/2001  
0.186 ac p.17-756
- 0601147000 ② CAROLYN A. POTTS, TRUSTEE  
MARGARET E. POTTS  
OR.0065-654 1/12/2001  
OR.0068-726 3/1/2001  
OR.0080-871 7/3/2001  
0.939 ac p.17-756
- 0601050000 ③ MOSSOR BROTHERS  
256-606 8/5/1992  
0.102 ac p.10-31
- 0601146001 ④ CORY S. ALLISON  
OR.0118-850 7/25/2002  
1.064 ac p.18-325

Mechanic Twp.

Last Revision: 11/29/2005

**T-9, R-6, Section 25  
HARDY TWP.  
HOLMES COUNTY, OHIO**



S.F.T. new survey required  
for next transfer

LET IT BE KNOWN, THIS MAP HAS BEEN PREPARED AS A REFERENCE GUIDE TO PROPERTY OWNERSHIP. WE BELIEVE THIS INFORMATION TO BE CORRECT AND CURRENT, HOWEVER, IT IS NOT INTENDED FOR ANY LEGAL USE, WHETHER IT BE IN SALES, TRANSFERS, TRADES, LEASES OF ANY TYPE, ETC., AND DO NOT ACCEPT RESPONSIBILITY FOR ERRORS OF ANY NATURE OR OMISSIONS CONTAINED HEREIN.

# H-31