

Port Washington Road Acres
Plat 2A-164 Platted 2/17/1977

- 0600996000 Green Hills, LLC
OR.185-2699 12/29/2005
5.4 ac p.7-647
- 0600997000 MICHAEL LLOYD NIPPERT, TRUSTEE
MEGAN O'NEIL NIPPERT, TRUSTEE
OR.183-1472 9/21/2005
5.4 ac p.7-646
- 0600998000 HALL MICHAEL E. AND JANE E.
229-710 9/11/1985
6.875 ac p.7-644
- 0601013000 KINGSLAND RICHARD O. AND FLORENCE A.
201-113 2/13/1978
6.875 ac p.7-645
- 0600999000 EDINGER JOSEPH R. AND SUSAN K.
OR.0080-37 7/2/2001
5.429 ac p.7-644
- 0601014000 James R. and Louise B. Laning
201-622 4/26/1978
OR.192-1187 10/16/2006
5.400 ac p.2A-164 & p.7-648
- 0601018000 EARNEY YVONNE S.
230-681 3/27/1986
5.4 ac p.7-649
- 0601019000 CONWAY JAMES R. AND HOLLY C.
228-562 8/28/1985
5.4 ac p.7-651
- 0601015000 MICHALSKI JERRY
201-378 3/31/1978
OR.0100-328 1/18/2002
5.4 ac p.7-650
- 0601012000 James R. and Becky J. Chamberlain
OR.190-184 6/29/2006
5.523 ac p.7-652
- 0601011000 HORN, RICKY L.
MAST, LOGAN M.
223-702 5/30/1984
5.15 ac p.7-656
- 0601010000 FRANK STEVEN E. AND RUTH E.
246-428 3/2/1990
5.1 ac p.7-777
- 0601002000 BASEMAN, MARK W.
RINGS, JANE
OR.0019-53 10/28/1998
5.45 ac p.7-654
- 0601003000 ANTHONY JANET L.
OR.0006-206 4/1/1998
5.4 ac p.7-652
- 0601004000 Green Hills, LLC
OR.185-2699 12/29/2005
5.654 ac p.7-658
- 0601020000 TAYLOR CYNTHIA A.
203-669 10/20/1978
229-783 12/19/1985
5.5 ac p.7-660
- 0601008000 TAYLOR CYNTHIA A.
234-574 4/25/1987
- 0601016000 SCHNEBERLY MARILYN SUE TRUSTEE
272-40 2/20/1996
5.45 ac p.7-655
- 0601017000 SCHNEBERLY MARILYN SUE TRUSTEE
272-40 2/20/1996
6.327 ac p.7-776
- 0601009000 DEHASS DONALD D. AND KIMBERLY R.
268-966 6/7/1995
5.657 ac p.7-657

Replat of Tracts 13 & 14
Plat 19-452 Platted 7/14/2005

- 0601000000 Douglas W. and Rebecca J. Shultz
OR.183-552 9/9/2005
(see card: revised Oct. 2006 to match auditor's records)
6.466 ac p.19-452
- 0601001000 Scott G. and Melissa Blitz
OR.183-553 9/9/2005
5.084 ac p.19-452

Replat Tracts 18, 19, 20
Plat 17-755 Platted 1/12/2001

- 0601005000 Dean O. and Quenjin J. Larson
OR.173-625 6/18/2004
6.019 ac p.17-755
- 0601006000 Green Hills, LLC
OR.185-2699 12/29/2005
5.298 ac p.17-755
- 0601007000 Green Hills, LLC
OR.185-2699 12/29/2005
5.123 ac p.17-755

Replat Tracts 18, 19, 20
Plat 17-755 Platted 1/12/2001

- 0601005000 Dean O. and Quenjin J. Larson
OR.173-625 6/18/2004
6.019 ac p.17-755
- 0601006000 Green Hills, LLC
OR.185-2699 12/29/2005
5.298 ac p.17-755
- 0601007000 Green Hills, LLC
OR.185-2699 12/29/2005
5.123 ac p.17-755

Replat Tracts 18, 19, 20
Plat 17-755 Platted 1/12/2001

- 0601005000 Dean O. and Quenjin J. Larson
OR.173-625 6/18/2004
6.019 ac p.17-755
- 0601006000 Green Hills, LLC
OR.185-2699 12/29/2005
5.298 ac p.17-755
- 0601007000 Green Hills, LLC
OR.185-2699 12/29/2005
5.123 ac p.17-755

Replat Tracts 18, 19, 20
Plat 17-755 Platted 1/12/2001

- 0601005000 Dean O. and Quenjin J. Larson
OR.173-625 6/18/2004
6.019 ac p.17-755
- 0601006000 Green Hills, LLC
OR.185-2699 12/29/2005
5.298 ac p.17-755
- 0601007000 Green Hills, LLC
OR.185-2699 12/29/2005
5.123 ac p.17-755

Replat Tracts 18, 19, 20
Plat 17-755 Platted 1/12/2001

- 0600355000 HUSTON SHARON A. TRUSTEE
OR.0032-801 6/7/1999
0.83 ac S.F.T.
- 0600752000 LADRACH, MARCUS AND BETH E.
STEMEL, RONDA P. AND
STEMEL, RONDA P. TRUSTEE
260-372 6/18/1993
OR.0068-753 3/1/2001
0.30 ac
- 0600714000 SKELLY JACK T. AND WILMA J. TRUSTEES
OR.0106-197 1/18/2002
0.031 ac p.7-362
- 0600754000 LADRACH, MARCUS AND BETH E.
STEMEL, RUTH M., RONDA K.,
RONDA P. TRUSTEE, AND SAMUEL M.
158-340 5/4/1966
260-376 6/18/1993
OR.0068-753 3/1/2001
OR.0109-825 1/2/2004
1.0 ac

0600077000 EICHER MARVIN J. AND REGINA F.
OR.0168-728 11/17/2003
1.227 ac p.4-138

0600433001 STEMEL, RUTH E. AND RONDA K.,
RONDA P. TRUSTEE, SAMUEL M.,
LADRACH, MARCUS & BETH E.
OR.0068-753 6/19/2000
OR.0168-813 1/2/2004
1.703 ac p.17-533

0600026000 BAKER WILLIAM T.
236-126 8/4/1987
1.11 ac p.8-645

0600952000 T. MARZETTI COMPANY
213-500 7/2/1981
0.699 ac p.9-103

0600953000 T. MARZETTI COMPANY
213-500 7/2/1981
1.042 ac p.9-103

0601059000 STEMEL, BETH ELLEN
STEMEL, RONDA P. TRUSTEE
221-821 10/13/1983
244-678 9/15/1989
OR.0068-753 3/1/2001
1.59 ac p.9-124

0600184000 WILE VICKI L.
OR.0026-480 2/19/1999
0.828 ac

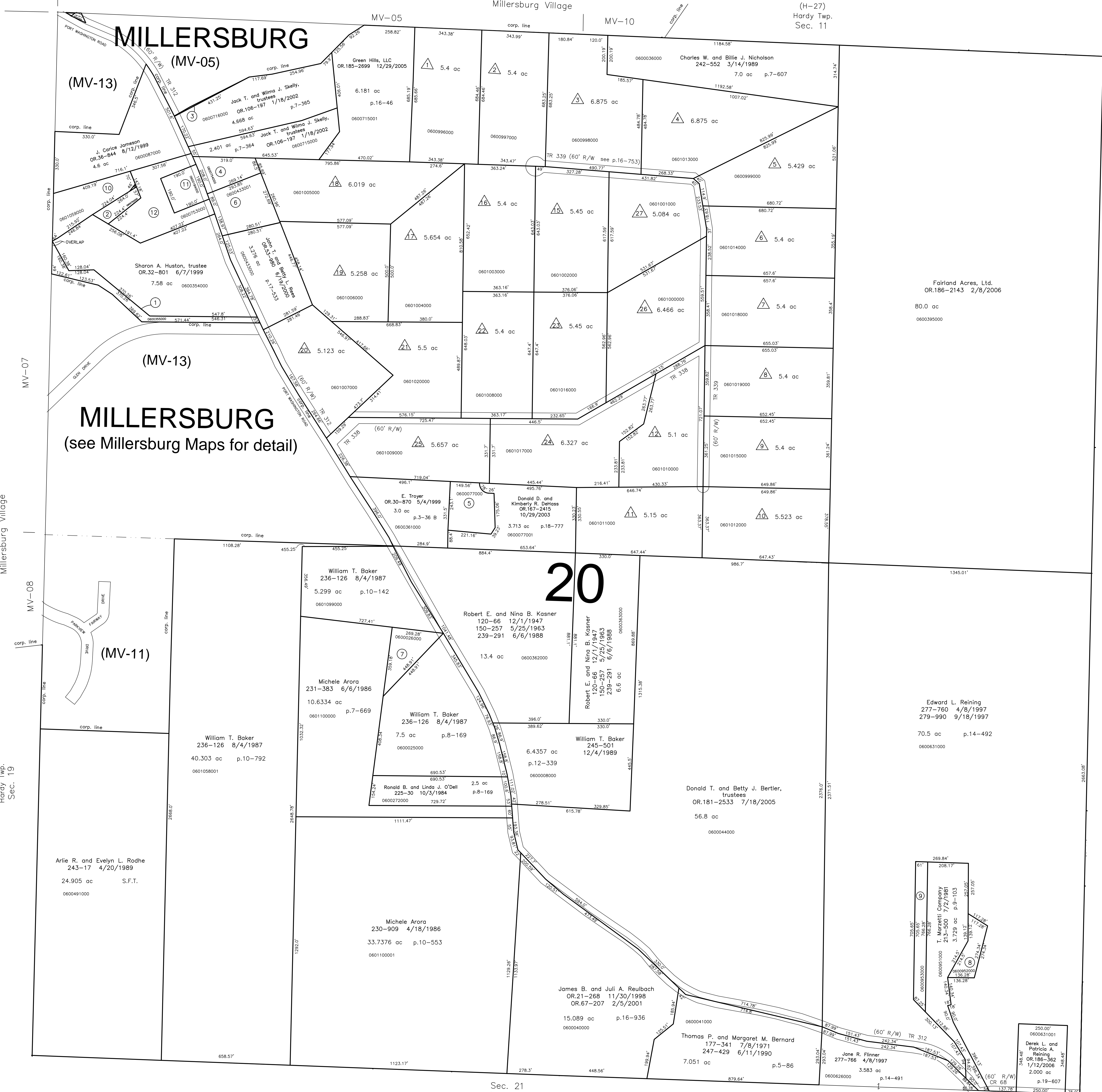
06000753000 STEMEL, RONDA K.,
LADRACH, MARCUS AND BETH E.,
STEMEL, RONDA P. TRUSTEE
260-372 6/18/1993
OR.0068-753 3/1/2001
2.052 ac

MV-04

MV-05

MV-10

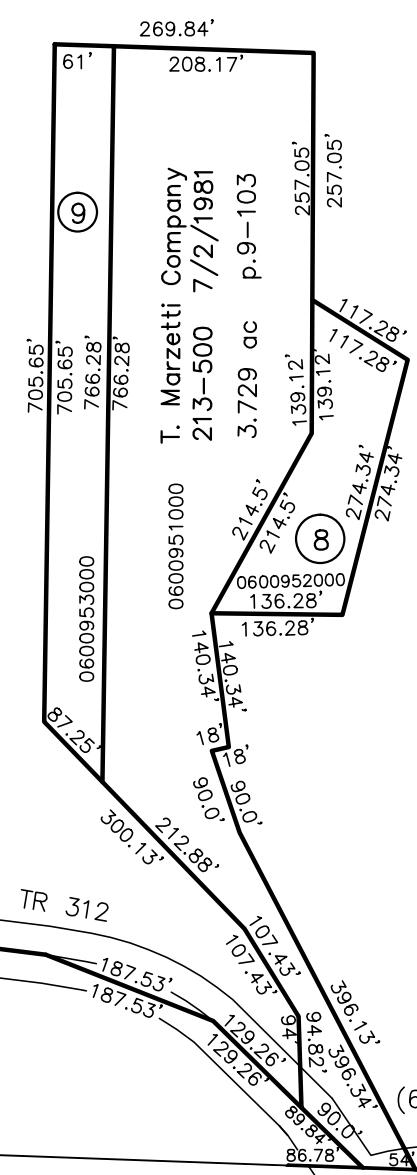
(H-27)
Hardy Twp.
Sec. 11



Millersburg Village

(H-21)
Hardy Twp.
Sec. 19

Sec. 16
Hardy Twp.
(H-32)

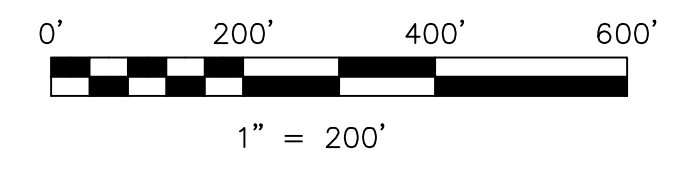


CR 68
(33' R/W)

Last revision: 10/16/2006

T-9, R-7, Section 20
HARDY TWP.
HOLMES COUNTY, OHIO

H-26



S.F.T. new survey required
for next transfer

LET IT BE KNOWN, THIS MAP HAS BEEN PREPARED AS A REFERENCE GUIDE TO PROPERTY OWNERSHIP. WE BELIEVE THIS INFORMATION TO BE CORRECT AND CURRENT, HOWEVER, IT IS NOT INTENDED FOR ANY LEGAL USE, WHETHER IT BE IN SALES, TRANSFERS, TRADES, LEASES OF ANY TYPE, ETC., AND DO NOT ACCEPT RESPONSIBILITY FOR ERRORS OF ANY NATURE OR OMISSIONS CONTAINED HEREIN.