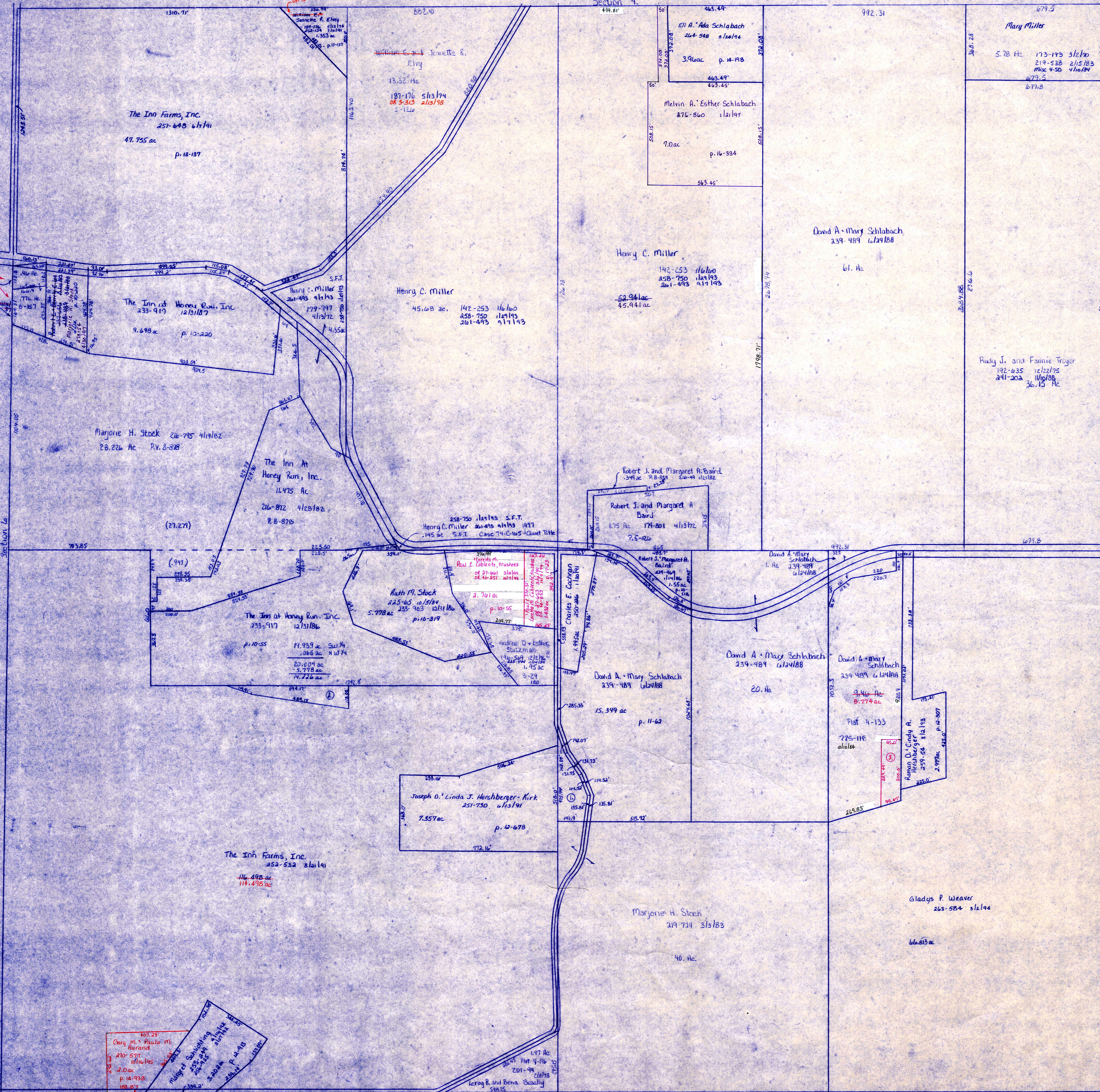


T.H. 327 30' NW
Old T.H. 188

T.H. 331 40' NW
Old T.H. 139

Section 4



C.H. 203
60' R/W

Section 8 T-9-R-6 Berlin Twp.

Section 4

- ① Josephs: Linda J. Hershberger-Kirk 227-715 6/14/85 1.106 ac p. 10-425
- ② The Inn at Honey Run, Inc. 265-557 3/26/84 473 ac p. 14-471
- ③ Roman D. & Cindy A. Hershberger 01-40-24 1/21/84 4.626 ac p. 17-261

LET IT BE KNOWN, THIS MAP HAS BEEN PREPARED AS A REFERENCE GUIDE TO PROPERTY OWNERSHIP AND CURRENT USE. HOWEVER, IT IS NOT INTENDED FOR ANY LEGAL USE, WHETHER IT BE IN SALES, TRANSFERS, TRADES, LEASES OF ANY TYPE, ETC., AND DO NOT ACCEPT RESPONSIBILITY FOR ERRORS OF ANY NATURE OR OMISSIONS CONTAINED HEREIN.

T-9, R-6, Sec. 7
HARDY TWP.
SCALE 1"=200'

H-39