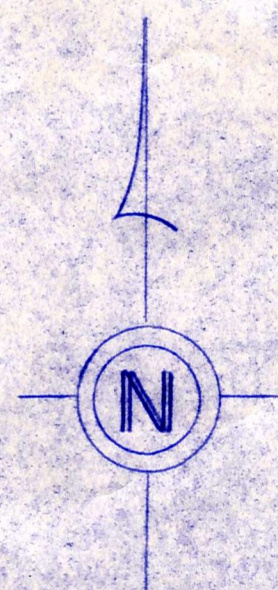
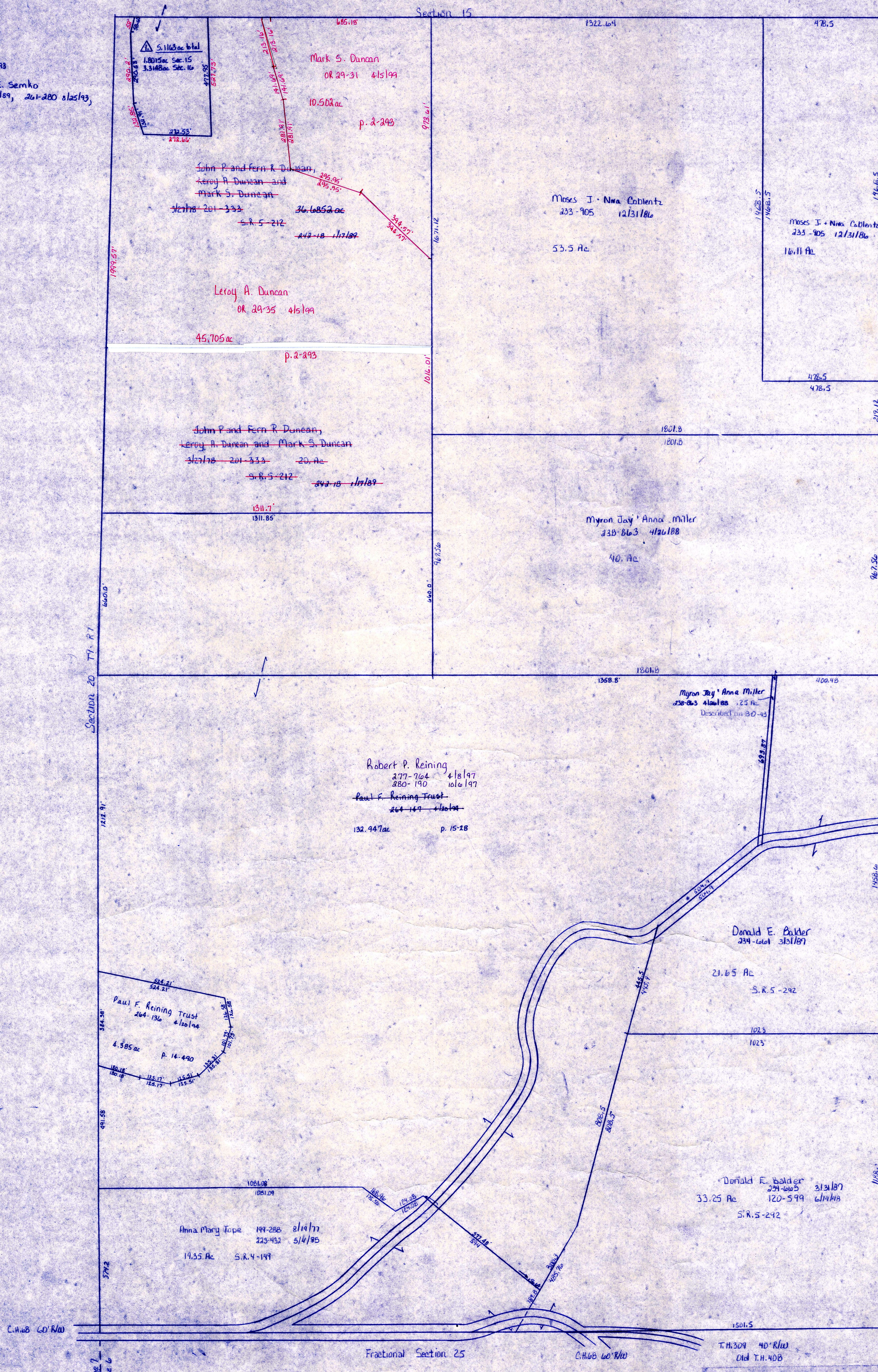


△ Duncan Allotment No. 1
 PLAT 15-4 platted 8/16/93
 1. Leroy A. Duncan & Marie E. Semko
 201-335 12/17/93, 202-18 1/17/93, 201-280 01/25/93,
 201-903 10/13/93



LET IT BE KNOWN THIS MAP HAS BEEN PREPARED
 AS A REFERENCE GUIDE TO PROPERTY OWNERSHIP.
 WE BELIEVE THIS INFORMATION TO BE CORRECT
 AND CURRENT, HOWEVER, IT IS NOT INTENDED
 FOR ANY LEGAL USE, WHETHER IT BE IN SALES,
 TRANSFERS, TRADES, LEASES OF ANY TYPE, ETC.
 AND DO NOT ACCEPT RESPONSIBILITY FOR ERRORS
 OF ANY NATURE OR OMISSIONS CONTAINED HEREIN.

T-9, R-6, Sec. 16
 HARDY TWP.
 SCALE 1"=200'