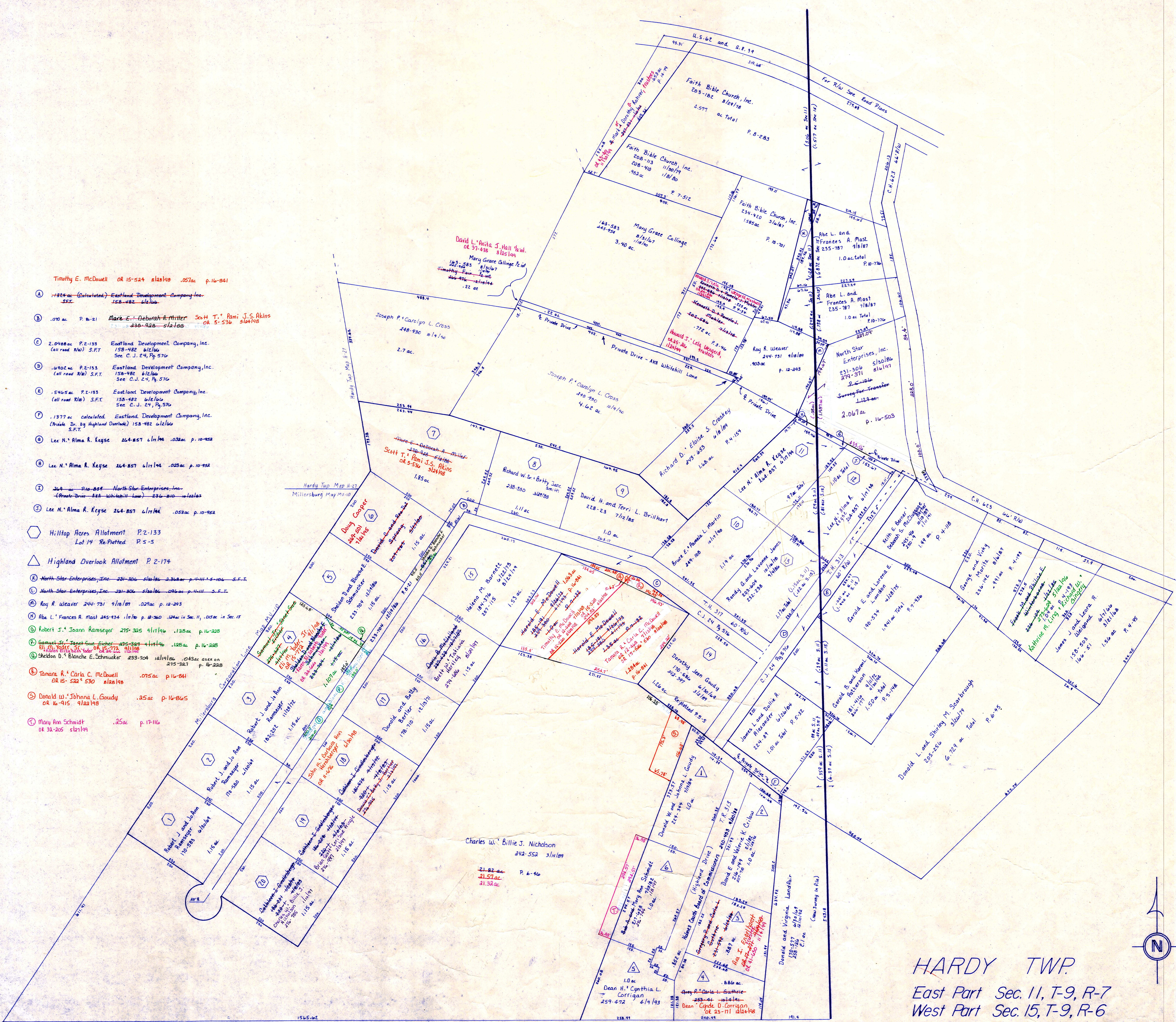


- Timothy E. McDowell OR 15-524 812/198 .057ac p.16-841
- (A) .124 ac (Calculated) Eastland Development Company, Inc. 158-482 812/198
- (B) .070 ac P. 8-21 Marc E. Deborah A. Miller Scott T. Pam J.S. Atkins OR 5-536 812/198
- (C) 2.048 ac P. 2-133 Eastland Development Company, Inc. 158-482 812/198 Sec. C.J. 24, P. 576
- (D) .640 ac P. 2-133 Eastland Development Company, Inc. 158-482 812/198 Sec. C.J. 24, P. 576
- (E) .540 ac P. 2-133 Eastland Development Company, Inc. 158-482 812/198 Sec. C.J. 24, P. 576
- (F) .1377 ac (Calculated) Eastland Development Company, Inc. (Private Dr. by Highland Overlook) 158-482 812/198 S.F.T.
- (G) Lee N. Alma R. Keyse 264-857 411/194 .023ac p.10-952
- (H) Lee N. Alma R. Keyse 264-857 411/194 .023ac p.10-952
- (I) .264 ac P. 10-851 North Star Enterprises, Inc. (Private Drive - 444 Whitehill Lane) 836-810 812/198
- (J) Lee N. Alma R. Keyse 264-857 411/194 .023ac p.10-952
- (K) Hilltop Acres Allotment P. 2-133 Lot 14 RePlatted P. 5-5
- (L) Highland Overlook Allotment P. 2-174
- (M) North Star Enterprises, Inc. 231-306 812/198 2.368 ac p.4-111-5-106 S.F.T.
- (N) North Star Enterprises, Inc. 231-306 812/198 2.368 ac p.4-111-5-106 S.F.T.
- (O) Roy R. Weaver 244-731 9/18/89 .027ac p.12-293
- (P) Abe L. Frances A. Mast 245-934 1/18/89 p. 12-260 .124 ac in Sec. 11, .057 ac in Sec. 15
- (Q) Robert J. Joann Ramseyer 275-325 9/11/89 .128 ac p.16-228
- (R) Samuel J. Josephine 275-325 9/11/89 .128 ac p.16-228
- (S) Sheldon D. Blanche E. Schmuicker 293-704 1/11/89 .043 ac in Sec. 11, .043 ac in Sec. 15 275-327 p. 16-228
- (T) Tamara R. Carla C. McDowell OR 15-524 812/198 .075 ac p.16-841
- (U) Donald W. Johnna L. Goudy OR 16-915 9/22/89 .25 ac p.16-865
- (V) Mary Ann Schmidt .25 ac p.17-116



HARDY TWP  
 East Part Sec. 11, T-9, R-7  
 West Part Sec. 15, T-9, R-6  
 SCALE 1"=100'

LET IT BE KNOWN, THIS MAP HAS BEEN PREPARED AS A REFERENCE GUIDE TO PROPERTY OWNERSHIP. WE BELIEVE THIS INFORMATION TO BE CORRECT AND CURRENT, HOWEVER, IT IS NOT INTENDED FOR ANY LEGAL USE, WHETHER BY DEED, TRANSFER, TRADES, LEASES OF ANY TYPE, ETC. AND DO NOT ACCEPT RESPONSIBILITY FOR ERRORS OF ANY NATURE OR OMISSIONS CONTAINED HEREIN.

H-27A