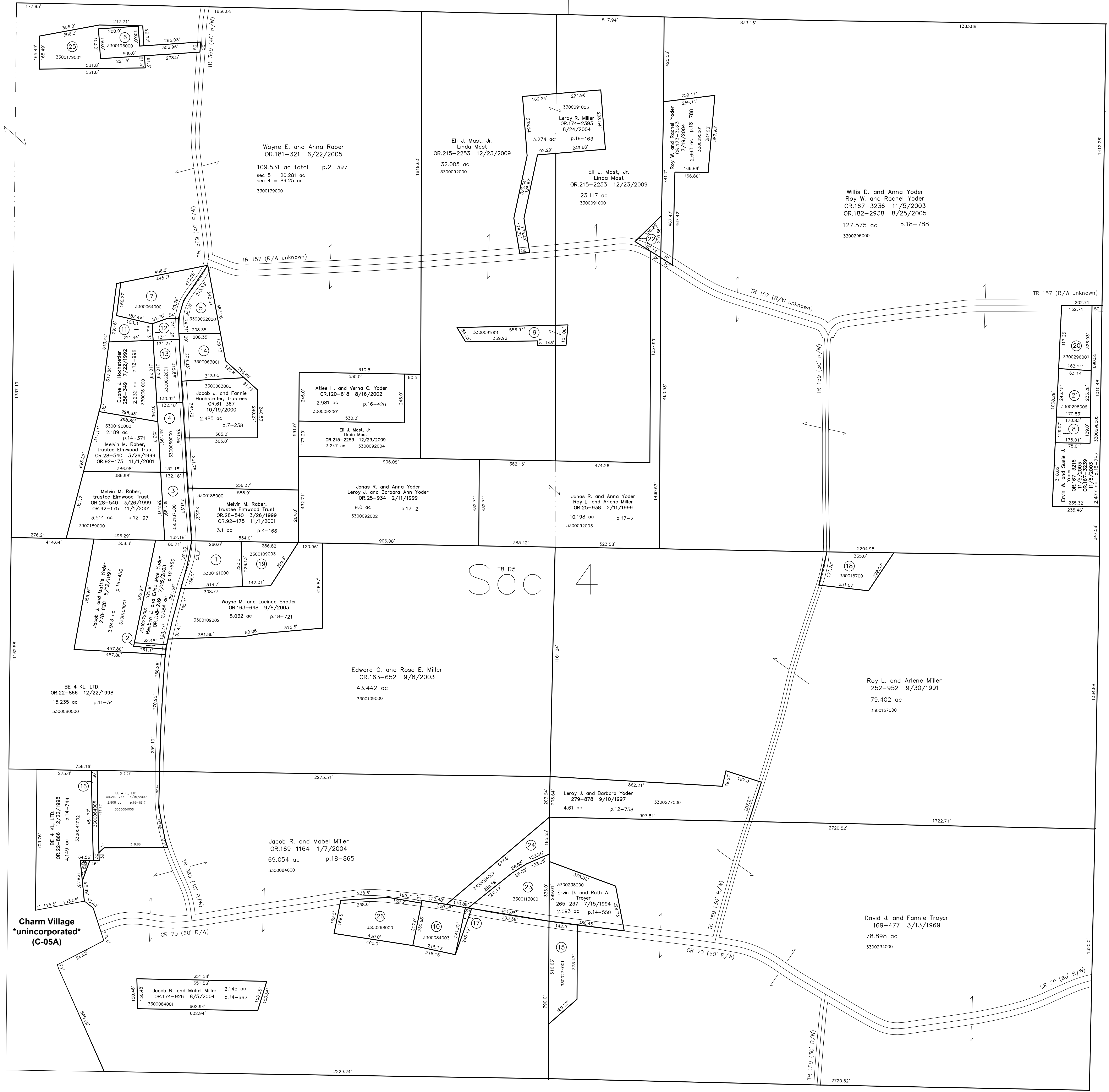


- 3300191000 ① Melvin M. Rober, trustee Elmwood Trust
OR.28-540 3/26/1999
OR.92-175 11/1/2001
1.5 ac p.4-106
- 3300272000 ② Jacob J. and Mattie Yoder
187-622 6/21/1974
228-978 10/7/1985
0.078 ac p.1-282
- 3300187000 ③ Melvin M. Rober, trustee Elmwood Trust
OR.28-540 3/26/1999
OR.92-175 11/1/2001
1.07 ac p.7-438
- 3300060000 ④ Duane J. Hochstetler
256-288 7/20/1992
1.07 ac p.7-438
- 3300062000 ⑤ Jacob J. Hochstetler Family Properties, LLC
OR.133-236 12/19/2002
1.028 ac p.18-486
- 3300195000 ⑥ Wayne H. and Lizzie Ann Rober
280-571 7/6/1993
0.137 ac p.14-248
- 3300064000 ⑦ Leon Hochstetler
258-189 12/16/1992
1.811 ac p.14-106
- 3300296004 ⑧ Ervin W. and Susie J. Yoder
OR.167-3216 11/5/2003
OR.167-3219 11/5/2003
0.512 ac p.18-786
- 3300091001 ⑨ John Henry and Lena D. Mast
OR.20-835 11/18/1998
1.013 ac p.18-028
- 3300084003 ⑩ Henry B. and Mary Yoder
OR.133-230 12/19/2002
1.188 ac p.17-40
- 3300061001 ⑪ Leon Hochstetler
OR.133-233 12/19/2002
0.609 ac p.18-486
- 3300062002 ⑫ Leon Hochstetler
OR.133-230 12/19/2002
0.301 ac p.18-486
- 3300062001 ⑬ Duane J. Hochstetler
OR.133-227 12/19/2002
0.941 ac p.18-486
- 3300063001 ⑭ Jacob J. Hochstetler Family Properties, LLC
OR.133-236 12/19/2002
1.27 ac p.18-486
- 3300234001 ⑮ Ervin D. and Ruth A. Troyer
OR.157-486 7/21/2003
1.449 ac p.18-682
- 3300084006 ⑯ BE 4 KL, LTD.
OR.156-69 7/9/2003
0.311 ac p.18-669
- 3300084005 ⑰ Henry B. and Mary Yoder
OR.156-67 7/9/2003
0.087 ac p.18-669
- 3300157001 ⑱ Roy L. and Arlene J. Miller
OR.204-207 4/22/2008
1.228 ac p.18-719
- 3300190003 ⑲ Melvin M. Rober, trustee of the Elmwood Trust
OR.167-2193 10/28/2003
1.098 ac p.18-775
- 3300297007 ⑳ Willis D. and Anna Yoder
OR.167-3231 11/5/2003
1.167 ac p.18-786
- 3300296006 ㉑ Ervin W. and Susie J. Yoder
OR.167-3229 11/5/2003
OR.167-3239 11/5/2003
0.917 ac p.18-786
- 3300091002 ㉒ Roy W. and Rachel Yoder
OR.173-3023 7/19/2004
0.316 ac p.18-768
- 3300113000 ㉓ David R. and Mary Miller
OR.178-2474 3/11/2005
1.722 ac p.12-917
- 3300084007 ㉔ David R. and Mary Miller
OR.180-2510 6/8/2005
1.364 ac p.19-423
- 3300179001 ㉕ Wayne H. and Lizzie Ann Rober
OR.181-318 8/22/2005
1.714 ac p.2-397
- 3300288000 ㉖ Henry B. and Mary Yoder
174-494 8/19/1970
280-612 5/27/1993
1.92 ac p.5-48

T8, R5, Sec. 5 C-05



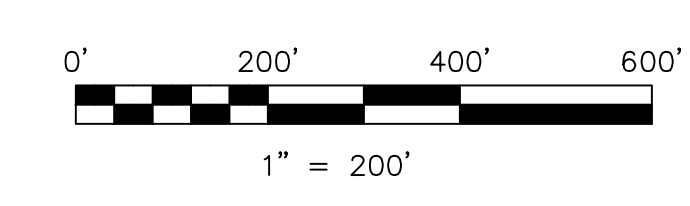
Sec 4

T8, R5, Sec. 3 C-15

T8, R5, Sec. 7 C-09

Last Revision: 12/23/2009

T-8, R-5, Sec.4
Clark Twp.
Holmes County, Ohio



LET IT BE KNOWN, THIS MAP HAS BEEN PREPARED AS A REFERENCE GUIDE TO PROPERTY OWNERSHIP. WE BELIEVE THIS INFORMATION TO BE CORRECT AND CURRENT, HOWEVER IT IS NOT INTENDED FOR ANY LEGAL USE, WHETHER IT BE IN SALES, TRANSFERS, TRUSTS, LEASES OF ANY TYPE, ETC., AND DO NOT ACCEPT RESPONSIBILITY FOR ERRORS OF ANY NATURE OR OMISSIONS CONTAINED HEREIN.

new survey required for next transfer

C-10

