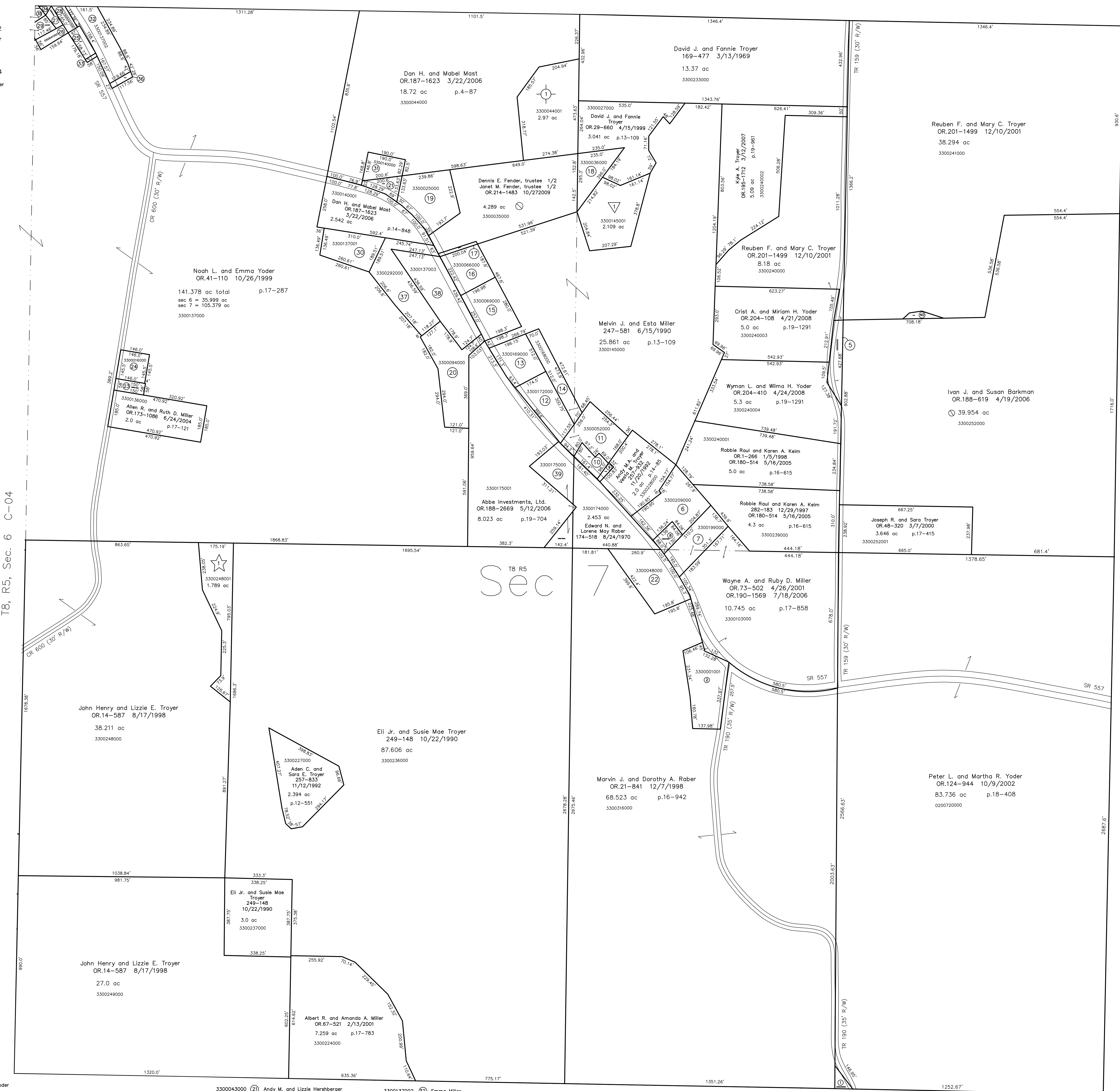


- ☆ Charm View Subdivision
Plat 18-462 Platted 12/9/2002
3300248001 John Henry and Lizzie E. Troyer
OR.145-655 4/16/2003
1.789 ac p.18-462
- Pine Tree Grove Subdivision
Plat 19-127 Platted 7/16/2004
3300044001 David A. and Miriam Hershberger
OR.174-1758 8/16/2004
2.97 ac p.19-127
- ▽ Sunny Slope Subdivision
Plat 18-67 Platted 8/31/2001
3300145001 Aden Ray and Esther Miller
OR.87-855 9/19/2001
2.109 ac p.18-67



T8, R5, Sec. 6 C-04

T8, R5, Sec. 8 C-14

T8 R5
Sec 7

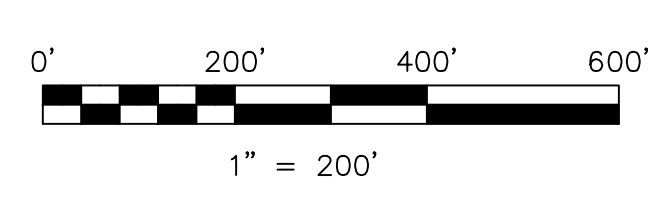
- 3300349000 1 Willis A. and Barbara Ann Yoder
251-630 6/7/1991
0.119 ac p.12-671
- 3300002000 2 Daniel N. Miller
OR.207-1582 10/24/2008
1.616 ac p.19-1399
- 0000000000 3 not used
- 0000000000 4 not used
- 3300252002 5 Ivan J. and Susan Barkman
OR.188-619 4/19/2006
0.52 ac
- 3300209000 6 Abe J. Yoder
OR.172-2443 6/1/2004
OR.172-3050 6/7/2004
1.62 ac p.14-85
- 3300199000 7 David W. Yoder
OR.179-67 3/24/2005
0.108 ac
- 3300197000 8 David W. Yoder
OR.179-67 3/24/2005
0.262 ac p.5-11
- 3300051000 9 Benjamin A. and Fannie V. Miller
OR.180-2076 6/2/2005
0.06 ac p.8-14
- 3300050000 10 Benjamin A. and Fannie V. Miller
OR.180-2076 6/2/2005
0.32 ac p.8-15
- 3300052000 11 Benjamin A. and Fannie V. Miller
OR.180-2076 6/2/2005
1.31 ac p.8-15

- 3300172000 12 Mahlon D. and Kristina Marie Rober
OR.197-2278 6/12/2007
1.1 ac p.4-146
- 3300169000 13 Aden J. and Clara A. Rober
236-222 8/18/1987
0.925 ac p.2-125
- 3300168000 14 Aden J. and Clara A. Rober
236-222 8/18/1987
0.79 ac p.4-167
- 3300069000 15 Harold R. and Esther D. Keim
255-979 4/17/1992
OR.182-1904 8/16/2005
1.214 ac p.12-966
- 3300066000 16 Albert A. and Susie A. Keim, trustees
OR.207-768 9/29/2008
0.928 ac p.2-125
- 3300067000 17 Albert A. and Susie A. Keim, trustees
OR.207-768 9/29/2008
0.069 ac p.14-527
- 3300036000 18 Dennis E. Fender, trustee 1/2
Janet M. Fender, trustee 1/2
OR.214-1483 10/27/2009
0.8 ac
- 3300025000 19 Albert A. and Susie A. Keim, trustees
OR.207-768 9/29/2008
1.569 ac p.14-821
- 3300094000 20 Susan Mast
OR.197-3022 6/21/2007
OR.200-660 10/10/2007
2.06 ac p.5-112

- 3300043000 21 Andy M. and Lizzie Hershberger
259-192 3/16/1993
0.313 ac p.14-169
- 3300048000 22 Marvin J. and Dorothy A. Rober
OR.94-70 11/21/2001
1.9 ac p.5-92
- 3300017000 23 Albert J. and Verda Erb
150-300 6/3/1963
0.202 ac p.3-5 B
- 3300160000 24 Albert J. and Verda Erb
150-300 6/3/1963
0.49 ac
- 3300100000 25 Amanda A. Miller, trustee
OR.63-307 11/30/2000
0.058 ac p.17-259
- 3300041002 26 Eric A. Guggisberg
274-923 8/23/1996
0.2 ac
- 3300041003 27 Eric A. Guggisberg
274-923 8/23/1996
0.105 ac
- 3300041000 28 Eric A. Guggisberg
274-923 8/23/1996
0.25 ac
- 3300138000 29 Eric A. Guggisberg
OR.39-979 10/5/1999
0.166 ac p.17-259
- 3300137001 30 Noah L. and Emma Yoder
267-427 1/27/1995
1.049 ac p.14-715
- 3300140000 31 Andy M. and Lizzie Hershberger
OR.181-658 6/27/2005
0.5 ac p.19-437

- 3300137002 32 Emma Miller
OR.20-81 11/12/1998
1.165 ac p.16-914
- 3300137004 33 Amanda A. Miller, trustee
OR.63-405 11/30/2000
0.024 ac p.17-259
- 3300041001 34 East Holmes Local Board of Education
OR.39-981 10/5/1999
0.035 ac p.17-259
- 3300139001 35 East Holmes Local Board of Education
OR.39-977 10/5/1999
0.058 ac p.17-259
- 3300137005 36 Emma Miller
OR.4-118 10/26/1999
0.075 ac p.17-259
- 3300292000 37 Noah L. and Emma Yoder
256-369 9/19/1988
1.761 ac p.12-997
- 3300137003 38 Noah L. and Emma Yoder
OR.35-150 7/15/1999
1.923 ac p.17-178
- 3300175000 39 Edward N. and Lorene May Rober
174-518 8/24/1970
1.054 ac
- 3300241001 40 Ivan J. and Susan Barkman
OR.188-632 4/19/2006
0.106 ac p.19-719

T8, R5, Sec. 14 C-08



LET IT BE KNOWN THIS MAP HAS BEEN PREPARED AS A REFERENCE GUIDE TO PROPERTY OWNERSHIP. WE BELIEVE THIS INFORMATION TO BE CORRECT AND CURRENT. HOWEVER IT IS NOT INTENDED FOR ANY LEGAL USE, WHETHER IT BE IN SALES, TRANSFERS, TRADES, LEASES OF ANY TYPE, ETC., AND DO NOT ACCEPT RESPONSIBILITY FOR ERRORS OF ANY NATURE OR OMISSIONS CONTAINED HEREIN.

new survey required for next transfer

Last Revision: 10/27/2009

T-8, R-5, Sec.7
Clark Twp.
Holmes County, Ohio

C-09