

- MILLER URA D. AND AMANDA 241-701 12/28/1988 0.974 ac p.12-119
- MILLER ALBERT A. AND MARY MAE 182-151 11/7/1972 0.078 ac p.3-59
- JEDER, INC. 241-767 12/29/1988 0.001 ac p.11-193
- YODER CUMA 145-339 5/19/1961 226-592 3/22/1985 238-675 4/7/1988 0.148 ac p.3-27B
- MISHLER DAVID E. AND STACY N. MILLER 0R.0093-569 11/16/2001 0R.0120-613 8/16/2002 0.652 ac

- SOMMERS STEWARD P. AND SHIRLEY 237-701 1/5/1988 0.264 ac
- SOMMERS STEWARD P. AND SHIRLEY 237-701 1/5/1988 0.59 ac
- TROYER GARY R. AND ARLENE 269-421 7/17/1995 0.518 ac p.3-86B
- COLUMBIA GAS OF OHIO, INC. 170-537 6/24/1969 0.12 ac p.5-4
- STUTZMAN ROBERT L. AND SONYA K. 0R.0025-813 2/9/1999 1.109 ac p.16-100D
- MAST LEW J. AND IRENE A. 235-579 6/15/1987 0.47 ac

- MAST LEW J. AND IRENE A. 235-579 6/15/1987 0.27 ac
- BROWN SHIRLEY P. TRUSTEE 0R.0043-164 12/2/1999 0.39 ac
- BROWN SHIRLEY P. TRUSTEE 0R.0042-162 11/24/1999 0.39 ac
- BROWN SHIRLEY P. TRUSTEE 0R.0017-36 9/24/1998 0.39 ac
- Roman L. Jr. and Naomi J. Kandel 0R.176-1708 11/18/2004 0.167 ac
- TROYER WAYNE E. 0R.0073-847 5/1/2001 0.091 ac

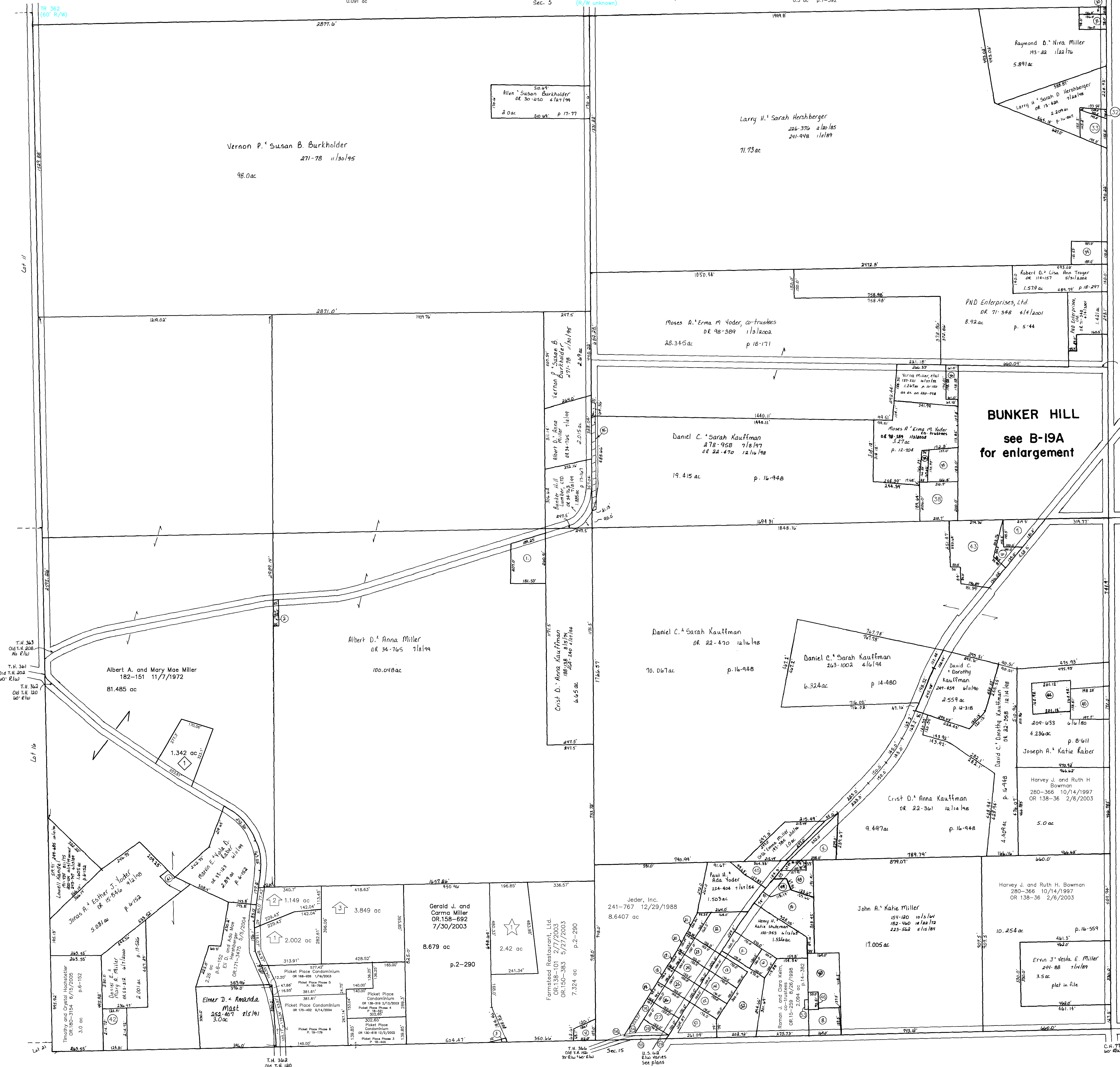
- MILLER ANDREW A. JR. AND LUZZIE ANN CO-TRUSTEES 0R.0026-877 4/2/1999 0.092 ac
- DROYZ, LTD. 0R.0125-492 10/16/2002 0.091 ac p.12-181
- TROYER WAYNE E. 0R.0073-847 5/1/2001 0.103 ac p.8-70
- HERSHBERGER WILLIS D. AND RUTH W. 265-196 7/12/1994 0.18 ac p.8-70
- HERSHBERGER WILLIS D. AND RUTH W. 265-196 7/12/1994 0.67 ac
- Roman L. Jr. and Naomi J. Kandel 0R.176-1708 11/18/2004 0.1132 ac p.4-137

- TROYER WAYNE E. 0R.0073-847 5/1/2001 0.34 ac
- TROYER WAYNE E. 0R.0073-847 5/1/2001 0.34 ac
- MILLER ANDREW A. JR. AND LUZZIE ANN CO-TRUSTEES 0R.0026-877 4/2/1999 0.34 ac
- DROYZ, LTD. 0R.0125-492 10/16/2002 0.34 ac
- KANDEL ROMAN L. JR. AND NAOMI J. 0R.176-1708 11/18/2004 0.34 ac
- Roman L. Jr. and Naomi J. Kandel 0R.176-1708 11/18/2004 0.1132 ac p.4-137

- 0100657000 Clyde E. and Mary K. Sundheimer 162-507 5/26/1967 0R.69-778 5/16/2001 0.0498 ac p.4-137
- TROYER DANIEL D. AND WILMA 281-827 12/12/1997 0.12 ac p.7-560
- YODER ROBERT R. AND LORI R. 0R.0134-787 1/9/2003 0.243 ac
- Larry H. and Sarah Hershberger 0R.185-805 12/6/2005 0.087 ac
- Larry H. and Sarah Hershberger 0R.185-805 12/6/2005 0.5 ac
- WEAVER PAUL E. AND FANNIE 189-721 2/4/1975 0.5 ac p.7-392

- COUNTY OF HOLMES SEE CARD 102-314 10/24/1934 0.25 ac
- YODER ELI D. AND ELSIE A. 0R.0124-341 10/4/2002 0.25 ac p.8-656
- BUENA VISTA ESTATES 268-522 5/10/1995 0.68 ac p.8-164
- KAUFFMAN DAVID C. AND DOROTHY 0R.0176-2481 11/29/2004 0.98 ac
- BUENA VISTA ESTATES 268-523 5/10/1995 0.152 ac p.12-366
- RABER JOSEPH A. AND KATIE 277-466 3/12/1997 0.75 ac p.12-705

- MILLER ALBERT A. AND MARY MAE 0R.0052-279 5/17/2000 0.158 ac p.17-552
- Timothy and Crystal Hochstetler 0R.180-3154 6/15/2005 0.615 ac p.17-526
- 0100576000 KAUFFMAN DAVID C. AND DOROTHY 0R.0176-2481 11/29/2004 1.86 ac p.7-312
- KAUFFMAN DAVID C. AND DOROTHY 0R.0176-2481 11/29/2004 0.75 ac p.14-352
- Signature Builders of Berlin, Ltd. 0R.181-2377 7/12/2005 0.497 ac p.14-363



- 0100269000 Gary R. and Arlene Troyer 0R.183-701 9/13/2005 0.106 ac p.14-858
- Not used
- G & S STORAGE ENTERPRISES, LTD. 275-53 9/3/1996 0.447 ac p.16-213
- G & S STORAGE ENTERPRISES, LIMITED 276-543 12/20/1996 0.224 ac p.16-312
- TROYER GARY R. AND ARLENE 269-421 7/17/1995 0.996 ac p.4-105
- BROWN SHIRLEY P. TRUSTEE 0R.0043-164 12/2/1999 0.649 ac p.16-941
- BROWN SHIRLEY P. TRUSTEE 0R.0043-164 12/2/1999 1.363 ac p.16-941
- 0100059003 Gary R. and Arlene Troyer 0R.183-701 9/13/2005 0.022 ac p.19-492
- 0100519002 Berlin Township Trustees 0R.184-2626 11/10/2005 0.0728 ac p.2-411
- 0100656001 Berlin Township Trustees 0R.184-2629 11/10/2005 0.0492 ac p.2-411
- 0100269000 Gary R. and Arlene Troyer 0R.183-701 9/13/2005 0.106 ac p.14-858
- Not used
- G & S STORAGE ENTERPRISES, LTD. 275-53 9/3/1996 0.447 ac p.16-213
- G & S STORAGE ENTERPRISES, LIMITED 276-543 12/20/1996 0.224 ac p.16-312
- TROYER GARY R. AND ARLENE 269-421 7/17/1995 0.996 ac p.4-105
- BROWN SHIRLEY P. TRUSTEE 0R.0043-164 12/2/1999 0.649 ac p.16-941
- BROWN SHIRLEY P. TRUSTEE 0R.0043-164 12/2/1999 1.363 ac p.16-941
- 0100059003 Gary R. and Arlene Troyer 0R.183-701 9/13/2005 0.022 ac p.19-492
- 0100519002 Berlin Township Trustees 0R.184-2626 11/10/2005 0.0728 ac p.2-411
- 0100656001 Berlin Township Trustees 0R.184-2629 11/10/2005 0.0492 ac p.2-411

- Forsaken Acres Subdivision** Plot 18-774 Plotted 9/24/2003  
0100342003 MILLER MARK A. AND LUZZIE ANN 0R.0167-174 10/1/2003 1.342 ac
- Meadowdale Subdivision** Plot 19-193 Plotted 9/16/2004
- MILLER LAWRENCE AND SUSAN M. 0R.0022-208 12/11/1998 0R.0022-210 12/11/1998 2.002 ac
- MILLER LAWRENCE AND SUSAN M. 0R.0022-208 12/11/1998 0R.0022-210 12/11/1998 1.149 ac
- MILLER LAWRENCE AND SUSAN M. 0R.0022-208 12/11/1998 0R.0022-210 12/11/1998 3.849 ac

- Merit Seed Subdivision** Plot 19-569 Plotted 12/12/2005  
0100836006 John D. and Betty Miller 0R.185-3145 12/30/2005 2.42 ac p.19-569

T-9,R-5,  
Sec. 6  
BERLIN TWP.

SCALE 1" = 200'  
Last Revision: 12/30/2005

LET IT BE KNOWN, THIS MAP HAS BEEN PREPARED AS A REFERENCE GUIDE TO PROPERTY OWNERSHIP. WE BELIEVE THIS INFORMATION TO BE CORRECT AND CURRENT, HOWEVER, IT IS NOT INTENDED FOR ANY LEGAL USE, WHETHER IT BE IN SALES, TRANSFERS, TRADES, LEASES OF ANY TYPE, ETC., AND DO NOT ACCEPT RESPONSIBILITY FOR ERRORS OF ANY NATURE OR OMISSIONS CONTAINED HEREIN.