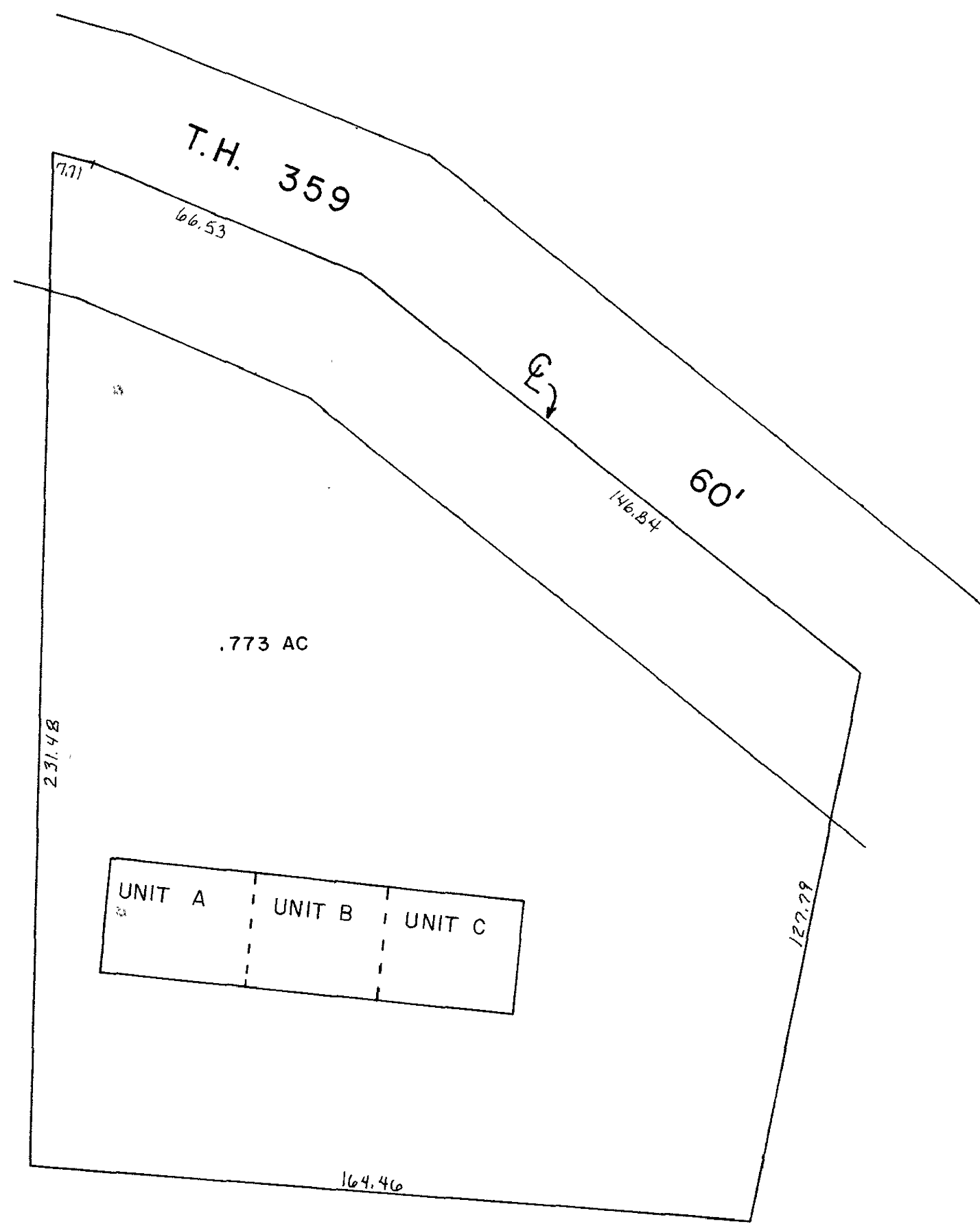


BERLIN HILLS CONDOMINIUM				
UNIT	OWNER	DEED	DATE	
A	MULLET ASSOCIATES, LTD.	OR.0003-127	2/10/1998	
B	MULLET ASSOCIATES, LTD.	OR.0003-127	2/10/1998	
C	MULLET ASSOCIATES, LTD.	OR.0003-127	2/10/1998	
COMMON AREA	EACH UNIT OWNS UNDIVIDED ONE-THIRD		2/12/89	3/22/89



BERLIN HILLS CONDOMINIUM

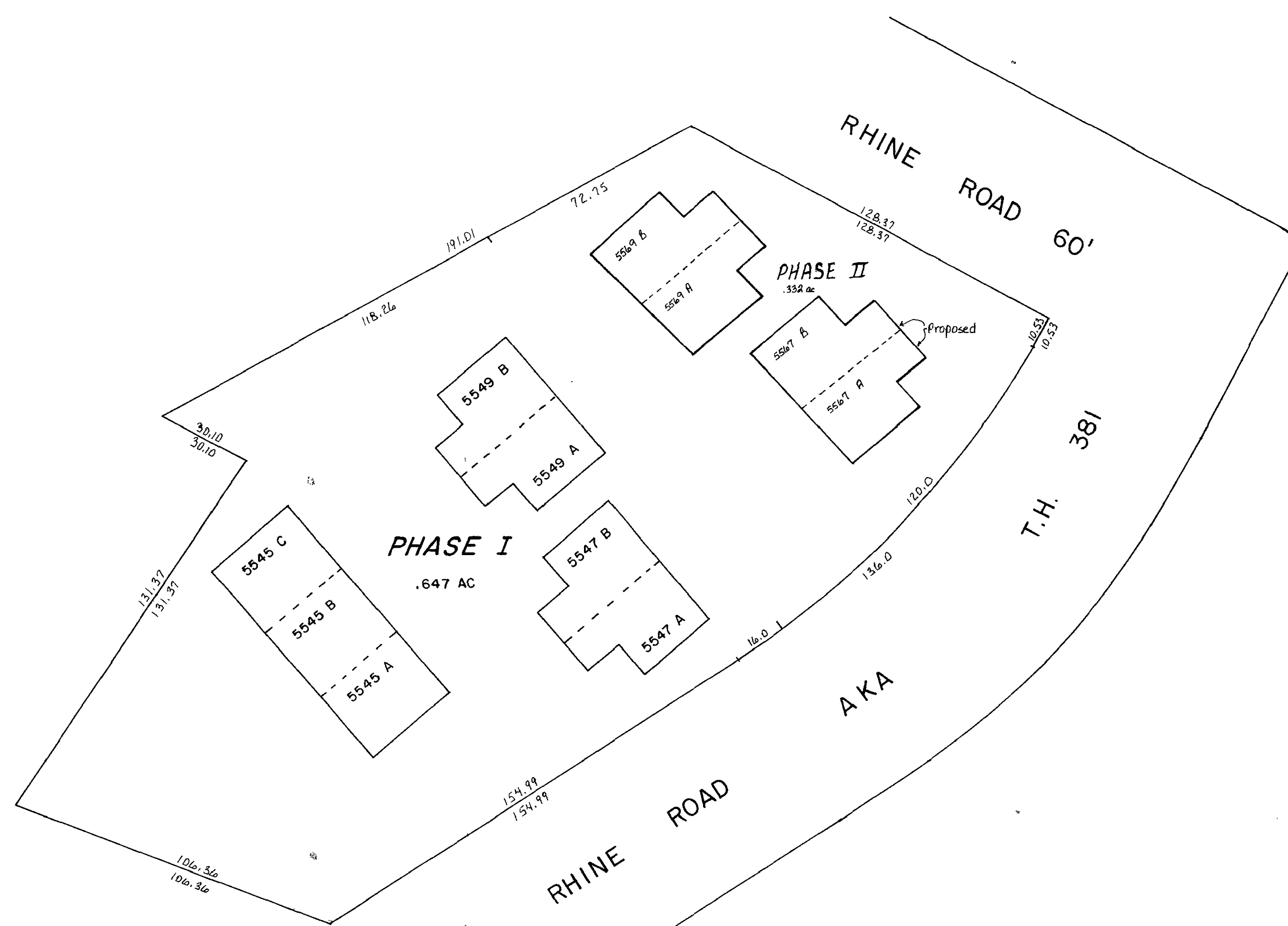
Lot 21, 1st Qtr., T-9, R-6 (See Map B-13B)

Scale 1" = 30'

Declaration: Vol. 242, Pg. 615 3-20-1989

Plat Vol. 13, Pg. 59-60

LAUREL RUN CONDOMINIUM PHASE I				
UNIT	OWNER	DEED	DATE	
5545 A	YODER NATHAN D.	OR.0073-870	5/1/2001	
5545 B	KAUFMANN RACHEL	245-147	10/25/1989	
5545 C	YODER JOHN E.	OR.0076-442	5/30/2001	
5547 A	Chester D. Mullet	OR.178-18	2/2/2005	
5547 B	YODER JAMES D.	OR.0042-88	11/12/1999	
5549 A	Steven D. Hershberger	OR.185-2964	12/30/2005	
5549 B	MILLER BONNIE	245-350	10/25/1989	
COMMON AREA	EACH UNIT OWNS UNDIVIDED ONE-ELEVENTH		248-645 243-278	9/13/90 6/14/89
5567 A	0101371009 TROYER VAUGHN W. AND INGA A.	OR.0174-430	8/2/2004	
5567 B	COAST SANDRA S.	OR.0126-223	10/23/2002	
5569 A	James E. Hershberger	OR.185-467	12/2/2005	
5569 B	PIONEER TRAILS REALTY, LTD.	OR.0090-405	10/12/2001	



LAUREL RUN CONDOMINIUM

Lot 11B, Second Stutzman S.D. located in
Lot 21, 1st Qtr., T-9, R-6 (See Map B-13B)

Scale 1" = 30'

Declaration: Vol. 243, Pg. 778 6-14-1989

Plat Vol. 2, Pg. 211-215

LET IT BE KNOWN, THIS MAP HAS BEEN PREPARED AS A REFERENCE GUIDE TO PROPERTY OWNERSHIP. WE BELIEVE THIS INFORMATION TO BE CORRECT AND CURRENT; HOWEVER, IT IS NOT INTENDED FOR ANY LEGAL USE, WHETHER IT BE IN SALES, TRANSFERS, TRADES, LEASES OF ANY TYPE, ETC., AND DO NOT ACCEPT RESPONSIBILITY FOR ERRORS OF ANY NATURE OR OMISSIONS CONTAINED HEREIN.

CONDOMINIUMS

Last Revision: 12/30/2005

B-13C