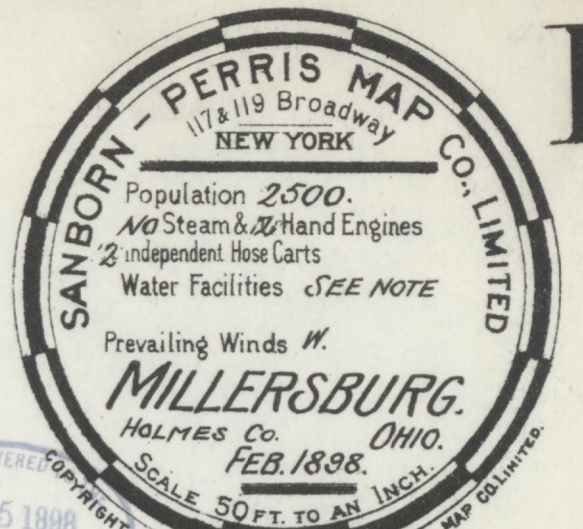


# INDEX.

STREETS.	BOOK	STREET	BOOK	STREET	BOOK
Adams, .....	A	Smith, .....	S	Farrell, W. J., Foundry and Mach. Shs.	F
" .....	"	" .....	"	Findley, Adams & Co., Saw & Plan'g M'l.	"
" .....	"	Washington, .....	W	Frank, S., Grain Warehouse, .....	"
Clay, .....	C	" .....	"	Fritz, F. W., Building, .....	"
" .....	"	" .....	"	Gadfield, C. L., Machine Shop, .....	G
Clinton, .....	"	" .....	"	Hecker, Miller & Co., Empire Roller M'ls	H
" .....	"	" .....	"	Henderson Hotel, .....	"
" .....	"	" .....	"	Hull, H. C., Bottling, .....	"
Crawford, .....	"	" .....	"	Larimer Hotel, .....	L
Grant, .....	G	" .....	"	Leppia Bros., Carriage Pae. & Wagon Sh.	"
Jackson or Main, .....	J	" .....	"	Methodist Episcopal Church, .....	M
" .....	"	" .....	"	Millersburg Creamery, .....	"
Liberty, .....	L	" .....	"	Electric Light Co., .....	"
Mad Anthony, .....	M	" .....	"	Mitchell, J. H., Planing Mill, &c., .....	"
Monroe, .....	"	" .....	"	Opera House, .....	O
" .....	"	" .....	"	Presbyterian Church, .....	P
Perkins, .....	P	" .....	"	Public School, .....	"

NOTE.—HOUSE NUMBERS given are arbitrary.



APR 25 1898  
Hall of Maps

APR 1 - 1898  
Register of Copyrights

NOTE.

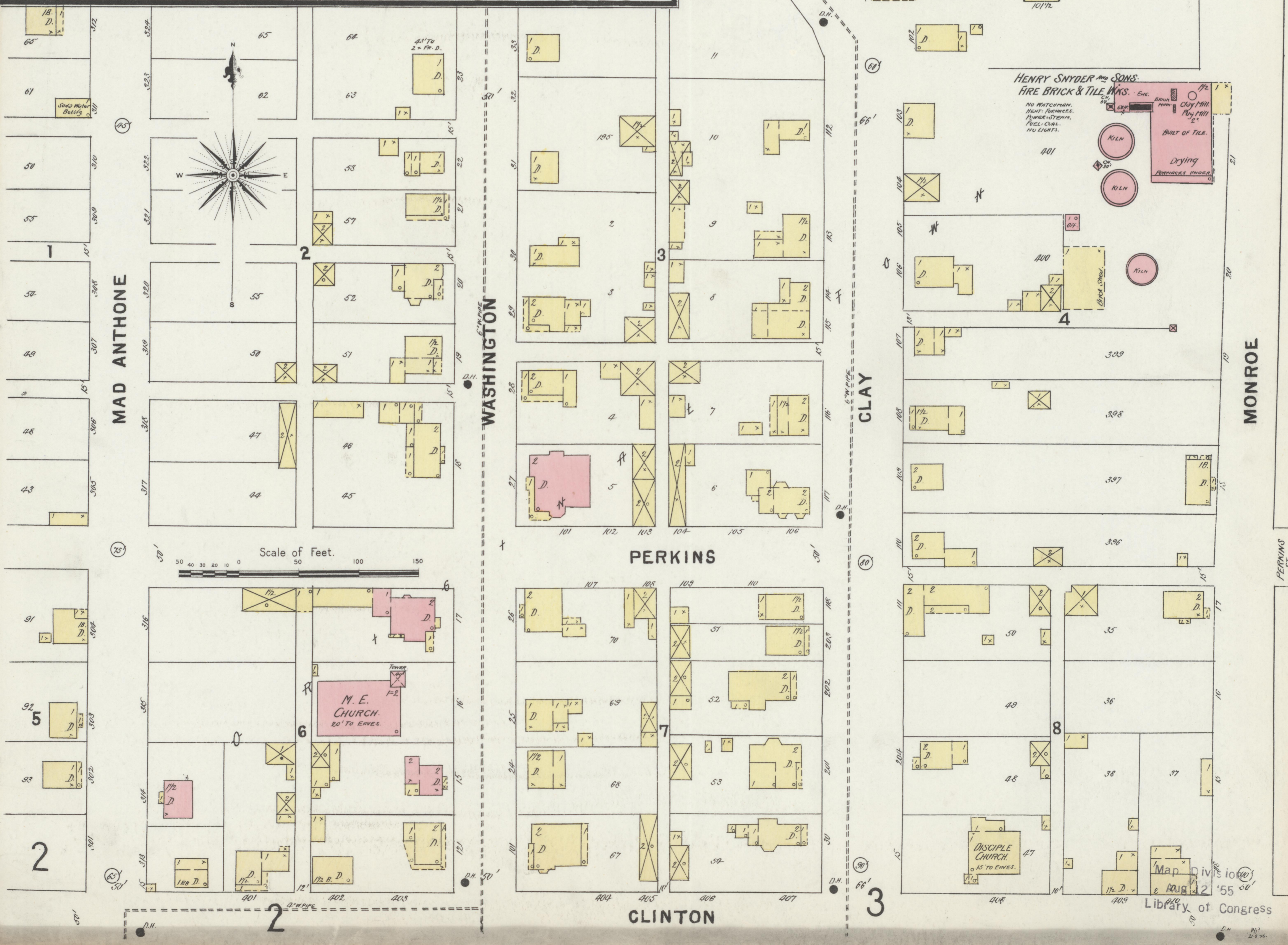
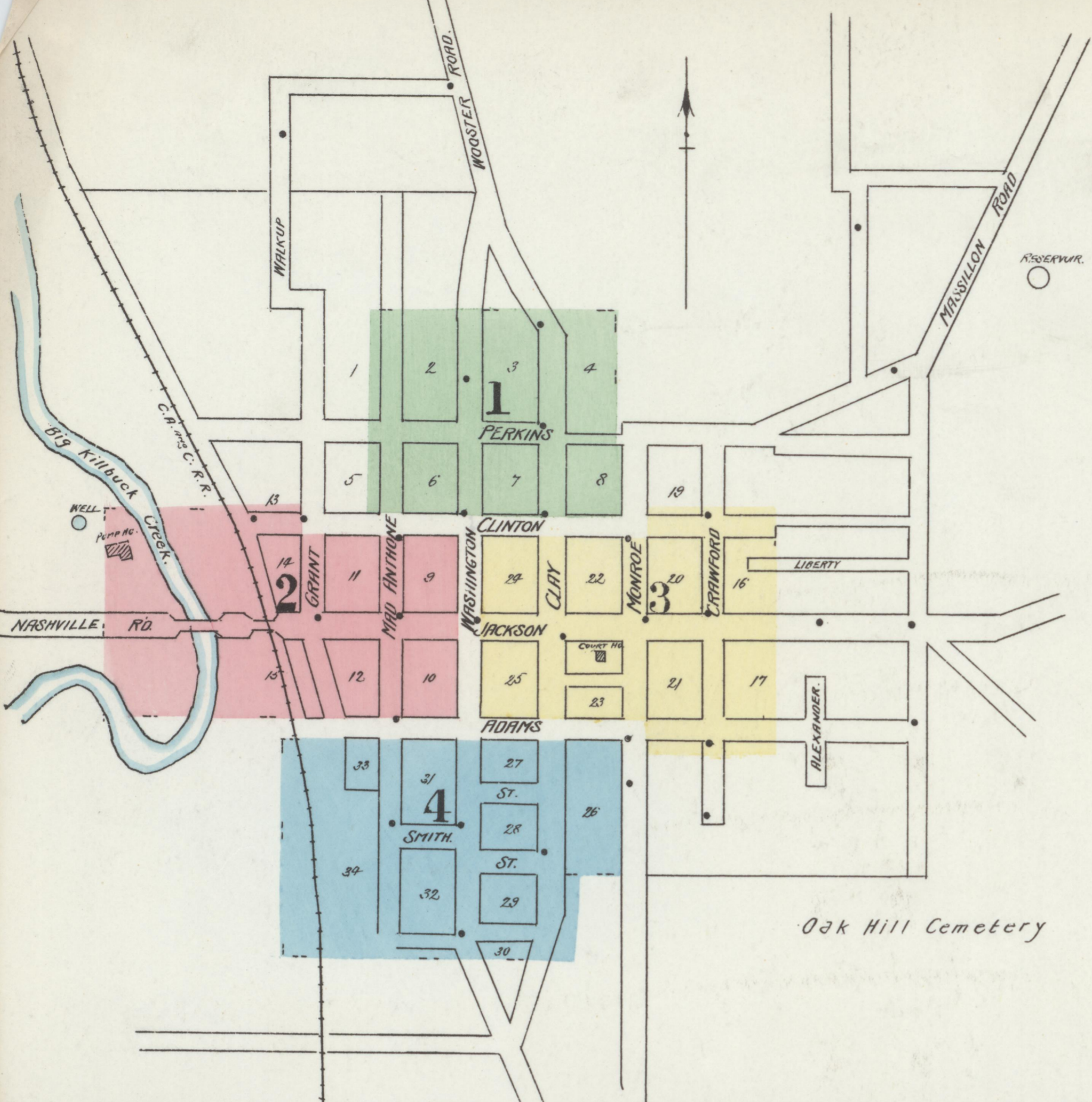
FIRE DEPT.: 1 CHIEF & 20 VOLUNTEERS.  
 FIRE APPS.: 1 VILLAGE LADDER TRUCK (REACH OF LAD. 9').  
 2 HOSE CARRS. 300' OF 1 1/2" RUBBER HOSE.  
 2 HAND ENGS. NO HORSES USED.  
 STREETS NOT PAVED, JACKSON OR MAIN ST.  
 UNCOMPLETED. STEEP GRADES IN SOME PLACES.

WATER SUPPLY: DUG WELL ON THE BANK OF BIG KILLBUCK CREEK. 26' DIAM. 42' DEEP.

WATER WKS.: ELEV. RESERVOIR: 14' DEEP, 62' DIAM.  
 ELEV. 126' HAY COURT W. S.W. AND 268' HAY  
 COURT W. CH. 40000 GALL. LOCATED 40.75  
 OF MILE N.E. OF COURT W.  
 ONE STILLWELL-BORNE-SMITH-VAILE  
 COMPRESSOR SUPPLY PUMP SIZE 12x30x12.  
 CAP. 75000 GAL. IN 20 HOURS. PUMP OPERATED  
 ALTERNATE DAYS 3/4 P.M. UP TO 10 P.M. & 4 P.M.  
 P.M. IN 35 DOUBLE HOURS. ONE PRESSURE  
 400 LBS. CAN BE INCREASED TO 100 LBS.  
 BY DIRECT PRESSURE. FIRE ALARM TOWN  
 BELL. — GASTERS SWORN ON 14TH ARE  
 STILL IN EXISTENCE.

KEY

NO. OF STORIES	3 1/2	FIRE WALL 6 IN. AB. ROOF
CONCRETE ROOF	12	"
IRON ROOF	18	"
STEAK BOILER	1	FRAME PARTITION
OPENING & IRON DOOR	1	WINDOWS - SHUTTERS
STABLE	1	WINDOW IN 1ST STORY
WINDOW IN 1ST STORY	1" & 3"	"
"	2" & 4"	"
BLDG'S COLORED YELLOW ARE FRAME	RED	BRICK
"	BLUE	STONE
"	GREY	IRON
"	BROWN	ADORE
"	GREEN	SPECIALS
"	MARKED (S) ARE CLOTH LINED	"
"	(S) INDICATE RELATIVE HEIGHTS	"
"	ALTERNATE STREET NOS ARE ACTUAL	"
"	CONSECUTIVE	"
"	BROKEN LINE NEAR BLDG - WOOD CORNICE	"
"	SOLID	METAL



Library of Congress