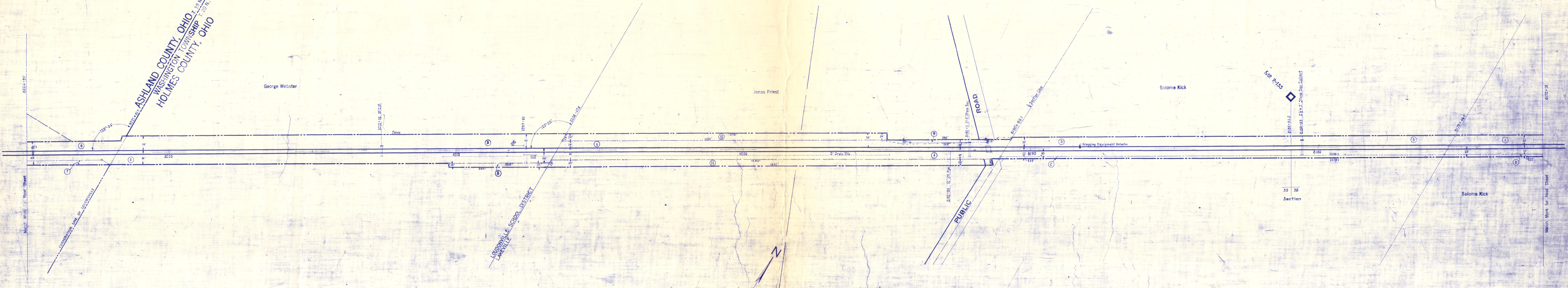


ASHLAND COUNTY, OHIO
 WASHINGTON TOWNSHIP
 HOLMES COUNTY, OHIO



V.1
OHIO
107

REVISION	DATE	BY	NO.
1929			
1926			
1927			
1928			
1929			
1930			
1931			
1932			
1933			
1934			
1935			
1936			
1937			
1938			
1939			
1940			

Correct as of Dec. 31st, 1955- No Revision
Correct as of Dec. 31st, 1954- No Revision
Correct as of Dec. 31st, 1953- No Revision
Correct as of Dec. 31st, 1952- No Revision
Correct as of Dec. 31st, 1951- No Revision
Correct as of Dec. 31st, 1950- No Revision
Correct as of Dec. 31st, 1949- No Revision
Correct as of Dec. 31st, 1948- No Revision
Correct as of Dec. 31st, 1947- No Revision
Correct as of Dec. 31st, 1946- Map Revised
Correct as of Dec. 31st, 1945- No Revision
Correct as of Dec. 31st, 1944- No Revision
Correct as of Dec. 31st, 1943- No Revision

Correct as of Dec. 31st, 1942- No Revision
Correct as of Dec. 31st, 1941- No Revision
Correct as of Dec. 31st, 1940- No Revision
Correct as of Dec. 31st, 1939- No Revision
Correct as of Dec. 31st, 1938- No Revision
Correct as of Dec. 31st, 1937- No Revision
Correct as of Dec. 31st, 1936- No Revision
Correct as of Dec. 31st, 1935- No Revision
Correct as of Dec. 31st, 1934- No Revision
Correct as of Dec. 31st, 1933- No Revision
Correct as of Dec. 31st, 1932- No Revision
Correct as of Dec. 31st, 1931- Map Revised
Correct as of Dec. 31st, 1930- Map Revised

Correct as of Dec. 31st, 1929- No Revision
Correct as of Dec. 31st, 1928- No Revision
Correct as of Dec. 31st, 1927- No Revision
Correct as of Dec. 31st, 1926- No Revision
Correct as of Dec. 31st, 1925- No Revision
Correct as of Dec. 31st, 1924- No Revision
Correct as of Dec. 31st, 1923- No Revision
Correct as of Dec. 31st, 1922- No Revision
Correct as of Dec. 31st, 1921- No Revision
Correct as of Dec. 31st, 1920- No Revision
Correct as of Dec. 31st, 1919- No Revision
Correct as of Dec. 31st, 1918- No Revision
Correct as of Dec. 31st, 1917- No Revision
Correct as of Dec. 31st, 1916- No Revision
Correct as of Dec. 31st, 1915- No Revision
Correct as of Dec. 31st, 1914- No Revision
Correct as of Dec. 31st, 1913- No Revision
Correct as of Dec. 31st, 1912- No Revision
Correct as of Dec. 31st, 1911- No Revision
Correct as of Dec. 31st, 1910- No Revision
Correct as of Dec. 31st, 1909- No Revision
Correct as of Dec. 31st, 1908- No Revision
Correct as of Dec. 31st, 1907- No Revision
Correct as of Dec. 31st, 1906- No Revision
Correct as of Dec. 31st, 1905- No Revision
Correct as of Dec. 31st, 1904- No Revision
Correct as of Dec. 31st, 1903- No Revision
Correct as of Dec. 31st, 1902- No Revision
Correct as of Dec. 31st, 1901- No Revision
Correct as of Dec. 31st, 1900- No Revision

RIGHT OF WAY AND TRACK MAP
 PITTSBURGH, FORT WAYNE & CHICAGO RAILWAY
 OPERATED BY THE
PENNSYLVANIA COMPANY
 EASTERN DIVISION
 STATION 8172+15 TO STATION 8224+95
 SCALE: 1 IN. = 100 FT.
 OFFICE OF VALUATION ENGINEER
 PITTSBURGH, PA.

V.1
OHIO
107