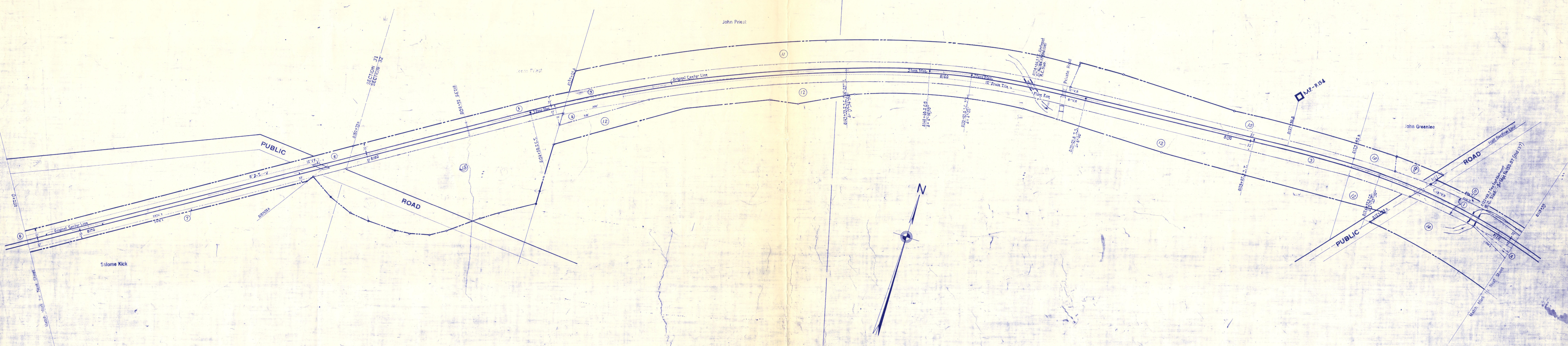


HOLMES COUNTY, OHIO
WASHINGTON TOWNSHIP
T. 20 N. R. 15 W.



CORRECT AS OF	REVISED	NO	YES
1867			
1868			
1869			
1870			
1871			
1872			
1873			
1874			
1875			
1876			
1877			
1878			
1879			
1880			
1881			
1882			
1883			
1884			
1885			
1886			
1887			
1888			
1889			
1890			
1891			
1892			
1893			
1894			
1895			
1896			
1897			
1898			
1899			
1900			

Correct as of Dec. 31st, 1935. No Revision
Correct as of Dec. 31st, 1934. No Revision
Correct as of Dec. 31st, 1933. Map Revised
Correct as of Dec. 31st, 1932. No Revision
Correct as of Dec. 31st, 1931. No Revision
Correct as of Dec. 31st, 1930. No Revision
Correct as of Dec. 31st, 1929. No Revision
Correct as of Dec. 31st, 1928. No Revision
Correct as of Dec. 31st, 1927. No Revision
Correct as of Dec. 31st, 1926. No Revision
Correct as of Dec. 31st, 1925. No Revision
Correct as of Dec. 31st, 1924. No Revision
Correct as of Dec. 31st, 1923. No Revision
Correct as of Dec. 31st, 1922. No Revision
Correct as of Dec. 31st, 1921. No Revision
Correct as of Dec. 31st, 1920. No Revision
Correct as of Dec. 31st, 1919. No Revision
Correct as of Dec. 31st, 1918. No Revision
Correct as of Dec. 31st, 1917. No Revision
Correct as of Dec. 31st, 1916. No Revision
Correct as of Dec. 31st, 1915. No Revision
Correct as of Dec. 31st, 1914. No Revision
Correct as of Dec. 31st, 1913. No Revision
Correct as of Dec. 31st, 1912. No Revision
Correct as of Dec. 31st, 1911. No Revision
Correct as of Dec. 31st, 1910. No Revision
Correct as of Dec. 31st, 1909. No Revision
Correct as of Dec. 31st, 1908. No Revision
Correct as of Dec. 31st, 1907. No Revision
Correct as of Dec. 31st, 1906. No Revision
Correct as of Dec. 31st, 1905. No Revision
Correct as of Dec. 31st, 1904. No Revision
Correct as of Dec. 31st, 1903. No Revision
Correct as of Dec. 31st, 1902. No Revision
Correct as of Dec. 31st, 1901. No Revision
Correct as of Dec. 31st, 1900. No Revision

Correct as of Dec. 31st, 1942. No Revision
Correct as of Dec. 31st, 1941. No Revision
Correct as of Dec. 31st, 1940. No Revision
Correct as of Dec. 31st, 1939. No Revision
Correct as of Dec. 31st, 1938. No Revision
Correct as of Dec. 31st, 1937. No Revision
Correct as of Dec. 31st, 1936. No Revision
Correct as of Dec. 31st, 1935. No Revision
Correct as of Dec. 31st, 1934. No Revision
Correct as of Dec. 31st, 1933. No Revision
Correct as of Dec. 31st, 1932. No Revision
Correct as of Dec. 31st, 1931. No Revision
Correct as of Dec. 31st, 1930. No Revision
Correct as of Dec. 31st, 1929. No Revision
Correct as of Dec. 31st, 1928. No Revision
Correct as of Dec. 31st, 1927. No Revision
Correct as of Dec. 31st, 1926. No Revision
Correct as of Dec. 31st, 1925. No Revision
Correct as of Dec. 31st, 1924. No Revision
Correct as of Dec. 31st, 1923. No Revision
Correct as of Dec. 31st, 1922. No Revision
Correct as of Dec. 31st, 1921. No Revision
Correct as of Dec. 31st, 1920. No Revision
Correct as of Dec. 31st, 1919. No Revision
Correct as of Dec. 31st, 1918. No Revision
Correct as of Dec. 31st, 1917. No Revision
Correct as of Dec. 31st, 1916. No Revision
Correct as of Dec. 31st, 1915. No Revision
Correct as of Dec. 31st, 1914. No Revision
Correct as of Dec. 31st, 1913. No Revision
Correct as of Dec. 31st, 1912. No Revision
Correct as of Dec. 31st, 1911. No Revision
Correct as of Dec. 31st, 1910. No Revision
Correct as of Dec. 31st, 1909. No Revision
Correct as of Dec. 31st, 1908. No Revision
Correct as of Dec. 31st, 1907. No Revision
Correct as of Dec. 31st, 1906. No Revision
Correct as of Dec. 31st, 1905. No Revision
Correct as of Dec. 31st, 1904. No Revision
Correct as of Dec. 31st, 1903. No Revision
Correct as of Dec. 31st, 1902. No Revision
Correct as of Dec. 31st, 1901. No Revision
Correct as of Dec. 31st, 1900. No Revision

Correct as of Dec. 31, 1929. No Revision
Correct as of Dec. 31, 1928. Map Revised
Correct as of Dec. 31, 1927. No Revision
Correct as of June 30, 1926. Map Revised
Correct as of June 30, 1925. No Revision
Correct as of June 30, 1924. No Revision
Correct as of June 30, 1923. No Revision
Correct as of June 30, 1922. No Revisions
Correct as of Dec. 31, 1921. No Revisions
Correct as of June 30, 1920. No Revisions
Correct as of Dec. 31, 1919. No Revisions
Correct as of Dec. 31, 1918. No Revisions
Correct as of Dec. 31, 1917. No Revisions
Correct as of Dec. 31, 1916. No Revisions
Correct as of Dec. 31, 1915. No Revisions
Correct as of Dec. 31, 1914. No Revisions
Correct as of Dec. 31, 1913. No Revisions
Correct as of Dec. 31, 1912. No Revisions
Correct as of Dec. 31, 1911. No Revisions
Correct as of Dec. 31, 1910. No Revisions
Correct as of Dec. 31, 1909. No Revisions
Correct as of Dec. 31, 1908. No Revisions
Correct as of Dec. 31, 1907. No Revisions
Correct as of Dec. 31, 1906. No Revisions
Correct as of Dec. 31, 1905. No Revisions
Correct as of Dec. 31, 1904. No Revisions
Correct as of Dec. 31, 1903. No Revisions
Correct as of Dec. 31, 1902. No Revisions
Correct as of Dec. 31, 1901. No Revisions
Correct as of Dec. 31, 1900. No Revisions

Sheet No. 106 V.1 Ohio of Pittsburgh, Fort Wayne and Chicago Railway
from Survey Station 8119+35 to Survey Station 8172+15
Chief Draftsman

RIGHT OF WAY AND TRACK MAP
PITTSBURGH, FORT WAYNE & CHICAGO RAILWAY
OPERATED BY THE
PENNSYLVANIA COMPANY
EASTERN DIVISION
STATION 8119+35 TO STATION 8172+15
SCALE: 1 IN = 2100 FT. JUNE 30, 1916
OFFICE OF VALUATION ENGINEER
PITTSBURGH, PA.