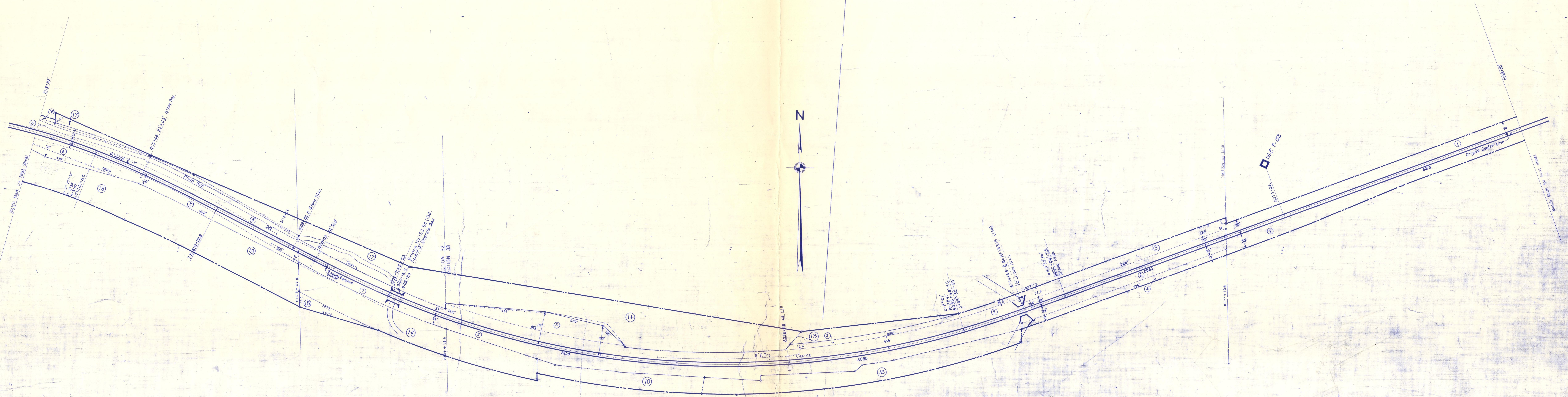


HOLMES COUNTY, OHIO
WASHINGTON TOWNSHIP
T. 20 N., R. 15 W.



CORRECT	REVISED	
AS OF	YES	NO
1929		
1928		
1927		
1926		
1925		
1924		
1923		
1922		
1921		
1920		
1919		
1918		
1917		
1916		

Correct as of Dec. 31st, 1955: No Revision	Correct as of Dec. 31st, 1942: No Revision
Correct as of Dec. 31st, 1954: No Revision	Correct as of Dec. 31st, 1941: No Revision
Correct as of Dec. 31st, 1953: Map Revised	Correct as of Dec. 31st, 1940: No Revision
Correct as of Dec. 31st, 1952: No Revision	Correct as of Dec. 31st, 1939: No Revision
Correct as of Dec. 31st, 1951: No Revision	Correct as of Dec. 31st, 1938: No Revision
Correct as of Dec. 31st, 1950: Map Revised	Correct as of Dec. 31st, 1937: No Revision
Correct as of Dec. 31st, 1949: No Revision	Correct as of Dec. 31st, 1936: No Revision
Correct as of Dec. 31st, 1948: No Revision	Correct as of Dec. 31st, 1935: No Revision
Correct as of Dec. 31st, 1947: No Revision	Correct as of Dec. 31st, 1934: No Revision
Correct as of Dec. 31st, 1946: Map Revised	Correct as of Dec. 31st, 1933: No Revision
Correct as of Dec. 31st, 1945: No Revision	Correct as of Dec. 31st, 1932: No Revision
Correct as of Dec. 31st, 1944: No Revision	Correct as of Dec. 31st, 1931: No Revision
Correct as of Dec. 31st, 1943: No Revision	Correct as of Dec. 31st, 1930: No Revision

Sheet No. 105 V.1 Ohio of Pittsburgh, Fort Wayne and Chicago Railway
from Survey Station 8066+55 to Survey Station 8119+35

Correct as of Dec. 31st 1929: No Revision	Correct as of Dec. 31st 1929: No Revision
Correct as of Dec. 31st 1928: No Revision	Correct as of Dec. 31st 1928: No Revision
Correct as of Dec. 31 1927: No Revision	Correct as of Dec. 31 1927: No Revision
Correct as of June 30 1927: No Revision	Correct as of June 30 1927: No Revision
Correct as of June 30 1926: No Revision	Correct as of June 30 1926: No Revision
Correct as of June 30 1925: No Revision	Correct as of June 30 1925: No Revision
Correct as of June 30 1924: No Revision	Correct as of June 30 1924: No Revision
Correct as of June 30 1923: No Revision	Correct as of June 30 1923: No Revision
Correct as of June 30 1922: No Revision	Correct as of June 30 1922: No Revision
Correct as of June 30 1921: No Revision	Correct as of June 30 1921: No Revision
Correct as of June 30 1920: No Revision	Correct as of June 30 1920: No Revision
Correct as of June 30 1919: No Revision	Correct as of June 30 1919: No Revision
Correct as of June 30 1918: No Revision	Correct as of June 30 1918: No Revision
Correct as of June 30 1917: No Revision	Correct as of June 30 1917: No Revision

RIGHT OF WAY AND TRACK MAP
PITTSBURGH, FORT WAYNE & CHICAGO RAILWAY
OPERATED BY THE
PENNSYLVANIA COMPANY
EASTERN DIVISION
STATION 8066+55 TO STATION 8119+35
SCALE: 1 IN. = 100 FT. JUNE 30, 1916
OFFICE OF VALUATION ENGINEER
PITTSBURGH, PA.