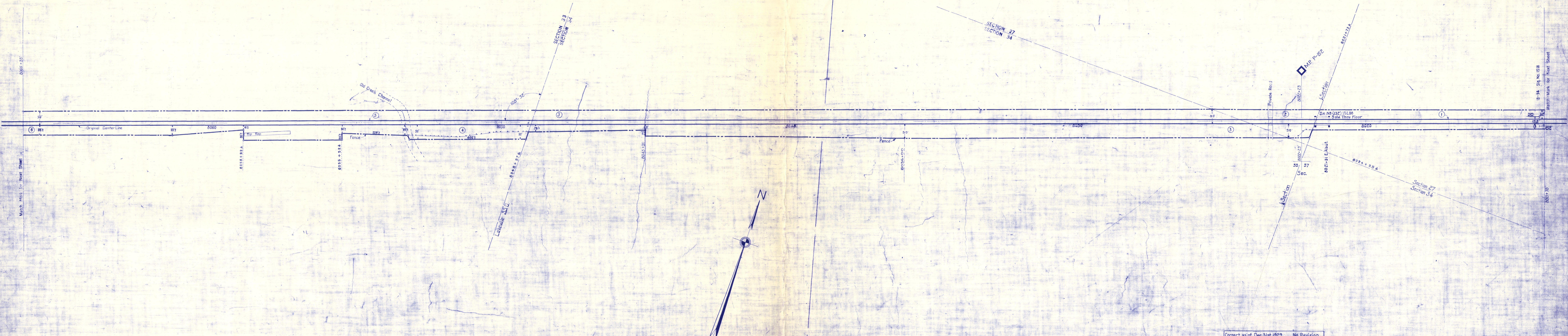


HOLMES COUNTY, OHIO
WASHINGTON TOWNSHIP
T. 20 N., R. 15 W.



AS OF	REVISION	NO.
DEC. 31	YEAR	
1907		
1908		
1909		
1910		
1911		
1912		
1913		
1914		
1915		
1916		
1917		
1918		
1919		
1920		
1921		
1922		
1923		
1924		
1925		
1926		
1927		
1928		
1929		
1930		
1931		
1932		
1933		
1934		
1935		
1936		
1937		
1938		
1939		
1940		
1941		
1942		
1943		
1944		
1945		
1946		
1947		
1948		
1949		
1950		
1951		
1952		
1953		
1954		
1955		

Correct as of Dec. 31st, 1955- No Revision
Correct as of Dec. 31st, 1954- No Revision
Correct as of Dec. 31st, 1953- No Revision
Correct as of Dec. 31st, 1952- No Revision
Correct as of Dec. 31st, 1951- No Revision
Correct as of Dec. 31st, 1950- No Revision
Correct as of Dec. 31st, 1949- No Revision
Correct as of Dec. 31st, 1948- No Revision
Correct as of Dec. 31st, 1947- No Revision
Correct as of Dec. 31st, 1946- No Revision
Correct as of Dec. 31st, 1945- No Revision
Correct as of Dec. 31st, 1944- No Revision
Correct as of Dec. 31st, 1943- No Revision

Correct as of Dec. 31st, 1942- No Revision
Correct as of Dec. 31st, 1941- No Revision
Correct as of Dec. 31st, 1940- No Revision
Correct as of Dec. 31st, 1939- No Revision
Correct as of Dec. 31st, 1938- No Revision
Correct as of Dec. 31st, 1937- No Revision
Correct as of Dec. 31st, 1936- No Revision
Correct as of Dec. 31st, 1935- No Revision
Correct as of Dec. 31st, 1934- No Revision
Correct as of Dec. 31st, 1933- No Revision
Correct as of Dec. 31st, 1932- No Revision
Correct as of Dec. 31st, 1931- No Revision
Correct as of Dec. 31st, 1930- No Revision

Sheet No. 104 V.1 Ohio, of Pittsburgh, Fort Wayne and Chicago Railway
from Survey Station 8013+75 to Survey Station 8066+55

Correct as of Dec. 31st, 1929- No Revision
Correct as of Dec. 31st, 1928- No Revision
Correct as of Dec. 31st, 1927- No Revision
Correct as of June 30, 1926- No Revision
Correct as of June 30, 1925- No Revision
Correct as of June 30, 1924- No Revision
Correct as of June 30, 1923- No Revision
Correct as of June 30, 1922- No Revision
Correct as of June 30, 1921- No Revision
Correct as of June 30, 1920- No Revision
Correct as of June 30, 1919- No Revision
Correct as of June 30, 1918- No Revision
Correct as of June 30, 1917- No Revision

RIGHT OF WAY AND TRACK MAP
PITTSBURGH, FORT WAYNE & CHICAGO RAILWAY
OPERATED BY THE
PENNSYLVANIA COMPANY
EASTERN DIVISION
STATION 8013+75 TO STATION 8066+55
SCALE: 1 IN. = 100 FT. JUNE 30, 1918
OFFICE OF VALUATION ENGINEER
PITTSBURGH, PA.