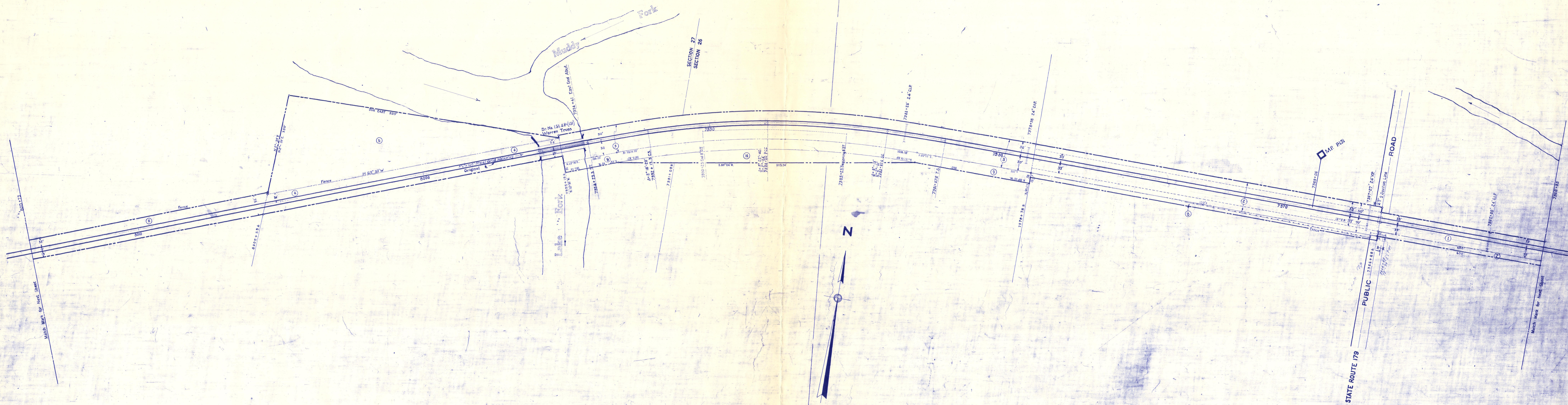


HOLMES COUNTY, OHIO  
WASHINGTON TOWNSHIP  
T. 20 N., R. 15 W.



SCHEDULE OF SIDINGS AND CROSSOVERS

Side Number	Location	Class	R.R. Co.	Private	Total	Remarks
						See map No 102

CORRECTED AS OF	REVISED	YES	NO
1927			
1928			
1929			
1930			
1931			
1932			
1933			
1934			
1935			
1936			
1937			
1938			
1939			
1940			
1941			
1942			
1943			
1944			
1945			
1946			
1947			
1948			
1949			
1950			
1951			
1952			
1953			
1954			
1955			
1956			
1957			
1958			
1959			
1960			
1961			
1962			
1963			
1964			
1965			
1966			
1967			
1968			
1969			
1970			
1971			
1972			
1973			
1974			
1975			
1976			
1977			
1978			
1979			
1980			
1981			
1982			
1983			
1984			
1985			
1986			
1987			
1988			
1989			
1990			

Correct as of Dec. 31st, 1955- No Revision	Correct as of Dec. 31st, 1949- Map Revised
Correct as of Dec. 31st, 1954- No Revision	Correct as of Dec. 31st, 1911- No Revision
Correct as of Dec. 31st, 1953- Map Revised	Correct as of Dec. 31st, 1910- No Revision
Correct as of Dec. 31st, 1952- No Revision	Correct as of Dec. 31st, 1909- No Revision
Correct as of Dec. 31st, 1951- No Revision	Correct as of Dec. 31st, 1908- No Revision
Correct as of Dec. 31st, 1950- No Revision	Correct as of Dec. 31st, 1907- No Revision
Correct as of Dec. 31st, 1949- No Revision	Correct as of Dec. 31st, 1906- No Revision
Correct as of Dec. 31st, 1948- No Revision	Correct as of Dec. 31st, 1905- No Revision
Correct as of Dec. 31st, 1947- No Revision	Correct as of Dec. 31st, 1904- Map Revised
Correct as of Dec. 31st, 1946- No Revision	Correct as of Dec. 31st, 1903- No Revision
Correct as of Dec. 31st, 1945- No Revision	Correct as of Dec. 31st, 1902- Map Revised
Correct as of Dec. 31st, 1944- Map Revised	Correct as of Dec. 31st, 1901- Map Revised
Correct as of Dec. 31st, 1943- Map Revised	Correct as of Dec. 31st, 1900- No Revision

Sheet No. 103 V.1 Ohio, of Pittsburgh, Fort Wayne and Chicago Railway  
from Survey Station 7950+95 to Survey Station 8013+75  
Chief Draftsman

Correct as of Dec. 31, 1929	No Revision
Correct as of Dec. 31, 1928	No Revision
Correct as of Dec. 31, 1927	No Revision
Correct as of Dec. 31, 1926	Map Revised
Correct as of Dec. 31, 1925	No Revision
Correct as of Dec. 31, 1924	No Revision
Correct as of Dec. 31, 1923	No Revision
Correct as of Dec. 31, 1922	No Revision
Correct as of Dec. 31, 1921	No Revision
Correct as of Dec. 31, 1920	No Revision
Correct as of Dec. 31, 1919	No Revision
Correct as of Dec. 31, 1918	No Revision
Correct as of Dec. 31, 1917	No Revision
Correct as of Dec. 31, 1916	No Revision
Correct as of Dec. 31, 1915	No Revision
Correct as of Dec. 31, 1914	No Revision
Correct as of Dec. 31, 1913	No Revision
Correct as of Dec. 31, 1912	No Revision
Correct as of Dec. 31, 1911	No Revision
Correct as of Dec. 31, 1910	No Revision
Correct as of Dec. 31, 1909	No Revision
Correct as of Dec. 31, 1908	No Revision
Correct as of Dec. 31, 1907	No Revision
Correct as of Dec. 31, 1906	No Revision
Correct as of Dec. 31, 1905	No Revision
Correct as of Dec. 31, 1904	No Revision
Correct as of Dec. 31, 1903	No Revision
Correct as of Dec. 31, 1902	No Revision
Correct as of Dec. 31, 1901	No Revision
Correct as of Dec. 31, 1900	No Revision

RIGHT OF WAY AND TRACK MAP  
PITTSBURGH, FORT WAYNE & CHICAGO RAILWAY  
OPERATED BY THE  
PENNSYLVANIA COMPANY  
EASTERN DIVISION  
STATION 7960+95 TO STATION 8013+75  
SCALE: 1 IN. = 100 FT. JUNE 30, 1916  
OFFICE OF VALUATION ENGINEER  
PITTSBURGH, PA.