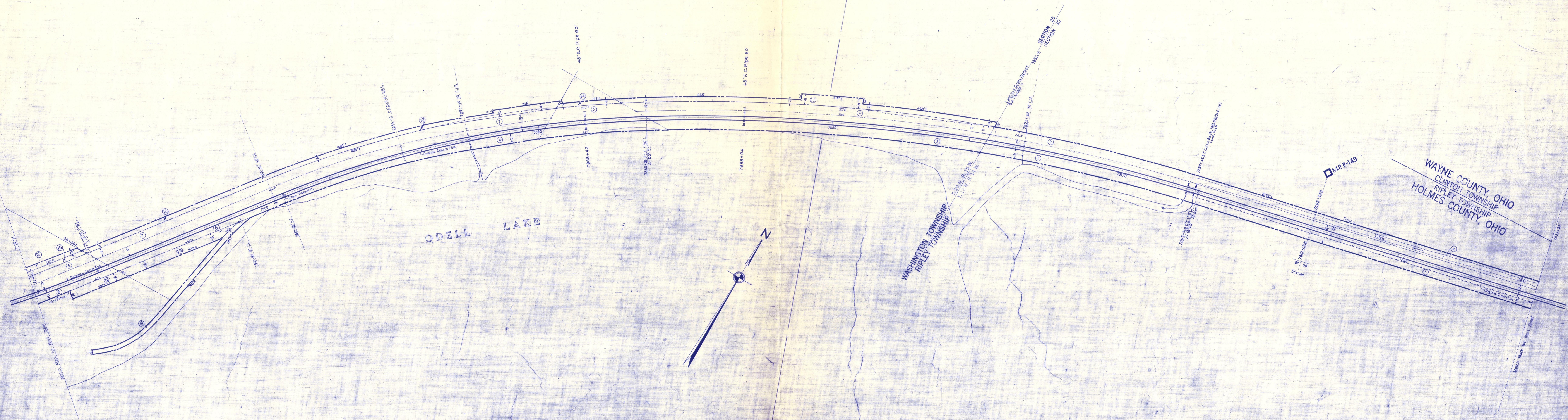


HOLMES COUNTY, OHIO



SCHEDULE OF SIDINGS AND CROSSOVERS

Dist. from Newcom	LOCATION	CLASS	LENGTH	TOTAL	REMARKS
ft.			ft.	ft.	
8		P	5078	5078	Lengthened 3-7-24
		B	898	898	

CORRECTED	REVISION	YER	NO
✓		1929	
✓		1928	
✓		1927	
✓		1926	
✓		1925	
✓		1924	
✓		1923	
✓		1922	
✓		1921	
✓		1920	
✓		1919	
✓		1918	
✓		1917	
✓		1916	
✓		1915	
✓		1914	
✓		1913	
✓		1912	
✓		1911	
✓		1910	
✓		1909	
✓		1908	
✓		1907	
✓		1906	
✓		1905	
✓		1904	
✓		1903	
✓		1902	
✓		1901	
✓		1900	

Correct as of Dec. 31st, 1935- No Revision	Correct as of Dec. 31st, 1947- No Revision
Correct as of Dec. 31st, 1934- No Revision	Correct as of Dec. 31st, 1946- No Revision
Correct as of Dec. 31st, 1933- No Revision	Correct as of Dec. 31st, 1945- No Revision
Correct as of Dec. 31st, 1932- No Revision	Correct as of Dec. 31st, 1944- No Revision
Correct as of Dec. 31st, 1931- No Revision	Correct as of Dec. 31st, 1943- No Revision
Correct as of Dec. 31st, 1930- No Revision	Correct as of Dec. 31st, 1942- No Revision
Correct as of Dec. 31st, 1929- No Revision	Correct as of Dec. 31st, 1941- No Revision
Correct as of Dec. 31st, 1928- No Revision	Correct as of Dec. 31st, 1940- No Revision
Correct as of Dec. 31st, 1927- No Revision	Correct as of Dec. 31st, 1939- No Revision
Correct as of Dec. 31st, 1926- No Revision	Correct as of Dec. 31st, 1938- No Revision
Correct as of Dec. 31st, 1925- No Revision	Correct as of Dec. 31st, 1937- No Revision
Correct as of Dec. 31st, 1924- No Revision	Correct as of Dec. 31st, 1936- No Revision
Correct as of Dec. 31st, 1923- No Revision	Correct as of Dec. 31st, 1935- No Revision
Correct as of Dec. 31st, 1922- No Revision	Correct as of Dec. 31st, 1934- No Revision
Correct as of Dec. 31st, 1921- No Revision	Correct as of Dec. 31st, 1933- No Revision
Correct as of Dec. 31st, 1920- No Revision	Correct as of Dec. 31st, 1932- No Revision
Correct as of Dec. 31st, 1919- No Revision	Correct as of Dec. 31st, 1931- No Revision
Correct as of Dec. 31st, 1918- No Revision	Correct as of Dec. 31st, 1930- No Revision
Correct as of Dec. 31st, 1917- No Revision	Correct as of Dec. 31st, 1929- No Revision
Correct as of Dec. 31st, 1916- No Revision	Correct as of Dec. 31st, 1928- No Revision
Correct as of Dec. 31st, 1915- No Revision	Correct as of Dec. 31st, 1927- No Revision
Correct as of Dec. 31st, 1914- No Revision	Correct as of Dec. 31st, 1926- No Revision
Correct as of Dec. 31st, 1913- No Revision	Correct as of Dec. 31st, 1925- No Revision
Correct as of Dec. 31st, 1912- No Revision	Correct as of Dec. 31st, 1924- No Revision
Correct as of Dec. 31st, 1911- No Revision	Correct as of Dec. 31st, 1923- No Revision
Correct as of Dec. 31st, 1910- No Revision	Correct as of Dec. 31st, 1922- No Revision
Correct as of Dec. 31st, 1909- No Revision	Correct as of Dec. 31st, 1921- No Revision
Correct as of Dec. 31st, 1908- No Revision	Correct as of Dec. 31st, 1920- No Revision
Correct as of Dec. 31st, 1907- No Revision	Correct as of Dec. 31st, 1919- No Revision
Correct as of Dec. 31st, 1906- No Revision	Correct as of Dec. 31st, 1918- No Revision
Correct as of Dec. 31st, 1905- No Revision	Correct as of Dec. 31st, 1917- No Revision
Correct as of Dec. 31st, 1904- No Revision	Correct as of Dec. 31st, 1916- No Revision
Correct as of Dec. 31st, 1903- No Revision	Correct as of Dec. 31st, 1915- No Revision
Correct as of Dec. 31st, 1902- No Revision	Correct as of Dec. 31st, 1914- No Revision
Correct as of Dec. 31st, 1901- No Revision	Correct as of Dec. 31st, 1913- No Revision
Correct as of Dec. 31st, 1900- No Revision	Correct as of Dec. 31st, 1912- No Revision

Correct as of Dec. 31, 1929	No Revision
Correct as of Dec. 31, 1928	Map Revised
Correct as of Dec. 31, 1927	No Revision
Correct as of June 30, 1927	No Revision
Correct as of June 30, 1926	Map Revised
Correct as of June 30, 1925	No Revision
Correct as of June 30, 1924	Map Revised
Correct as of June 30, 1923	No Revision
Correct as of June 30, 1922	No Revision
Correct as of June 30, 1921	No Revision
Correct as of June 30, 1920	No Revision
Correct as of June 30, 1919	No Revision
Correct as of June 30, 1918	No Revision
Correct as of June 30, 1917	No Revision
Correct as of June 30, 1916	No Revision
Correct as of June 30, 1915	No Revision
Correct as of June 30, 1914	No Revision
Correct as of June 30, 1913	No Revision
Correct as of June 30, 1912	No Revision
Correct as of June 30, 1911	No Revision
Correct as of June 30, 1910	No Revision
Correct as of June 30, 1909	No Revision
Correct as of June 30, 1908	No Revision
Correct as of June 30, 1907	No Revision
Correct as of June 30, 1906	No Revision
Correct as of June 30, 1905	No Revision
Correct as of June 30, 1904	No Revision
Correct as of June 30, 1903	No Revision
Correct as of June 30, 1902	No Revision
Correct as of June 30, 1901	No Revision
Correct as of June 30, 1900	No Revision

Sheet No. 161 V.1 Ohio, of Pittsburgh, Fort Wayne and Chicago Railway from Survey Station 7657+00 to Survey Station 7908+15

RIGHT OF WAY AND TRACK MAP
 PITTSBURGH, FORT WAYNE & CHICAGO RAILWAY
 OPERATED BY THE
PENNSYLVANIA COMPANY
 EASTERN DIVISION
 STATION 7657+15 TO STATION 7908+15
 SCALE: 1" = 100 FT. JUNE 30, 1916
 OFFICE OF VALUATION ENGINEER
 PITTSBURGH, PA.