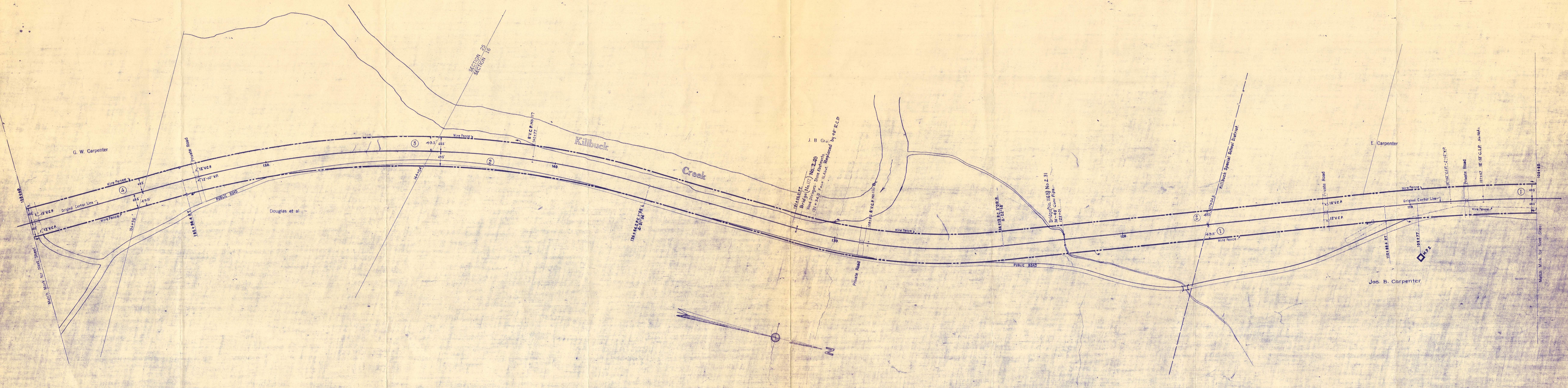


HOLMES COUNTY, OHIO  
KILLBUCK TOWNSHIP  
T. 8 N., R. 7 W.



SCHEDULE OF SIDINGS AND CROSSOVERS

Side Track Number	Location	Class	R.R. Co.	Private	Total	Remarks
16	Killbuck S. & D.	B				Removed 6-30-19

CORRECT AS OF DEC. 31	REVISED
YES	NO
1927	
1928	
1929	
1930	
1931	
1932	
1933	
1934	
1935	
1936	
1937	
1938	
1939	
1940	
1941	
1942	
1943	
1944	
1945	
1946	
1947	
1948	
1949	
1950	
1951	
1952	
1953	
1954	
1955	

Correct as of Dec. 31st, 1955- No Revision
Correct as of Dec. 31st, 1954- No Revision
Correct as of Dec. 31st, 1953- No Revision
Correct as of Dec. 31st, 1952- No Revision
Correct as of Dec. 31st, 1951- No Revision
Correct as of Dec. 31st, 1950- No Revision
Correct as of Dec. 31st, 1949- No Revision
Correct as of Dec. 31st, 1948- No Revision
Correct as of Dec. 31st, 1947- No Revision
Correct as of Dec. 31st, 1946- No Revision
Correct as of Dec. 31st, 1945- No Revision
Correct as of Dec. 31st, 1944- No Revision
Correct as of Dec. 31st, 1943- No Revision

Correct as of Dec. 31st, 1942- No Revision
Correct as of Dec. 31st, 1941- No Revision
Correct as of Dec. 31st, 1940- No Revision
Correct as of Dec. 31st, 1939- No Revision
Correct as of Dec. 31st, 1938- No Revision
Correct as of Dec. 31st, 1937- No Revision
Correct as of Dec. 31st, 1936- No Revision
Correct as of Dec. 31st, 1935- No Revision
Correct as of Dec. 31st, 1934- No Revision
Correct as of Dec. 31st, 1933- No Revision
Correct as of Dec. 31st, 1932- No Revision
Correct as of Dec. 31st, 1931- No Revision
Correct as of Dec. 31st, 1930- No Revision

Correct as of Dec. 31st 1929 No Revision
Correct as of Dec. 31st 1928 No Revision
Correct as of Dec. 31 1927 Map Revised
Correct as of June 30, 1927 No Revision
Correct as of June 30, 1926 Map Revised
Correct as of June 30, 1925 No Revision
Correct as of June 30th 1924 No Revision
Correct as of June 30th 1923 No Revision
Correct as of June 30th 1922 No Revision
Correct as of June 30th 1921 No Revision
Correct as of June 30th 1920 No Revision
Correct as of June 30th 1919 No Revision
Correct as of June 30th 1918 Map Revised
Correct as of June 30th 1917 No Revision

Sheet No. 3719, Ohio of Cleveland, Akron and Cincinnati Railway from Survey Section 151440 to Survey Station 18140

**CONNECTING RAILWAY**  
FORMERLY  
**RIGHT OF WAY AND TRACK MAP**  
**CLEVELAND, AKRON AND CINCINNATI RAILWAY**  
OPERATED BY THE  
**PENNSYLVANIA COMPANY**  
**AKRON DIVISION - DRESDEN BRANCH**  
STATION 105+60 TO STATION 158+40  
SCALE: 1 IN. = 100 FT. JUNE 30, 1916  
OFFICE OF VALUATION ENGINEER  
PITTSBURGH, PA.

ULSLAND, AKRON & CINCINNATI RAILWAY CO. MERGED WITH OTHER CORPORATIONS TO FORM THE PENNSYLVANIA, OHIO & DETROIT RAILROAD COMPANY JULY 1, 1924

V10b OHIO 3  
FORMERLY V21b OHIO 3