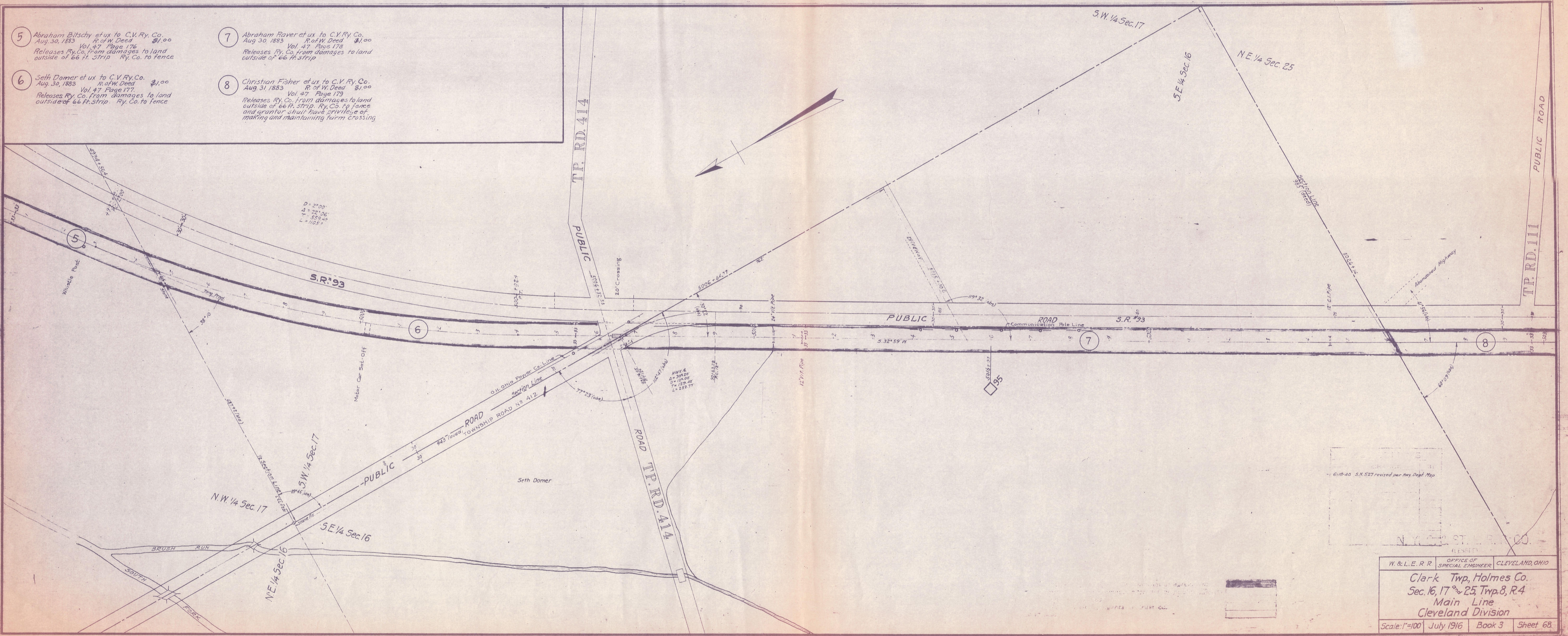


5 Abraham Bitsch et ux to C.V. Ry. Co.
 R. of W. Deed \$1.00
 Aug. 30, 1883 Vol. 47 Page 176
 Releases Ry. Co. from damages to land
 outside of 66 ft. strip Ry. Co. to fence

7 Abraham Faver et ux to C.V. Ry. Co.
 R. of W. Deed \$1.00
 Aug. 30, 1883 Vol. 47 Page 178
 Releases Ry. Co. from damages to land
 outside of 66 ft. strip

6 Seth Damer et ux to C.V. Ry. Co.
 R. of W. Deed \$1.00
 Aug. 30, 1883 Vol. 47 Page 177
 Releases Ry. Co. from damages to land
 outside of 66 ft. strip Ry. Co. to fence

8 Christian Fisher et ux to C.V. Ry. Co.
 R. of W. Deed \$1.00
 Aug. 31, 1883 Vol. 47 Page 179
 Releases Ry. Co. from damages to land
 outside of 66 ft. strip. Ry. Co. to fence
 and grantor shall have privilege of
 making and maintaining turn crossing



6-18-40 S.M. 527 revised per Hwy. Dept. Map

N.Y. C. ST. R. CO.
 (LESSEE)

W. & L. E. R. R.	OFFICE OF SPECIAL ENGINEER	CLEVELAND, OHIO
Clark Twp, Holmes Co. Sec. 16, 17 & 25, Twp. 8, R. 4 Main Line Cleveland Division		
Scale: 1"=100'	July 1916	Book 3 Sheet 68

Revised Apr. 1933
 Revised April 3, 1932