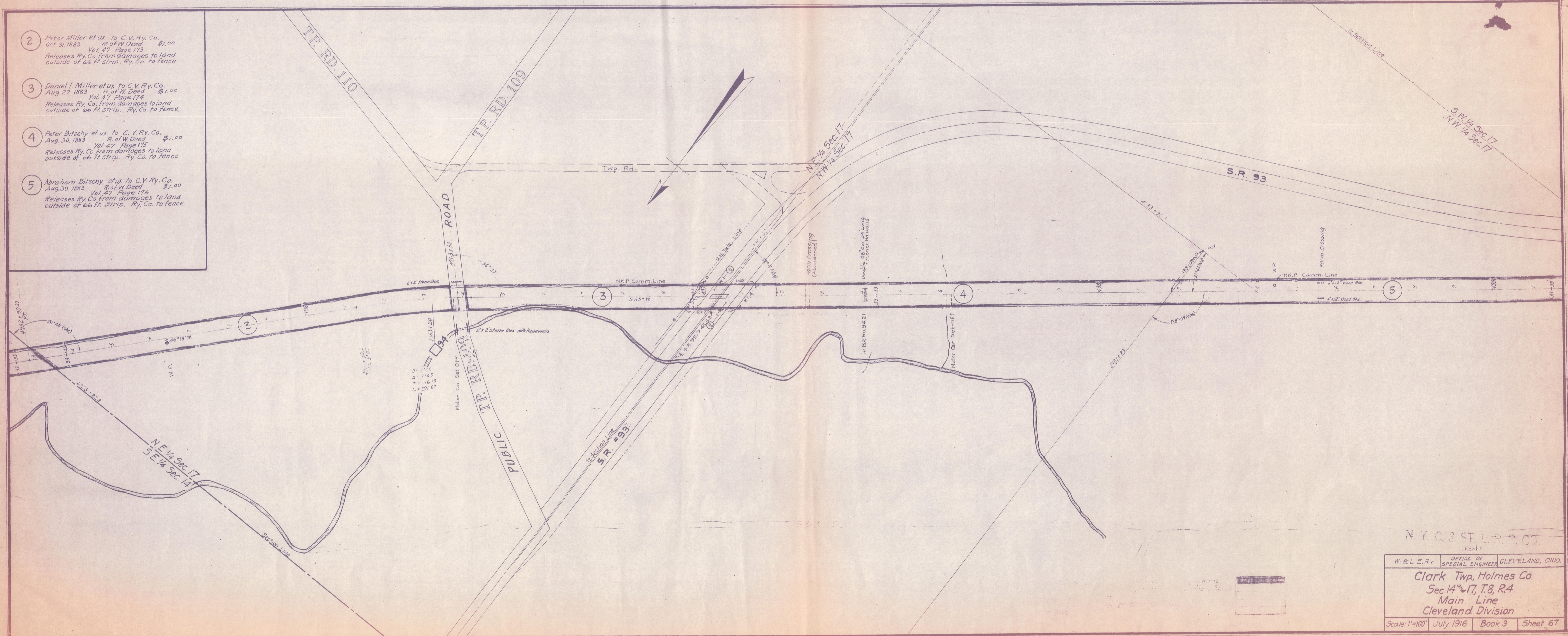


- 2 Peter Miller et ux to C.V. Ry. Co.
Oct. 31, 1883 R. of W. Deed \$1.00
Vol. 47 Page 173
Releases Ry. Co. from damages to land
outside of 66 ft. strip. Ry. Co. to fence
- 3 Daniel I. Miller et ux to C.V. Ry. Co.
Aug. 22, 1883 R. of W. Deed \$1.00
Vol. 47 Page 174
Releases Ry. Co. from damages to land
outside of 66 ft. strip. Ry. Co. to fence.
- 4 Peter Bitschy et ux to C.V. Ry. Co.
Aug. 30, 1883 R. of W. Deed \$1.00
Vol. 47 Page 175
Releases Ry. Co. from damages to land
outside of 66 ft. strip. Ry. Co. to fence
- 5 Abraham Bitschy et ux to C.V. Ry. Co.
Aug. 30, 1883 R. of W. Deed \$1.00
Vol. 47 Page 176
Releases Ry. Co. from damages to land
outside of 66 ft. strip. Ry. Co. to fence



N.Y.C. & ST. L.R. CO.
LESSEE

W. & L. E. RY.	OFFICE OF SPECIAL ENGINEER	CLEVELAND, OHIO.
Clark Twp, Holmes Co. Sec. 14, 17, T. 8, R. 4 Main Line Cleveland Division		
Scale: 1"=100'	July 1916	Book 3 Sheet 67

Revised Apr. 1933
February 19, 1933