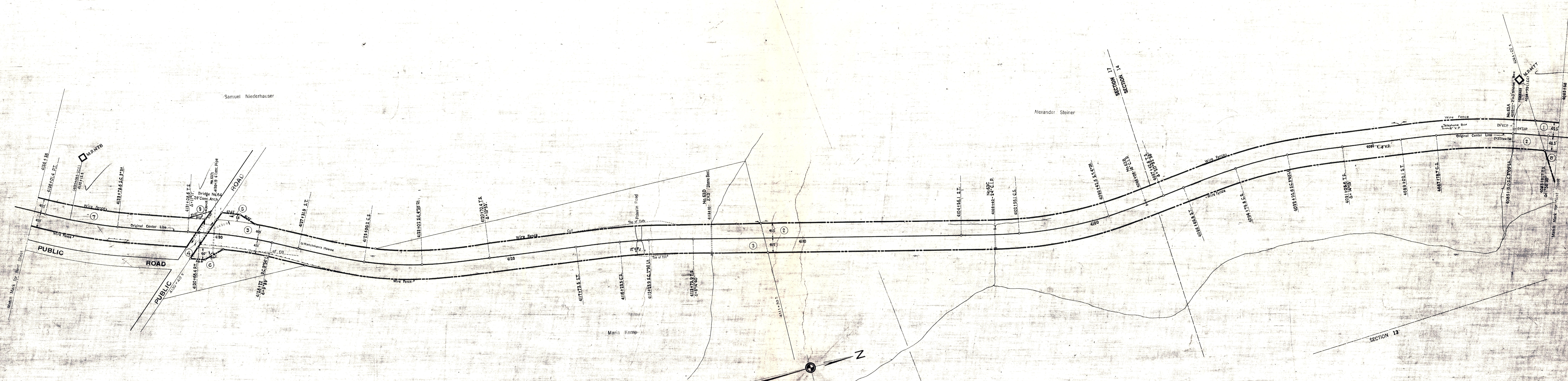


HOLMES COUNTY, OHIO
RICHLAND TOWNSHIP



SCHEDULE OF SIDINGS AND CROSSOVERS

Side Track Number	Location	Class	R.R.Co.	Private	Total	Remarks
5	Richland Twp.	P.				See Map No. 50.



AS CORRECTED	REVISION	DATE	REVISION
1887			
1888			
1889			
1890			
1891			
1892			
1893			
1894			
1895			
1896			

Sheet No. 51 V. 21 Ohio of Cleveland, Akron and Cincinnati Railway
from Survey Station 4083+58 to Survey Station 4136+38
Chief Draftsman

CONNECTING RAILWAY
FORMERLY
RIGHT OF WAY AND TRACK MAP
CLEVELAND, AKRON AND CINCINNATI RAILWAY
OPERATED BY THE
PENNSYLVANIA COMPANY
AKRON DIVISION
STATION 4083+58 TO STATION 4136+38
SCALE: 1 IN. = 100 FT. JUNE 26, 1910
OFFICE OF VALUATION ENGINEER
PITTSBURGH, PA.
CLEVELAND, AKRON & CINCINNATI RAILWAY CO. MERGED
WITH OTHER CORPORATIONS TO FORM THE PENNSYLVANIA
OHIO & WESTERN RAILROAD COMPANY JULY 1, 1924

