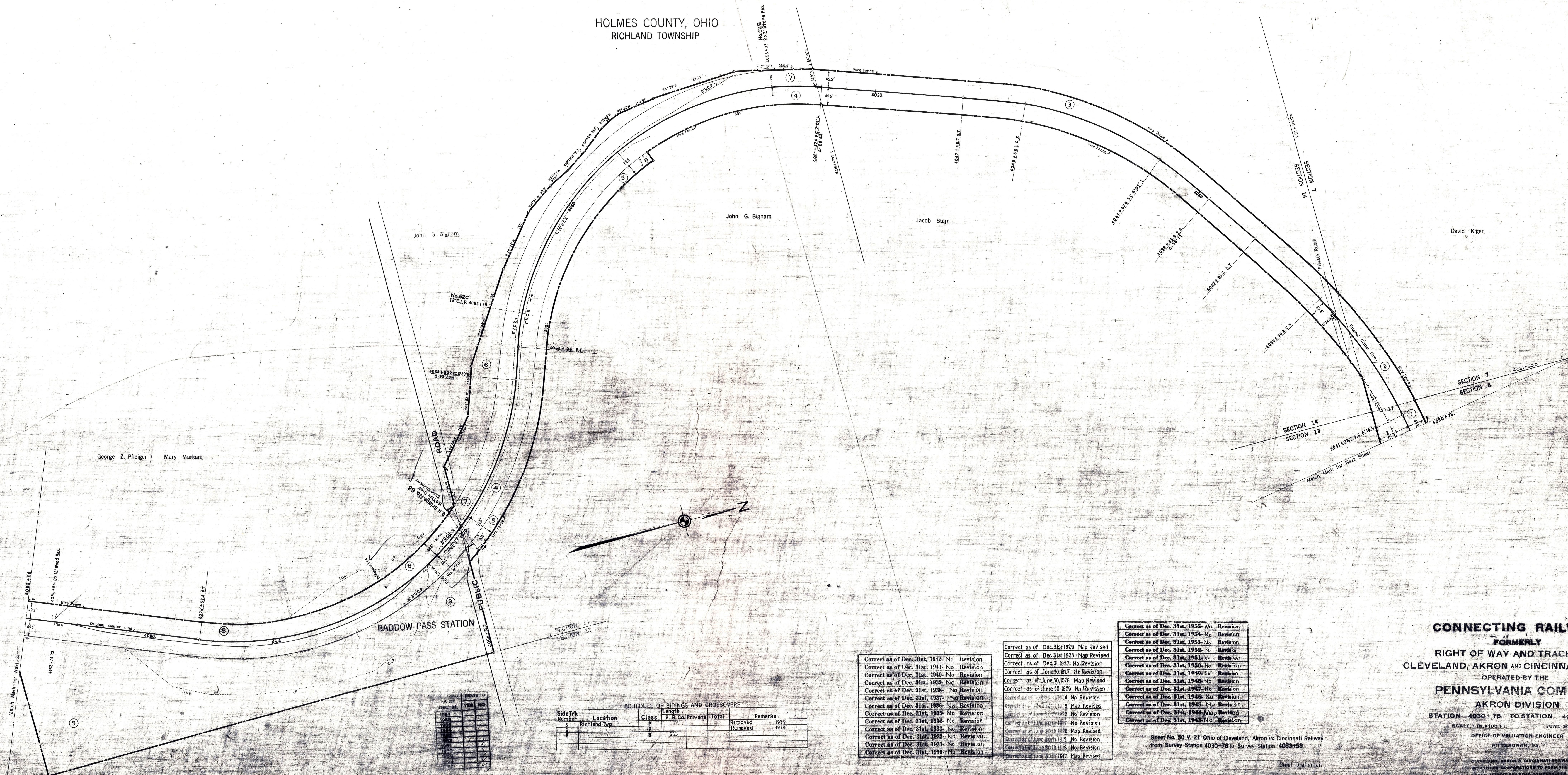


HOLMES COUNTY, OHIO  
RICHLAND TOWNSHIP



V10  
OHIO  
50

Year	Removed	Yes	No
1927			
1928			
1929			
1930			
1931			
1932			
1933			
1934			
1935			
1936			
1937			
1938			
1939			
1940			
1941			
1942			

SCHEDULE OF SIDINGS AND CROSSOVERS

Side Trk Number	Location	Class	Length		Remarks
			P. R. Co.	Private	
5	Richland Twp.	P			Removed 1929
6		P			Removed 1929
8		P			

Correct as of Dec. 31st, 1942- No Revision  
 Correct as of Dec. 31st, 1941- No Revision  
 Correct as of Dec. 31st, 1940- No Revision  
 Correct as of Dec. 31st, 1939- No Revision  
 Correct as of Dec. 31st, 1938- No Revision  
 Correct as of Dec. 31st, 1937- No Revision  
 Correct as of Dec. 31st, 1936- No Revision  
 Correct as of Dec. 31st, 1935- No Revision  
 Correct as of Dec. 31st, 1934- No Revision  
 Correct as of Dec. 31st, 1933- No Revision  
 Correct as of Dec. 31st, 1932- No Revision  
 Correct as of Dec. 31st, 1931- No Revision  
 Correct as of Dec. 31st, 1930- No Revision

Correct as of Dec. 31st, 1929- Map Revised  
 Correct as of Dec. 31st, 1928- Map Revised  
 Correct as of Dec. 31st, 1927- No Revision  
 Correct as of Dec. 31st, 1926- No Revision  
 Correct as of Dec. 31st, 1925- No Revision  
 Correct as of Dec. 31st, 1924- No Revision  
 Correct as of Dec. 31st, 1923- No Revision  
 Correct as of Dec. 31st, 1922- No Revision  
 Correct as of Dec. 31st, 1921- No Revision  
 Correct as of Dec. 31st, 1920- No Revision  
 Correct as of Dec. 31st, 1919- No Revision  
 Correct as of Dec. 31st, 1918- No Revision  
 Correct as of Dec. 31st, 1917- No Revision

Correct as of Dec. 31st, 1955- No Revision  
 Correct as of Dec. 31st, 1954- No Revision  
 Correct as of Dec. 31st, 1953- No Revision  
 Correct as of Dec. 31st, 1952- No Revision  
 Correct as of Dec. 31st, 1951- No Revision  
 Correct as of Dec. 31st, 1950- No Revision  
 Correct as of Dec. 31st, 1949- No Revision  
 Correct as of Dec. 31st, 1948- No Revision  
 Correct as of Dec. 31st, 1947- No Revision  
 Correct as of Dec. 31st, 1946- No Revision  
 Correct as of Dec. 31st, 1945- No Revision  
 Correct as of Dec. 31st, 1944- Map Revised  
 Correct as of Dec. 31st, 1943- No Revision

Sheet No. 50 V. 21 Ohio of Cleveland, Akron and Cincinnati Railway  
 from Survey Station 4030+78 to Survey Station 4083+58

**CONNECTING RAILWAY**  
 FORMERLY  
 RIGHT OF WAY AND TRACK MAP  
 CLEVELAND, AKRON AND CINCINNATI RAILWAY  
 OPERATED BY THE  
**PENNSYLVANIA COMPANY**  
 AKRON DIVISION  
 STATION 4030+78 TO STATION 4083+58  
 SCALE: 1 IN. = 100 FT. JUNE 30, 1916  
 OFFICE OF VALUATION ENGINEER  
 PITTSBURGH, PA.

V10  
OHIO  
50  
FORMERLY  
V21  
OHIO  
50