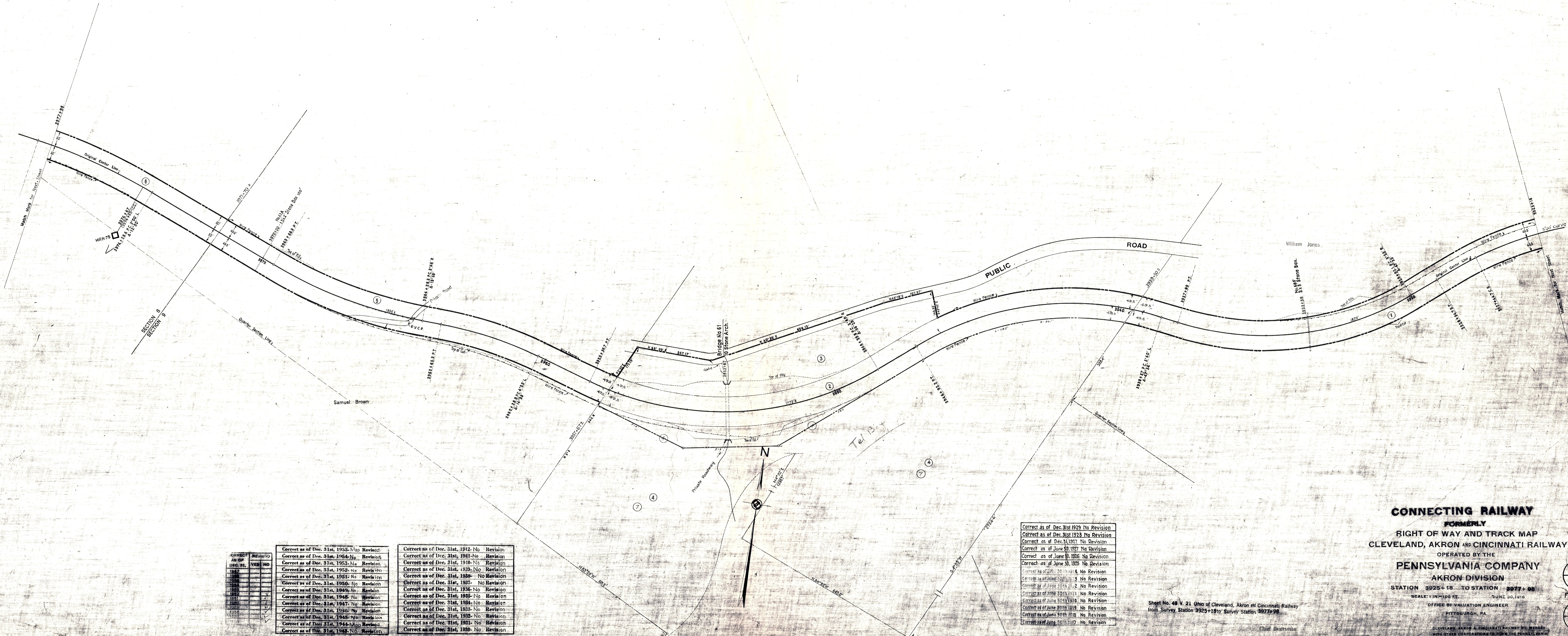


HOLMES COUNTY, OHIO
RICHLAND TOWNSHIP



DATE	REVISION	NO.
1955	Map Revised	
1954	No Revision	
1953	No Revision	
1952	No Revision	
1951	No Revision	
1950	No Revision	
1949	No Revision	
1948	No Revision	
1947	No Revision	
1946	No Revision	
1945	No Revision	
1944	Map Revised	
1943	No Revision	

Correct as of Dec. 31st, 1942	No Revision
Correct as of Dec. 31st, 1941	No Revision
Correct as of Dec. 31st, 1940	No Revision
Correct as of Dec. 31st, 1939	No Revision
Correct as of Dec. 31st, 1938	No Revision
Correct as of Dec. 31st, 1937	No Revision
Correct as of Dec. 31st, 1936	No Revision
Correct as of Dec. 31st, 1935	No Revision
Correct as of Dec. 31st, 1934	No Revision
Correct as of Dec. 31st, 1933	No Revision
Correct as of Dec. 31st, 1932	No Revision
Correct as of Dec. 31st, 1931	No Revision
Correct as of Dec. 31st, 1930	No Revision

Correct as of Dec. 31st 1929	No Revision
Correct as of Dec. 31st 1928	No Revision
Correct as of Dec. 31st 1917	No Revision
Correct as of June 30 1917	No Revision
Correct as of June 30 1916	No Revision
Correct as of June 30 1915	No Revision
Correct as of June 30 1914	No Revision
Correct as of June 30 1913	No Revision
Correct as of June 30 1912	No Revision
Correct as of June 30 1911	No Revision
Correct as of June 30 1910	No Revision
Correct as of June 30 1909	No Revision
Correct as of June 30 1908	No Revision
Correct as of June 30 1907	No Revision

Sheet No. 48 V. 21 Ohio of Cleveland, Akron & Cincinnati Railway
from Survey Station 3925+18 to Survey Station 3977+98

CONNECTING RAILWAY
FORMERLY
RIGHT OF WAY AND TRACK MAP
CLEVELAND, AKRON AND CINCINNATI RAILWAY
OPERATED BY THE
PENNSYLVANIA COMPANY
AKRON DIVISION
STATION 3925+18 TO STATION 3977+98
SCALE: 1"=100 FT. JUNE 30, 1916
OFFICE OF VALUATION ENGINEER
PITTSBURGH, PA.
CLEVELAND, AKRON & CINCINNATI RAILWAY CO. INCORPORATED
WITH OTHER CORPORATIONS TO FORM THE PENNSYLVANIA
OHIO & DETROIT RAILROAD COMPANY JULY 1, 1904

V10
OHIO
48
FORMERLY
V21
OHIO
48

V10
OHIO
48

VS 7367 LC 8187 MY 741 751