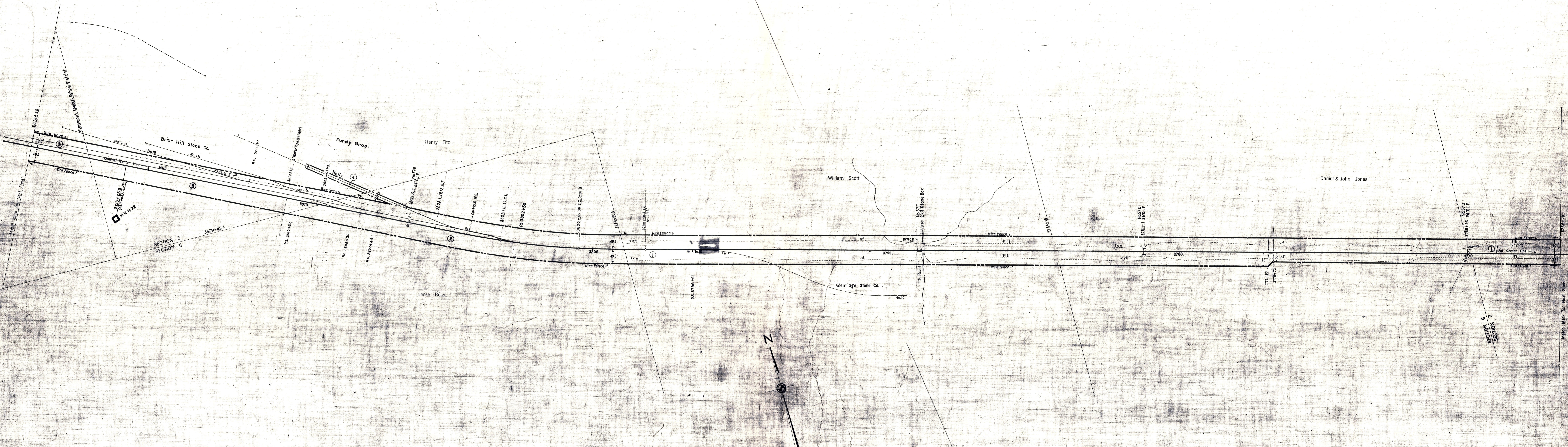


HOLMES COUNTY, OHIO
RICHLAND TOWNSHIP



SCHEDULE OF SIDINGS AND CROSSOVERS
Lengths June 30, 1916

Code	Location	Class	Length	Private	Total	Remarks
11	Richland Twp.	S	500'		500'	
5	Glenmont Sp. Sch. Dist.	P	347'		347'	Added 8-10-15 Length 347' See Map 46

V10
OHIO
45

AS OR	REVISED	YES	NO
1916			
1917			
1918			
1919			
1920			
1921			
1922			
1923			
1924			
1925			
1926			
1927			
1928			
1929			
1930			
1931			
1932			
1933			
1934			
1935			
1936			
1937			
1938			
1939			
1940			
1941			
1942			
1943			
1944			
1945			
1946			
1947			
1948			
1949			
1950			
1951			
1952			
1953			
1954			
1955			
1956			
1957			
1958			
1959			
1960			
1961			
1962			
1963			
1964			
1965			
1966			
1967			
1968			
1969			
1970			
1971			
1972			
1973			
1974			
1975			
1976			
1977			
1978			
1979			
1980			
1981			
1982			
1983			
1984			
1985			
1986			
1987			
1988			
1989			
1990			
1991			
1992			
1993			
1994			
1995			
1996			
1997			
1998			
1999			
2000			

Correct as of Dec. 31st, 1955- No Revision
Correct as of Dec. 31st, 1954- No Revision
Correct as of Dec. 31st, 1953- No Revision
Correct as of Dec. 31st, 1952- No Revision
Correct as of Dec. 31st, 1951- Map Revised
Correct as of Dec. 31st, 1950- No Revision
Correct as of Dec. 31st, 1949- No Revision
Correct as of Dec. 31st, 1948- No Revision
Correct as of Dec. 31st, 1947- No Revision
Correct as of Dec. 31st, 1946- Map Revised
Correct as of Dec. 31st, 1945- No Revision
Correct as of Dec. 31st, 1944- No Revision
Correct as of Dec. 31st, 1943- No Revision
Correct as of Dec. 31st, 1942- No Revision
Correct as of Dec. 31st, 1941- No Revision
Correct as of Dec. 31st, 1940- No Revision
Correct as of Dec. 31st, 1939- No Revision
Correct as of Dec. 31st, 1938- No Revision
Correct as of Dec. 31st, 1937- No Revision
Correct as of Dec. 31st, 1936- No Revision
Correct as of Dec. 31st, 1935- No Revision
Correct as of Dec. 31st, 1934- No Revision
Correct as of Dec. 31st, 1933- Map Revised
Correct as of Dec. 31st, 1932- Map Revised
Correct as of Dec. 31st, 1931- No Revision
Correct as of Dec. 31st, 1930- Map Revised

Correct as of Dec. 31st, 1929- Map Revised
Correct as of Dec. 31st, 1928- Map Revised
Correct as of Dec. 31st, 1927- No Revision
Correct as of Dec. 31st, 1926- No Revision
Correct as of Dec. 31st, 1925- No Revision
Correct as of Dec. 31st, 1924- No Revision
Correct as of Dec. 31st, 1923- No Revision
Correct as of Dec. 31st, 1922- No Revision
Correct as of Dec. 31st, 1921- No Revision
Correct as of Dec. 31st, 1920- No Revision
Correct as of Dec. 31st, 1919- No Revision
Correct as of Dec. 31st, 1918- No Revision
Correct as of Dec. 31st, 1917- No Revision

Correct as of Dec. 31st, 1916- No Revision
Correct as of Dec. 31st, 1915- No Revision
Correct as of Dec. 31st, 1914- No Revision
Correct as of Dec. 31st, 1913- No Revision
Correct as of Dec. 31st, 1912- No Revision
Correct as of Dec. 31st, 1911- No Revision
Correct as of Dec. 31st, 1910- No Revision
Correct as of Dec. 31st, 1909- No Revision
Correct as of Dec. 31st, 1908- No Revision
Correct as of Dec. 31st, 1907- No Revision
Correct as of Dec. 31st, 1906- No Revision
Correct as of Dec. 31st, 1905- No Revision
Correct as of Dec. 31st, 1904- No Revision
Correct as of Dec. 31st, 1903- No Revision
Correct as of Dec. 31st, 1902- No Revision
Correct as of Dec. 31st, 1901- No Revision
Correct as of Dec. 31st, 1900- No Revision

Sheet No. 45V. 21 Ohio of Cleveland, Akron & Cincinnati Railway
from Survey Station 3768+76 to Survey Station 3819+59

CONNECTING RAILWAY
FORMERLY
RIGHT OF WAY AND TRACK MAP
CLEVELAND, AKRON AND CINCINNATI RAILWAY
OPERATED BY THE

PENNSYLVANIA COMPANY
AKRON DIVISION

STATION 3768+76 TO STATION 3819+59

SCALE: 1 IN. = 100 FT. JUNE 30, 1916

OFFICE OF VALUATION ENGINEER
PITTSBURGH, PA.

V10
OHIO
45
FORMERLY
V21
OHIO
45

CLEVELAND, AKRON & CINCINNATI RAILWAY CO. FORMED
WITH OTHER CORPORATIONS TO FORM THE PENNSYLVANIA
OHIO & WEST VIRGINIA RAILROAD COMPANY JULY 1, 1894