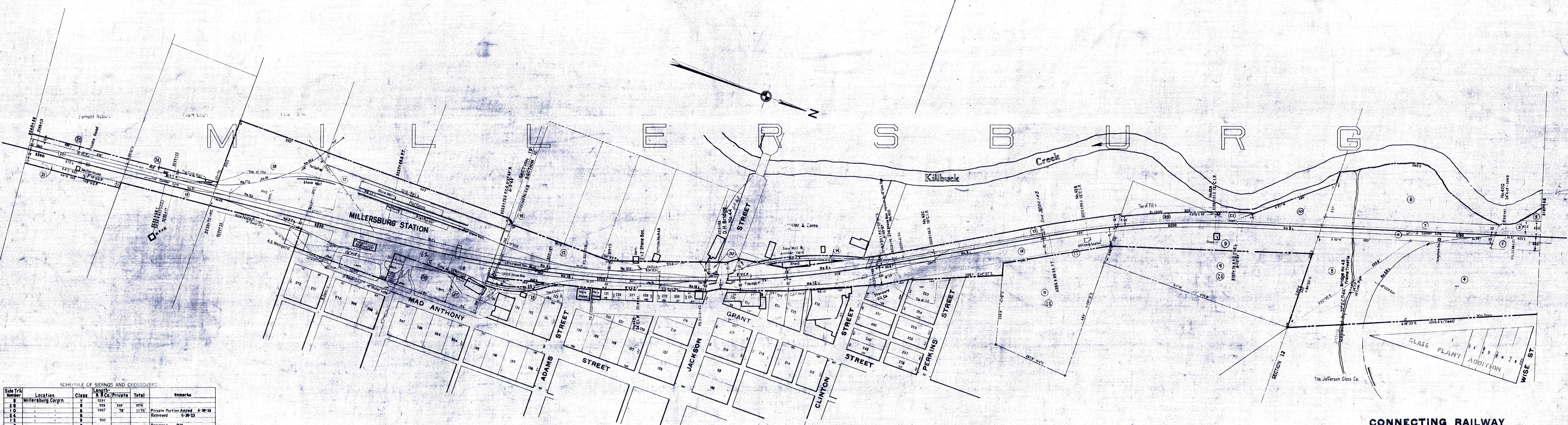


HOLMES COUNTY, OHIO
HARDY TOWNSHIP



SCHEDULE OF SIDINGS AND CROSSOVERS

Side Trk Number	Location	Class	Length	Private	Total	Remarks
26	Millersburg Corpn	Y	524	548	1072	
10		B	1097	78	1175	Private Portion Added 6-30-26
24		B				Removed 6-30-23
12		B	700			
9		P	5523			Removed 1928
7		B	379			Lengthened 1488 11-9-19
11		P	1491			Lengthened 441 6-10-16
17		Y	1444			Lengthened 126 12-31-27
18		Y				Shortened 231 6-30-19 Removed 12-31-27
19		Y				Eng House 514 No. 15 removed 6-30-19
28		B	650			Removed 6-30-18
18		Y	881			
18		B	200			
20		B	492			
22		B	580			
30		B	280	109	389	Lengthened 54 6-30-11 Lengthened 6-30-26
01		X-over	197			In service 6-30-17
02			197			6-30-18
03						6-30-18
32		M	618			6-30-21
15		Y				Added 6-30-18 Removed 1928
33		B	325			Added 6-24-26
31		B	170			8-27-20

VIO OHIO 34

CORRECT AS OF DEC. 31, 1929	REVISOR	YES	NO
1927			
1929			
1930			
1934			
1935			
1937			
1938			
1939			
1940			
1941			
1942			
1943			
1944			
1945			
1946			
1947			
1948			
1949			
1950			
1951			
1952			
1953			
1954			
1955			

Correct as of Dec. 31st, 1955- No Revision
 Correct as of Dec. 31st, 1954- No Revision
 Correct as of Dec. 31st, 1953- Map Revised
 Correct as of Dec. 31st, 1952- No Revision
 Correct as of Dec. 31st, 1951- No Revision
 Correct as of Dec. 31st, 1950- No Revision
 Correct as of Dec. 31st, 1949- No Revision
 Correct as of Dec. 31st, 1948- No Revision
 Correct as of Dec. 31st, 1947- Map Revised
 Correct as of Dec. 31st, 1946- Map Revised
 Correct as of Dec. 31st, 1945- No Revision
 Correct as of Dec. 31st, 1944- Map Revised
 Correct as of Dec. 31st, 1943- No Revision

Correct as of Dec. 31st, 1942- Map Revised
 Correct as of Dec. 31st, 1941- No Revision
 Correct as of Dec. 31st, 1940- No Revision
 Correct as of Dec. 31st, 1939- No Revision
 Correct as of Dec. 31st, 1938- No Revision
 Correct as of Dec. 31st, 1937- Map Revised
 Correct as of Dec. 31st, 1936- No Revision
 Correct as of Dec. 31st, 1935- Map Revised
 Correct as of Dec. 31st, 1934- Map Revised
 Correct as of Dec. 31st, 1933- No Revision
 Correct as of Dec. 31st, 1932- No Revision
 Correct as of Dec. 31st, 1931- No Revision
 Correct as of Dec. 31st, 1930- No Revision
 Correct as of Dec. 31st, 1929- Map Revised

Sheet No. 34 V. 21 Ohio of Cleveland, Akron and Cincinnati Railway
 from Survey Station 3187+58 to Survey Station 3240+38

CONNECTING RAILWAY
 FORMERLY
 RIGHT OF WAY AND TRACK MAP
 CLEVELAND, AKRON AND CINCINNATI RAILWAY
 OPERATED BY THE
PENNSYLVANIA COMPANY
 AKRON DIVISION
 STATION 3187+58 TO STATION 3240+38
 SCALE: 1 IN. = 100 FT. JUNE 30, 1916
 OFFICE OF VALUATION ENGINEER
 PITTSBURGH, PA.
 CLEVELAND, AKRON & CINCINNATI RAILWAY CO. MERGED
 WITH OTHER CORPORATIONS TO FORM THE PENNSYLVANIA
 RAILROAD COMPANY JULY 1, 1924

VIO OHIO 34
 FORMERLY V21 OHIO 34

VS 7307 LC 8187 MP 60.1-61.1