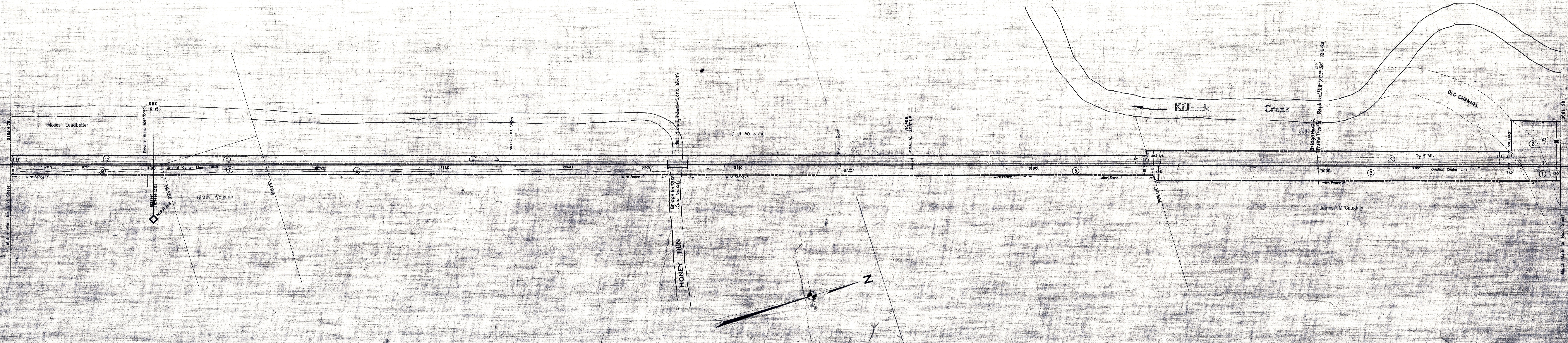


HOLMES COUNTY, OHIO.
HARDY TOWNSHIP



CORRECT AS OF	REVISED	NO.	NO.
1955			
1954			
1953			
1952			
1951			
1950			
1949			
1948			
1947			
1946			
1945			
1944			
1943			
1942			
1941			
1940			
1939			
1938			
1937			
1936			
1935			
1934			
1933			
1932			
1931			
1930			

CONNECTING RAILWAY
FORMERLY
RIGHT OF WAY AND TRACK MAP
CLEVELAND, AKRON AND CINCINNATI RAILWAY
OPERATED BY THE
PENNSYLVANIA COMPANY
AKRON DIVISION
STATION 3081+98 TO STATION 3134+78
SCALE 1 IN. = 100 FT. JUNE 30, 1918
OFFICE OF VALUATION ENGINEER
PITTSBURGH, PA.
CLEVELAND, AKRON & CINCINNATI RAILWAY CO. MERGED
WITH OTHER CORPORATIONS TO FORM THE PENNSYLVANIA
AND DISTRICT RAILROAD COMPANY JULY 1, 1882

Sheet No. 22 V. 21 Ohio of Cleveland, Akron and Cincinnati Railway
from Survey Station 3081+98 to Survey Station 3134+78

VS 7307 LC 8137 TR 551 591