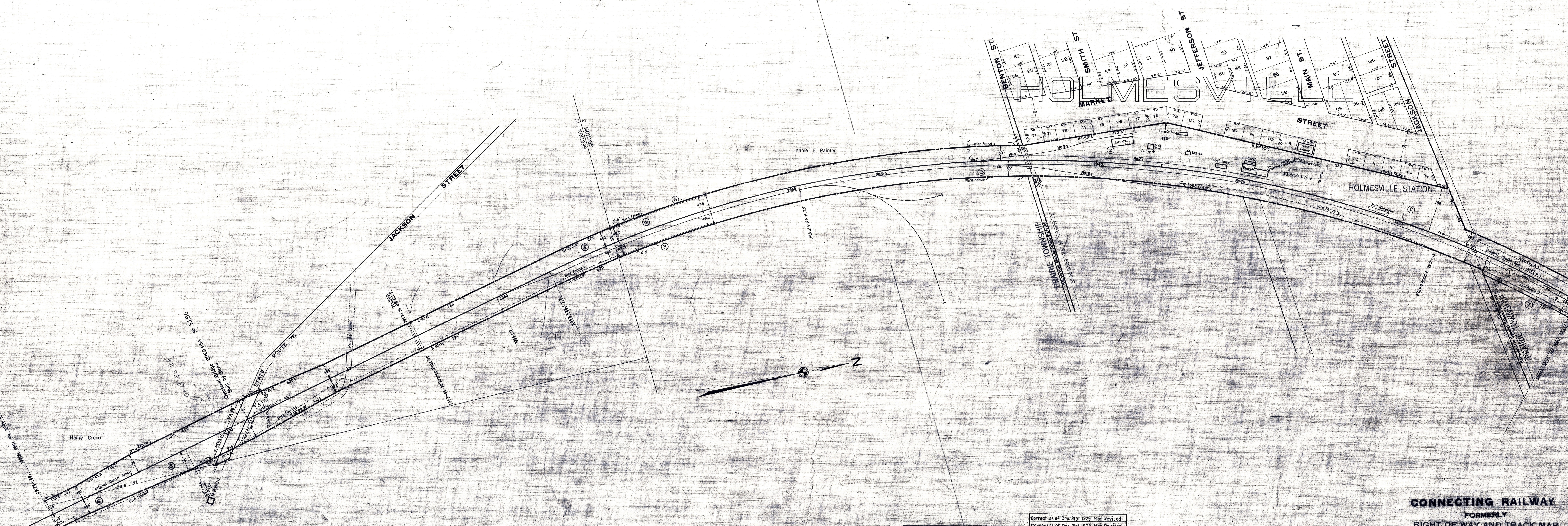


HOLMES COUNTY, OHIO.



SCHEDULE OF SIDINGS AND CROSSOVERS

Side Trk Number	Location	Class	R.R. Co.	Private	Total	Remarks
1	Holmesville Corpn.	P	153		153	
2		B	242	233	475	
3		B	590		590	
4		B	350		350	
5	S.S.D.	P	335.6		335.6	Lengthened 5815' 6-30-20. Total L. 5424'
6		B	117		117	
7		B	180		180	
8		B	40		40	
01	Corpn.	X-Over				In service 6-30-20. Removed 1929
02						6-30-20

CORRECT AS OF DEC. 31,	REVISED	YES	NO
1929			
1930			
1931			
1932			
1933			
1934			
1935			
1936			
1937			
1938			
1939			
1940			
1941			
1942			
1943			
1944			
1945			

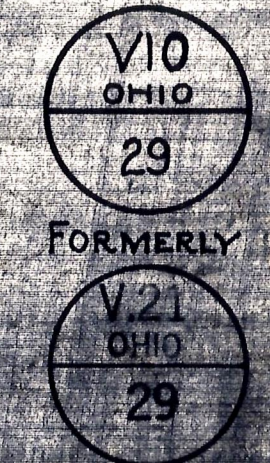
Correct as of Dec. 31st, 1955. No Revision
 Correct as of Dec. 31st, 1954. No Revision
 Correct as of Dec. 31st, 1953. No Revision
 Correct as of Dec. 31st, 1952. No Revision
 Correct as of Dec. 31st, 1951. No Revision
 Correct as of Dec. 31st, 1950. No Revision
 Correct as of Dec. 31st, 1949. No Revision
 Correct as of Dec. 31st, 1948. No Revision
 Correct as of Dec. 31st, 1947. No Revision
 Correct as of Dec. 31st, 1946. No Revision
 Correct as of Dec. 31st, 1945. No Revision
 Correct as of Dec. 31st, 1944. No Revision
 Correct as of Dec. 31st, 1943. No Revision
 Correct as of Dec. 31st, 1942. No Revision

Correct as of Dec. 31st, 1942. Map Revised
 Correct as of Dec. 31st, 1941. No Revision
 Correct as of Dec. 31st, 1940. No Revision
 Correct as of Dec. 31st, 1939. No Revision
 Correct as of Dec. 31st, 1938. No Revision
 Correct as of Dec. 31st, 1937. No Revision
 Correct as of Dec. 31st, 1936. No Revision
 Correct as of Dec. 31st, 1935. Map Revised
 Correct as of Dec. 31st, 1934. Map Revised
 Correct as of Dec. 31st, 1933. No Revision
 Correct as of Dec. 31st, 1932. No Revision
 Correct as of Dec. 31st, 1931. No Revision
 Correct as of Dec. 31st, 1930. No Revision

Correct as of Dec. 31st, 1929. Map Revised
 Correct as of Dec. 31st, 1928. Map Revised
 Correct as of Dec. 31, 1927. No Revision
 Correct as of Dec. 31st, 1926. No Revision
 Correct as of Dec. 31st, 1925. No Revision
 Correct as of Dec. 31st, 1924. No Revision
 Correct as of Dec. 31st, 1923. Map Revised
 Correct as of Dec. 31st, 1922. No Revision
 Correct as of Dec. 31st, 1921. Map Revised
 Correct as of Dec. 31st, 1920. Map Revised
 Correct as of Dec. 31st, 1919. No Revision
 Correct as of Dec. 31st, 1918. Map Revised
 Correct as of Dec. 31st, 1917. Map Revised

CONNECTING RAILWAY
 FORMERLY
 RIGHT OF WAY AND TRACK MAP
 CLEVELAND, AKRON AND CINCINNATI RAILWAY
 OPERATED BY THE
PENNSYLVANIA COMPANY
 AKRON DIVISION
 STATION 2923+58 TO STATION 2976+38
 SCALE: 1 IN. = 100 FT. JUNE 30, 1946
 OFFICE OF VALUATION ENGINEER
 PITTSBURGH, PA.

Sheet No. 29 V. 21 Ohio of Cleveland, Akron and Cincinnati Railway
 from Survey Station 2923+58 to Survey Station 2976+38



VS 7327 LC 8137 MP 55.1-54.1