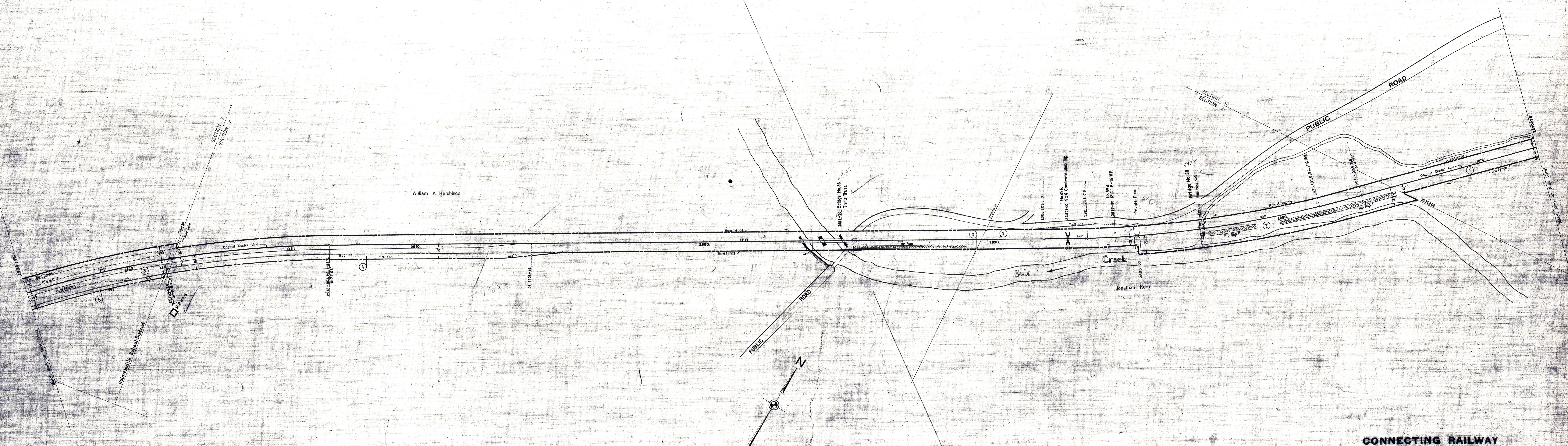


HOLMES COUNTY, OHIO.
PRAIRIE TOWNSHIP



SCHEDULE OF SIDINGS AND CROSSOVERS

Siding Number	Location	Class	Length		Remarks
			R.R. Co.	Private	
5	Prairie Twp.	P			In Service 10-31-19. See Map 29.

Year	Correct	Revised
1907		
1908		
1909		
1910		
1911		
1912		
1913		
1914		
1915		
1916		
1917		
1918		
1919		
1920		
1921		
1922		
1923		
1924		
1925		
1926		
1927		
1928		
1929		
1930		
1931		
1932		
1933		
1934		
1935		
1936		
1937		
1938		
1939		
1940		
1941		
1942		
1943		
1944		
1945		
1946		
1947		
1948		
1949		
1950		
1951		
1952		
1953		
1954		
1955		

Correct as of Dec. 31st, 1955: No Revision
 Correct as of Dec. 31st, 1954: No Revision
 Correct as of Dec. 31st, 1953: No Revision
 Correct as of Dec. 31st, 1952: No Revision
 Correct as of Dec. 31st, 1951: No Revision
 Correct as of Dec. 31st, 1950: No Revision
 Correct as of Dec. 31st, 1949: No Revision
 Correct as of Dec. 31st, 1948: No Revision
 Correct as of Dec. 31st, 1947: No Revision
 Correct as of Dec. 31st, 1946: No Revision
 Correct as of Dec. 31st, 1945: No Revision
 Correct as of Dec. 31st, 1944: No Revision
 Correct as of Dec. 31st, 1943: No Revision

Correct as of Dec. 31st, 1942: No Revision
 Correct as of Dec. 31st, 1941: No Revision
 Correct as of Dec. 31st, 1940: No Revision
 Correct as of Dec. 31st, 1939: No Revision
 Correct as of Dec. 31st, 1938: No Revision
 Correct as of Dec. 31st, 1937: No Revision
 Correct as of Dec. 31st, 1936: No Revision
 Correct as of Dec. 31st, 1935: No Revision
 Correct as of Dec. 31st, 1934: No Revision
 Correct as of Dec. 31st, 1933: No Revision
 Correct as of Dec. 31st, 1932: No Revision
 Correct as of Dec. 31st, 1931: No Revision
 Correct as of Dec. 31st, 1930: No Revision

Correct as of Dec. 31st 1929: No Revision
 Correct as of Dec. 31st 1928: Map Revised
 Correct as of Dec. 31st 1927: No Revision
 Correct as of June 30, 1926: No Revision
 Correct as of June 30, 1925: No Revision
 Correct as of June 30, 1924: No Revision
 Correct as of June 30, 1923: No Revision
 Correct as of June 30, 1922: No Revision
 Correct as of June 30, 1921: No Revision
 Correct as of June 30, 1920: Map Revised
 Correct as of June 30, 1919: No Revision
 Correct as of June 30, 1918: Map Revised
 Correct as of June 30, 1917: No Revision

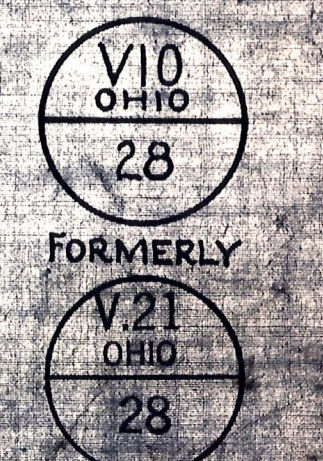
Sheet No. 28 - V. 21 Ohio of Cleveland, Akron and Cincinnati Railway
 from Survey Station 2870+78 to Survey Station 2923+58

CONNECTING RAILWAY
 FORMERLY
 RIGHT OF WAY AND TRACK MAP
 CLEVELAND, AKRON AND CINCINNATI RAILWAY
 OPERATED BY THE

PENNSYLVANIA COMPANY
 AKRON DIVISION
 STATION 2870+78 TO STATION 2923+58

SCALE: 1 IN. = 100 FT. JUNE 30, 1916
 OFFICE OF VALUATION ENGINEER
 PITTSBURGH, PA.

CLEVELAND, AKRON & CINCINNATI RAILWAY CO. MERGED
 WITH OTHER CORPORATIONS TO FORM THE PENNSYLVANIA
 CO. & DETROIT RAILROAD COMPANY JULY 1, 1917. 082 8307 D



V57807 IC 8137 MP 54.6-55.1 V57807 IC 8137 MP 54.6-55.1