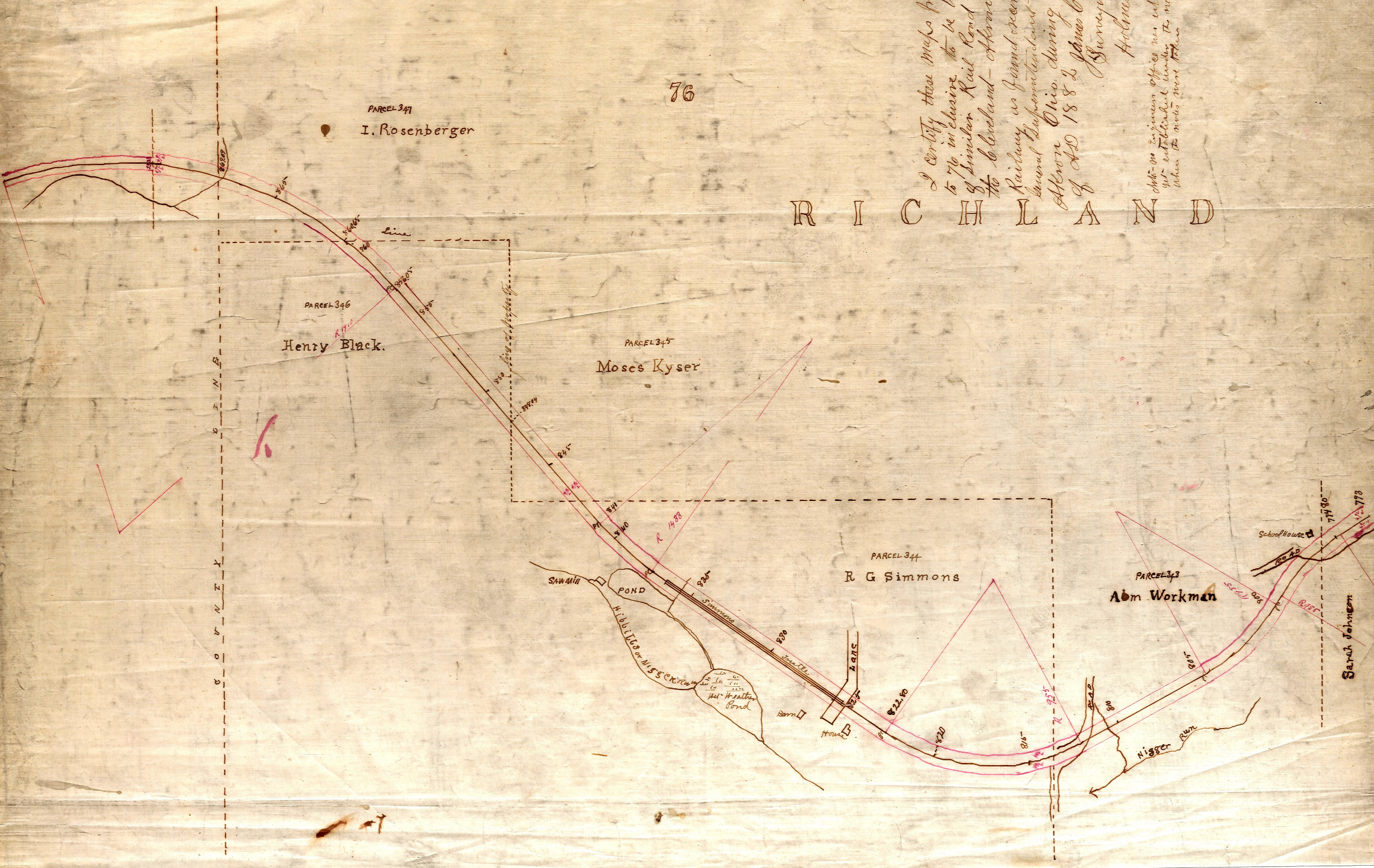


R I C H L A N D



I certify these maps from ch. 57 to 76 inclusive to be true copies of similar Rail Road Maps of the Cleveland - Akron & Columbus Railway as found executed in the General Superintendent's Office at Akron Ohio during the summer of AD 1882 James C. Calhoun Surveyor of Holmes County Ohio

Chas. M. Engineer's office was established 1880 but established under the new administration when the rules were then