



THOMAS E. FERGUSON
AUDITOR OF STATE
 COLUMBUS, OHIO 43216

DEPUTY AUDITORS:

JAMES A. BOLDEN
 Administration

RICHARD G. NUSS
 CPA
 Auditing Division

RUSSELL ROUCH
 Management Advising
 Service

CERTIFICATION

I, Thomas Aquinas Burke, Supervisor, Land Office of the Auditor of State, duly authorized to perform the duties of the Auditor of State prescribed in Section 115.21 of the Ohio Revised Code, hereby certifies that the enclosed field notes and plats are true copies taken from records in our office. These plats and field notes are for the following townships in the United States Military District:

1. Range 4, Townships 8, 9 and 10
2. Range 5, Townships 8, 9, and 10
3. Range 6, Townships 8, 9, and 10
4. Range 7, Townships 8, 9, and 10
5. Range 8, Townships 8 and 9
6. Range 9, Townships 8 and 9

and in the Ohio River Survey

1. Range 11, Townships 14 and 15
2. Range 12, Townships 14 and 15
3. Range 13, Townships 13 and 14
4. Range 14, Townships 17 and 18
5. Range 15, Townships 19 and 20

Witness my hand and seal of the Office of the Auditor of State, at Columbus, Ohio, this Twentieth-Nine day of November in the year of Our Lord Nineteen Hundred and Eighty-Three (1983).

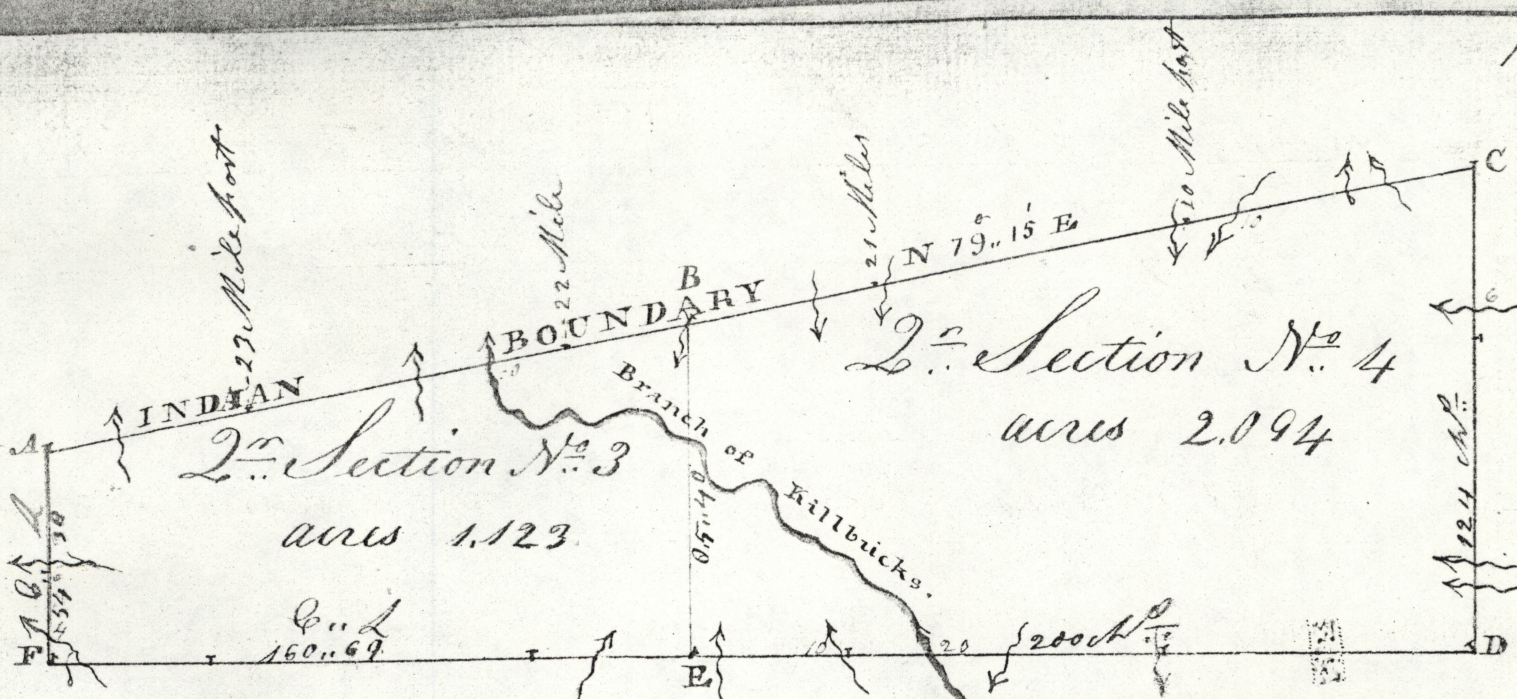
Thomas Aquinas Burke
 Supervisor
 State Land Office



USMD
 R T
 6 10

Description of Township No. 10 Range No. 6

Corner Posts bearings trees &c				Distances quality of the Land &c	
Sts	Kind of Wood	Inches diam etc	Course they bear	Links distant	
A	Beech	10	S 30.30 W	3	From A to B good farming Land timber Oak Hickory, sugar tree Maple, Elm &c
	White Oak	26	S 31 E	14	
B					from B to C generally the first rate farming Land, timber Oak, Hickory, with sugar tree &c
C	White Oak	14	S 19 E	48	from C to D good farming Land except timber Oak, Hickory, Chestnut Sassafras &c
	Y ^e	15	S 19 W	66	
D	White Oak	16	N 17.30 W	13	from D to E fine farming Land except a Marsh swamp timber oak Hickory, Chestnut sassafras &c
	Y ^e	14	N 40 E	13	
E	White Oak	15	N 25 W	36	from E to F Land good except the first half mile is some what broken & stony timber Oak, Hickory, Chestnut, Gum, Beech &c
	Hickory	18	S 36.30 E	30	
F	White Oak	30	N 32 E	6	from F to A on hill Land timber White Oak & Hickory
	Poplar	18	S 69 E	0	



TOWNSHIP N^o X
RANGE N^o VI

MILITARY DISTRICT.