

**THOMAS E. FERGUSON**  
 AUDITOR OF STATE  
 COLUMBUS, OHIO 43216

DEPUTY AUDITORS:

JAMES A. BOLDEN  
 Administration

RICHARD G. NUSS  
 CPA  
 Auditing Division

RUSSELL ROUCH  
 Management Advising  
 Service

CERTIFICATION

I, Thomas Aquinas Burke, Supervisor, Land Office of the Auditor of State, duly authorized to perform the duties of the Auditor of State prescribed in Section 115.21 of the Ohio Revised Code, hereby certifies that the enclosed field notes and plats are true copies taken from records in our office. These plats and field notes are for the following townships in the United States Military District:

1. Range 4, Townships 8, 9 and 10
2. Range 5, Townships 8, 9, and 10
3. Range 6, Townships 8, 9, and 10
4. Range 7, Townships 8, 9, and 10
5. Range 8, Townships 8 and 9
6. Range 9, Townships 8 and 9

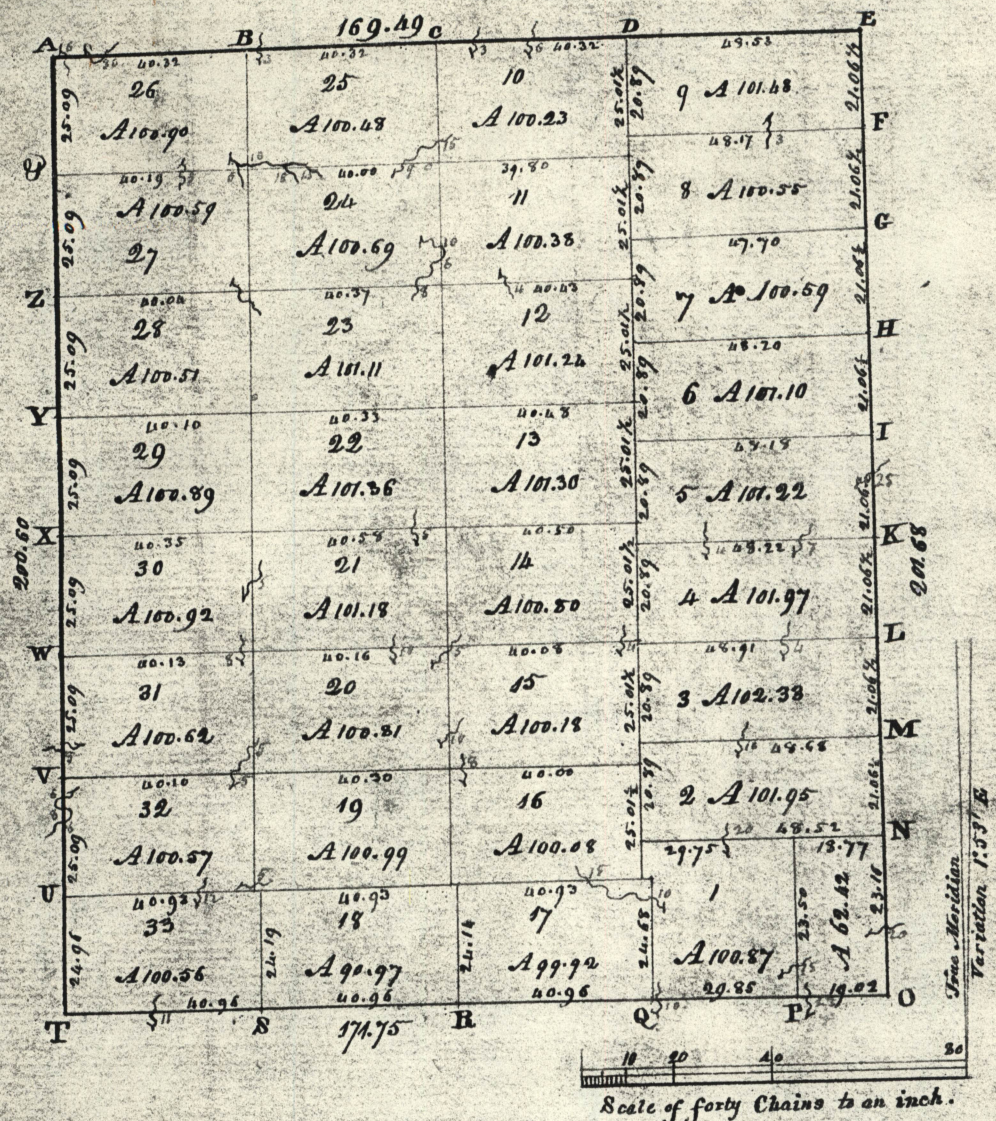
and in the Ohio River Survey

1. Range 11, Townships 14 and 15
2. Range 12, Townships 14 and 15
3. Range 13, Townships 13 and 14
4. Range 14, Townships 17 and 18
5. Range 15, Townships 19 and 20

Witness my hand and seal of the Office of the Auditor of State, at Columbus, Ohio, this Twentieth-Nine day of November in the year of Our Lord Nineteen Hundred and Eighty-Three (1983).

Thomas Aquinas Burke  
 Supervisor  
 State Land Office



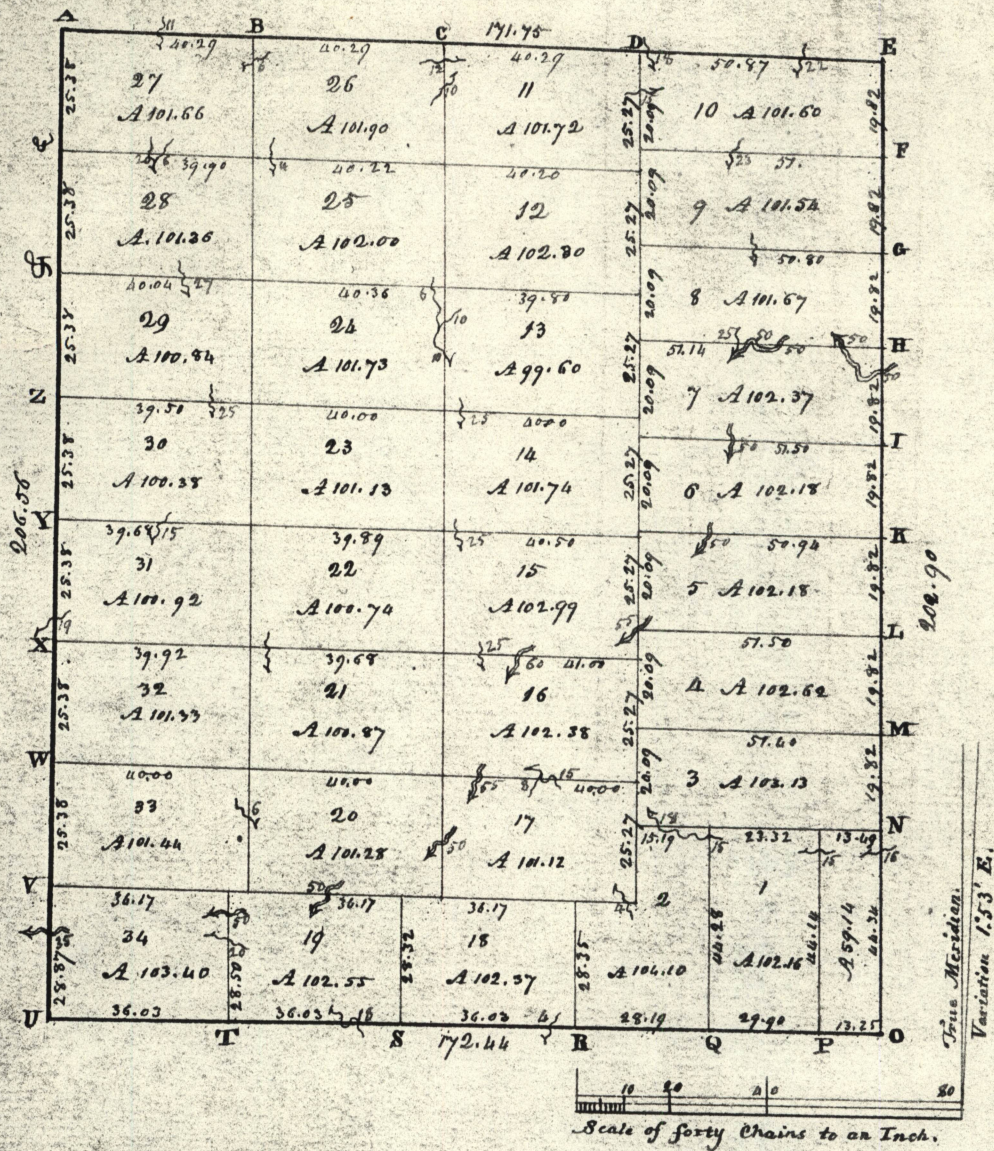


Section N<sup>o</sup> II, Township N<sup>o</sup> VIII, Range N<sup>o</sup> VI. Surveyed by W<sup>m</sup> Cutbush. 1808.

Section N<sup>o</sup>. 2, Township N<sup>o</sup>. 8, Range N<sup>o</sup>. 6.

Interior corners of lots described.

| Exterior corners | Bearing trees | Links diam. | Links dist. | Interior corners of lots | Bearing trees | Links diam. | Links dist. |
|------------------|---------------|-------------|-------------|--------------------------|---------------|-------------|-------------|
| A                |               |             |             | 8.9                      | Juniper       | 5           | S 23 N 3    |
| B                | Maple         | 12          | N 56 E 28   | 10.11                    | Nickory       | 7           | N 15 E 23   |
|                  | do            | 5           | S 24 E 20   |                          | do            | 5           | N 19 E 10   |
| C                | Maple         | 14          | N 22 E 14   |                          | do            | 5           | S 57 E 26   |
|                  | W. Walnut     | 7           | S 61 N 23   | 7.8                      | W. Oak        | 28          | N 12 E 20   |
| D                | W. Oak        | 20          | S 6 N 12    |                          | do            | 10          | S 29 E 37   |
|                  | Nickory       | 6           | N 20 E 26   | 11.12                    | W. Oak        | 15          | N 3 N 23    |
| E                |               |             |             |                          | do            | 7           | S 60 E 20   |
| F                | W. Oak        | 30          | S 80 E 28   | 6.9                      | W. Oak        | 30          | N 69 N 29   |
|                  | Nickory       | 8           | N 32 E 40   |                          | Chesnut       | 15          | S 68 E 18   |
| G                | W. Oak        | 14          | N 22 E 24   | 12.13                    | Maple         | 12          | N 82 E 26   |
|                  | Chesnut       | 16          | N 65 E 24   |                          | Maple         | 10          | N 89 N 3    |
| H                | Maple         | 10          | N 27 E 12   | 5.6                      | Maple         | 10          | S 72 E 26   |
|                  | do            | 5           | S 17 E 36   |                          | Nickory       | 6           | N 35 E 39   |
| I                | Nickory       | 8           | N 84 E 18   | 13.14                    | Nickory       | 7           | N 60 E 8    |
|                  | do            | 8           | S 85 E 32   |                          | do            | 10          | S 23 E 39   |
| J                | Maple         | 15          | S 19 E 32   | 4.5                      | Elm           | 8           | N 55 E 24   |
|                  | Juniper       | 5           | N 56 E 37   |                          | Oak           | 12          | S 16 E 30   |
| L                | Nickory       | 6           | S 29 E 23   | 14.15                    | Maple         | 6           | N 5 E 21    |
|                  | Oak           | 5           | N 39 E 13   |                          | do            | 8           | S 79 N 17   |
| M                | Sugar         | 4           | N 14 E 18   | 3.4                      | Maple         | 7           | N 73 E 32   |
|                  | W. Oak        | 24          | S 23 E 30   |                          | Nickory       | 12          | S 66 E 50   |
| N                | W. Oak        | 28          | N 63 E 32   | 2.3                      | W. Oak        | 20          | S 38 E 32   |
|                  | do            | 30          | N 81 E 34   |                          | do            | 10          | S 85 E 17   |
| O                |               |             |             | 15.16                    | W. Oak        | 14          | S 83 E 32   |
| P                | W. Oak        | 24          | S 19 E 5    |                          | do            | 15          | N 60 E 40   |
|                  | do            | 20          | N 31 E 26   | 1.2                      | W. Oak        | 12          | N 42 E 38   |
| Q                | Juniper       | 12          | N 42 E 22   |                          | Nickory       | 7           | N 20 E 22   |
|                  | do            | 6           | S 16 E 30   | 16(8E)                   | W. Oak        | 14          | N 79 E 19   |
| R                | W. Oak        | 30          | S 26 E 15   |                          | do            | 16          | N 53 E 36   |
|                  | do            | 24          | N 24 E 22   | 18.33                    | Juniper       | 5           | S 39 E 8    |
| S                | W. Oak        | 46          | N 35 E 6    |                          | Elm           | 10          | S 72 E 46   |
|                  | Maple         | 8           | S 37 E 8    | 17.18                    | Oak           | 8           | N 56 E 15   |
| T                |               |             |             |                          | Nickory       | 7           | S 21 E 32   |
| U                | W. Oak        | 24          | N 57 E 13   | 17(8E)                   | W. Oak        | 30          | S 19 E 25   |
|                  | do            | 16          | West 10     |                          | Maple         | 14          | S 47 E 27   |
| V                | Beech         | 13          | N 2 N 13    | 18.19                    | Oak           | 10          | S 55 E 30   |
|                  | Poplar        | 15          | S 25 N 30   |                          | Nickory       | 8           | N 6 N 11    |
| W                | W. Oak        | 24          | N 42 E 6    | 19.32                    | Nickory       | 5           | S 8 N 13    |
|                  | W. Oak        | 8           | S 8 E 4     |                          | do            | 24          | N 26 E 36   |
| X                | W. Oak        | 20          | N 47 E 36   | 19.20.31.32              | Maple         | 8           | S 89 N 12   |
|                  | do            | 20          | S 64 E 30   |                          | do            | 12          | S 29 E 10   |
| Y                | Chesnut       | 12          | S 67 E 10   | 15.16.19.20              | Maple         | 6           | S 49 E 18   |
|                  | Beech         | 12          | N 15 E 31   |                          | do            | 6           | S 34 E 18   |
| Z                | W. Oak        | 20          | N 13 E 29   | 20.21.30.31              | Sugar         | 12          | S 12 E 27   |
|                  | do            | 22          | N 44 E 39   |                          | do            | 12          | N 46 E 35   |
|                  | Nickory       | 8           | N 55 E 17   | 11.13.20.21              | Maple         | 8           | N 4 N 23    |
|                  | do            | 5           | S 21 E 24   |                          | Sugar         | 16          | S 17 E 41   |
|                  |               |             |             | 21.22.29.30              | Oak           | 8           | S 60 E 12   |
|                  |               |             |             |                          | Oak           | 24          | S 57 E 17   |
|                  |               |             |             | 13.14.21.32              | W. Oak        | 14          | N 82 E 35   |
|                  |               |             |             |                          | Nickory       | 7           | N 59 E 5    |
|                  |               |             |             | 22.23.28.29              | W. Oak        | 15          | N 33 E 37   |
|                  |               |             |             |                          | do            | 17          | S 27 E 56   |
|                  |               |             |             | 12.13.22.23              | Poplar        | 14          | N 37 E 39   |
|                  |               |             |             |                          | Nickory       | 5           | S 76 N 21   |
|                  |               |             |             | 22.24.27.28              | W. Oak        | 12          | N 23 E 8    |
|                  |               |             |             |                          | Maple         | 7           | N 86 E 14   |
|                  |               |             |             | 11.12.23.24              | W. Oak        | 30          | N 26 E 6    |
|                  |               |             |             |                          | do            | 36          | S 40 E 11   |
|                  |               |             |             | 24.25.26.27              | Maple         | 5           | S 76 E 34   |
|                  |               |             |             |                          | Sugar         | 7           | N 76 E 20   |
|                  |               |             |             | 10.11.24.25              | W. Oak        | 13          | N 20 E 28   |
|                  |               |             |             |                          | Maple         | 7           | S 13 E 19   |
|                  |               |             |             | 1 & 2a:                  | W. Oak        | 14          | N 38 E 24   |
|                  |               |             |             |                          | do            | 10          | S 60 E 40   |

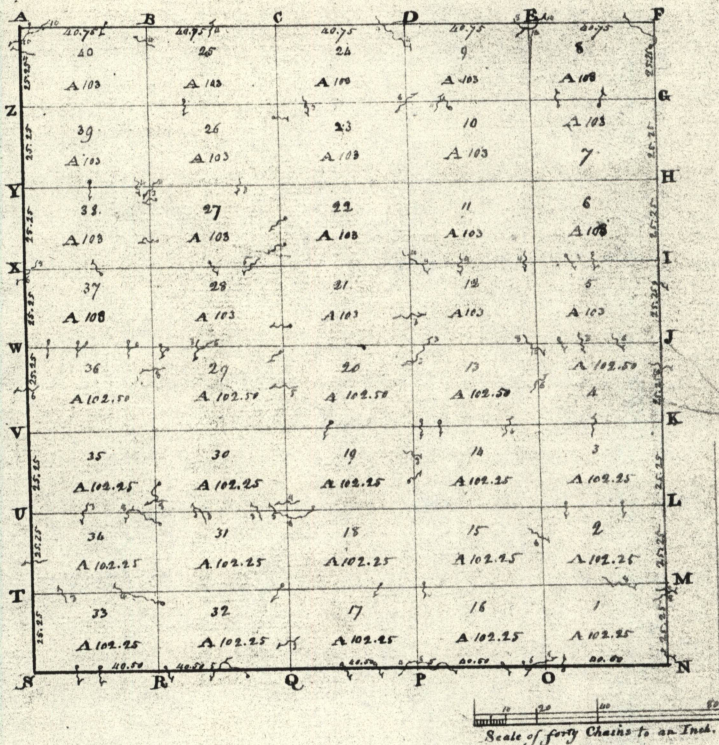


Section N<sup>o</sup> III, Township N<sup>o</sup> VIII, Range N<sup>o</sup> VI. Surveyed by W<sup>m</sup> Cutbush, 1808.

Section No. 3, Township No. 8, Range No. 6

Interior corners of Lots described

| Exterior corner | Bearing trees | Links diam. | Courses & they bear | Links dist. | Corners of Lots | Bearing trees | Links diam. | Courses & they bear | Links dist. |
|-----------------|---------------|-------------|---------------------|-------------|-----------------|---------------|-------------|---------------------|-------------|
| A               |               |             |                     |             | 7.10            | Maple         | 12          | S 82 E              | 10          |
| B               | Hickory       | 11          | S 55 1/2 E          | 22          | do              | 6             | N 67 W      | 19                  | 21          |
|                 | Maple         | 7           | N 76 1/2 W          | 34          | 11.12           | Juniwood      | 5           | N 34 E              | 19          |
| C               | Cherry        | 10          | S 50 W              | 9           |                 | Elm           | 6           | S 14 1/2 W          | 17          |
|                 | Hickory       | 8           | N 38 E              | 36          | 8.9             | Maple         | 14          | N 78 W              | 25          |
| D               | Maple         | 14          | N 41 1/2 E          | 22          |                 | Dojun         | 10          | N 82 E              | 23          |
|                 | Hickory       | 8           | S 69 W              | 12          | 12.13           | N. Oak        | 28          | N 57 1/2 E          | 43          |
| E               | do            | 6           | S 34 E              | 13          |                 | do            | 28          | S 82 W              | 43          |
|                 | N. Oak        | 30          | N 71 1/2 W          | 36          | 7.8             | N. Oak        | 15          | N 32 E              | 15          |
| F               | Maple         | 8           | N 34 E              | 26          |                 | do            | 17          | S 17 1/2 E          | 33          |
|                 | Elm           | 8           | S 27 1/2 W          | 16          | 13.14           | N. Oak        | 30          | S 81 1/2 W          | 28          |
| G               | N. Oak        | 48          | N 88 1/2 W          | 49          |                 | Sugar         | 12          | N 21 1/2 E          | 23          |
|                 | do            | 28          | N 88 E              | 30          | 6.7             | N. Oak        | 28          | N 3 E               | 55          |
| H               | Sugar         | 12          | N 23 1/2 E          | 19          |                 | do            | 16          | S 7 1/2 W           | 18          |
|                 | do            | 18          | S 8 W               | 17          | 5.6             | Hickory       | 12          | S 23 1/2 W          | 13          |
| I               | Hickory       | 14          | S 47 1/2 E          | 13          |                 | do            | 10          | N 66 1/2 E          | 3           |
|                 | B. Gum        | 16          | N 30 W              | 26          | 11.13           | N. Oak        | 18          | S 83 W              | 32          |
| K               | do            | 13          | N 30 W              | 6           |                 | Hickory       | 15          | S 77 E              | 38          |
|                 | Hickory       | 5           | S 68 1/2 E          | 13          | 4.5             | N. Oak        | 15          | S 31 W              | 53          |
| L               | do. Walnut    | 16          | N 26 1/2 E          | 9           |                 | do            | 7           | S 72 1/2 E          | 35          |
|                 | do            | 14          | S 17 W              | 27          | 15.16           | N. Oak        | 5           | S 60 1/2 E          | 6           |
| M               | do. Gum       | 13          | N 33 W              | 16          |                 | do            | 7           | N 76 1/2 E          | 42          |
|                 | N. Oak        | 14          | N 26 E              | 24          | 3.4             | Chestnut      | 13          | S 37 W              | 10          |
| N               | N. Oak        | 10          | N 47 1/2 E          | 8           |                 | Hickory       | 8           | N 33 W              | 17          |
|                 | do            | 7           | N 79 W              | 26          | 16.17           | N. Oak        | 5           | N 21 W              | 21          |
| O               |               |             |                     |             |                 | Cherry        | 7           | S 30 W              | 17          |
| P               | N. Oak        | 48          | N 77 1/2 W          | 25          | 2.3             | Maple         | 12          | N 81 1/2 E          | 15          |
|                 | do            | 40          | N 64 1/2 E          | 24          |                 | do            | 6           | S 43 W              | 14          |
| Q               | N. Oak        | 20          | S 70 E              | 14          | 17(5.8)         | Dojun         | 4           | N 43 1/2 W          | 3           |
|                 | do            | 15          | N 33 W              | 50          |                 | Juniwood      | 4           | N 42 E              | 28          |
| R               | N. Oak        | 20          | S 13 E              | 42          | 24.19           | N. Oak        | 7           | N 29 W              | 20          |
|                 | do            | 16          | S 78 W              | 47          |                 | Hickory       | 17          | S 15 1/2 E          | 20          |
| S               | Hickory       | 17          | N 47 1/2 E          | 16          | 18.19           | N. Oak        | 30          | S 13 1/2 W          | 17          |
|                 | N. Oak        | 7           | S 35 W              | 19          |                 | do            | 24          | N 48 W              | 20          |
| T               | N. Oak        | 18          | S 25 E              | 24          | 18.20           | N. Oak        | 36          | S 12 1/2 E          | 27          |
|                 | do            | 20          | N 11 1/2 W          | 34          |                 | N. Oak        | 5           | N 62 1/2 W          | 25          |
| U               |               |             |                     |             | 1 & 2           | N. Oak        | 16          | S 32 E              | 24          |
| V               | N. Oak        | 16          | S 84 1/2 W          | 15          |                 | do            | 5           | N 20 E              | 12          |
|                 | Maple         | 15          | N 75 1/2 E          | 30          | 1.2             | Cherry        | 8           | S 27 E              | 16          |
| W               | N. Oak        | 30          | N 40 W              | 4           |                 | Maple         | 6           | N 69 W              | 13          |
|                 | Lynn          | 20          | S 20 W              | 25          | 17.20           | Lynn          | 14          | N 32 1/2 E          | 10          |
| X               | Maple         | 14          | S 33 W              | 17          |                 | Elm           | 10          | S 84 W              | 21          |
|                 | N. Oak        | 12          | S 72 1/2 E          | 30          | 20.23           | Hickory       | 8           | N 8 E               | 28          |
| Y               | do            | 20          | N 63 W              | 17          |                 | Lynn          | 14          | S 21 1/2 E          | 42          |
|                 | Maple         | 5           | S 53 1/2 E          | 16          | 25.26.27.28     | Hickory       | 14          | S 68 E              | 21          |
| Z               | Maple         | 15          | S 33 E              | 8           |                 | do            | 14          | S 88 1/2 W          | 12          |
|                 | N. Oak        | 12          | N 23 W              | 17          | 11.12.25.26     | Juniwood      | 8           | N 65 1/2 W          | 20          |
| aa              | do            | 10          | S 57 E              | 13          |                 | do            | 7           | S 59 E              | 10          |
|                 | Hickory       | 10          | N 47 E              | 25          | 24.25.28.29     | N. Oak        | 34          | N 64 1/2 E          | 7           |
| ab              | do            | 11          | N 27 W              | 13          |                 | do            | 40          | N 46 W              | 33          |
|                 | Hickory       | 10          | N 47 E              | 25          | 12.13.24.25     | Hickory       | 12          | N 43 W              | 27          |
|                 | do            | 11          | N 27 W              | 13          |                 | do            | 12          | S 38 E              | 40          |
|                 | Hickory       | 10          | N 47 E              | 25          | 23.24.29.30     | N. Oak        | 38          | N 39 W              | 26          |
|                 | do            | 11          | N 27 W              | 13          |                 | Maple         | 6           | S 25 W              | 25          |
|                 | Hickory       | 10          | N 47 E              | 25          | 13.14.23.24     | Maple         | 12          | S 35 E              | 16          |
|                 | do            | 11          | N 27 W              | 13          |                 | Dojun         | 6           | N 84 1/2 W          | 18          |
|                 | Hickory       | 10          | N 47 E              | 25          | 22.23.30.31     | N. Oak        | 30          | S 63 E              | 30          |
|                 | do            | 11          | N 27 W              | 13          |                 | Maple         | 12          | N 71 W              | 48          |
|                 | Hickory       | 10          | N 47 E              | 25          | 14.15.22.23     | N. Oak        | 48          | N 67 W              | 35          |
|                 | do            | 11          | N 27 W              | 13          |                 | Sugar         | 10          | N 11 W              | 29          |
|                 | Hickory       | 10          | N 47 E              | 25          | 21.22.31.32     | N. Oak        | 24          | N 95 E              | 17          |
|                 | do            | 11          | N 27 W              | 13          |                 | do            | 26          | N 22 W              | 44          |
|                 | Hickory       | 10          | N 47 E              | 25          | 15.16.21.22     | Hickory       | 12          | S 63 W              | 14          |
|                 | do            | 11          | N 27 W              | 13          |                 | N. Oak        | 4           | N 59 1/2 E          | 20          |
|                 | Hickory       | 10          | N 47 E              | 25          | 20.21.32.33     | Maple         | 5           | S 60 1/2 E          | 18          |
|                 | do            | 11          | N 27 W              | 13          |                 | Elm           | 5           | S 61 W              | 7           |
|                 | Hickory       | 10          | N 47 E              | 25          | 16.17.20.21     | N. Oak        | 14          | S 89 1/2 E          | 30          |
|                 | do            | 11          | N 27 W              | 13          |                 | do            | 8           | S 73 W              | 44          |



Section N<sup>o</sup> III, Township N<sup>o</sup> IX, Range N<sup>o</sup> V. Surveyed by Alex<sup>r</sup> Holmes. 1816

Description of the Soil on the Interior Lot lines.

| Section | Quality, &c.   | Section | Quality, &c.                  |
|---------|--|---------|-------------------------------|
| 8 & 9   | Stony Oak & Chesnut land                                     | 2 & 3   | Poor land - Oak, Chesnut &c.  |
| 7 & 10  | Pretty good Oak land   | 14 & 15 | Poor Stony Oak land           |
| 6 & 11  | Same   | 18 & 19 | Pretty good Oak land          |
| 5 & 12  | Stony land - Oak, Chesnut &c.                                | 20 & 21 | Same                          |
| 4 & 13  | Same   | 24 & 25 | Same                          |
| 3 & 14  | Same   | 25 & 26 | Same                          |
| 2 & 15  | Pretty good Oak & Chesnut land                               | 29 & 30 | Same                          |
| 1 & 16  | Same   | 19 & 20 | Same                          |
| 9 & 24  | Stony Oak land   | 13 & 14 | Stony Oak land                |
| 10 & 23 | Pretty good land - Oak, Chesnut &c.                          | 3 & 4   | Same                          |
| 11 & 22 | Same   | 17 & 18 | Stony land - Oak, Chesnut &c. |
| 12 & 21 | Unclear land good soil - Oak, Chesnut &c.                    | 12 & 13 | Stony Oak land                |
| 13 & 20 | Same   | 20 & 21 | Good land - Oak               |
| 14 & 19 | Pretty good Oak land   | 28 & 29 | Stony Oak land                |
| 15 & 18 | Stony land - Oak, Chesnut &c.                                | 26 & 27 | Pretty good Oak land          |
| 16 & 17 | Same   | 37 & 38 | Stony land - Oak, Chesnut &c. |
| 17 & 16 | Same   | 27 & 28 | Same                          |
| 18 & 15 | Same   | 21 & 22 | Good Oak land                 |
| 19 & 14 | Land generally of a middling good quality - Oak, Chesnut &c. | 11 & 12 | Stony Oak land                |
| 20 & 13 | Same   | 5 & 6   | Same                          |
| 21 & 12 | Same   | 6 & 7   | Unclear Oak land              |
| 22 & 11 | Same   | 10 & 11 | Thin Oak land                 |
| 23 & 10 | Same   | 22 & 23 | Good Oak land                 |
| 24 & 9  | Same   | 26 & 27 | Same                          |
| 25 & 8  | Generally good land - Oak, Chesnut &c.                       | 38 & 39 | Stony Oak land                |
| 26 & 7  | Same   | 29 & 30 | Good Oak land                 |
| 27 & 6  | Same   | 25 & 26 | Same                          |
| 28 & 5  | Stony land - Oak, Chesnut &c.                                | 23 & 24 | Same                          |
| 29 & 4  | Same   | 9 & 10  | Stony Oak land                |
| 30 & 3  | Same   | 7 & 8   | Pretty good Oak land          |
| 31 & 2  | Same   |         |                               |
| 32 & 1  | Pretty good Oak land   |         |                               |
| 33 & 34 | Same   |         |                               |
| 31 & 38 | Same   |         |                               |
| 17 & 18 | Poor land - Chesnut &c.                                      |         |                               |
| 15 & 16 | Same   |         |                               |
| 1 & 2   | Same   |         |                               |

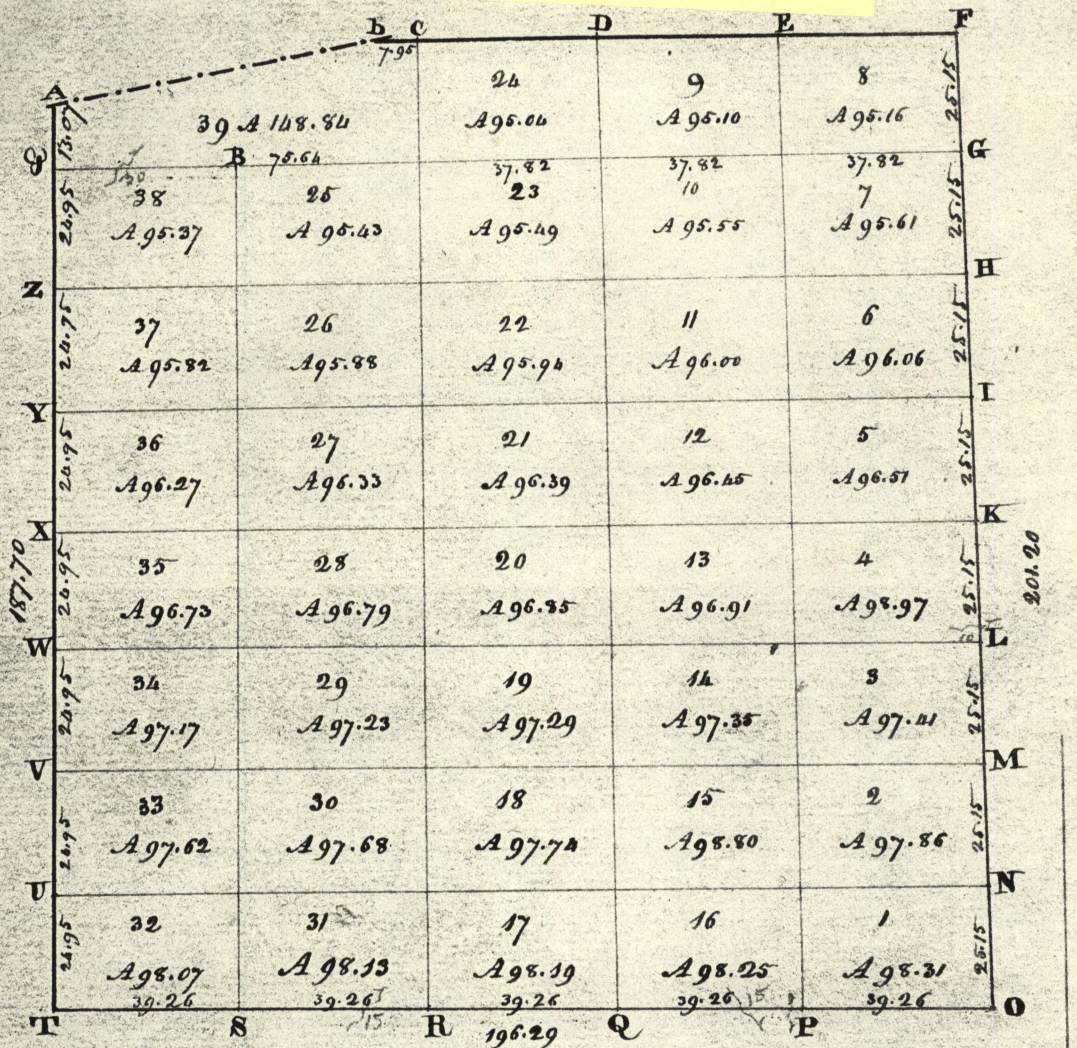
Section No. 3, Township No. 7, Range No. 5,

Interior Corners of Lots described

Exterior Corners

| Exterior Corners | Feet, diam. | Feet, diam. | Feet, diam. | Feet, diam.  | Course of Lots | Feet, diam. | Feet, diam. | Feet, diam. | Feet, diam. |
|------------------|-------------|-------------|-------------|--|----------------|-------------|-------------|-------------|-------------|
| A Hickory        | 12          | S 9 N       | 18          | A to B. Silly Stony Oak lands.                               | 1. 2. 15. 16   | Hickory     | 15          | S 3 N       | 22          |
| B Chestnut       | 12          | N 23 E      | 54          | B to C. Pretty good oak lands.                               | 2. 3. 14. 15   | Hickory     | 24          | N 30 N      | 20          |
| C Hickory        | 8           | N 67 N      | 19          | C to D. Same   | 3. 4. 13. 14   | Chestnut    | 18          | S 22 N      | 13          |
| D Sugar          | 15          | S 22 E      | 15          | D to E. Silly Oak & Chestnut lands                           | 4. 5. 12. 13   | Hickory     | 12          | N 77 E      | 7           |
| E Hickory        | 18          | N 20 E      | 22          | E to F. Same   | 5. 6. 11. 12   | Maple       | 12          | S 36 N      | 4           |
| F Hickory        | 15          | S 23 N      | 32          | F to G. Land containing Oak & Silly Stony Oak lands.         | 6. 7. 10. 11   | Hickory     | 12          | N 63 E      | 7           |
| G Hickory        | 18          | N 63 N      | 18          | G to H. Land containing quality Oak & Silly Stony Oak lands. | 7. 8. 9. 10    | Sugar       | 8           | S 47 E      | 7           |
| H Hickory        | 20          | S 72 E      | 38          | H to I. Land containing quality Oak & Silly Stony Oak lands. | 9. 10. 23. 24  | Hickory     | 9           | N 43 N      | 11          |
| I Hickory        | 24          | N 19 N      | 28          | I to J. Land containing Silly & Stony Oak & Chestnut         | 10. 11. 22. 23 | Hickory     | 15          | N 43 N      | 19          |
| J Hickory        | 12          | S 10 E      | 16          | J to K. Same   | 11. 12. 21. 22 | Hickory     | 15          | S 50 E      | 38          |
| K Hickory        | 18          | N 46 N      | 21          | K to L. Same   | 12. 13. 20. 21 | Hickory     | 18          | S 59 N      | 22          |
| L Hickory        | 12          | S 33 E      | 50          | L to M. Silly Stony lands                                    | 13. 14. 19. 20 | Hickory     | 15          | N 82 E      | 22          |
| M Hickory        | 12          | S 31 N      | 60          | M to N. Same   | 14. 15. 18. 19 | Hickory     | 36          | N 4 N       | 22          |
| N Hickory        | 12          | N 35 E      | 45          | N to O. Same   | 15. 16. 17. 18 | Hickory     | 24          | S 2 E       | 45          |
| O Hickory        | 18          | N 14 E      | 66          | O to P. Same   | 17. 18. 31. 32 | Hickory     | 6           | S 40 N      | 2           |
| P Hickory        | 24          | S 12 N      | 34          | P to Q. Same   | 18. 19. 30. 31 | Hickory     | 6           | N 72 E      | 18          |
| Q Hickory        | 12          | N 3 N       | 45          | Q to R. Same   | 19. 20. 29. 30 | Hickory     | 6           | N 72 E      | 18          |
| R Hickory        | 15          | S 22 N      | 7           | R to S. Same   | 20. 21. 28. 29 | Hickory     | 15          | S 72 E      | 29          |
| S Hickory        | 18          | S 41 N      | 8           | S to T. Same   | 21. 22. 27. 28 | Hickory     | 20          | N 68 N      | 23          |
| T Hickory        | 8           | N 38 E      | 35          | T to U. Same   | 22. 23. 26. 27 | Hickory     | 12          | N 51 E      | 12          |
| U Hickory        | 15          | N 77 N      | 5           | U to V. Same   | 23. 24. 25. 26 | Hickory     | 18          | S 45 N      | 12          |
| V Hickory        | 8           | N 77 N      | 5           | V to W. Same   | 24. 25. 34. 35 | Hickory     | 20          | S 18 N      | 22          |
| W Hickory        | 36          | S 14 E      | 33          | W to X. Same   | 25. 26. 33. 34 | Hickory     | 12          | N 50 E      | 38          |
| X Hickory        | 20          | S 60 E      | 28          | X to Y. Same   | 26. 27. 36. 37 | Hickory     | 20          | S 87 E      | 25          |
| Y Hickory        | 20          | N 77 N      | 42          | Y to Z. Same   | 27. 28. 37. 38 | Hickory     | 12          | N 87 N      | 29          |
| Z Hickory        | 8           | N 35 N      | 17          | Z to A. Same   | 28. 29. 36. 37 | Hickory     | 24          | S 55 N      | 36          |
| A Hickory        | 6           | S 13 E      | 32          | A to B. Same   | 29. 30. 35. 36 | Hickory     | 20          | N 11 N      | 36          |
| B Hickory        | 16          | N 58 N      | 24          | B to C. Same   | 30. 31. 34. 35 | Hickory     | 18          | S 17 N      | 100         |
| C Hickory        | 12          | N 62 E      | 67          | C to D. Same   | 31. 32. 33. 34 | Hickory     | 18          | S 17 N      | 20          |
| D Hickory        | 15          | N 18 N      | 38          | D to E. Same   | 32. 33. 34. 35 | Hickory     | 24          | S 35 N      | 30          |
| E Hickory        | 12          | S 35 E      | 39          | E to F. Same   | 33. 34. 35. 36 | Hickory     | 24          | S 58 N      | 31          |
| F Hickory        | 18          | N 15 E      | 13          | F to G. Same   | 34. 35. 36. 37 | Hickory     | 18          | N 68 E      | 31          |
| G Hickory        | 15          | N 36 N      | 32          | G to H. Same   | 35. 36. 37. 38 | Hickory     | 20          | N 74 N      | 41          |
| H Hickory        | 12          | S 38 N      | 5           | H to I. Same   | 36. 37. 38. 39 | Hickory     | 20          | N 79 E      | 41          |
| I Hickory        | 20          | N 39 E      | 36          | I to J. Same   | 37. 38. 39. 40 | Hickory     | 12          | N 52 N      | 19          |
| J Hickory        | 24          | N 2 N       | 10          | J to K. Same   | 38. 39. 40. 41 | Hickory     | 6           | S 32 E      | 27          |
| K Hickory        | 40          | S 60 E      | 29          | K to L. Same   | 39. 40. 41. 42 | Hickory     | 6           | S 32 E      | 27          |
| L Hickory        | 24          | S 49 N      | 18          | L to M. Same   | 40. 41. 42. 43 | Hickory     | 12          | S 71 E      | 8           |
| M Hickory        | 20          | N 23 E      | 24          | M to N. Same   | 41. 42. 43. 44 | Hickory     | 48          | N 71 N      | 7           |
| N Hickory        | 18          | N 35 E      | 38          | N to O. Same   | 42. 43. 44. 45 | Hickory     | 15          | S 26 N      | 37          |
| O Hickory        | 18          | S 30 N      | 30          | O to P. Same   | 43. 44. 45. 46 | Hickory     | 18          | N 19 E      | 29          |
| P Hickory        | 18          | N 64 E      | 12          | P to Q. Same   | 44. 45. 46. 47 | Hickory     | 36          | S 26 E      | ...         |
| Q Hickory        | 8           | N 80 N      | 19          | Q to R. Same   | 45. 46. 47. 48 | Hickory     | 18          | N 15 N      | ...         |
| R Hickory        | 40          | S 60 E      | 16          | R to S. Same   | 46. 47. 48. 49 | Hickory     | 15          | N 32 E      | 7           |
| S Hickory        | 12          | N 35 N      | 36          | S to T. Same   | 47. 48. 49. 50 | Hickory     | 8           | S 15 N      | 27          |
| T Hickory        | 12          | S 35 N      | 30          | T to U. Same   | 48. 49. 50. 51 | Hickory     | 20          | S 75 N      | 20          |
| U Hickory        | 20          | S 70 N      | 33          | U to V. Same   | 49. 50. 51. 52 | Hickory     | 12          | N 48 E      | 44          |
| V Hickory        | 12          | S 28 N      | 30          | V to W. Same   | 50. 51. 52. 53 | Hickory     | 12          | S 29 N      | 37          |
| W Hickory        | 15          | N 30 E      | 4           | W to X. Same   | 51. 52. 53. 54 | Hickory     | 12          | N 60 E      | 37          |
| X Hickory        | 18          | S 70 N      | 54          | X to Y. Same   | 52. 53. 54. 55 | Hickory     | 12          | S 20 E      | 37          |
| Y Hickory        | 15          | N 68 E      | 20          | Y to Z. Same   | 53. 54. 55. 56 | Hickory     | 18          | N 13 N      | 30          |
| Z Hickory        | 18          | N 26 E      | 27          | Z to A. Same   | 54. 55. 56. 57 | Hickory     | 15          | N 38 E      | 30          |
| A Hickory        | 18          | S 23 N      | 63          | A to B. Same   | 55. 56. 57. 58 | Hickory     | ...         | S 22 N      | 17          |
|                  |             |             |             |  |                | Hickory     | 18          | S 79 N      | 20          |
|                  |             |             |             |  |                | Hickory     | 36          | N 84 E      | 22          |
|                  |             |             |             |  |                | Hickory     | 20          | N 57 N      | 11          |
|                  |             |             |             |  |                | Hickory     | 24          | S 54 E      | 28          |
|                  |             |             |             |  |                | Hickory     | 12          | S 15 E      | 32          |
|                  |             |             |             |  |                | Hickory     | 18          | N 68 N      | 24          |

T9 R7 2 1/4



Scale of forty Chains to an Inch

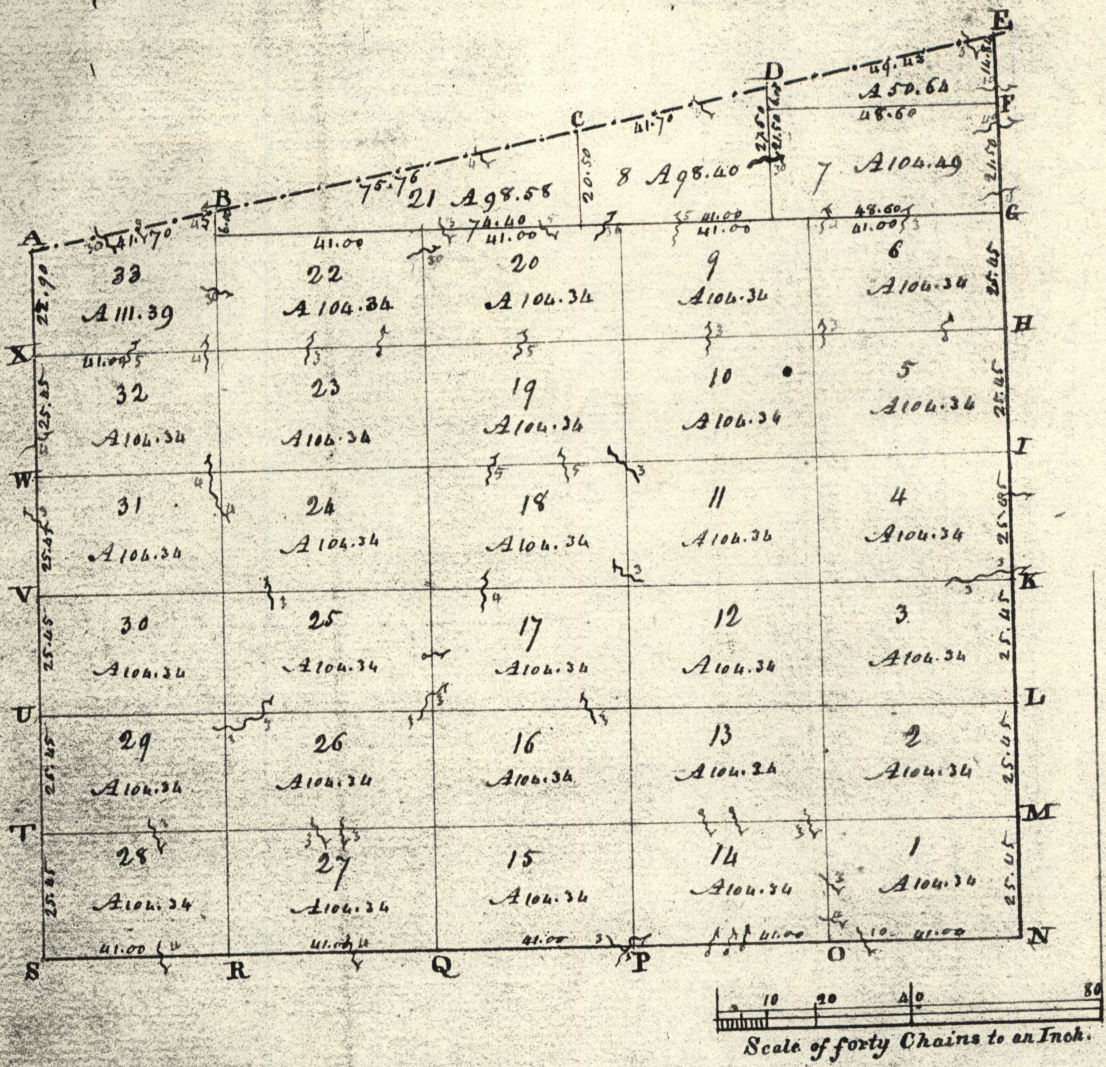
Section N<sup>o</sup> II, Township N<sup>o</sup> IX, Range N<sup>o</sup> VII. Surveyed by W<sup>m</sup> Harris, 1833.



Section No. 2, Township No. 9, Range No. 7,

Anterior corners of Lots described

| Anterior corners | Denning trees | Inches diam. | Courses they bear | Links dist. | Corners of Lots | Denning trees | Inches diam. | Courses they bear | Links dist. |
|------------------|---------------|--------------|-------------------|-------------|-----------------|---------------|--------------|-------------------|-------------|
|                  |               |              |                   |             | 1. 2. 15. 16    | Elm           | 5            | N 33 W 12         |             |
|                  |               |              |                   |             |                 | Sycamore      | 8            | N 80 E 30         |             |
|                  |               |              |                   |             | 2. 3. 4. 15     | Chesnut       | 8            | S 26 E 33         |             |
|                  |               |              |                   |             |                 | R. Oak        | 14           | N 3 E 24          |             |
| A                |               |              |                   |             |                 |               |              |                   |             |
| B                | W. Oak        | 14           | Corner            |             | 3. 4. 13. 14    | Dogwood       | 6            | Corner            |             |
|                  |               |              |                   |             |                 | W. Oak        | 30           | S 22 N 28         |             |
| C                | W. Oak        | 8            | S 51 E 22         |             | 4. 5. 12. 13    | Dogwood       | 3            | Corner            |             |
|                  | Sycamore      | 7            | N 40 N 33         |             |                 | W. Oak        | 30           | N 53 E 11         |             |
| D                | W. Oak        | 10           | S 75 E 11         |             | 5. 6. 11. 12    | do            | 15           | S 43 N 12         |             |
|                  | Dogwood       | 5            | S 81 N 10         |             |                 | Maple         | 12           | N 16 W 26         |             |
| E                | Sycamore      | 9            | Corner            |             | 6. 7. 10. 11    | Dogwood       | 7            | N 7 N 9           |             |
|                  |               |              |                   |             |                 | Sycamore      | 14           | N 53 N 13         |             |
| F                |               |              |                   |             | 7. 8. 9. 10     | W. Oak        | 6            | S 15 E 6          |             |
|                  |               |              |                   |             |                 | Lynn          | 6            | S 74 N 24         |             |
| G                | Ironwood      | 6            | S 15 N 22         |             | 9. 10. 23. 24   | Sycamore      | 18           | S 54 E 28         |             |
|                  | do            | 7            | N 31 E 19         |             |                 | R. Oak        | 16           | S 42 N 10         |             |
| H                | Sycamore      | 12           | N 24 E 22         |             | 10. 11. 22. 23  | W. Oak        | 13           | N 46 N 23         |             |
|                  | Dogwood       | 6            | S 29 E 10         |             |                 | W. Oak        | 5            | N 6 - 5           |             |
| I                | Maple         | 11           | S 48 N 27         |             | 11. 12. 21. 22  | Dogwood       | 27           | S 50 W 40         |             |
|                  | W. Oak        | 14           | N 11 E 24         |             |                 | W. Oak        | 7            | Corner            |             |
| J                | Sycamore      | 12           | N 81 E 21         |             | 12. 13. 20. 21  | Dogwood       | 8            | N 34 N 15         |             |
|                  | do            | 10           | S 20 E 28         |             |                 | do            | 7            | S 15 N 35         |             |
| K                | Ironwood      | 3            | Corner            |             | 13. 14. 19. 20  | Sycamore      | 8            | N 26 E 23         |             |
|                  | W. Oak        | 30           | N 85 N 30         |             |                 | R. Oak        | 8            | S 64 E 16         |             |
| L                | Sycamore      | 11           | N 86 N 13         |             | 14. 15. 18. 19  | Sycamore      | 18           | N 39 N 37         |             |
|                  | Chesnut       | 8            | S 86 E 18         |             |                 | W. Oak        | 13           | S 56 N 26         |             |
| M                | W. Walnut     | 7            | S 80 N 10         |             | 15. 16. 17. 18  | W. Oak        | 14           | N 34 E 24         |             |
|                  | R. Walnut     | 4            | N 73 E 37         |             |                 | do            | 6            | N 33 N 17         |             |
| N                |               |              |                   |             | 17. 18. 20. 31  | Ironwood      | 4            | S 75 N 14         |             |
|                  |               |              |                   |             |                 | do            | 13           | S 22 E 14         |             |
| O                | Sugar         | 14           | N 1 N 27          |             | 18. 19. 29. 30  | Sugar         | 10           | N 6 N 25          |             |
|                  | Black         | 15           | N 87 N 15         |             |                 | Sycamore      | 17           | N 73 E 21         |             |
| P                | Dogwood       | 6            | Corner            |             | 19. 20. 28. 29  | W. Oak        | 18           | S 36 N 29         |             |
|                  | W. Oak        | 20           | N 17 E 24         |             |                 | do            | 10           | N 6 N 13          |             |
| Q                | Ash           | 5            | N 16 N 13         |             | 20. 21. 27. 28  | Chesnut       | 8            | S 16 E 13         |             |
|                  | W. Oak        | 27           | S 5 E 27          |             |                 | do            | 5            | S 50 N 4          |             |
| R                | do            | 30           | S 73 N 19         |             | 21. 22. 26. 27  | Dogwood       | 8            | S 5 E 12          |             |
|                  | Sycamore      | 5            | S 82 E 20         |             |                 | Ash           | 30           | N 34 N 8          |             |
| S                |               |              |                   |             | 22. 23. 25. 26  | W. Oak        | 12           | N 89 E 15         |             |
|                  |               |              |                   |             |                 | Maple         | 9            | N 65 E 11         |             |
| T                | Lynn          | 9            | N 44 N 8          |             | 23. 24. 28. 30  | Ironwood      | 5            | N 27 N 18         |             |
|                  | W. Oak        | 15           | S 22 E 19         |             |                 | Dogwood       | 10           | N 58 N 37         |             |
| U                | R. Oak        | 13           | N 37 E 15         |             | 25. 26. 27. 28  | Sycamore      | 10           | N 23 E 16         |             |
|                  | W. Oak        | 10           | S 23 E 27         |             |                 | W. Oak        | 6            | Corner            |             |
| V                | Sycamore      | 5            | S 15 N 4          |             | 26. 27. 36. 37  | Dogwood       | 18           | S 10 N 12         |             |
|                  | Dogwood       | 6            | N 49 E 16         |             |                 | W. Oak        | 6            | S 61 N 21         |             |
| W                | W. Oak        | 6            | S 66 E 23         |             | 27. 28. 35. 36  | Sycamore      | 12           | N 43 E 12         |             |
|                  | do            | 14           | S 12 E 29         |             |                 | R. Oak        | 16           | S 63 E 30         |             |
| X                | W. Oak        | 27           | N 30 E 42         |             | 28. 29. 34. 35  | W. Oak        | 20           | N 56 N 26         |             |
|                  | do            | 12           | S 14 E 37         |             |                 | do            | 9            | S 32 E 41         |             |
| Y                | W. Oak        | 11           | S 39 E 31         |             | 29. 30. 33. 34  | W. Oak        | 36           | N 61 N 42         |             |
|                  | do            | 16           | N 19 E 11         |             |                 | do            | 13           | N 35 E 14         |             |
| Z                | do            | 5            | N 87 N 8          |             | 30. 31. 32. 33  | W. Oak        | 12           | N 41 N 33         |             |
|                  | do            | 13           | N 7 E 31          |             |                 | R. Oak        |              |                   |             |
| aa               | Sugar         | 13           | N 7 E 31          |             |                 |               |              |                   |             |
| bb               | Maple         | 9            | Corner            |             |                 |               |              |                   |             |



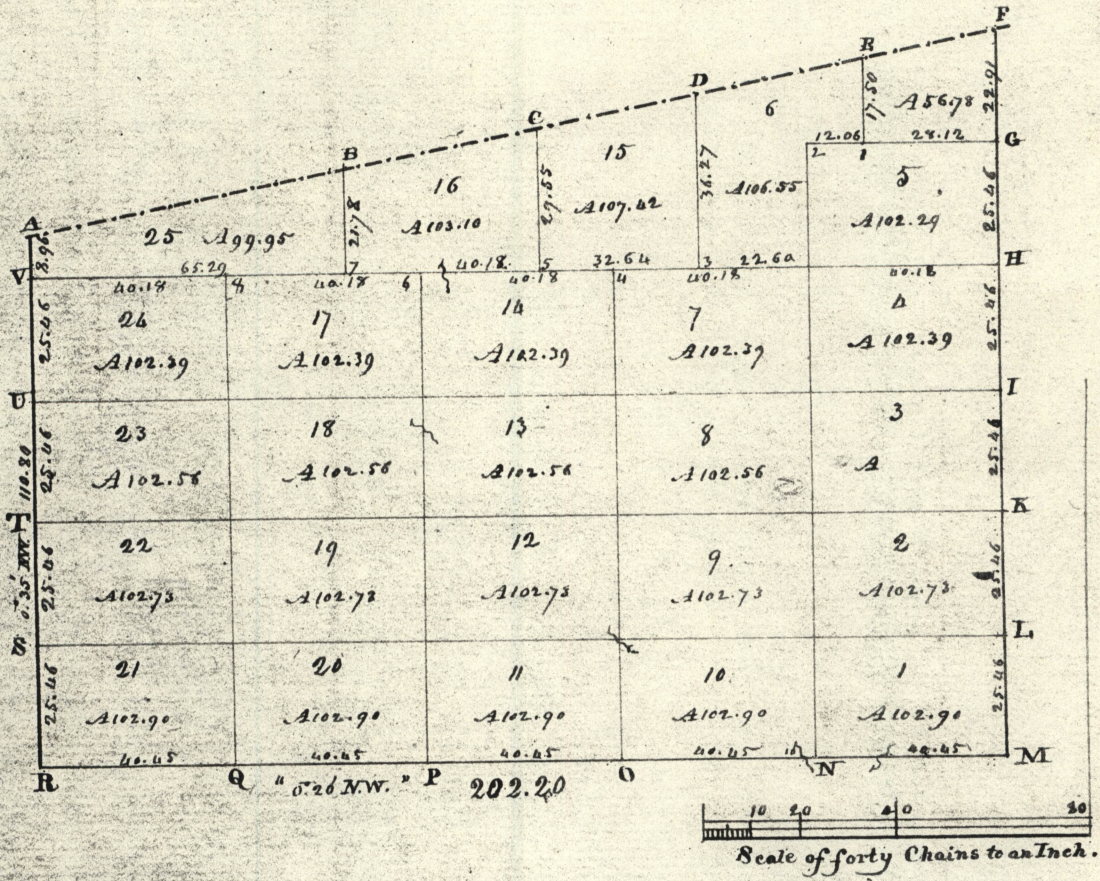
Section N.1, Township N.9, Range N.8. Surveyed by Alex. Holmes. 181

Section N<sup>o</sup>. 1, Township N<sup>o</sup>. 9, Range N<sup>o</sup>. 8,

Anterior Corners of Lots described

| Anterior Corners | Bearing trees | Inchs diam. | Logues they bear | Feet's dist. | Corners of Lots | Bearing trees | Inchs diam. | Courses they bear | Feet's dist. |
|------------------|---------------|-------------|------------------|--------------|-----------------|---------------|-------------|-------------------|--------------|
| A                | Maple         | 12          | Corner           | N 28         | 21.33           | W. Oak        | 36          | N 78              | E 13         |
|                  | W. Oak        | 18          | N 48             | E 28         |                 | do            | 24          | S 62              | E 38         |
|                  | Hickory       | 8           | S 25             | E 21         | 20.21.22        | W. Oak        | 16          | S 42              | N 3          |
| B                |               |             |                  |              |                 | do            | 16          | N 73              | E 16         |
| C                | Dogwood       | 6           | N 58             | N 3          | 6.9             | W. Oak        | 12          | S 10              | E 20         |
|                  | Gum           | 15          | N 86             | E 5          |                 | do            | 12          | N 57              | N 30         |
| D                | Sugar         | 12          | S 71             | E 5          | 7.8.9           | W. Oak        | 10          | N 53              | N 14         |
|                  | W. Oak        | 20          | N 64             | N 13         |                 | do            | 12          | S 25              | N 10         |
| E                | Gum           | 16          | S 39             | E 23         | N. N. 2.7       | Hickory       | 16          | N 25              | E 27         |
|                  | do            | 18          | S 42             | N 47         |                 | W. Oak        | 16          | N 71              | E 14         |
| F                | Sycamore      | 18          | S 29             | E 12         | 7.20            | Sugar         | 12          | N 23              | N 19         |
|                  | Sugar         | 14          | N 32             | N 31         |                 | do            | 10          | S 88              | E 21         |
| G                | W. Oak        | 12          | S 87             | E 14         | 8.21            | Sycamore      | 24          | S 4               | E 23         |
|                  | Ash           | 8           | S 47             | N 20         |                 | do            | 12          | S 31              | N 24         |
| H                | W. Oak        | 36          | N 76             | N 19         | 20.22           | Sugar         | 16          | N 26              | E 52         |
|                  | do            | 6           | N 88             | E 10         |                 | do            | 12          | N 48              | E 16         |
| I                | W. Oak        | 30          | N 50             | E 19         | 5.6.9.10        | W. Oak        | 12          | N 48              | E 16         |
|                  | do            | 20          | S 63             | N 31         |                 | Hickory       | 8           | S 61              | N 32         |
| J                | Beech         | 16          | S 62             | E 21         | 9.10.19.20      | W. Oak        | 18          | S 39              | N 27         |
|                  | Maple         | 16          | N 73             | N 36         |                 | Dogwood       | 4           | N 11              | N 13         |
| L                | W. Oak        | 14          | N 83             | N 24         | 19.20.22.23     | do            | 6           | N 57              | E 8          |
|                  | do            | 12          | S 5              | N 18         |                 | do            | 12          | S 35              | E 15         |
| M                | W. Oak        | 16          | S 24             | N 4          | 22.23.32.33     | W. Oak        | 16          | S 57              | N 12         |
|                  | do            | 24          | N 46             | E 14         |                 | do            | 6           | N 13              | N 23         |
| N                | W. Oak        | 36          | N 25             | E 17         | 4.5.10.11       | Dogwood       | 6           | South             | 4            |
|                  | Gum           | 12          | S 47             | E 25         |                 | Hickory       | 8           | N 13              | N 27         |
| O                | W. Oak        | 24          | N 14             | N 26         | 10.11.18.19     | Ironwood      | 8           | N 54              | N 34         |
|                  | do            | 6           | S 87             | N 16         |                 | Ash           | 18          | S 74              | E 35         |
| P                | Dogwood       | 16          | N 55             | N 20         | 18.19.23.24     | Dogwood       | 7           | N 82              | N 48         |
|                  | Beech         | 15          | S 74             | E 21         |                 | W. Oak        | 12          | S 87              | E 67         |
|                  | do            | 5           | S 33             | N 9          | 23.24.31.32     | Maple         | 12          | S 49              | E 12         |
| Q                | Dogwood       | 14          | N 34             | E 33         |                 | W. Oak        | 8           | N 11              | N 42         |
|                  | do            | 16          | S 21             | N 14         | 26.27.28.29     | W. Oak        | 16          | S 37              | N 25         |
| R                | W. Oak        | 12          | N 4              | E 28         |                 | do            | 16          | N 53              | E 37         |
| S                | do            | 14          | S 11             | E 26         | 15.16.26.27     | W. Oak        | 12          | North             | 25           |
|                  | Gum           | 6           | N 13             | E 36         |                 | Hickory       | 9           | S 67              | N 15         |
| T                | do            | 7           | N                | E 10         | 13.14.15.16     | Beech         | 15          | S 72              | E 28         |
|                  | Hickory       | 12          | S 32             | N 24         |                 | Chesnut       | 30          | N 84              | N 28         |
| U                | W. Oak        | 20          | N 24             | E 17         | 1.2.13.14       | Hickory       | 10          | S 71              | N 11         |
|                  | do            | 18          | S 54             | N 26         |                 | do            | 6           | N 86              | E 14         |
| V                | W. Oak        | 12          | N 72             | E 22         | 25.26.29.30     | Ash           | 8           | S 10              | E 13         |
|                  | Gum           | 10          | S 57             | N 34         |                 | do            | 8           | N 70              | N 30         |
| W                | W. Oak        | 20          | N 75             | E 6          | 16.17.25.26     | W. Oak        | 10          | S 19              | N 5          |
|                  | Dogwood       | 8           | N 62             | N 2          |                 | do            | 24          | N 82              | E 21         |
| X                | Hickory       | 10          | S 88             | N 10         | 12.13.16.17     | Gum           | 12          | S 37              | E 23         |
|                  | Gum           | 14          | N 27             | E 31         |                 | do            | 12          | N 11              | E 16         |
|                  |               |             |                  |              | 2.3.12.13       | W. Oak        | 15          | N 63              | N 21         |
|                  |               |             |                  |              |                 | do            | 14          | S 83              | E 63         |
|                  |               |             |                  |              | 24.25.30.31     | Dogwood       | 6           | N 22              | N 12         |
|                  |               |             |                  |              |                 | Hickory       | 8           | S 52              | E 27         |
|                  |               |             |                  |              | 17.18.24.25     | W. Oak        | 18          | N 35              | E 8          |
|                  |               |             |                  |              |                 | do            | 24          | S 8               | N 35         |
|                  |               |             |                  |              | 15.12.17.18     | W. Oak        | 30          | N 84              | E 38         |
|                  |               |             |                  |              |                 | do            | 30          | N 71              | N 20         |
|                  |               |             |                  |              | 3.4.11.12       | Gum           | 10          | N 54              | N 13         |
|                  |               |             |                  |              |                 | W. Oak        | 15          | S 40              | N 23         |

T 9 R 8 2 1/4



Section N<sup>o</sup> II, Township N<sup>o</sup> IX, Range N<sup>o</sup> VIII. Surveyed by W.<sup>m</sup> Harris, 1811

Section No. 2, Township No. 9, Range No. 8, Interior corners of Lots described.

| Anterior corners. | Bearing trees | Dist. | Bearing trees they bear | Dist. | Anterior corners of lots | Bearing trees | Dist.    | Bearing trees they bear | Dist.      |
|-------------------|---------------|-------|-------------------------|-------|--------------------------|---------------|----------|-------------------------|------------|
| A                 |               |       |                         |       |                          | 1             | Gunw     | 7                       | S 27 W 10  |
| B                 | W. Oak        | 12    | N 34 E                  | 10    |                          | 2             | W. Oak   | 24                      | N 47 W 16  |
|                   | do            | 12    | West                    | 22    |                          |               | Ashe     | 9                       | N 60 W 9   |
| C                 | Bush          | 10    | South                   | 6     |                          | 3             | Nichory  | 9                       | N 83 E 17  |
|                   | do            | 12    | N 18 W                  | 19    |                          |               | do       | 14                      | N 14 E 17  |
| D                 | W. Oak        | 15    | S 82 E                  | 4     |                          | 4             | Dogwood  | 14                      | S 62 E 25  |
|                   | do            | 14    | N 17 W                  | 27    |                          |               | do       | 14                      | S 22 W 4   |
| E                 | W. Oak        | 14    | S 63 W                  | 21    |                          | 5             | Black    | 12                      | N 64 W 31  |
|                   | Nichory       | 9     | N 12 E                  | 19    |                          |               | Gunw     | 8                       | N 17 E 24  |
| F                 |               |       |                         |       |                          | 6             | W. Oak   | 10                      | S 9 E 24   |
|                   |               |       |                         |       |                          |               | W. Oak   | 36                      | N 33 W 34  |
| G                 | Nichory       | 8     | S 89 W                  | 11    |                          | 7             | Chestnut | 9                       | N 21 W 18  |
|                   | Gunw          | 9     | N 25 E                  | 31    |                          |               | W. Oak   | 24                      | S 83 E 8   |
| H                 | Hamwood       | 8     | N 62 W                  | 9     |                          | 8             | Gunw     | 13                      | S 62 W 7   |
|                   | Gunw          | 5     | S 85 E                  | 7     |                          |               |          |                         |            |
| I                 | W. Oak        | 10    | S 27 E                  | 19    |                          | 1.2.9.10      | W. Oak   | 18                      | S 39 E 13  |
|                   | Gunw          | 18    | N 17 W                  | 33    |                          |               | Gunw     | 8                       | North 18   |
| J                 | W. Oak        | 18    | S 53 W                  | 37    |                          | 2.3.8.9       | Gunw     | 18                      | Corner     |
|                   | W. Oak        | 18    | N 21 E                  | 9     |                          |               |          |                         |            |
| L                 | Gunw          | 8     | S 9 E                   | 12    |                          | 3.4.7.8       | Black    | 8                       | N 80 E 22  |
|                   | Nichory       | 9     | N 52 W                  | 16    |                          |               | Ashe     | 12                      | N 69 W 11  |
| M                 |               |       |                         |       |                          | 4.5.6.7       | Nichory  | 9                       | N 86 W 7   |
|                   |               |       |                         |       |                          |               | do       | 7                       | S 48 E 12  |
| N                 | Hamwood       | 5     | N 65 E                  | 8     |                          | 7.8.13.14     | Gunw     | 7                       | S 41 W 12  |
|                   | Gunw          | 10    | S 38 W                  | 20    |                          |               | Nichory  | 5                       | N 35 E 17  |
| O                 | Nichory       | 8     | Corner                  |       |                          | 8.9.12.13     | Gunw     | 8                       | S 21 W 20  |
| P                 | W. Oak        | 9     | S 38 W                  | 31    |                          | 9.10.11.12    | W. Oak   | 16                      | S 78 E 14  |
|                   | Nichory       | 8     | N 13 W                  | 60    |                          |               | Black    | 8                       | West 7     |
| Q                 | Nichory       | 12    | S 32 E                  | 6     |                          | 11.12.19.20   | W. Oak   | 16                      | S 46 E 30  |
|                   | W. Oak        | 20    | S 42 W                  | 41    |                          |               | W. Oak   | 24                      | N 39 W 107 |
| R                 |               |       |                         |       |                          |               | Black    | 10                      | S 4 E 41   |
|                   |               |       |                         |       |                          | 12.13.18.19   | Nichory  | 9                       | N 66 W 31  |
| S                 | W. Oak        | 30    | S 79 E                  | 89    |                          |               | Chestnut | 17                      | S 34 W 28  |
|                   | W. Oak        | 15    | N 74 W                  | 146   |                          | 13.14.17.18   | Black    | 12                      | S 45 E 12  |
| T                 | Chestnut      | 15    | N 26 E                  | 53    |                          |               | W. Oak   | 27                      | N 77 W 22  |
|                   | W. Oak        | 20    | S 56 E                  | 67    |                          | 17.18.23.24   | do       | 30                      | N 85 E 30  |
| U                 | W. Oak        | 18    | N 62 E                  | 43    |                          |               | Gunw     | 13                      | S 67 W 30  |
|                   | Gunw          | 11    | S 35 E                  | 39    |                          | 18.19.22.23   | Chestnut | 13                      | S 11 W 9   |
| V                 | Sugar         | 12    | S 8 W                   | 19    |                          |               | W. Oak   | 18                      | N 18 E 41  |
|                   |               |       |                         |       |                          | 19.20.21.22   | Black    | 24                      | N 57 W 26  |
|                   |               |       |                         |       |                          |               | Gunw     | 14                      | S 69 E 39  |



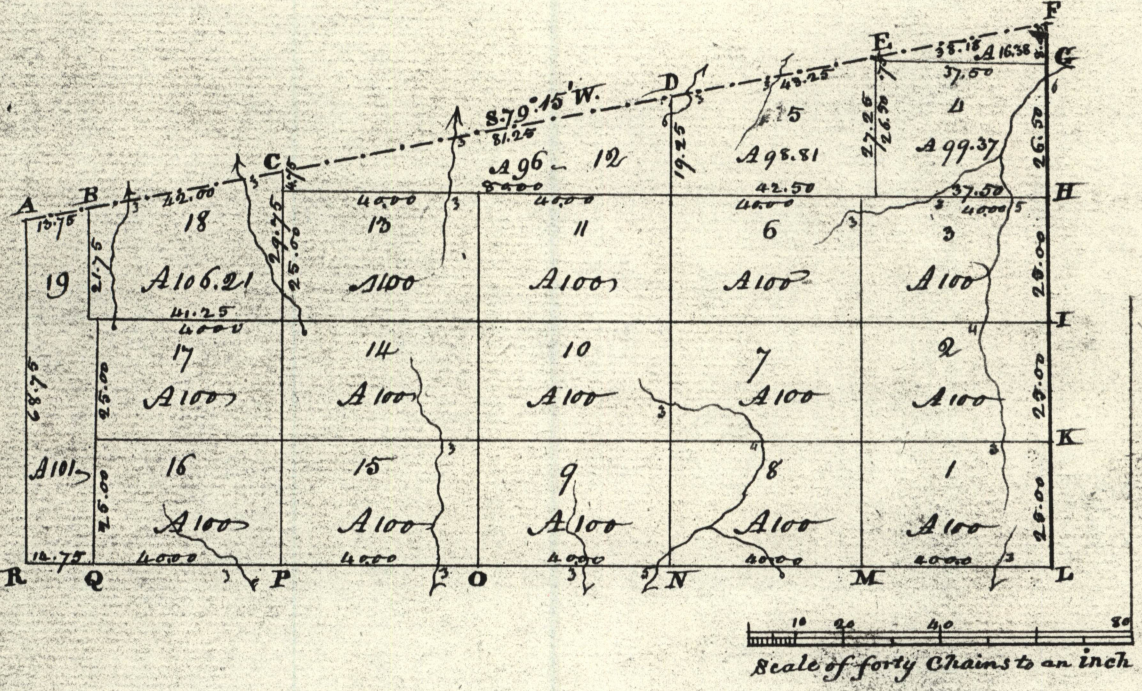
Section No. 3, Township No. 9, Range No. 8,

Anterior Corners of Lots described

| Anterior corners | Bearing trees | Inches diam. | Courses they bear | Links dist. | Corners of Lots | Bearing trees | Inches diam. | Courses they bear | Links dist. |
|------------------|---------------|--------------|-------------------|-------------|-----------------|---------------|--------------|-------------------|-------------|
| A                |               |              |                   |             | 1. 2. 15. 16.   | W. Oak        | 14           | North             | 26          |
| B                |               |              |                   |             |                 | Maple         | 10           | S 27              | W 35        |
| C                |               |              |                   |             | 2. 3. 12. 15.   | Ironwood      | 7            | N 8               | W 4         |
| D                |               |              |                   |             |                 | W. Oak        | 36           | N 30              | E 30        |
| E                |               |              |                   |             | 3. 4. 13. 14.   | Aspen         | 10           | N 48              | W 48        |
| F                |               |              |                   |             |                 | W. Oak        | 18           | N 35              | E 33        |
| G                |               |              |                   |             | 4. 5. 12. 13.   | Maple         | 10           | S 15              | W 31        |
| H                |               |              |                   |             |                 | do            | 10           | S 77              | E 31        |
| I                |               |              |                   |             | 5. 6. 11. 12.   | Hickory       | 13           | S 12              | E 50        |
| J                |               |              |                   |             |                 | W. Oak        | 18           | S 35              | W 33        |
| K                |               |              |                   |             | 6. 7. 10. 11.   | Maple         | 12           | N 14              | W 21        |
| L                |               |              |                   |             |                 | W. Oak        | 13           | N 31              | E 13        |
| M                |               |              |                   |             | 7. 8. 9. 10.    | Hickory       | 6            | N 21              | W 25        |
| N                |               |              |                   |             |                 | W. Oak        | 27           | S 12              | W 25        |
| O                |               |              |                   |             | 9. 10. 23. 24.  | Ironwood      | 9            | N 73              | E 31        |
| P                |               |              |                   |             |                 | Beech         | 9            | N 73              | E 31        |
| Q                |               |              |                   |             | 10. 11. 22. 23. | B. Walnut     | 8            | N 1               | W 54        |
| R                |               |              |                   |             |                 | Dogwood       | 8            | S 24              | W 2         |
| S                |               |              |                   |             | 11. 12. 21. 22. | Hickory       | 10           | S 37              | W 33        |
| T                |               |              |                   |             |                 | do            | 11           | N 35              | E 37        |
| U                |               |              |                   |             | 12. 13. 20. 21. | Ironwood      | 8            | N 39              | W 22        |
| V                |               |              |                   |             |                 | W. Oak        | 9            | N 17              | E 23        |
| W                |               |              |                   |             | 13. 14. 19. 20. | do            | 27           | S 29              | E 69        |
| X                |               |              |                   |             |                 | Hickory       | 8            | N 36              | E 22        |
| Y                |               |              |                   |             | 14. 15. 18. 19. | Elm           | 6            | N 42              | W 25        |
| Z                |               |              |                   |             |                 | W. Oak        | 15           | S 45              | E 19        |
| aa               |               |              |                   |             | 15. 16. 17. 18. | W. Oak        | 14           | S 35              | W 24        |
| bb               |               |              |                   |             |                 | do            | 13           | N 30              | E 46        |
| cc               |               |              |                   |             | 17. 18. 31. 32. | W. Oak        | 15           | S 33              | E 25        |
| dd               |               |              |                   |             |                 | Chesnut       | 10           | S 79              | W 13        |
| ee               |               |              |                   |             | 18. 19. 20. 21. | Hickory       | 6            | N 26              | W 24        |
| ff               |               |              |                   |             |                 | Chesnut       | 27           | N 68              | E 37        |
| gg               |               |              |                   |             | 19. 20. 29. 30. | W. Oak        | 12           | N 45              | E 25        |
| hh               |               |              |                   |             |                 | W. Oak        | 12           | S 46              | E 27        |
| ii               |               |              |                   |             | 20. 21. 28. 29. | Chesnut       | 10           | N 58              | E 5         |
| jj               |               |              |                   |             |                 | do            | 16           | N 43              | W 21        |
| kk               |               |              |                   |             | 21. 22. 27. 28. | W. Oak        | 12           | S 37              | E 35        |
| ll               |               |              |                   |             |                 | do            | 14           | S 44              | W 50        |
| mm               |               |              |                   |             | 22. 23. 26. 27. | W. Oak        | 24           | S 28              | W 61        |
| nn               |               |              |                   |             |                 | Hickory       | 9            | N 22              | W 22        |
| oo               |               |              |                   |             | 23. 24. 25. 26. | W. Oak        | 10           | N 67              | E 8         |
| pp               |               |              |                   |             |                 | W. Oak        | 10           | S 78              | W 32        |
| qq               |               |              |                   |             | 25. 26. 39. 40. | Elm           | 11           | N 18              | E 16        |
| rr               |               |              |                   |             |                 | W. Oak        | 7            | S 30              | W 25        |
| ss               |               |              |                   |             | 26. 27. 38. 39. | W. Oak        | 18           | S 28              | E 25        |
| tt               |               |              |                   |             |                 | Beech         | 12           | North             | 56          |
| uu               |               |              |                   |             | 27. 28. 37. 38. | Hickory       | 9            | N 62              | W 3         |
| vv               |               |              |                   |             |                 | W. Oak        | 9            | S 56              | E 27        |
| ww               |               |              |                   |             | 28. 29. 36. 36. | Dogwood       | 5            | N 68              | E 18        |
| xx               |               |              |                   |             |                 | W. Oak        | 24           | S 8               | W 18        |
| yy               |               |              |                   |             | 29. 30. 35. 36. | do            | 12           | N 70              | E 10        |
| zz               |               |              |                   |             |                 | Dogwood       | 5            | S 28              | E 26        |
| aaa              |               |              |                   |             | 30. 31. 34. 35. | Maple         | 10           | North             | 5           |
| bbb              |               |              |                   |             |                 | Elm           | 6            | N 33              | E 18        |
| ccc              |               |              |                   |             | 31. 32. 33. 34. | W. Oak        | 10           | S 7               | E 27        |
| ddd              |               |              |                   |             |                 | do            | 20           | N 57              | E 31        |

T9 R9 1/4

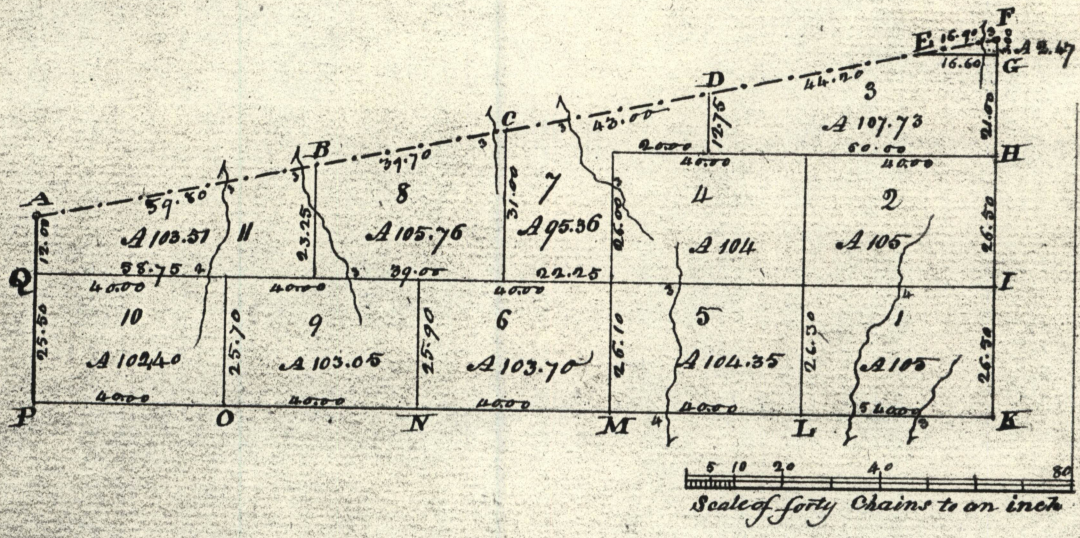
①



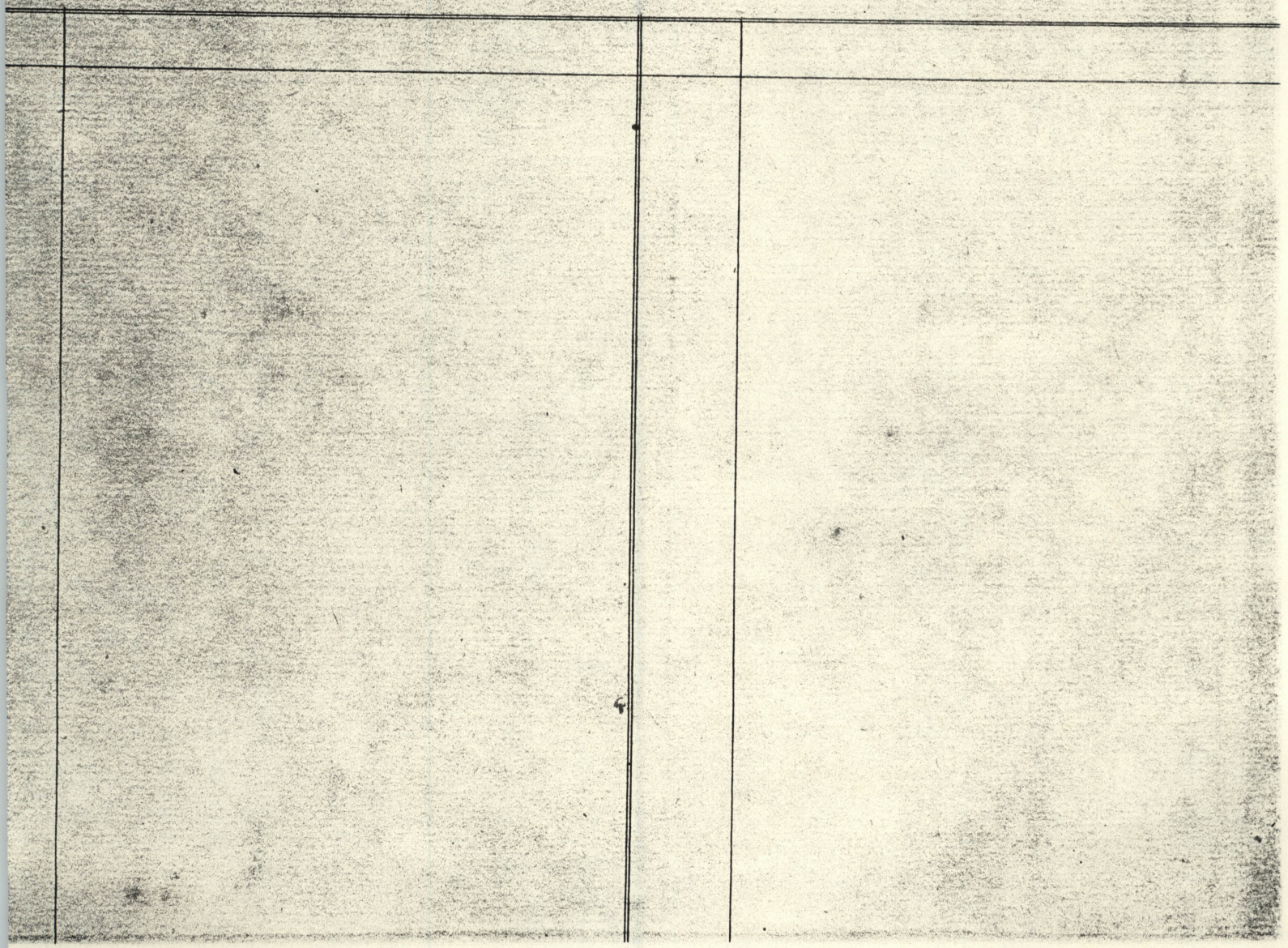
Section N.º I, Township N.º IX, Range N.º IX. Surveyed by A. Holmes, 1818.

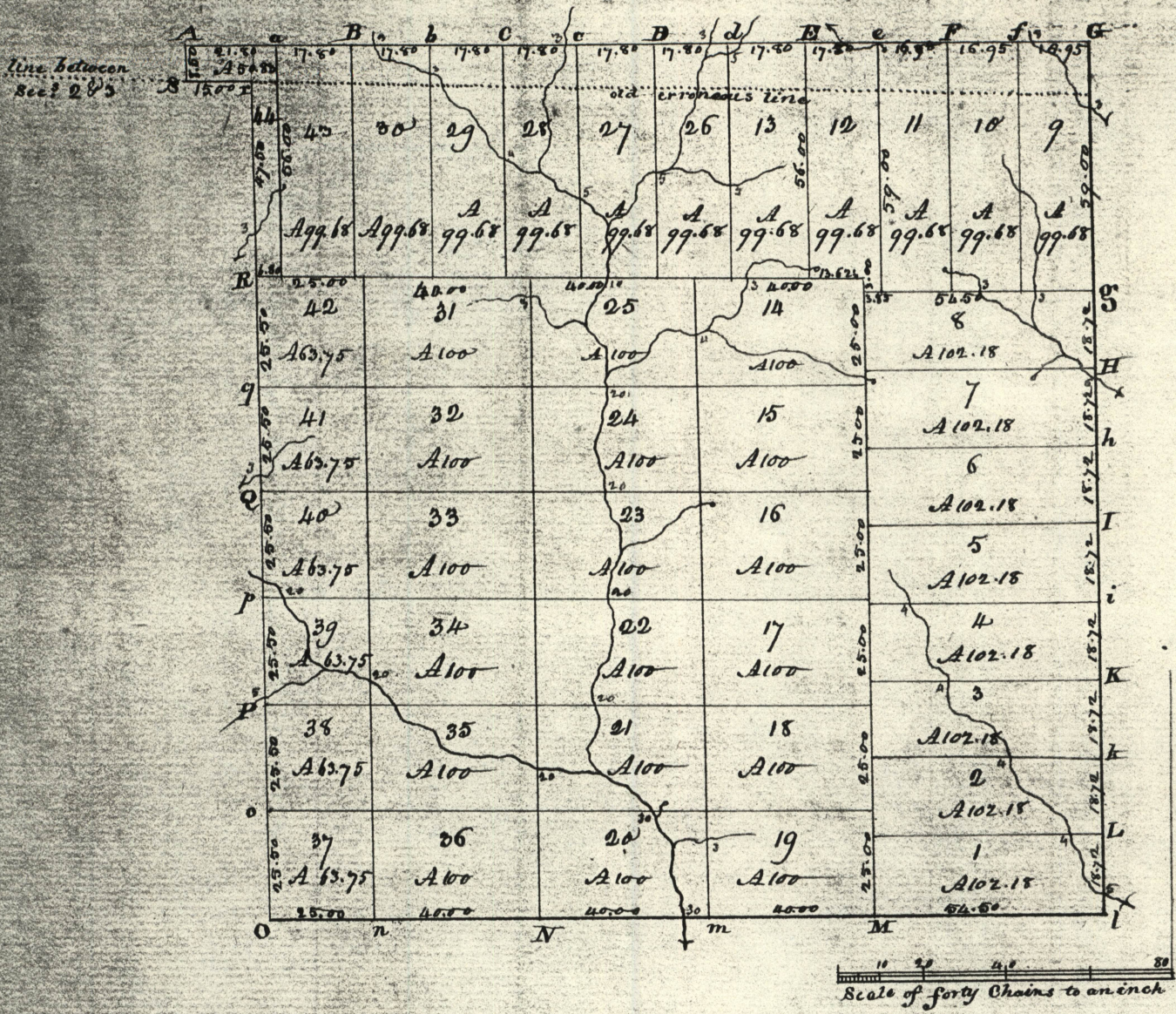


T9-R9-2 1/4



Section N:II, Township N:IX, Range N:IX. Surveyed by Alex. Holmes, 1816



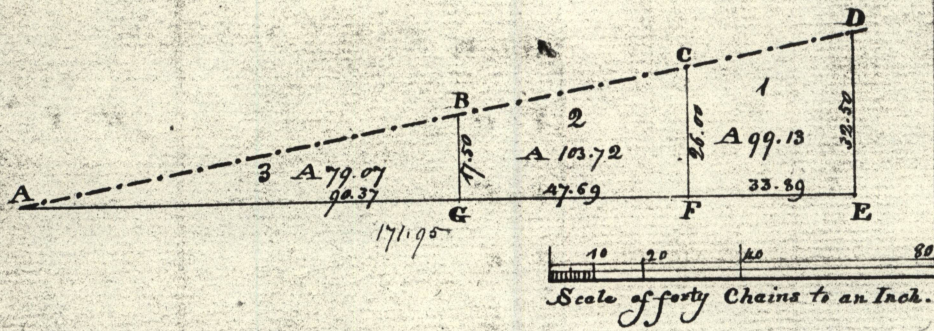


Section N. IV, Township N. IX, Range N. IX. Surveyed by A. Holmes, 181

T9-R-9-4 1/4

T10 R4 2 1/4

Field notes not found

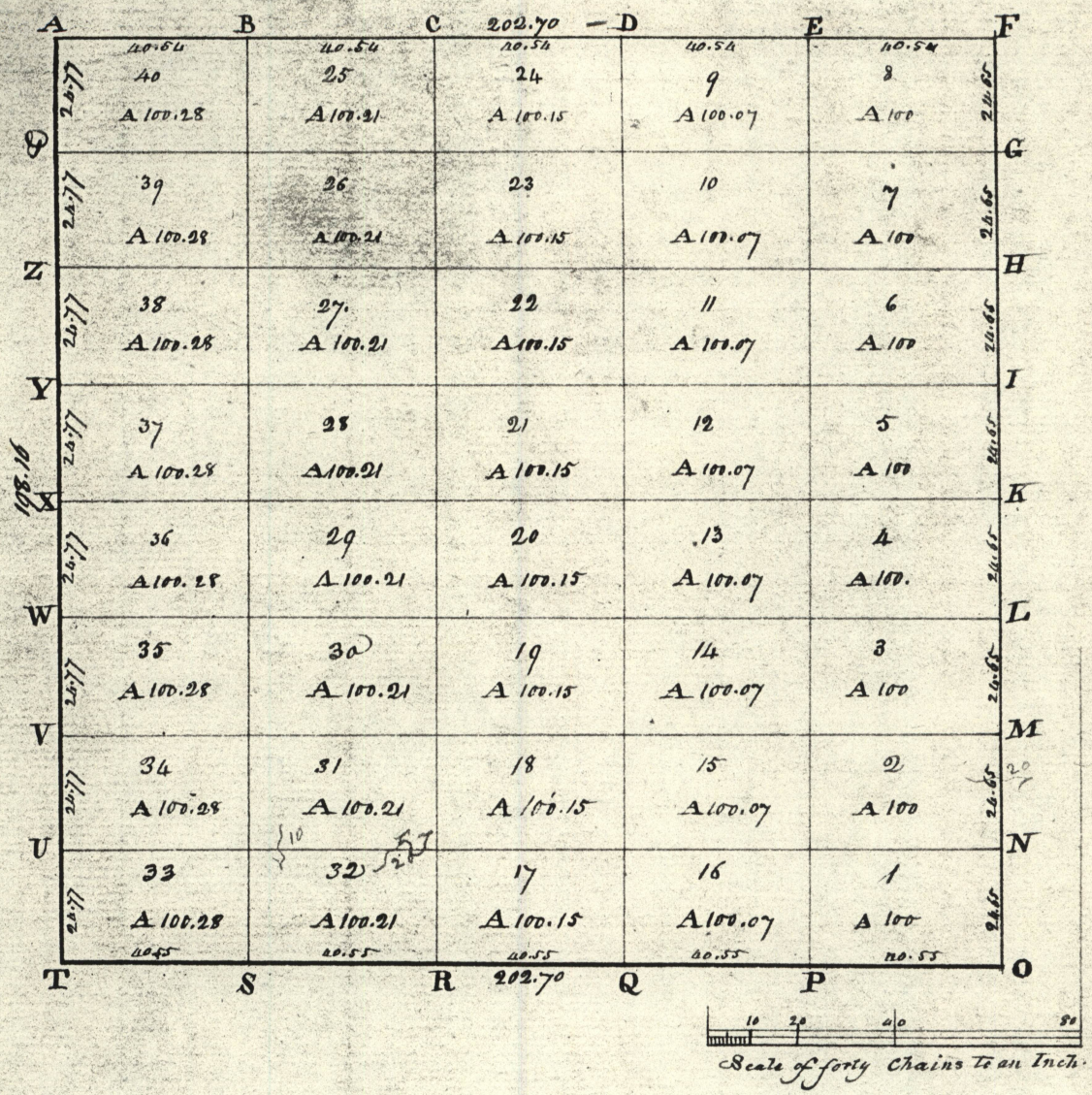


Section N<sup>o</sup> II, Township N<sup>o</sup> X, Range N<sup>o</sup> IV. Surveyed by Tho<sup>s</sup> Evans - 1811

19 25  
28

Section No. 2, Township No. 10, Range No. 4,

| Section corners | Bearing trees | Inches diam. | courses they bear | Links dist. |  |
|-----------------|---------------|--------------|-------------------|-------------|--|
| A               | White Oak     | 20           | S 7 E             | 38          |  |
|                 | do            | 20           | S 75 W            | 20          |  |
| B               | Ironwood      | 10           | N 33 W            | 20          | B to C. Land hilly timber<br>Chesnut & Oak             |
|                 | Elm           | 20           | N 75 W            | 16          |  |
| C               | W. Oak        | 30           | N 10 E            | 21          | C to D.  |
|                 | Maple         | 9            | N 81 E            | 21          |  |
| D               | W. Oak        | 20           | N 53 W            | 32          | D to E. Land very hilly & brushy<br>tim. Oak & Chesnut |
|                 | do            | 20           | S 83 W            | 38          |  |
| E               | W. Oak        | 20           | N 10 W            | 19          | E to F. Land Oak timber<br>Oak & Chesnut               |
|                 | do            | 30           | S 67 E            | 34          |  |
| F               | Beech         | 9            | S 82 W            | 26          | F to G. Land hilly timber<br>Same                      |
|                 | Hickory       | 20           | S 1 W             | 16          |  |
| G               | Dogwood       | 4            | N 12 E            | 10          | G to A. Land hilly & brushy timber<br>Same             |
|                 | W. Oak        | 20           | N 31 W            | 13          |  |



Section N<sup>o</sup> III, Township N<sup>o</sup> X, Range N<sup>o</sup> IV. Surveyed by W.<sup>m</sup> Harris . 1844

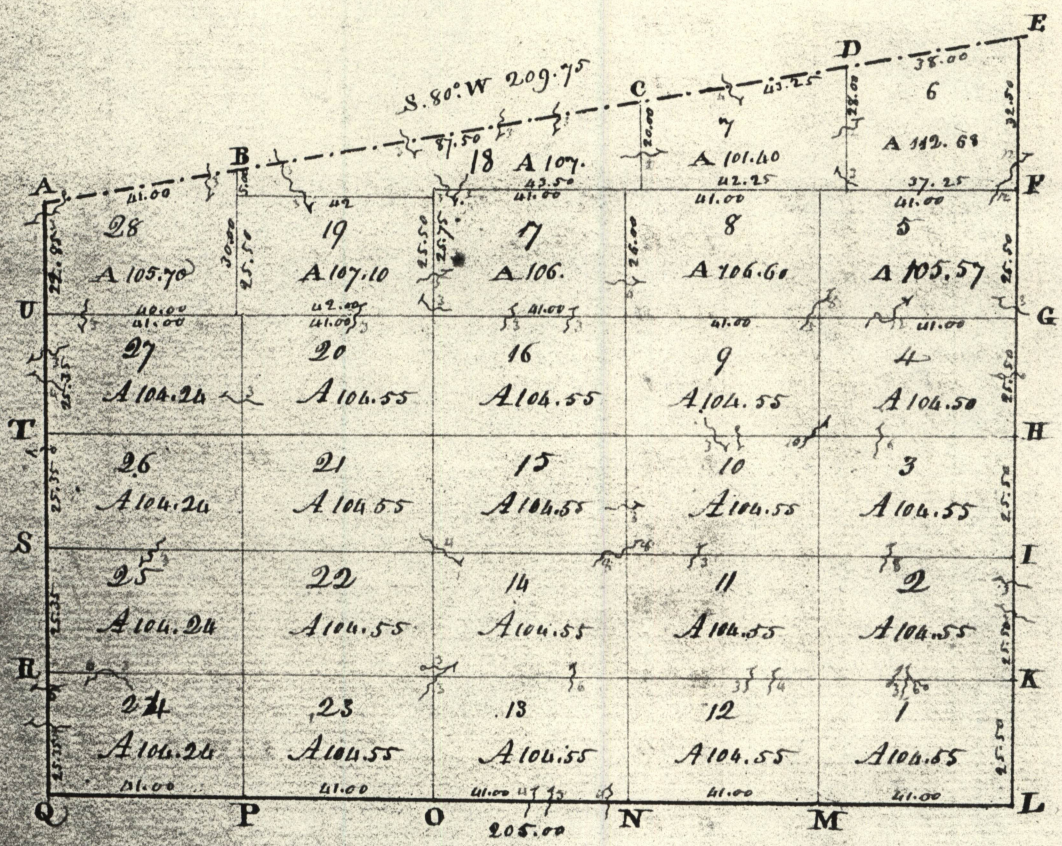
T10 R4 3 1/4

Section N<sup>o</sup>. 3, Township N<sup>o</sup>. 10, Range N<sup>o</sup>. 4,

Anterior Corners of Lots described

| Anterior Corners | Containing, trees | Inchs diam. | Courses they bear | Inchs dist. | Comers of Lots | Containing trees | Inchs diam. | Courses they bear | Inchs dist. |
|------------------|-------------------|-------------|-------------------|-------------|----------------|------------------|-------------|-------------------|-------------|
| A                |                   |             |                   |             | 1. 2. 12. 16   | N. Oak           | 18          | N 55              | N 8         |
|                  |                   |             |                   |             |                | N. Oak           | 13          | S 64              | E 7         |
| B                | Hickory           | 12          | S 76              | N 15        | 2. 3. 14. 15   | Hickory          | 13          | N 36              | E 8         |
|                  | do                | 9           | S 38              | E 6         |                | W. Beech         | 6           | N 63              | E 10        |
| C                | Hickory           | 8           | N 3               | E 6         | 3. 4. 13. 14   | Hickory          | 6           | N 75              | E 13        |
|                  | do                | 9           | S 13              | E 36        |                | Sugar            | 11          | N 37              | N 23        |
| D                | N. Oak            | 13          | N 88              | N 4         | 4. 5. 12. 13   | N. Oak           | 9           | N 15              | N 23        |
|                  | do                | 16          | N 32              | E 4         |                | do               | 10          | S 47              | N 21        |
| E                | Walnut            | 9           | S 76              | N 19        | 5. 6. 11. 12   | Honewood         | 7           | Course            |             |
|                  | Honewood          | 9           | S 73              | E 42        |                | N. Oak           | 18          | S 15              | N 22        |
| F                |                   |             |                   |             | 6. 7. 10. 11   | Hickory          | 18          | N 86              | E 30        |
|                  |                   |             |                   |             |                | Chesnut          | 12          | S 26              | N 16        |
| G                | Hickory           | 8           | S 21              | E 9         | 7. 8. 9. 10    | Dogwood          | 5           | S 37              | N 29        |
|                  | Doowobry          | 6           | S 75              | N 9         |                | Beech            | 9           | N 15              | E 22        |
| H                | N. Oak            | 27          | N 19              | E 44        | 9. 10. 23. 24  | N. Oak           | 30          | S 97              | N 5         |
|                  | Sugar             | 13          | S 7               | N 10        |                | Gum              | 9           | S 31              | E 30        |
| I                | Maple             | 11          | N 21              | N 8         | 10. 11. 22. 23 | Hickory          | 12          | S 62              | E 38        |
|                  | N. Oak            | 14          | S 10              | N 75        |                | N. Oak           | 15          | S 47              | N 19        |
| K                | N. Oak            | 13          | N 85              | N 33        | 11. 12. 21. 22 | Dogwood          | 6           | Course            |             |
|                  | Hickory           | 9           | N 67              | E 11        |                | N. Oak           | 16          | N 77              | E 9         |
| L                | Maple             | 7           | N 38              | N 30        | 12. 13. 20. 21 | Hickory          | 10          | N 6               | E 21        |
|                  | Sugar             | 24          | S 14              | N 28        |                | Gum              | 10          | S 4               | E 12        |
| M                | Beech             | 6           | S 30              | N 15        | 13. 14. 19. 20 | N. Oak           | 13          | S 35              | N 17        |
|                  | do                | 7           | N 5               | E 10        |                | do               | 12          | N 34              | N 30        |
| N                | Sugar             | 6           | S 13              | E 13        | 14. 15. 18. 19 | N. Oak           | 15          | N 23              | E 30        |
|                  | Gum               | 9           | N 15              | E 6         |                | Maple            | 10          | S 8               | N 27        |
| O                |                   |             |                   |             | 15. 16. 17. 18 | N. Oak           | 17          | N 6               | E 11        |
|                  |                   |             |                   |             |                | Hickory          | 12          | S 5               | N 28        |
| P                | N. Oak            | 10          | N 76              | E 4         | 17. 18. 31. 32 | Sugar            | 8           | N 86              | N 11        |
|                  | do                | 11          | S 13              | N 20        |                | do               | 9           | S 41              | E 28        |
| Q                | Hickory           | 7           | N 43              | E 14        | 18. 19. 30. 31 | Sugar            | 15          | N 83              | N 13        |
|                  | N. Oak            | 14          | S 77              | N 28        |                | Beech            | 9           | S 27              | E 40        |
| R                | Sugar             | 5           | S 43              | E 18        | 19. 20. 29. 30 | Hickory          | 9           | S 14              | N 18        |
|                  | N. Oak            | 27          | N 64              | N 23        |                | Gum              | 5           | N 76              | E 28        |
| S                | Sugar             | 12          | S 31              | N 9         | 20. 21. 28. 29 | Hickory          | 7           | N 10              | E 25        |
|                  | Honewood          | 4           | S 33              | E 27        |                | Walnut           | 7           | S 30              | E 20        |
| T                |                   |             |                   |             | 21. 22. 27. 28 | N. Oak           | 11          | N 29              | E 20        |
|                  |                   |             |                   |             |                | Gum              | 5           | S 92              | N 11        |
| U                | N. Oak            | 18          | N 28              | E 28        | 22. 23. 26. 27 | Dogwood          | 5           | S 1               | N 14        |
|                  | N. Oak            | 5           | S 58              | E 10        |                | do               | 6           | N 17              | N 13        |
| V                | N. Oak            | 14          | Course            | 27          | 23. 24. 25. 26 | N. Oak           | 12          | N 80              | E 49        |
|                  | do                | 10          | N 75              | E 14        |                | do               | 11          | S 24              | N 31        |
| W                | N. Oak            | 13          | S 21              | E 11        | 25. 26. 35. 40 | Gum              | 8           | N 81              | N 44        |
|                  | do                | 13          | Course            | 32          |                | N. Oak           | 10          | N                 | E 47        |
| X                | Hickory           | 8           | S 4               | E 27        | 26. 27. 38. 39 | Walnut           | 8           | N 46              | N 44        |
|                  | Chesnut           | 18          | N 18              | E 25        |                | N. Oak           | 16          | N 42              | E 32        |
| Y                | Hickory           | 10          | N 17              | E 17        | 27. 28. 37. 38 | Hickory          | 10          | N 57              | N 13        |
|                  | Walnut            | 12          | N 87              | N 34        |                | do               | 3           | S 15              | E 7         |
| Z                | Maple             | 7           | N 62              | N 20        | 28. 29. 36. 37 | N. Oak           | 11          | N 32              | E 20        |
|                  | Gum               | 8           | S 86              | E 27        |                | do               | 12          | S 13              | N 28        |
| V                | N. Oak            | 12          | S 35              | E 9         | 29. 30. 35. 36 | N. Walnut        | 9           | Course            |             |
|                  | do                | 11          | N 11              | E 20        |                |                  |             |                   |             |
|                  |                   |             |                   |             | 30. 31. 34. 35 | Honewood         | 5           | N 81              | E 15        |
|                  |                   |             |                   |             |                | Hickory          | 14          | S 31              | N 16        |
|                  |                   |             |                   |             | 31. 32. 33. 34 | Hickory          | 8           | N 63              | E 23        |
|                  |                   |             |                   |             |                | do               | 7           | S 77              | N 24        |

T 10 R 5 3/4



Scale of forty Chains to an Inch.

Section N<sup>o</sup> III, Township N<sup>o</sup> X, Range N<sup>o</sup> V. Surveyed by Alex<sup>r</sup> Holmes 1816

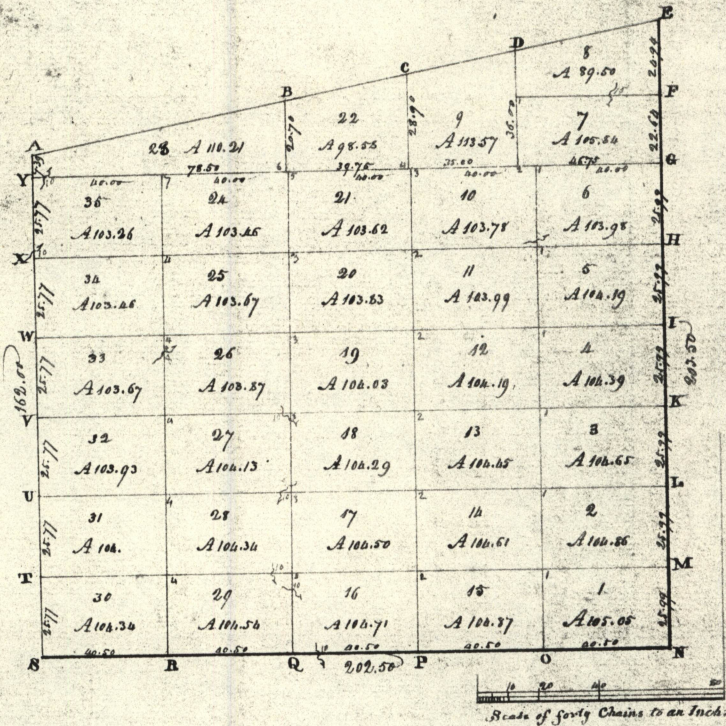
Section N<sup>o</sup>. 3, Township N<sup>o</sup>. 10, Range N<sup>o</sup>. 5.

Interior Corners of Lots described.

| Interior Corners | Bearing trees | Inches diam. | Courses they bear | Feet dist. | Corners of Lots | Bearing trees        | Inches diam. | Courses they bear | Feet dist. |
|------------------|---------------|--------------|-------------------|------------|-----------------|----------------------|--------------|-------------------|------------|
| A                | W. Oak        | 14           | S 19 E            | 48         | 5. 6. 7         | W. Oak               | 12           | N 19 E            | 20         |
|                  | do            | 15           | S 19 N            | 68         |                 | Cherry               | 12           | S 5 N             | 30         |
| B                | Beech         | 12           | S 47 N            | 26         | 7. 8. 18        | W. Oak               | 24           | N 14 N            | 64         |
|                  | W. Oak        | 20           | N 63 E            | 22         |                 | do                   | 24           | S 16 E            | 7          |
| C                | W. Oak        | 24           | S 2 N             | 14         | 17. 18. 22      | Maple                | 12           | N 31 N            | 17         |
|                  | Hickory       | 12           | N 24 E            | 37         | 18. 19. 28      | W. Oak               | 20           | S 45 E            | 43         |
| D                | W. Oak        | 24           | S 50 E            | 17         |                 | do                   | 18           | S 4 N             | 26         |
|                  | do            | 24           | N 30 N            | 30         | 17. 18. 19      | W. Oak               | 12           | N 57 E            | 37         |
| E                |               |              |                   |            |                 | Ash                  | 12           | S 81 N            | 55         |
| F                | W. Oak        | 8            | S 30 E            | 16         | 18. 19. 28      | W. Oak               | 20           | S 82 E            | 7          |
|                  | do            | 8            | N 21 N            | 14         | 19. 27. 28      | W. Oak               | 20           | N 44 E            | 30         |
| G                | W. Oak        | 18           | N 71 E            | 13         |                 | do                   | 15           | S 68 N            | 18         |
|                  | Ash           | 15           | S 46 N            | 54         | 19. 20. 27      | W. Oak               | 24           | S 4 N             | 35         |
| H                | Maple         | 12           | N 57 N            | 27         |                 | do                   | 18           | N 31 E            | 48         |
|                  | W. Oak        | 18           | N 56 E            | 40         | 16. 17. 19. 20  | Yew                  | 18           | N 70 E            | 40         |
| I                | Chesnut       | 15           | S 25 N            | 14         |                 | W. Oak               | 30           | S 20 N            | 13         |
|                  | W. Oak        | 24           | N 41 E            | 36         | 8. 9. 16. 17    | W. Oak               | 18           | South             | 5          |
| K                | do            | 30           | N 73 E            | 34         |                 | do                   | 15           | N 60 E            | 25         |
|                  | Chesnut       | 30           | S 63 N            | 26         | 8. 17. 18       | Ash                  | 15           | N 45 E            | 26         |
| L                | do            | 24           | S 5 N             | 68         |                 | do                   | 12           | S 13 N            | 14         |
|                  | W. Oak        | 16           | N 22 E            | 32         | 5. 7. 8         | W. Oak               | 24           | S 3 E             | 34         |
| M                | do            | 20           | S 40 N            | 24         |                 | do                   | 20           | N 36 E            | 9          |
|                  | Chesnut       | 18           | N 35 E            | 2          | 4. 5. 8. 9      | Hickory              | 15           | S 23 E            | 32         |
| N                | W. Oak        | 20           | S 18 E            | 32         |                 | Yew                  | 24           | N 37 N            | 49         |
|                  | do            | 24           | N 52 N            | 15         | 22. 23. 24. 25  | Chesnut              | 18           | N 20 E            | 33         |
| O                | Hickory       | 12           | N 20 E            | 17         |                 | Hickory              | 15           | S 3 N             | 17         |
|                  | W. Oak        | 15           | S 55 N            | 8          | 13. 14. 22. 23  | W. Oak               | 20           | West              | 5          |
| P                | W. Oak        | 18           | S 42 N            | 7          |                 | Beech                | 12           | N 61 E            | 4          |
|                  | do            | 24           | N 46 E            | 57         | 11. 12. 13. 14  | Yew                  | 12           | N 16 E            | 28         |
| R                | Sugar         | 20           | N 79 N            | 26         |                 | Hickory              | 12           | S 48 N            | 16         |
|                  | W. Oak        | 12           | S 80 E            | 23         | 1. 2. 11. 12    | W. Oak               | 20           | S 44 E            | 36         |
| Q                | W. Oak        | 16           | N 17 E            | 13         |                 | do                   | 18           | N 40 N            | 12         |
|                  | do            | 14           | N 48 E            | 13         | 2. 3. 10. 11    | Maple                | 18           | South             | 24         |
| S                | W. Oak        | 20           | N 46 N            | 6          |                 | W. Oak               | 15           | N 14 E            | 25         |
|                  | do            | 15           | S 47 E            | 28         | 10. 11. 14. 15  | Sugar                | 12           | S 47 E            | 26         |
| T                | W. Oak        | 18           | N 67 E            | 20         |                 | Yew                  | 12           | N 76 N            | 6          |
|                  | W. Oak        | 20           | S 5 N             | 18         | 14. 15. 21. 22  | W. Oak               | 36           | S 91 N            | 27         |
| U                | Hickory       | 7            | N 69 N            | 5          |                 | W. Oak               | 12           | N 62 E            | 15         |
|                  | Blow          | 8            | S 60 E            | 34         | 20. 21. 26. 27  | W. Oak               | 15           | N 76 E            | 13         |
|                  |               |              |                   |            | 15. 16. 20. 21  | do                   | 12           | S 48 N            | 11         |
|                  |               |              |                   |            |                 | W. Oak               | 18           | S 41 E            | 18         |
|                  |               |              |                   |            | 9. 10. 15. 16   | Maple                | 18           | N 3 N             | 33         |
|                  |               |              |                   |            | 3. 4. 9. 10     | W. Oak               | 18           | S 46 E            | 24         |
|                  |               |              |                   |            |                 | do                   | 18           | S                 | 21         |
|                  |               |              |                   |            | 21. 22. 25. 26  | No other timber near |              |                   |            |
|                  |               |              |                   |            |                 | W. Oak               | 18           | N 34 N            | 6          |
|                  |               |              |                   |            |                 | W. Oak               | 12           | S 85 E            | 34         |

This post stands 1.50 South of tree corner.





Section N<sup>o</sup>W, Township N<sup>o</sup>X, Range N<sup>o</sup>V. Surveyed by Thomas Evans.

Description of the Soil on the Interior Lot lines.

| Between Lots | Quality, &c.                                  | Between Lots | Quality, &c.                                |
|--------------|---|--------------|---|
| 6-7          | Land Coal - Timber Oak, Chesnut &c            | 24-25        | Land Coal & brushy - Timber Oak generally   |
| 7-11         | Same  | 16-17        | Land Silty - Timber Oak generally           |
| 21-22        | Same  | 17-28        | Land Silty & brushy - Timber Oak            |
| 23-24        | Land Silty & brushy - Timber Oak, Hickory, &c | 18-27        | Land Coal - Timber Oak, Hickory generally,  |
| 25-26        | Same  | 19-26        | Same  |
| 24-25        | Land Coal & brushy - Timber Oak generally     | 20-25        | Land level & good - Timber Oak, Glaw &c     |
| 24-25        | Same  | 21-24        | Land Coal very brushy - Timber Oak          |
| 20-21        | Land brushy - Timber Oak                      | 22-23        | Land Coal - Timber Oak generally            |
| 10-11        | Same  | 15-16        | Land Coal - Timber Oak, Chesnut, Hickory &c |
| 5-6          | Land Coal & Timber Oak                        | 14-17        | Land Same                                   |
| 33-34        | Land Coal brushy - Timber Oak generally       | 13-18        | Same  |
| 25-26        | Same  | 12-19        | Same  |
| 15-20        | Land level & rich - Timber Oak                | 11-20        | Same  |
| 11-12        | Same  | 10-21        | Land Coal brushy - Timber Oak, Chesnut &c   |
| 4-5          | Same  | 9-20         | Land Coal - Timber Oak & Hickory            |
| 32-33        | Land Silty & brushy - Timber Oak, Hickory, &c | 1-15         | Land Coal - Timber Oak, Chesnut &c          |
| 26-27        | Land level & rich - Timber Oak, Oak &c        | 2-14         | Land Silty - Timber Oak very brushy         |
| 18-19        | Land Silty - Timber Oak & Beech               | 3-13         | Same  |
| 12-13        | Same  | 4-12         | Land very brushy - Timber Oak, Chesnut &c   |
| 3-11         | Same  | 5-11         | Same  |
| 31-32        | Land Coal brushy - Timber Oak, Chesnut        | 6-10         | Same  |
| 27-28        | Same  | 7-9          | Land Coal & brushy - Timber Oak, Ash &c     |
| 17-18        | Same  | 7-8          | Land Coal - Timber Oak, Ash &c              |
| 13-14        | Same  |              |   |
| 9-9          | Same  |              |   |
| 30-31        | Land Coal & brushy - Timber Oak & Chesnut     |              |   |
| 28-29        | Land Silty & brushy - Timber Oak              |              |   |
| 16-17        | Same  |              |   |
| 14-15        | Same  |              |   |
| 1-2          | Same  |              |   |
| 29-30        | Land Silty & brushy - Timber Oak, Chesnut &c  |              |   |
| 25-26        | Same  |              |   |
| 27-28        | Land very brushy - Not much Timber standing   |              |   |
| 24-25        | Land Coal - Timber Oak                        |              |   |
| 25-26        | Land level & brushy - Timber Oak & Hickory    |              |   |

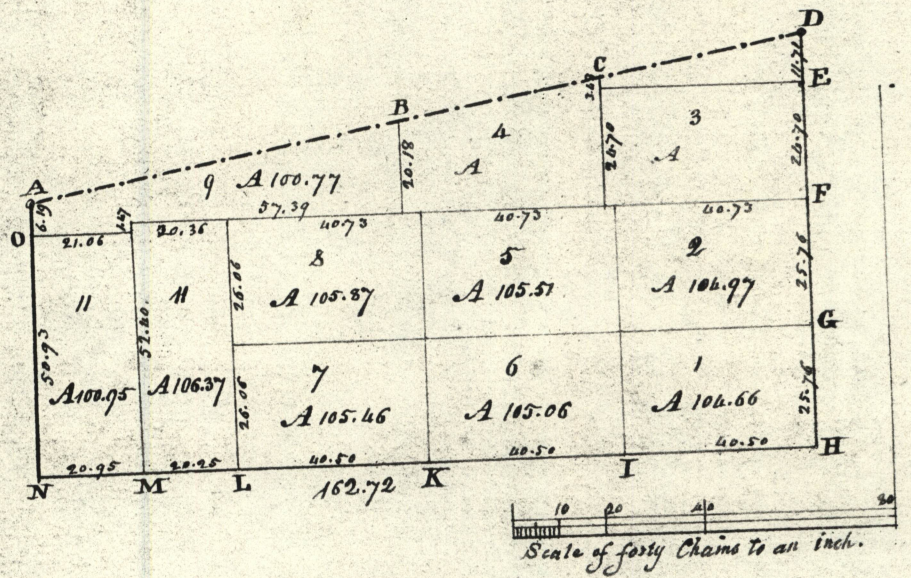
Section N<sup>o</sup>. 4, Township N<sup>o</sup>. 10, Range N<sup>o</sup>. 5,

Interior Corners of Lots described

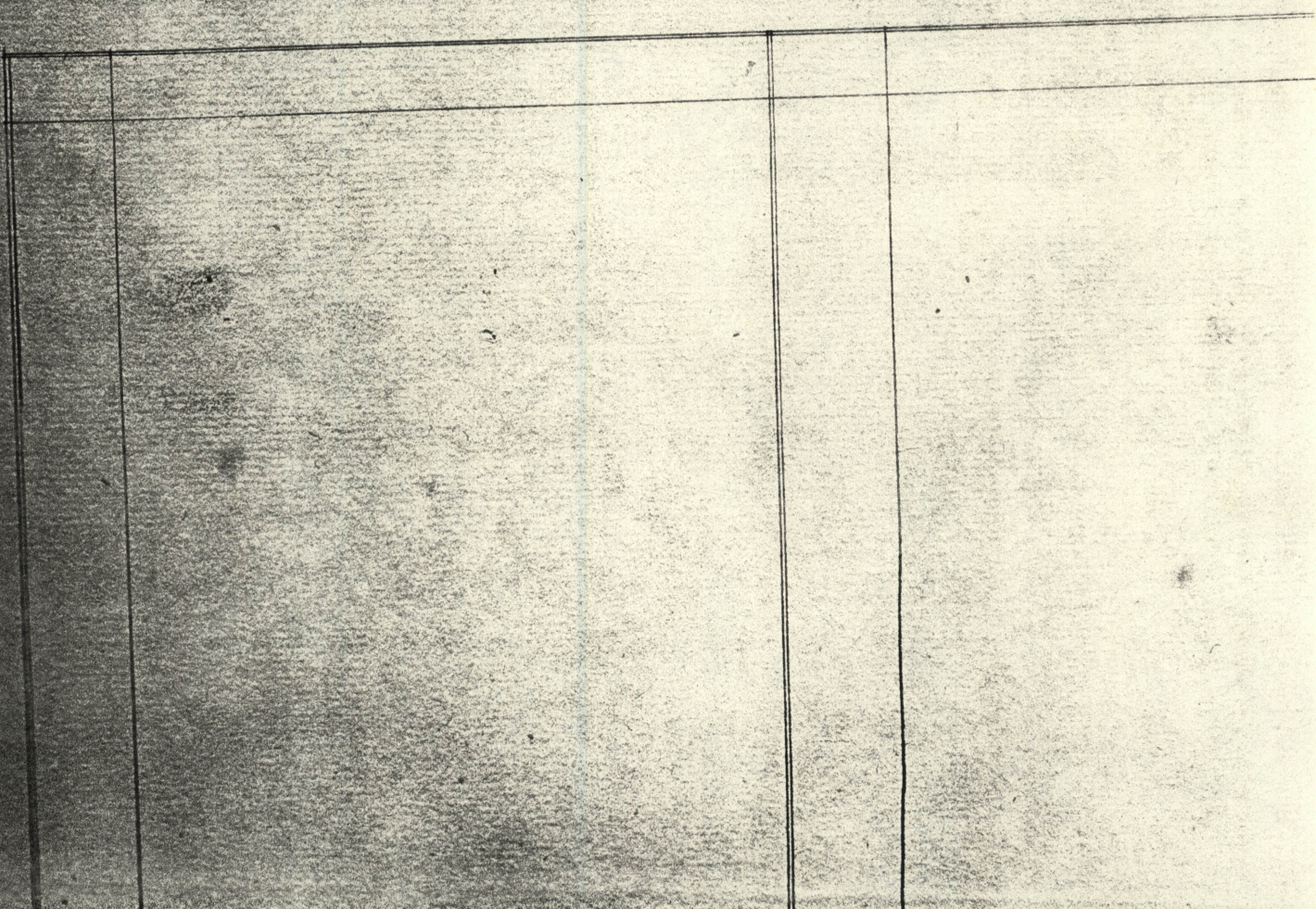
| Order | Bearing, trees | Links diam. | Courses they bear | Links dist. |   |
|-------|----------------|-------------|-------------------|-------------|---|
| A     | Aspen          | 9           | N 67 W            | 11          | A to B.   |
| B     | W. Oak         | 20          | N 23 E            | 12          | B to C.   |
| C     | Maple          | 20          | N 13 W            | 20          | C to D.   |
| D     | Aspen          | 20          | S 70 W            | 28          | D to E.   |
| E     | W. Oak         | 13          | S 47 E            | 11          | E to F. Sand hills, stony brushy, tim. Oak, Chesnut &c. |
| F     | Gum            | 10          | S 17 E            | 36          | F to G. Same  |
| G     | W. Oak         | 4           | N 81 W            | 35          | G to H. Same  |
| H     | do             | 20          | S 68 W            | 17          | H to I. Same  |
| I     | Poplar         | 4           | S 67 W            | 22          | I to J. Same  |
| J     | do             | 20          | N 33 W            | 27          | J to K. Same  |
| K     | Chesnut        | 24          | N 53 W            | 19          | K to L. Same  |
| L     | Poplar         | 4           | N 14 E            | 9           | L to M. Same  |
| M     | W. Oak         | 10          | N 61 E            | 30          | M to N. Same  |
| N     | do             | 20          | N 37 W            | 8           | N to O. Same  |
| O     | do             | 6           | N 35 E            | 25          | O to P. Same  |
| P     | W. Oak         | 28          | S 63 W            | 21          | P to Q. Same  |
| Q     | do             | 20          | N 45 E            | 19          | Q to R. Same  |
| R     | W. Oak         | 30          | S 47 E            | 14          | R to S. Sand hills & brushy, tim. Oak & Chesnut &c.     |
| S     | Chesnut        | 36          | N 54 E            | 60          | S to T. Sand hills - timber Oak & Chesnut               |
| T     | Aspen          | 25          | N 45 W            | 19          | T to U. Same  |
| U     | Gum            | 24          | S 71 E            | 18          | U to V. Same  |
| V     | W. Oak         | 4           | N 25 W            | 13          | V to W. Same  |
| W     | do             | 30          | S 25 W            | 13          | W to X. Same  |
| X     | W. Oak         | 8           | N 21 W            | 20          | X to Y. Sand hills & brushy, tim. Oak & Chesnut &c.     |
| Y     | Chesnut        | 28          | S 21 E            | 17          | Y to Z. Sand hills - timber Oak & Chesnut               |
| Z     | W. Oak         | 10          | N 19 W            | 18          | Z to A. Same  |
| A     | Gum            | 9           | N 60 E            | 29          | A to B. Same  |
| B     | Chesnut        | 24          | S 5 W             | 18          | B to C. Same  |
| C     | W. Oak         | 16          | N 22 E            | 38          | C to D. Same  |
| D     | W. Oak         | 20          | N 72 E            | 32          | D to E. Same  |
| E     | Chesnut        | 6           | S 35 E            | 25          | E to F. Same  |
| F     | Poplar         | 20          | corn tree         |             | F to G. Same  |
| G     | Gum            | 20          | N 70 E            | 16          | G to H. Same  |
| H     | Dogwood        | 4           | N 60 W            | 10          | H to I. Same  |
| I     | W. Oak         | 20          | N 30 E            | 16          | I to J. Same  |
| J     | Chesnut        | 20          | N 27 W            | 7           | J to K. Sand hills & brushy, timber Oak, Aspen &c.      |
| K     | W. Oak         | 4           | S 50 E            | 25          | K to L. Same  |
| L     | W. Oak         | 10          | S 33 W            | 6           | L to M. Same  |
| M     | Aspen          | 20          | N 80 E            | 10          | M to N. Same  |
| N     | do             | 15          | S 74 E            | 12          | N to O. Same  |

| Order  | Bearing, trees         | Links diam. | Courses they bear | Links dist. |  |
|--------|------------------------|-------------|-------------------|-------------|--|
| E to F | 1. Hickory             | 9           | S 4 E             | 9           |  |
| F to G | 1. Gum                 | 20          | N 31 W            | 39          |  |
| G to H | 1. Poplar              | 10          | North             | 4           |  |
| H to I | 2. W. Oak              | 20          | N 13 W            | 6           |  |
| I to J | do                     | 24          | S 45 E            | 16          |  |
| J to K | 3. W. Oak              | 24          | corn tree         |             |  |
| K to L | 4. Chesnut             | 28          | corn tree         |             |  |
| L to M | 5. Gum                 | 5           | S 13 W            | 15          |  |
| M to N | W. Oak                 | 24          | S 51 W            | 28          |  |
| N to O | W. Oak                 | 20          | N 13 E            | 33          |  |
| O to P | do                     | 6           | N 11 W            | 34          |  |
| P to Q | 7. Ash                 | 6           | S 14 W            | 24          |  |
| Q to R | W. Oak                 | 20          | S 80 W            | 31          |  |
| R to S | do                     | 3           | S 41 W            | 4           |  |
| S to T | Chesnut                | 4           | N 80 W            | 20          |  |
| T to U | 2. Dogwood             | 6           | N 53 E            | 15          |  |
| U to V | W. Oak                 | 36          | N 74 E            | 24          |  |
| V to W | 3. W. Oak              | 20          | S 10 W            | 17          |  |
| W to X | do                     | 4           | S 35 E            | 30          |  |
| X to Y | 4. Hickory             | 4           | N 83 E            | 25          |  |
| Y to Z | Gum                    | 8           | N 78 E            | 20          |  |
| Z to A | 1. W. Oak              | 3           | S 45 W            | 15          |  |
| A to B | do                     | 30          | N 45 E            | 32          |  |
| B to C | 2. Gum                 | 10          | S 8 W             | 17          |  |
| C to D | W. Oak                 | 30          | S 4 E             | 33          |  |
| D to E | 3. Elm                 | 40          | S 23 E            | 6           |  |
| E to F | Maple                  | 6           | N 32 W            | 28          |  |
| F to G | W. Oak                 | 20          | S 75 W            | 16          |  |
| G to H | W. Oak                 | 20          | S 75 W            | 9           |  |
| H to I | 1. Chesnut             | 3           | S 46 E            | 39          |  |
| I to J | W. Oak                 | 20          | N 80 W            | 33          |  |
| J to K | 2. W. Oak              | 20          | N 16 E            | 9           |  |
| K to L | 3. Ironwood            | 6           | corn tree         |             |  |
| L to M | 4. No post established |             |                   |             |  |
| M to N | 1. Hickory             | 10          | N 46 W            | 19          |  |
| N to O | W. Oak                 | 4           | N 28 E            | 15          |  |
| O to P | 2. Hickory             | 10          | N 46 E            | 7           |  |
| P to Q | do                     | 10          | N 24 E            | 23          |  |
| Q to R | 3. Gum                 | 9           | N 44 E            | 24          |  |
| R to S | Sugar                  | 8           | N 75 E            | 27          |  |
| S to T | 4. W. Oak              | 20          | corn tree         |             |  |
| T to U | 1. Hickory             | 20          | S 64 E            | 29          |  |
| U to V | Chesnut                | 20          | S 20 E            | 39          |  |
| V to W | 2. Ash                 | 9           | S 64 E            | 8           |  |
| W to X | Hickory                | 9           | N 20 W            | 18          |  |
| X to Y | 3. W. Oak              | 20          | N 12 E            | 30          |  |
| Y to Z | do                     | 45          | N 76 W            | 24          |  |
| Z to A | W. Oak                 | 40          | S 64 W            | 30          |  |
| A to B | do                     | 15          | N 35 E            | 36          |  |

T10 R 6 3/4



Section N<sup>o</sup> III, Township N<sup>o</sup> X, Range N<sup>o</sup> VI. Surveyed by W.<sup>m</sup> H.

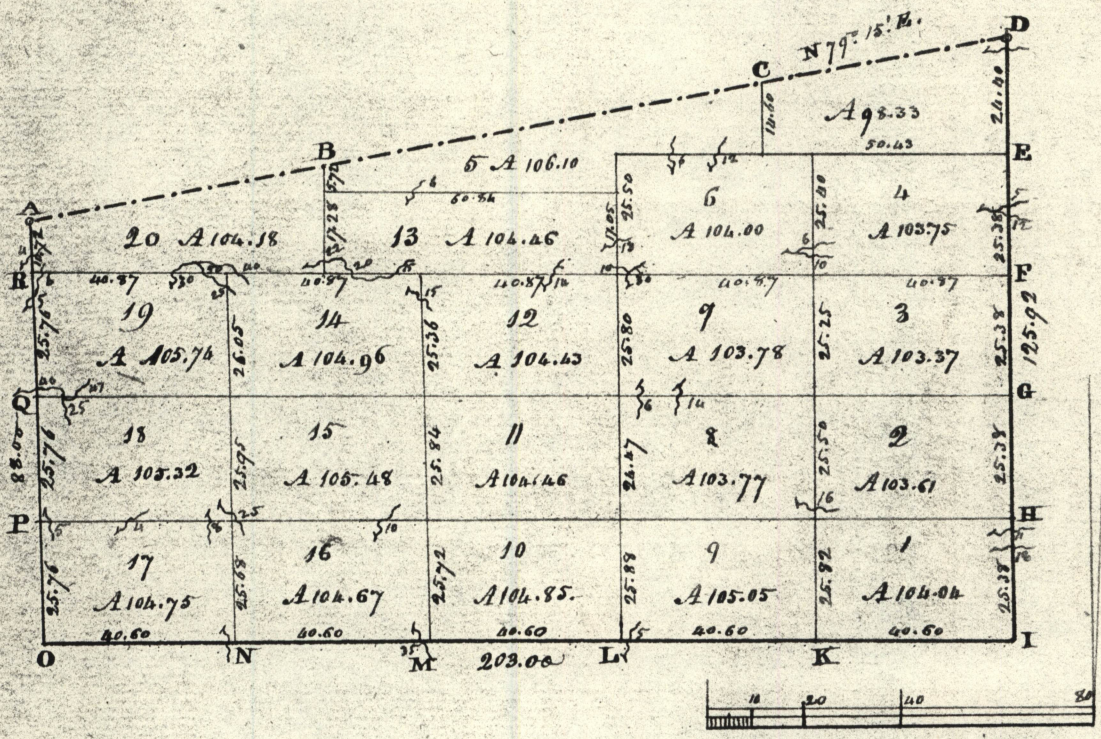


Section No. 3, Township No. 10, Range No. 6, Interior corners of Lots described

Interior  
Corners

| Interior<br>Corners | Cornering trees | Inchs<br>diam. | bearing<br>they bear | Inchs<br>dist. | Interior<br>Corners of Lots | Cornering trees | Inchs<br>diam. | bearing<br>they bear | Inchs<br>dist. |
|---------------------|-----------------|----------------|----------------------|----------------|-----------------------------|-----------------|----------------|----------------------|----------------|
| A                   |                 |                |                      |                | 1                           | Yew             | 10             | N 55 E               | 47             |
| B                   | W. Oak          | 15             | N 78 E               | 24             | 2                           | W. Oak          | 8              | S 3 N                | 59             |
|                     | do              | 13             | N 37 N               | 33             |                             | W. Beech        | 5              | N 68 E               | 5              |
| C                   | W. Oak          | 7              | S 22 N               | 11             | 3                           | Ironwood        | 7              | N 27 N               | 23             |
|                     | Cherry          | 10             | N 84 E               | 12             | 4                           | W. Oak          | 11             | S 75 N               | 13             |
| D                   |                 |                |                      |                |                             | Ironwood        | 9              | S 40 E               | 8              |
| E                   | W. Oak          | 14             | S 79 N               | 23             | 4                           | W. Oak          | 13             | N 66 E               | 15             |
|                     | Cherry          | 12             | N 87 E               | 36             |                             | B. Oak          | 16             | N 82 N               | 24             |
| F                   | Hickory         | 9              | N 15 N               | 12             | 5                           | Hickory         | 13             | South                | 8              |
|                     | do              | 6              | S 38 E               | 3              | 6                           | W. Oak          | 14             | S 79 N               | 29             |
| G                   | Sugar           | 11             | S 18 N               | 20             |                             | Hickory         | 10             | S 67 E               | 32             |
|                     | Hickory         | 13             | N 71 N               | 10             | 6                           | Logwood         | 6              | N 82 N               | 32             |
| H                   |                 |                |                      |                | 7                           | W. Oak          | 15             | N 28 N               | 17             |
| I                   | Hickory         | 8              | S 89 E               | 18             |                             | do              | 30             | S 4 N                | 33             |
|                     | Logwood         | 6              | S 20 E               | 7              | 8                           | Ash             | 8              | S 45 N               | 18             |
| J                   | Hickory         | 10             | S 73 N               | 13             |                             | Elm             | 10             | S 6 E                | 7              |
|                     | do              | 12             | S 17 E               | 7              | 9                           | Logwood         | 7              | N 64 N               | 24             |
| K                   | Walnut          | 24             | S 83 E               | 5              |                             | B. Walnut       | 5              | N 63 E               | 33             |
|                     | W. Oak          | 13             | S 38 N               | 23             | 1.2.5.6                     | Maple           | 8              | South                | 38             |
| L                   | Ash             | 7              | N 26 E               | 10             |                             | W. Oak          | 27             | S 76 N               | 37             |
|                     | Elm             | 8              | S 87 E               | 31             | 5.6.7.8                     | B. Walnut       | 15             | S 81 E               | 22             |
| M                   |                 |                |                      |                |                             | W. Oak          | 24             | N 8 N                | 41             |
| N                   |                 |                |                      |                |                             |                 |                |                      |                |
| O                   | Hickory         | 14             | N 78 E               | 8              |                             |                 |                |                      |                |
|                     | Yew             | 5              | S 75 E               | 8              |                             |                 |                |                      |                |

T10 R6 A 1/4



Section N<sup>o</sup> IV, Township N<sup>o</sup> X, Range N<sup>o</sup> VI. Surveyed by W<sup>m</sup> Cutbush - 1860

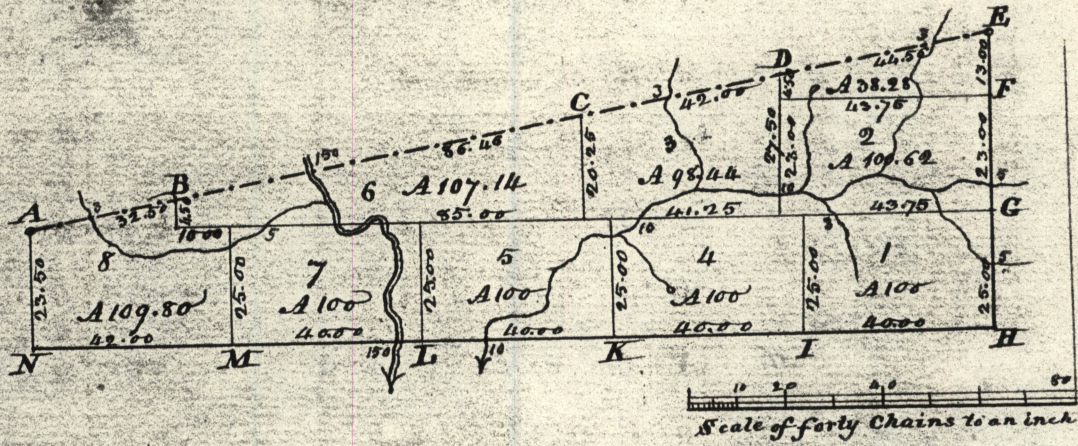
Section N<sup>o</sup>. 4, Township N<sup>o</sup>. 10, Range N<sup>o</sup>. 6, Anterior corners of Lots described

| Anterior corners | Bearing trees | Inches diam. | Courses they bear | Links dist. | Anterior corners of Lots | Bearing trees | Inches diam. | Courses they bear | Links dist. |
|------------------|---------------|--------------|-------------------|-------------|--------------------------|---------------|--------------|-------------------|-------------|
| A                | W. Oak        | 24           | S 12 E            | 20          | 3. 4. 6. 7               | W. Oak        | 14           | S 7 1/2 E         | 12          |
|                  | W. Oak        | 26           | N 12 W            | 35          |                          | Maple         | 7            | N 8 1/2 W         | 23          |
| B                | Maple         | 15           | N 16 1/2 W        | 19          | 6. 7. 12. 13             | W. Oak        | 18           | S 7 W             | 20          |
|                  | Chenowood     | 5            | S 9 E             | 18          |                          | Wickory       | 12           | N 61 E            | 23          |
| C                | Wickory       | 8            | S 27 W            | 19          | 12. 14                   | W. Oak        | 10           | N 7 1/2 E         | 9           |
|                  | do            | 10           | N 8 1/2 E         | 20          |                          | Crab Apple    | 5            | N 7 1/2 W         | 16          |
| D                |               |              |                   |             | 13. 20                   | Chenowood     | 5            | S 20 E            | 14          |
|                  |               |              |                   |             |                          | Elm           | 6            | N 5 E             | 43          |
| E                | W. Oak        | 18           | N 2 1/2 E         | 10          | 11. 19                   | Chenowood     | 6            | N 7 1/2 E         | 6           |
|                  | do            | 24           | S 4 E             | 22          |                          | B. Oak        | 7            | N 5 1/2 W         | 36          |
| F                | W. Oak        | 14           | N 8 1/2 W         | 22          | 15. 16. 17. 18           | Chenowood     | 8            | N 5 1/2 E         | 10          |
|                  | W. Oak        | 18           | S 7 1/2 E         | 12          |                          | do            | 12           | S 5 1/2 W         | 34          |
| G                | W. Oak        | 36           | N 5 1/2 W         | 37          | 14. 15. 18. 19           | Wickory       | 15           | S 4 1/2 E         | 15          |
|                  | do            | 36           | S 2 1/2 E         | 34          |                          | Sugar         | 27           | N 3 1/2 W         | 14          |
| H                | Lynen         | 24           | East              | 13          | 10. 11. 15. 16           | W. Oak        | 14           | N 44 W            | 26          |
| I                |               |              |                   |             |                          | do            | 5            | S 20 1/2 W        | 13          |
|                  |               |              |                   |             | 11. 12. 14. 15           | W. Oak        | 16           | N 1 1/2 E         | 28          |
| K                | Aspen         | 12           | S 49 1/2 W        | 58          | 8. 9. 10. 11             | Maple         | 10           | S 3 1/2 W         | 12          |
|                  | do            | 9            | S 65 1/2 E        | 80          |                          | Elm           | 8            | S 6 1/2 E         | 10          |
| L                | W. Oak        | 30           | S 5 E             | 8           | 7. 8. 11. 12             | B. Oak        | 10           | N 41 W            | 40          |
|                  | Wickory       | 6            | N 1 1/2 E         | 7           |                          | W. Oak        | 10           | N 1 1/2 E         | 25          |
| M                | W. Oak        | 12           | N 17 E            | 29          | 1. 2. 8. 9               | Maple         | 8            | S 8 W             | 23          |
|                  | Wickory       | 12           | S 42 1/2 W        | 38          |                          | Oak           | 9            | S 30 W            | 4           |
| N                | Maple         | 7            | S 13 W            | 11          | 2. 3. 7. 8               | W. Oak        | 8            | N 27 E            | 13          |
|                  | Chenowood     | 8            | N 21 1/2 W        | 18          |                          | Wickory       | 8            | S 8 1/2 E         | 13          |
| O                |               |              |                   |             |                          | W. Oak        | 18           | N 24 W            | 32          |
|                  |               |              |                   |             | 12. 5                    | do            | 8            | N 60 W            | 33          |
| P                | Sugar         | 15           | S 30 W            | 11          | 6. (N. W.)               | Chenowood     | 12           | S 5 1/2 E         | 19          |
|                  | Wickory       | 14           | N 30 1/2 W        | 15          |                          | W. Oak        | 36           | N 33 1/2 W        | 13          |
| Q                | Crab Apple    | 5            | N 71 E            | 7           |                          | do            | 20           | S 81 E            | 43          |
|                  | do            | 5            | S 36 W            | 27          | 4. 6                     | W. Oak        | 14           | S 49 E            | 28          |
| R                | W. Oak        | 12           | S 55 W            | 20          | 5. 7. 11                 | do            | 36           | S 8 1/2 W         | 36          |
|                  | do            | 15           | N 8 1/2 W         | 20          |                          | W. Oak        | 26           | N 8 1/2 E         | 11          |
|                  |               |              |                   |             | 5. 13                    | W. Gum        | 6            | S 22 W            | 29          |
|                  |               |              |                   |             |                          | W. Oak        | 12           | S 9 W             | 15          |
|                  |               |              |                   |             |                          | Wickory       | 7            | N 22 1/2 E        | 26          |



T 10 R 7 4 1/4

①



Section N<sup>o</sup>. IV, Township N<sup>o</sup>. X, Range N<sup>o</sup>. VII. Surveyed by A. Holmes, 1818.