

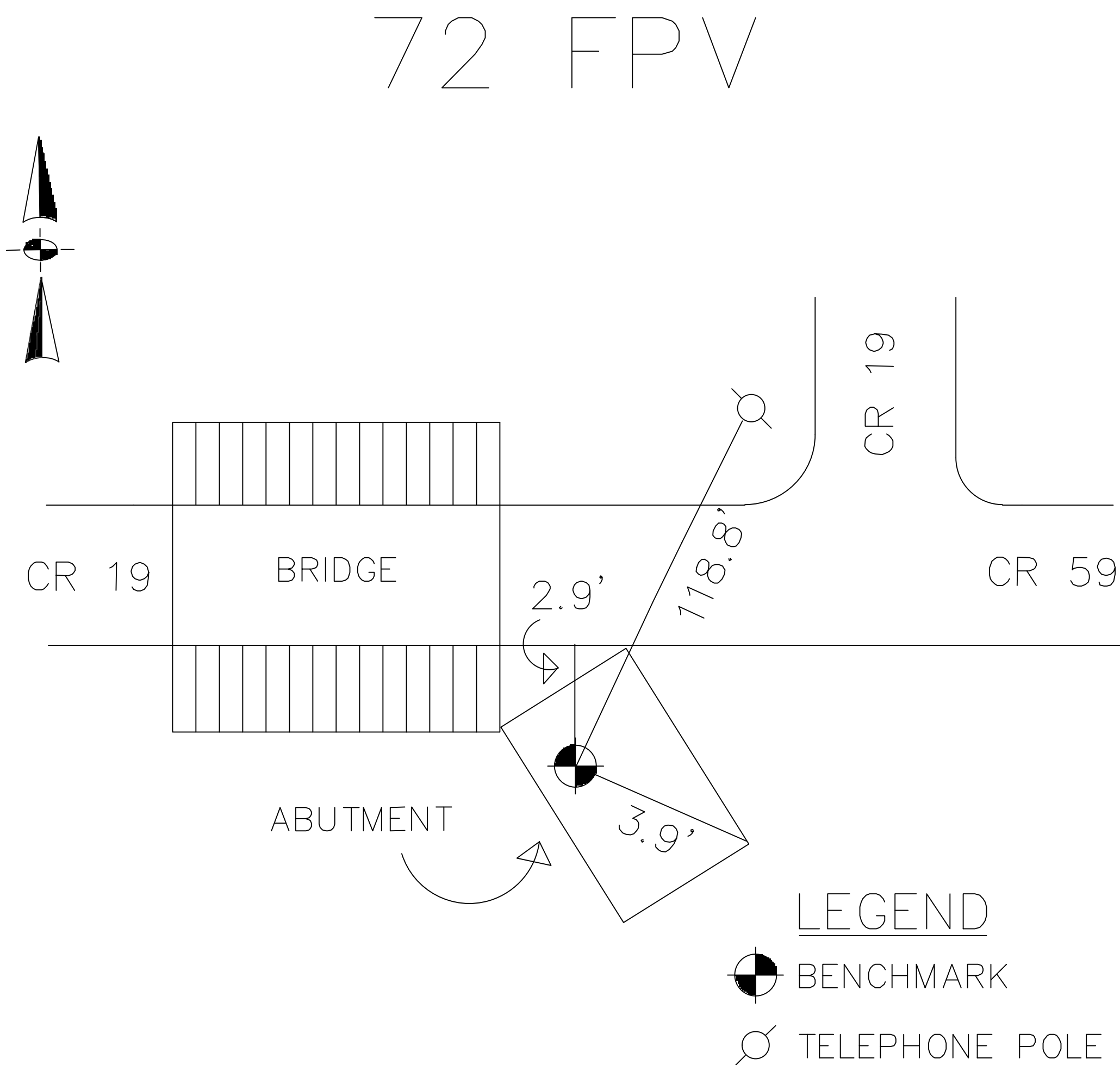
HOLMES COUNTY ENGINEER'S OFFICE

GEODETIC SURVEY MARKER

STATION NAME 72FPV ALIAS N/A
USGS QUAD NEW BEDFORD TOWNSHIP MECHANIC
TYPE OF MARK Brass Disk in Concrete SET BY EXISTED
STAMPING ON MARK 72FPV DATE SET EXISTED
STATION LOCATION: AT THE JUNCTION OF COUNTY ROAD 59 AND COUNTY ROAD 19, FOUND ON THE SOUTHWEST SIDE IN A BRIDGE ABUTMENT.

HORZ DATUM NAD83-86 HORZ ORDER 1ST METHOD GPS
LATITUDE 40-27-30.833127 LONGITUDE 81-52-15.313150
NORTH (y) meters 88130.249 EAST (x) meters 653357.757
NORTH (y) US feet 289140.660 EAST (x) US feet 2143557.908
CONVERGENCE 0-24-47.79 COMBINED FACTOR 0.99995980
STATE PLANE COORDINATE SYSTEM ZONE: OHIO NORTH
VERT DATUM NAVD88 VERT ORDER 2ND
ELEVATION (z) meters 259.285 ELEVATION (z) US feet 850.674

STATION REFERENCES



NOT TO SCALE

