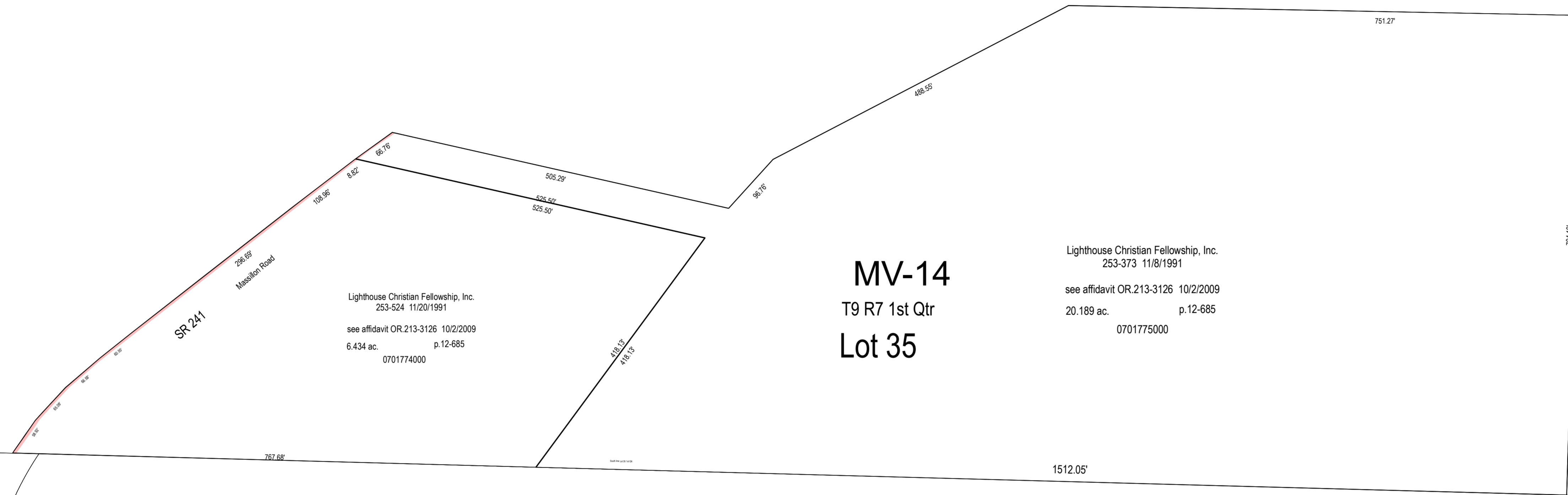


H-23

H-28



Lighthouse Christian Fellowship, Inc.  
 253-524 11/20/1991  
 see affidavit OR.213-3126 10/2/2009  
 6.434 ac. p.12-685  
 0701774000

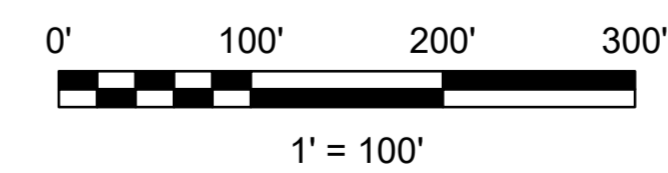
**MV-14**  
 T9 R7 1st Qtr  
**Lot 35**

Lighthouse Christian Fellowship, Inc.  
 253-373 11/8/1991  
 see affidavit OR.213-3126 10/2/2009  
 20.189 ac. p.12-685  
 0701775000

MV-02

H-27

H-22



LET IT BE KNOWN, THIS MAP HAS BEEN PREPARED AS A REFERENCE GUIDE TO PROPERTY OWNERSHIP. WE BELIEVE THIS INFORMATION TO BE CORRECT AND CURRENT. HOWEVER IT IS NOT INTENDED FOR ANY LEGAL USE, WHETHER IT BE SALES, TRANSFERS, TRADES, LEASES OF ANY TYPE, ETC. AND DO NOT ACCEPT RESPONSIBILITY FOR ERRORS OF ANY NATURE OR OMISSIONS CONTAINED HEREIN.

**S.F.T.**  
 new survey required  
 for next transfer

Last Revision: 5/19/2022



**Village of Millersburg**  
**.Lot 35**  
**1st Qtr., T-9, R-7**  
**Hardy Twp.**  
**Holmes County, Ohio**

**MV-14**