

ACRES	QTR	LQT	SEC	TWP	RNG
6.77	3	18		9	8

Monroe Twp.

PLAT 14-193

PCL # 14-00540.000

OUTSALE

M-S W GRANTEE

DEED

REFERENCE

DATE

Jeanette
McBaine, Bruce & Thomas,

Surv
259

deed
663

212 899

4-26-
1993

Jeanette
McBane, Bruce & Thomas,

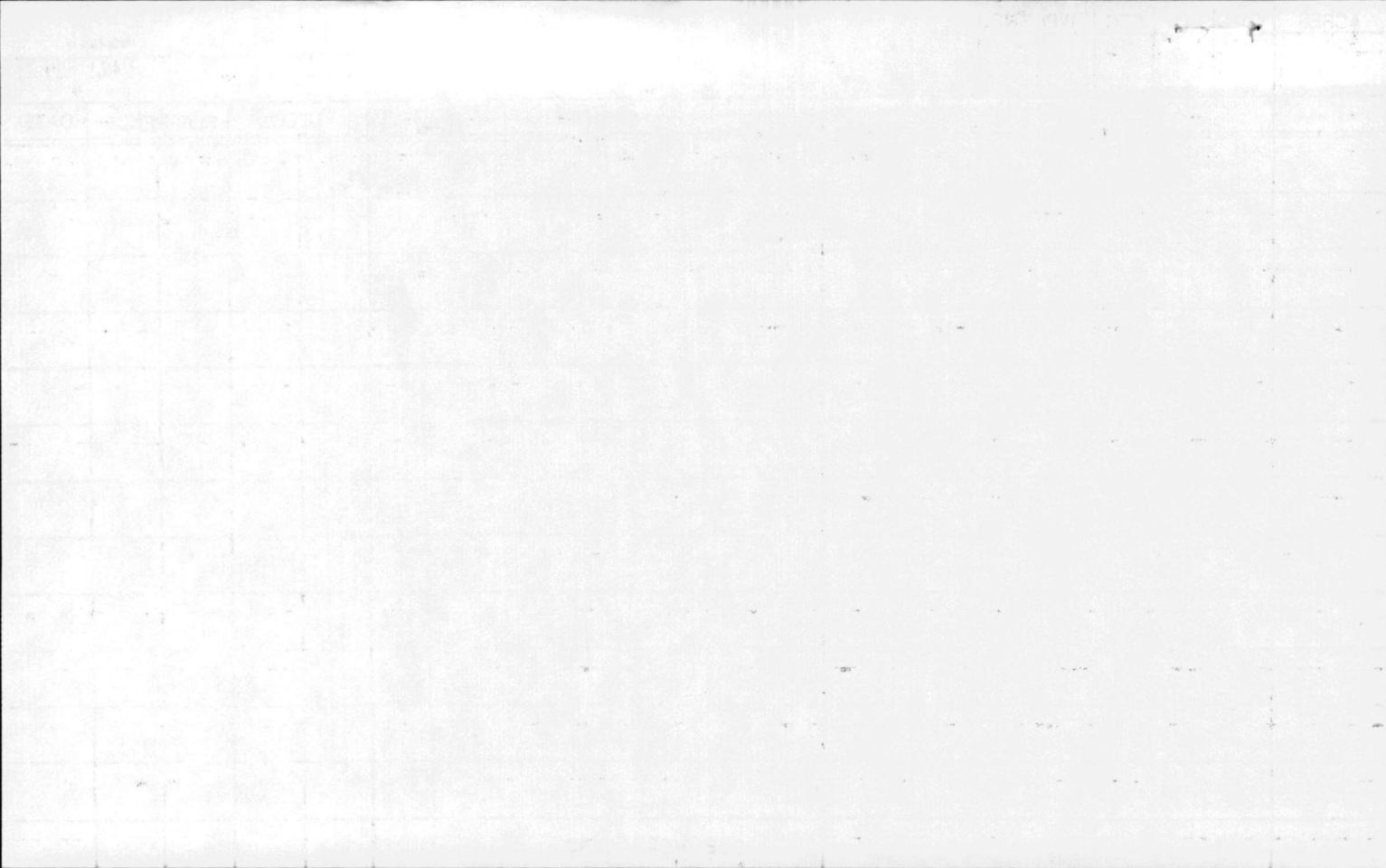
Surv
259

deed
937

correct'n

5-12-
1993

SEE NEXT CARD



ACRES	QTR.	LOT	SEC.	TWP.	RNG.	PLAT	DEED	REFERENCE	DATE	
4.822 13.0	3	18		9	8 L	Monroe Twp.				
<i>Npt Mid</i>	OUTSALE					GRANTEE 14-00540.000	VOL.	PG.	VOL.	PG.
						Martin, Bertha	82	562		9-6- 1916
						Martin, Raymond E.	182	615	82	562 1-12- 1973
						Martin, Jeffery	212	899	182	615 5-12- 1981
7.106						Reiheld, Kenneth	218	576	10	63 10-22- 1982
1.072						Martin, Timothy A.	243	155	12	206 5-2- 1989
						Void: resurveyed				
						SEE NEXT CARD				