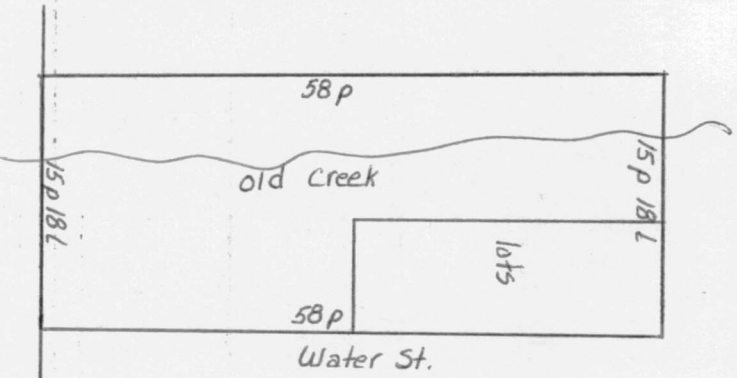


Killbuck Village

ACRES	QTR	LOT	SEC	TWP	RANGE	GRANTOR OR OUTSALE	GRANTEE	DEED		REFERENCE		
								VOL	PG	VOL	PG	YEAR
5.71		2				<i>desc. on deed as O.L. 15p90 x 58p = 5.71ac</i>	Duncan, John	24	244			10-17- 1860
		Out Sale				Duncan's Addition				1	125	11-10- 1870
							Duncan, J.C. & William	<i>will record</i> 2	430	24	244	9-7- 1878
						<i>desc. changes to land E. of creek. See back</i>	Fred & Ada Bedford Duncan, John H. & Carl &	97	478	<i>will record</i> 2	430	3-21- 1929
							Fred Duncan, John H. & Carl &	97	481	97	478	3-21- 1929
							Kent P. Johnson, Harriette D. &/or	99	426	<i>will record</i> 2	430	9-6- 1930
							Johnson, Harriette D.	<i>Kent dec'd,</i>		<i>can't find</i>	<i>deed</i>	
							Johnson, Harriette D.	101	397	trust		7-19- 1932
							Johnson, Harriette D. Bradfield, Carrie D. &	101	399	99	426	7-20- 1932
							Duncan, John H.	101	464	97	478	10-31- 1932
		Out Sale				Duncan, J.H.		102	68			8-7- 1933
.4		Out Sale				Smith, Bernard C. & Eva L.		122	492			6-20- 1949



original desc. (24-244)
15 p 18 l x 58 p

97-481 desc.

N by old creek 4 Lot 45

E by lots 45, 46, 47, 48, 49

1 Water St.

S by South line Sec. 6

W by center old creek

Can't find current owner for
~~land to of creek~~ small
piece left after outsales.
Rick Hawkins Lumber Co. is current
owner for land W of creek. 212-53