

ACRES	QTR.	LOT	SEC.	TWP.	RNG.
6.7894 6.9134			12	8	5

PLAT 10-231		
DEED	REFERENCE	DATE
VOL.	PG.	VOL. PG.

NE OUTSALE Raber, Emanuel J. Clark Twp.

C-18 NE GRANTEE *02-00911.000*

Surv deed 222 838	195 579	2-14-1984
	17 561	7-17-2000
216 954	19 1635	2-1-2010

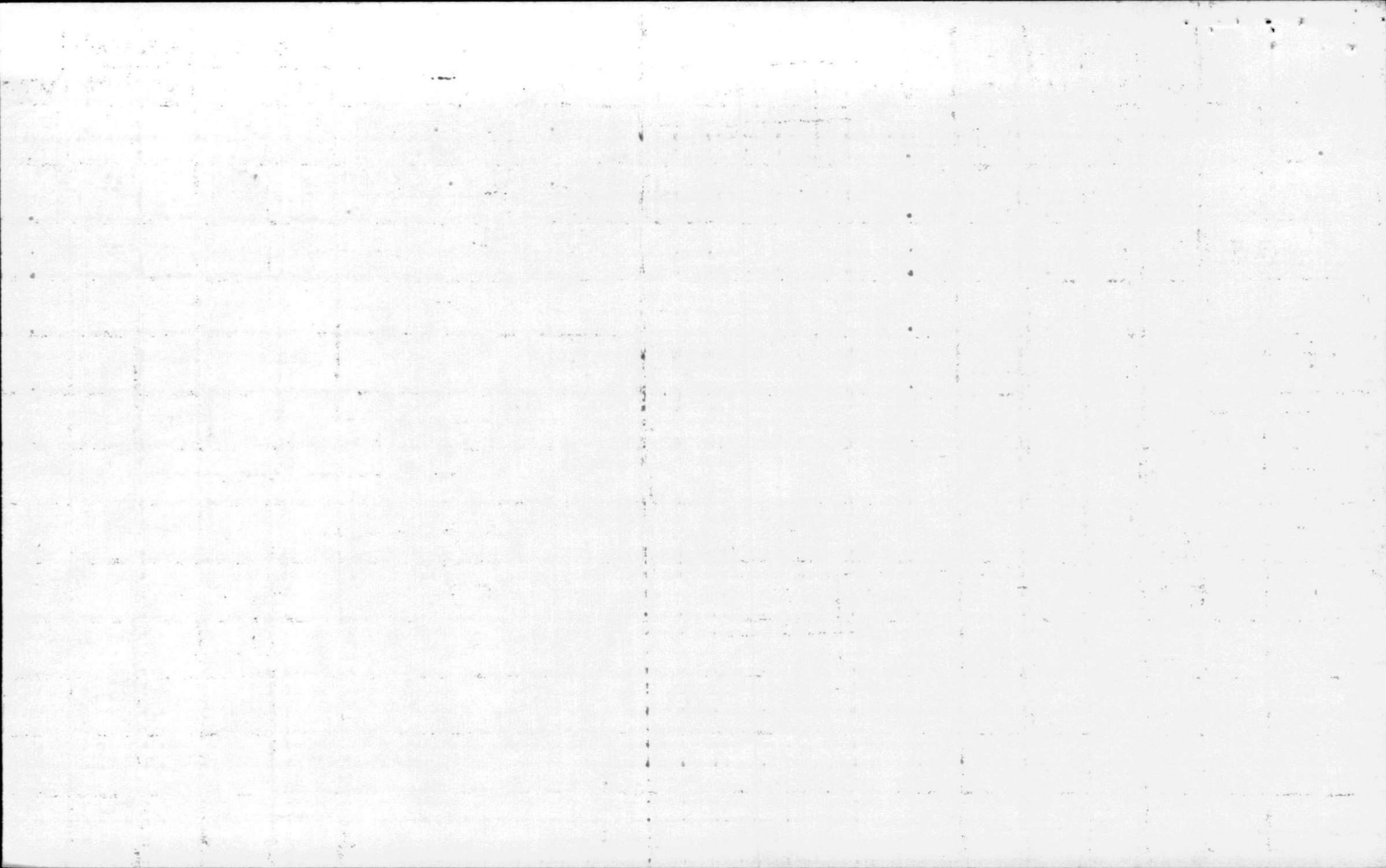
.104 Eli J. & Katie D. Raber Subdivision

Raber, Eli J. & Katie

0.02 Raber, Abe J. & Sarah; Raber, Robert A.

ACRES	QTR	LOT	SEC	TWP	RANGE	GRANTOR OR OUTSALE	GRANTEE	DEED		REFERENCE		
								VOL	PG	VOL	PG	YEAR
4.63			12	8	5		Raber, John F. & Elizabeth	109	204			1939
							Raber, Eli J & Katie & Raber, Emanuel J.	195	579			1976
							Raber, Eli J & Katie & Raber, Emanuel J. & Iva Mae	Surv 212	deed 869		195	579 1981
							combined with the 1.8344 split					
							to = 6.9134 by new survey					

C-18A



Deed 222-838 is for $\frac{1}{2}$ interest only, They received the other half interest when it was 8.5 acres in Deed 212-869.