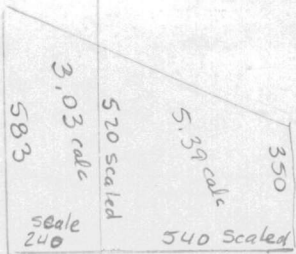


$$\begin{array}{r} 350 \\ 520 \\ \hline 870 \end{array} \div 2 = 435$$

$$\begin{array}{r} \times 540 \\ \hline 234,900 \end{array} \text{ sqft} = 5.39 \text{ ac}$$



Sec 31

Sec 6

$$\begin{array}{r} 580 \\ 583 \\ \hline 1103 \end{array} \div 2 = 551.5$$

$$\begin{array}{r} \times 240 \\ \hline 132,360 \text{ sqft} \\ 3,038 \text{ ac} \end{array}$$