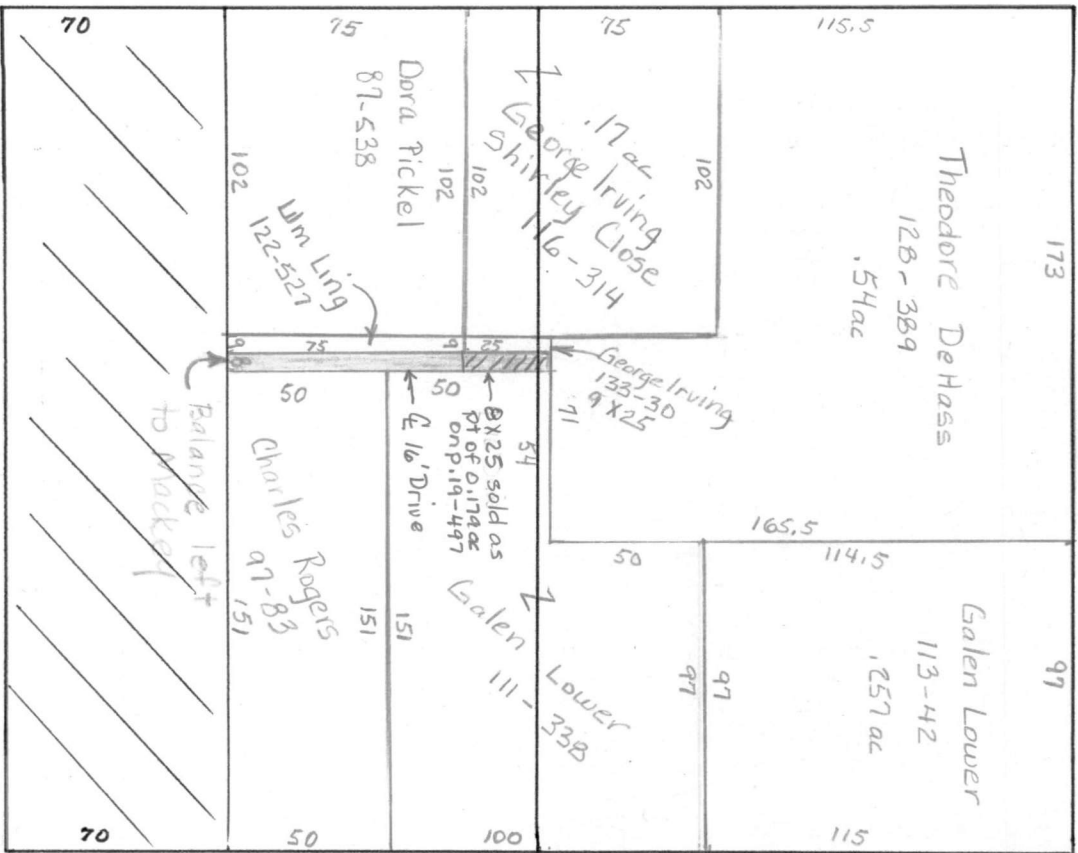


S 1/2 sec 5 70ft Harry Mackey B1-279
N 1/2 Anna Mackey B2-25+26

Old DL 11 DV 11-206
DL 29 264 X 330

1" = 60'



ACRES	OTR	LOT	SEC	TWP	RNG	01d 0L 11 DV 11-206	PLAT			
N half		OL 29				Millersburg Village	PCL #			
OUTSALE Voorhees, E.A. & E.J. GRANTEE							DEED	REFERENCE	DATE	
						Voorhes, Daniel D.	40- 45-	37	365	1877
						Daniel D. Voorhes	40- 59			1877
						Voorhes, Virginia I.	40- 147	40	45	1877
						Tarr, Eugene	43- 212-	40	147	1880
						McDowell, Etta	44- 548-	43	212	1881
						Mackey, Anna E.	82	25 &	26	³⁻³¹ 1914
The balance of this card was combined with the Npt of South half of this out lot										
which is owned by Anna's husband Harry. From this point forward they split off										
parcels without regard to the way they took title.										
SEE NEXT CARD										

ACRES	QTR	LOT	SEC	TWP	RNG	PLAT		
.576 calc.	OL					01d 0L 11 DV 11-206		
2.0	29					Millersburg Village		
OUTSALE						PCL #		
GRANTEE						DEED	REFERENCE	DATE
Vorwerk, Jacob & Charles						26- 187		5-5 1859
Vorwerk, Jacob						26- 189	26 187	4-13 1861
Elizabeth J. Voorhes, Elizabeth A. and						37- 365	26 189	11-24 1874
N half	Voorhes, Daniel D.					40	45	3-15 1877
1.0 N half	Voorhes, Daniel D.					40	59	4-2 1877
Voorhes, Carolus & Elizabeth J						Not Found		
Voorhes, Martha M.						59-	44	1-6 1896
Voorhes, Bertha A.						62-	552 59 44	1899
McDowell, John A.						64	333 62 552	3-24 1899
.424 calc S 70 ft	Glasgow, Harvey A. (F, G, I, Spt J)					74	196	1907
Harry A. Mackey						81	279 64 333	4-1 1914
Balance of this card combined with N half owned by Harry Mackeys wife Anna								
SEE NEXT CARD								