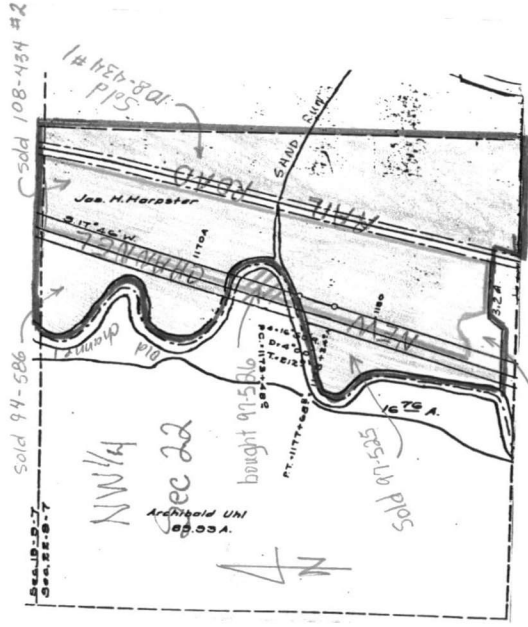


ACRES	QTR	LOT	SEC	TWP	RNG	Survey For Transfer			PLAT					
1.4 calc bal.						22	9	7	Hardy Twp.			PCL # 06-01234.000		
Orig Ref all	NW 1/4 E of Old Channel			OUTSALE		H-20 NW			GRANTEE		DEED	REFERENCE	DATE	
	(RR sold 30-241 3.2 sold 35-69) see back					Harpster, Isaac			60	118			4-17 1895	
						Harpster, James H. ?			61	223	60	118	1-15 1898	
8.	Uhl, Kenneth R. et al								94	586			2-14 1925	
west of & S of	new channel Sand Run		Fair, John D.						97	525			4-17 1929	
26.06 by Aud	(Part of 106.06 ac)								108	434	Tract	1	1939	
E of RR between RR	DeVore, George W. & Lulu M.					(Part of 33.64 ac)			108	434	Tract	2	1939	
& New Channel	DeVore, George W. & Lulu M.													
<i>unknown</i>														
When the heirs of James Harpster sold a piece of ground on the east side of						the land to DeVore they used new descriptions which left the new channel south of Sand Run.								
<i>also see p.15-501 p.19-599 @ R.66-22+43</i>														
<i>there is a new unrecorded survey for this parcel by Baker dated</i>						<i>3/5/2009</i>								
SEE NEXT CARD														



Parcel left for this Card

The plans showing the location of the new channel also shows the location of the old channel. On the plan, the old channel in this area is shown west of the new channel. acreage for this card was calculated using information from adjoining properties and forcing the closure along the new channel.

East	33 ft
N 70° E	66 ft
S 65° E	123.42 ft
S 7° E	99 ft

from 201/67

S 43° 30' W	187.44 ft
N 88° W	190. ft (scaled dist.)

from 135/36

N 21° 14' 29" E 275.93 forced closure calculated

contains 1.40 acres calculated