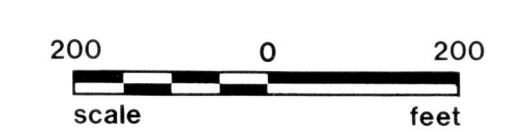




HOLMES COUNTY, OHIO  
PHOTOGRAPHIC ENLARGEMENT

PRODUCED FROM PHOTOGRAPHY EXPOSED 3-29-86



SHEET NO. C-2

1" = 200' QTR. \_\_\_ LOT \_\_\_ SEC. 16 TWP. 8 RANGE 5