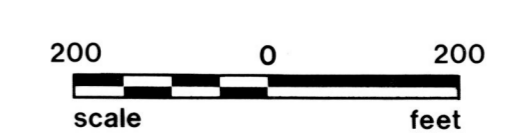




**HOLMES COUNTY, OHIO
PHOTOGRAPHIC ENLARGEMENT**

PRODUCED FROM PHOTOGRAPHY EXPOSED JAN & MAR 74



1" = 200'

PHOTO NO. 363

SEC. 18 TWP. 9 RANGE 7
QTR. 3 LOT. 9, 11

