



**HOLMES COUNTY, OHIO  
PHOTOGRAPHIC ENLARGEMENT**

PRODUCED FROM PHOTOGRAPHY EXPOSED JAN. & MAR. 74

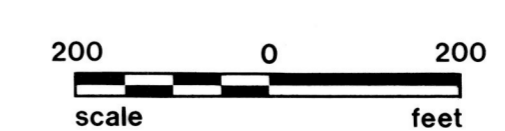


PHOTO NO. 703

1" = 200' QTR. 2 LOT. SEC. 4 TWP. 9 RANGE 5



13-25